

HZ9N_50

Digital Pressure switch/Vacuum switch IP65

- IP65 PROTECTION
Against water and dust from all directions
- 316L STAINLESS STEEL SENSOR AND FITTING
Suitable for aggressive fluids and gases
- 2-COLOUR DIGITAL LCD DISPLAY
Free configuration according to the applications
- QUICK CONNECTION
Connector with quick installation cable standard supplied
- COPY FUNCTION
The setting of master HZ9N_50 can be copied onto slave pressure switches



TECHNICAL CHARACTERISTICS

	HZ9NC50 Vacuum switch	HZ9NP50 Pressure switch
Ambient temperature	0 ÷ 50 °C	
Fluid	filtered air, inert gases non-corrosive non-flammable	
Working pressure	-1 ÷ 1 bar	0 ÷ 10 bar
Pressure range	-1 ÷ 1 bar	-1 ÷ 10 bar
Max. pressure	3 bar	15 bar
Set pressure resolution	kPa	0,1
	MPa	-
	kgf/cm ²	0,001
	bar	0,001
	psi	0,01
InHg	0,1	-
Connections	R 1/8 - M5F	

CODIFICATION KEY

H	Z	9	N	P	5	0	0	1	0			
1		2		3		4		5				

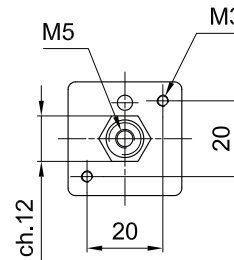
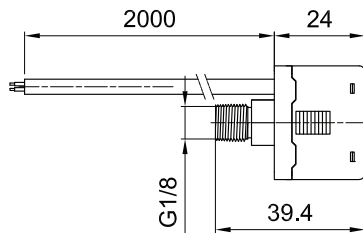
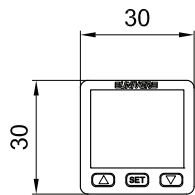
1 Series HZ9N = Digital Pressure switch/Vacuum switch	2 Pressure range C = Compound (-1 ÷ 1 bar) P = Positive (0 ÷ 10 bar)	3 Type 50 = IP65
4 Output signal 010 = 2 NPN outputs + 1 analog output (1-5V) 011 = 2 NPN outputs + 1 analog output (4-20mA) 02 = 2 NPN outputs + copy function 030 = 2 PNP outputs + 1 analog output (1-5V) 031 = 2 PNP outputs + 1 analog output (4-20mA) 04 = 2 PNP outputs + copy function	5 Options L05 = Cable 5 m Standard version 2 m cable	

ELECTRICAL CHARACTERISTICS

Power supply voltage		12 ÷ 24V DC ± 10%, ripple max ≤ 10%
Current consumption		≤ 40mA (with no load)
Switch output	PNP/NPN	open collector 2 outputs
	Max. load current	125 mA
	Max. supply voltage	24 V DC
	Residual voltage	≤ 1,5 V
Repeatability (switch output)		≤ ± 0,2% F.S. ± 1 digit
Hysteresis		adjustable ^(A) (one point set mode, hysteresis mode, window comparator mode)
Response time		≤ 2,5 ms (chattering-proof function: 25ms, 100 ms, 250 ms, 500 ms, 1000 ms, 1500 ms selectable)
Output short circuit protection		yes
Analog output (voltage output)	Voltage	1-5 V ≤ ± 2,5% F.S.
	Linearity	≤ ± 1% F.S.
	Output impedance	about 1k Ω
Analog output (current output)	Current	4 ÷ 20 mA ≤ ± 2,5% F.S.
	Linearity	≤ ± 1% F.S.
	Max. load impedance	250 Ω a 12 V DC, 600 Ω a 24 V DC
	Min. load impedance	50 Ω
7 segment LCD display		main display digit 3 ^{1/2} two colors (red/green)
Indicator accuracy		≤ ± 2% F.S. ± 1 digit (ambient temperature: 25 ± 3°C)
Switch ON indicator		orange output 1 and 2
Environment	Enclosure	IP65
	Storage temperature	-10 ÷ 60°C (no condensation or freezing)
	Humidity	35 ÷ 85% relative humidity (no condensation)
	Withstand voltage	1000 V AC in 1-min between case and lead wire
	Insulation resistance	min. 50 MΩ (a 500 V DC, between case and lead wire)
	Vibration	total amplitude 1,5 mm o 10G, 10Hz ÷ 150Hz, 10Hz for 1 minute, 2 hours direction X,Y, Z
	Shock	100m/s ² (10G), 3 times direction X,Y, and Z
Temperature characteristic		≤ ± 2,5% F.S. of detected pressure (25°C) at temperature range of 0-50°C
Lead wire		Oil-resistance cable (0,15 mm ²)
Weight		about 86g (with 2 m lead wire)

(A) = Hysteresis value is adjustable within 1 ÷ 8 digits for one point set mode and window comparator mode

5



HZ9N1F-50

HZ9N2F-51

HZ9N2F-52



Adapter for panel assembly + protection cap

Support

Support