

# HC

## Raccordi e accessori con funzioni pneumatiche

- Regolatori di flusso in tecnopolimero
- Regolatori di flusso corpo metallico
- Valvole di non ritorno
- Valvole a scarico rapido
- Valvola di blocco
- Miniregolatore di pressione
- Valvole manuali di linea
- Silenziatori



### CARATTERISTICHE TECNICHE

#### REGOLATORI DI FLUSSO IN TECNOPOLIMERO

Temperatura	-20 ÷ 80 °C
Fluido	aria compressa, vuoto
Pressione Max	15 bar
Pressione di lavoro	9 bar
Applicazioni	circuiti pneumatici
Tubi di collegamento consigliati	poliammide PA 10.12, poliuretano Sh.A98 co-poliuretano Sh.55D

#### REGOLATORI DI FLUSSO CORPO METALLICO - VALVOLE DI NON RITORNO VALVOLE A SCARICO RAPIDO - VALVOLA DI BLOCCO - MINIREGOLATORE DI PRESSIONE

Temperatura	0 ÷ 70 °C
Fluido	aria compressa
Pressione Max	10 bar
Pressione di lavoro	0,3 ÷ 10 bar

#### VALVOLE MANUALI DI LINEA

Temperatura	-10 ÷ 90 °C 0 ÷ 60 °C (tecnopolimero HC11-12)
Fluido	aria compressa, vuoto
Pressione Max	15 bar
Pressione di lavoro	-0,99 ÷ 10 bar

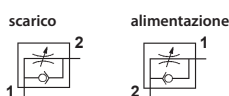
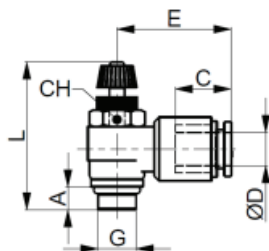
### CARATTERISTICHE COSTRUTTIVE

#### REGOLATORI DI FLUSSO IN TECNOPOLIMERO

Corpo	tecnopolimero
Elemento di fissaggio	ottone nichelato con O-ring in NBR nella versione cilindrica (standard) rivestimento in teflon nella versione conica (su richiesta)
Pinza di aggraffaggio	acciaio inox
Anello di sgancio	tecnopolimero

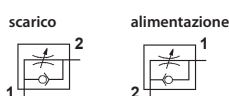
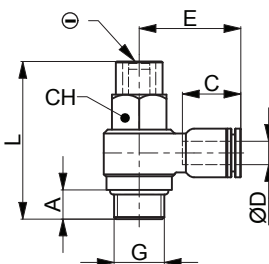
## REGOLATORI DI FLUSSO IN TECNOPOLIMERO

### HC01/HC02 Regolatore di flusso gomito girevole unidirezionale



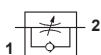
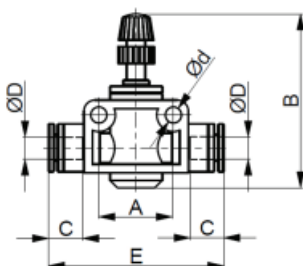
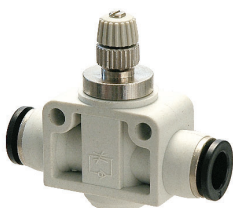
Codice		ØD	G	A	E	C	L		CH
scarico	alimentazione						Min	Max	
HC0104M5	HC0204M5	4	M5	3,5	20	14,9	29	31,9	8
HC0106M5	HC0206M5	6	M5	3,5	21,7	15,4	29	31,9	8
HC010418	HC020418	4	G1/8	7,5	22,3	14,9	37,5	44,3	10
HC010618	HC020618	6	G1/8	7,5	22,9	15,4	37,5	44,3	10
HC010818	HC020818	8	G1/8	7,5	25,3	17,3	37,5	44,3	10
HC010414	HC020414	4	G1/4	11,2	24	14,9	43,7	51,3	14
HC010614	HC020614	6	G1/4	11,2	24,9	15,4	43,7	51,3	14
HC010814	HC020814	8	G1/4	11,2	28,4	18,3	43,7	51,3	14
HC011014	HC021014	10	G1/4	11,2	32	20,5	43,7	51,3	14
HC010838	HC020838	8	G3/8	12,3	29,3	18,3	48,4	55,3	19
HC011038	HC021038	10	G3/8	12,3	32,5	20,5	48,4	55,3	19
HC011238	HC021238	12	G3/8	12,3	35,3	21,8	48,4	55,3	19
HC011012	HC021012	10	G1/2	15	35,5	20,5	52,7	59,5	24
HC011212	HC021212	12	G1/2	15	36,3	22,3	52,7	59,5	24

### HC01T/HC02T Regolatore di flusso gomito girevole taglio cacciavite unidirezionale



Codice		ØD	G	A	E	C	L	CH
scarico	alimentazione							
HC01T0418	HC02T0418	4	G1/8	7,5	22,3	14,9	37,5	10
HC01T0618	HC02T0618	6	G1/8	7,5	22,9	15,9	37,5	10
HC01T0818	HC02T0818	8	G1/8	7,5	25,3	17,3	37,5	10
HC01T1018	HC02T1018	10	G1/8	7,5	32	20,5	37,5	10
HC01T1218	HC02T1218	12	G1/8	7,5	35,3	21,8	37,5	10
HC01T0614	HC02T0614	6	G1/4	11,2	24,9	15,4	43,7	14
HC01T0814	HC02T0814	8	G1/4	11,2	28,4	18,3	43,7	14
HC01T1014	HC02T1014	10	G1/4	11,2	32	20,5	43,7	14
HC01T1214	HC02T1214	12	G1/4	11,2	35,3	21,8	43,7	14
HC01T0638	HC02T0638	6	G3/8	12,3	24,9	15,4	48,4	19
HC01T0838	HC02T0838	8	G3/8	12,3	29,3	18,3	48,4	19
HC01T1038	HC02T1038	10	G3/8	12,3	32,5	20,5	48,4	19
HC01T1238	HC02T1238	12	G3/8	12,3	35,3	21,8	48,4	19

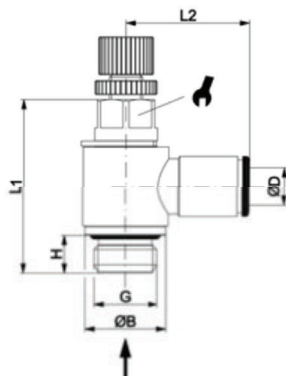
### HC04 Regolatore di flusso intermedio unidirezionale



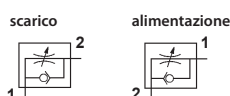
Codice	ØD	Ød	A	B		E	C
				Min	Max		
HC040404	4	3,2	14	28	31	39,5	14,4
HC040606	6	4,3	20	40,7	47,5	47,1	15,5
HC040808	8	4,3	22	44,1	51,8	52	16,8
HC041010	10	4,3	26	47,7	55,3	62,3	19,5
HC041212	12	4,3	32	52	58	73,6	22,3

## REGOLATORI DI FLUSSO CORPO METALLICO

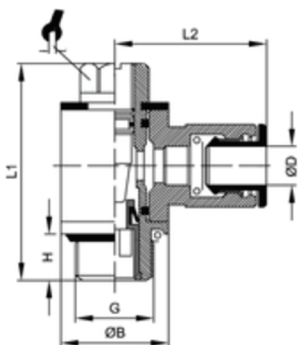
### HC21/HC22 Regolatore di flusso gomito girevole unidirezionale



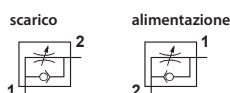
Codice		ØD	G	H	ØB	L1	L2	SW	NI/mm*
scarico	alimentazione								
HC2104M5	HC2204M5	4	M5	4	9	27	20	6	45
HC210418	HC220418	4	G1/8	6,5	13	32	21	9	310
HC210618	HC220618	6	G1/8	6,5	13	32	23	9	390
HC210818	HC220818	8	G1/8	6,5	13	32	24,5	9	390
HC210614	HC220614	6	G1/4	8	17	37	24	12	710
HC210814	HC220814	8	G1/4	8	17	37	26	12	810
HC211014	HC221014	10	G1/4	8	17	37	27	12	810



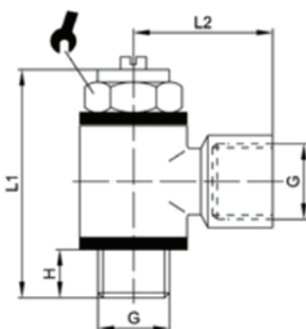
### HC18/HC19 Regolatore di flusso gomito girevole taglio cacciavite unidirezionale



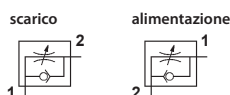
Codice		ØD	G	H	ØB	L1	L2	SW	NI/mm*
scarico	alimentazione								
HC1804M5	HC1904M5	4	M5	4	9	27	20	6	45
HC180418	HC190418	4	G1/8	6,5	13	32	21	9	310
HC180618	HC190618	6	G1/8	6,5	13	32	23	9	390
HC180818	HC190818	8	G1/8	6,5	13	32	24,5	9	390
HC180614	HC190614	6	G1/4	8	17	37	24	12	710
HC180814	HC190814	8	G1/4	8	17	37	26	12	810
HC181014	HC191014	10	G1/4	8	17	37	27	12	810



### HC27/HC28 Regolatore di flusso gomito maschio/femmina filettato unidirezionale

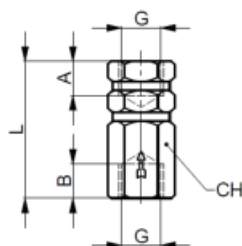


Codice		G	H	L1	L2	SW	NI/mm*
scarico	alimentazione						
HC27M5M5	HC28M5M5	M5	4	25	11,5	8	45
HC271818	HC281818	G1/8	5	32	21	14	310
HC271414	HC281414	G1/4	6	18	25,5	14	450
HC273838	HC283838	G3/8	6	46	26	20	1040
HC271212	HC281212	G1/2	10	52,5	32	26	2200



**VALVOLE DI NON RITORNO**

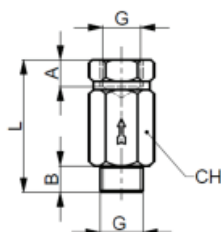
**HC13** Valvola di non ritorno F-F



Codice	G	A	B	L	CH
HC1300M5	M5	6	6	25	10
HC130018	G1/8	7	7	35	13
HC130014	G1/4	8	8	40	17
HC130038	G3/8	12	12	46	20
HC130012	G1/2	14	14	53	25

Su richiesta guarnizioni per alta temperatura

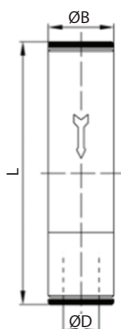
**HC14** Valvola di non ritorno F-M



Codice	G	A	B	L	CH
HC140018	G1/8	7	7	35	13
HC140014	G1/4	8	8	40	17

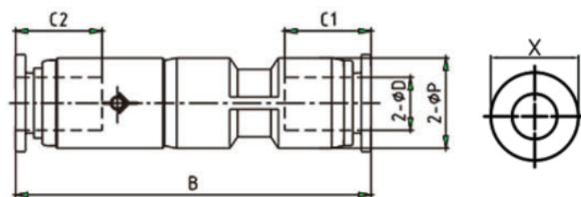
Su richiesta guarnizioni per alta temperatura

**HC15** Valvola di non ritorno con attacchi automatici per tubo



Codice	ØD	ØB	L
HC150004	4	9	47,5
HC150006	6	11	50
HC150008	8	13	53,5

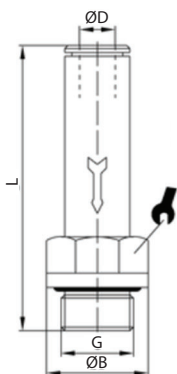
**HC16** Valvola di non ritorno con attacchi automatici per tubo



Codice	ØD	ØP	C1	C2	B	X
HC160404	4	11	15,4	14,9	50,8	10
HC160606	6	13	15,6	16	55,5	12
HC160808	8	14,8	18,3	18,2	58,5	14
HC161010	10	24,8	20,3	20,3	73,3	17
HC161212	12	24,8	22,7	22,7	78,7	20

5

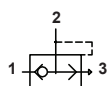
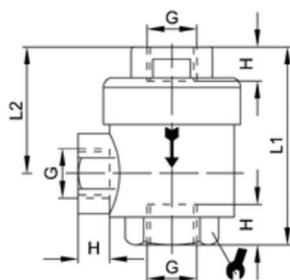
HC17 Valvola di non ritorno attacco filettato



Codice	ØD	G	ØB	L	SW
HC170418	4	G1/8	13	35	11
HC170618	6	G1/8	13	39,0	13
HC170818	8	G1/8	13	39,0	15
HC170614	6	G1/4	16	38	14
HC170814	8	G1/4	16	40	16
HC171038	10	G3/8	20	42,5	18
HC171238	12	G3/8	20	42,5	18
HC171012	10	G1/2	25	46	22
HC171212	12	G1/2	25	46	22

VALVOLE A SCARICO RAPIDO

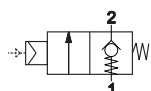
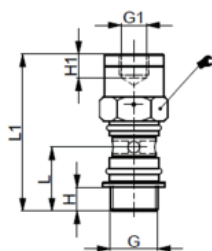
HC06 Valvola a scarico rapido



Codice	G	H	L1	L2	SW	portata a 6 bar (NI/min)	
						1→2	2→3
HC0600M5	M5	4,5	25	16,5	10	220	300
HC060018	G1/8	8	42	2,8	14	680	1100
HC060014	G1/4	11	53	34,5	19	1200	2100
HC060038	G3/8	12	55	35,0	21	2300	4800
HC060012	G1/2	14	71	44	26	3400	6100
HC060034	G3/4	18	86	52	32	3200	8750
HC060001	G1	19	94	56	38	2900	10.750

VALVOLA DI BLOCCO

HC34 Valvola di blocco

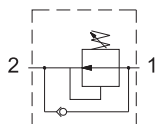
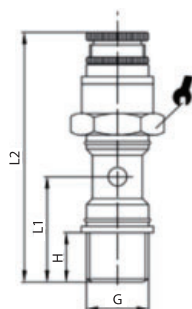


HB40 anello singolo

Codice	G	G1	H	H1	L	L1	CH	portata a 6 bar (NI/min)
HC3418M5	G1/8	M5	6	6	15,5	42	15	400
HC3414M5	G1/4	M5	8	6	18,5	42	17	850
HC343818	G3/8	G1/8	8	8	22	53,5	20	1250

## MINIREGOLATORE DI PRESSIONE

### HC35 Miniregolatore di pressione

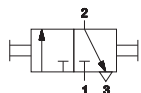
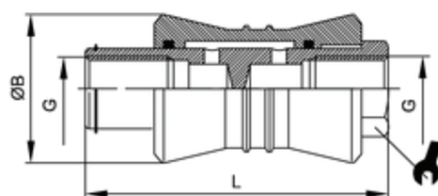


HB40 anello singolo

Codice	G	H	L1	L2	CH	portata a 6 bar (NI/min)
HC350018	G1/8	6	15,5	56	15	340
HC350014	G1/4	8	18,5	63	17	580

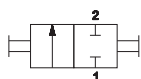
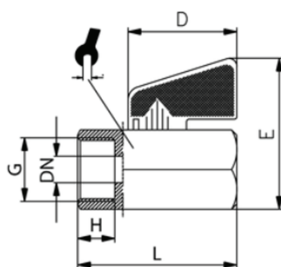
## VALVOLE MANUALI DI LINEA

### HC05 Valvola a corsoio



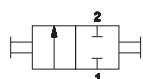
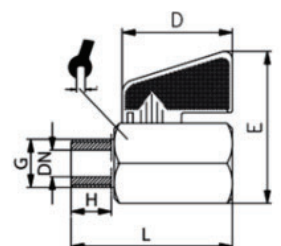
Codice	G	ØB	L	CH	portata a 6 bar (NI/min)	
					1→2	2→3
HC0500M5	M5	15	33	10	350	690
HC050018	G1/8	25	48	14	700	1280
HC050014	G1/4	30	58	19	1500	2220
HC050038	G3/8	35	68	22	2200	3200
HC050012	G1/2	40	80	27	3400	7500
HC050034	G3/4	49	83	32	4500	8400

### HC07 Rubinetto a sfera F-F



Codice	G	H	L	D	E	DN	CH
HC070018	G1/8	10	40	30	38	7	21
HC070014	G1/4	10	40	30	38	8	21
HC070038	G3/8	10	40	30	38	8	21
HC070012	G1/2	10,5	46	30	42	10	25
HC070034	G3/4	12	54	30	47	12	30

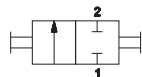
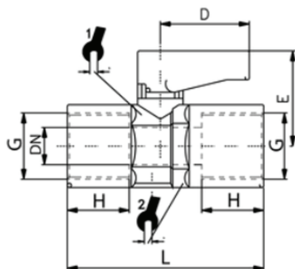
### HC08 Rubinetto a sfera M-F



Codice	G	H	L	D	E	DN	CH
HC080018	G1/8	9	39	30	37	6	20
HC080014	G1/4	9	39	30	37	8	20
HC080038	G3/4	10	40	30	37	10	20
HC080012	G1/2	12	45	30	41,5	15	25
HC080034	G3/4	14	51	30	47	20	30

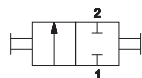
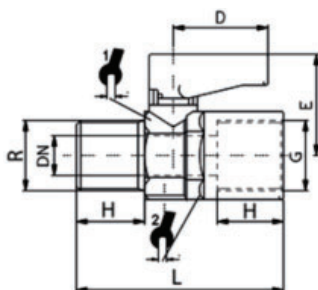
5

HC09 Mini rubinetto a sfera F-F con maniglia nera



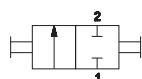
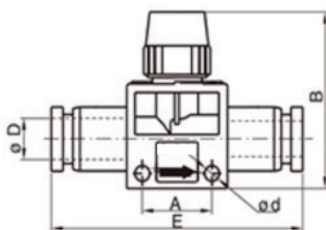
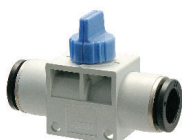
Codice	G	H	L	D	E	DN	CH1	CH2
HC090018	G1/8	8	36,5	19,5	21,5	5,5	14	14
HC090014	G1/4	11	43	19,5	21,5	5,5	14	14

HC10 Mini rubinetto a sfera M-F con maniglia nera



Codice	R	G	H	L	D	E	DH	CH1	CH2
HC100018	G1/8	1/8	8	35,5	19,5	21,5	5,5	14	14
HC100014	G1/4	1/4	11	40,5	19,5	21,5	5,5	14	14
HC150038	G3/8	3/8	11,5	44,5	19,5	23	8	18	18

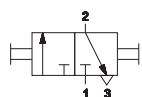
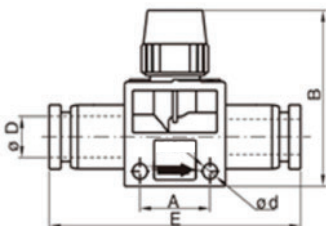
HC11 Mini-valvola manuale 2/2



Codice	ØD	Ød	A	B	E	C1	C2
HC110606	6	4,2	16,5	42,6	51,1	17,9	17,9
HC110808	8	4,2	16,5	42,6	52	18,8	18,8
HC111010	10	4,2	21,5	47	63,3	21	21
HC111212	12	4,2	21,5	47	64,1	22,6	22,6

5

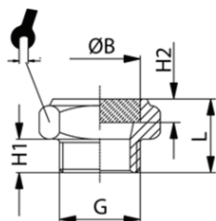
HC12 Mini-valvola manuale 3/2



Codice	ØD	Ød	A	B	E	C1	C2
HC120606	6	4,2	16,5	42,6	51,1	17,9	17,9
HC120808	8	4,2	16,5	42,6	52	18,8	18,8
HC121010	10	4,2	21,5	47	63,3	21	21
HC121212	12	4,2	21,5	47	64,1	22,6	22,6

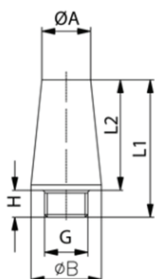
**SILENZIATORI**

**HC51 Silenziatore piatto bronzo sinterizzato**



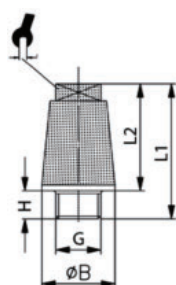
Codice	G	ØB	H1	H2	L	CH
HC5100M5	M5	5	4	2,5	8	8
HC510018	G1/8	9	6	4	12	13
HC510014	G1/4	11	8	4	16	16
HC510038	G3/8	17	9	4	18	19
HC510012	G1/2	20,5	11	4	19	24
HC510034	G3/4	28	13	4	24	30
HC510001	G1	34	15	4	27	36
HC510112	G1 <sup>1/2</sup>	-	-	-	-	-

**HC52 Silenziatore a tronco di cono bronzo sinterizzato**



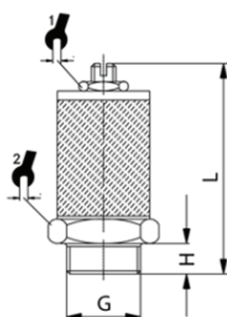
Codice	G	ØB	H	L1	L2	ØA
HC5200M5	M5	6	4,5	13	8,5	5
HC520018	G1/8	12	6	21	15	8
HC520014	G1/4	15	6	25	19	11
HC520038	G3/8	19	8	36	28	15
HC520012	G1/2	23	10	43	33	18
HC520034	G3/4	30	13	53	40	23
HC520001	G1	38	15	63	48	28

**HC53 Silenziatore a tronco di cono bronzo sinterizzato testa quadrata**



Codice	G	ØB	H	L1	L2	CH
HC5300M5	M5	12	4	19,5	15,5	7
HC530018	G1/8	12	6	21	15	7
HC530014	G1/4	15	6	25	19	8
HC530038	G3/8	19	8	36	28	10
HC530012	G1/2	23	10	43	33	14
HC530034	G3/4	31	10	51	41	20
HC530001	G1	38	15	63	48	20

**HC54 Regolatore di scarico silenziato fine**

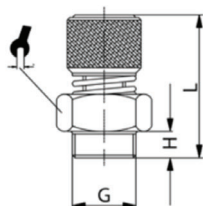


Codice	G	H	L MIN	L MAX	CH1	CH2
HC5400M5	M5	3,5	16	21	6	8
HC540018	G1/8	8	38	44	9	16
HC540014	G1/4	9	39	45	10	16
HC540038	G3/8	10	47	60	10	22
HC540012	G1/2	11	48	61	10	22
HC540034	G3/4	12,5	68	83	13	30
HC540001	G1	11	68	92	13	36

5

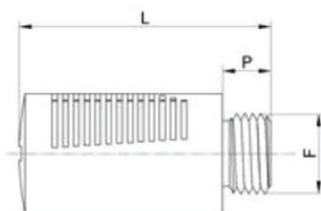


### HC55 Regolatore di scarico silenziato



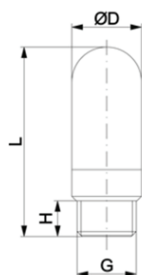
Codice	G	H	L MIN	L MAX	CH
HC5500M5	-	-	-	-	-
HC550018	G1/8	6	26	28	13
HC550014	G1/4	8	30	32	15
HC550038	G3/8	10	35	38	22
HC550012	G1/2	11	36	39	22
HC550034	G3/4	12	45	50	30
HC550001	G1	12	45	50	36

### HC56 Silenziatore dinamico in tecnopolimero



Codice	F	Ø	P	L
HC560018	G1/8	15	6	32,5
HC560014	G1/4	19,5	8	43
HC560038	G3/8	24,5	11	58
HC560012	G1/2	24,5	11	58
HC560034	G3/4	48	18	115
HC560001	G1	48	18	115

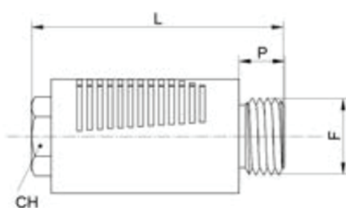
### HC57 Silenziatore plastica polietilene



Codice	G	L	H	ØD	NI/min*
HC5700M5	M5	21,5	4	6,5	15
HC570018	G1/8	34	5,5	12,5	50
HC570014	G1/4	42,5	8	15,5	70
HC570038	G3/8	67,5	11,5	18,5	60
HC570012	G1/2	77,5	11	23,3	70
HC570034	G3/4	131,5	16	38,5	90
HC570001	G1	161	21	49	90

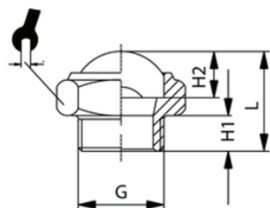
5

### HC58 Silenziatore in tecnopolimero



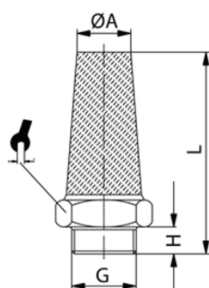
Codice	F	P	L	CH
HC580018	G1/8	6,0	34	10
HC580014	G1/4	8,0	44	12
HC580038	G3/8	10,0	56	17
HC580012	G1/2	10,0	56	17
HC580034	G3/4	18,0	115	-
HC580001	G1	18,0	115	-

**HC59 Silenziatore a cupola con filo in acciaio**



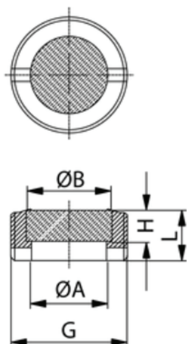
Codice	G	H1	H2	L	CH
HC5900M5	M5	3,5	3	8	8
HC590018	G1/8	6	4	16	13
HC590014	G1/4	8	4	19	16
HC590038	G3/8	9	4	21	19
HC590012	G1/2	10	4	22	24
HC590034	G3/4	10	4	27	30
HC590001	G1	15	4	29	36

**HC60 Silenziatore a tronco di cono con esagono nipplo**



Codice	G	ØA	H	L	CH
HC6000M5	M5	3,5	4	17	8
HC600018	G1/8	7,5	6	26	13
HC600014	G1/4	8,5	8	34	16
HC600038	G3/8	12	8	41	19
HC600012	G1/2	16	9	45	24
HC600034	G3/4	20	10	50,5	30
HC600001	G1	26,5	10	66	36
HC600112	G1 <sup>1/2</sup>	36	20	98	55

**HC61 Silenziatore a scomparsa**



Codice	G	ØB	ØA	L	H
HC6100M5	M5	2,6	2,9	4	2
HC610018	G1/8	6	5	4	3
HC610014	G1/4	8	8	6,5	3
HC610038	G3/8	10	9,5	7	4
HC610012	G1/2	15	12	8	4
HC610034	G3/8	20	19	8	4
HC610001	G1	26	23	10	4