

ULY 40

Irreversible pneumatic retractable locating pin unit, single rod, Ø40 mm with hand lever

Irreversible pneumatic retractable locating pin unit, single rod, typically used in welding applications to locate metal sheets in a definite position.

- Toggle-joint system to hold the position even in case of air loss
- Metal rod scraper
- Antirotation system
- Electronic sensor
- Many rod end styles available
- Ergonomic hand lever



CHARACTERISTICS

Operating temperature	5° ÷ 45° C
Min./Max. operating pressure	0,4 / 0,6 MPa
Bore Ø	40 mm
Min. Pull force (0,5 MPa)	200 N
Max Push force (0,5 MPa)**	3100 N
Max. Torque (6 Nm)	± 0,06 mm
Max. Deflection (7,5 Nm)	± 0,03 mm
Manual Max. Torque	40 Nm
Weight	5,7 Kg
Pneumatic supply ports	G 1/8
Sensor	electronic (optical)
Supply voltage	10 ÷ 30 Vdc
IP code	IP 65

**Max. push force at end stroke position

CODIFICATION KEY

UL | Y | 40 | 040 | A | E | K | 0 | | |

1 2 3 4 5 6 7 8 9



IRREVERSIBLE



OPTICAL SENSOR



METAL SCRAPER



ANTI ROTATION

1

SERIES
UL = UNICLAMP locating pin unit

2

VERSION
Y = Pneumatic, with toggle-joint mechanism, single rod and hand lever

3

SIZE
40 = Ø40 mm

4

STROKE
040 = 40 mm

5

ROD END STYLE
A = Rod for offset pins
B = Rod with profiled end
C = Rod with cross-profiled end inner Ø16 mm
D = Rod for offset pins with oversized dowel holes

6

ROD ORIENTATION
X = Symmetrical

E* = East

O* = West

N* = North

S* = South

*only with "A" and "D" rod style

7

SENSOR
N = No sensor (with protection plate)
K = Electronic sensor PNP, M12 (DF-K)
J = Electronic sensor NPN, optical (DF-J)
Y = Electronic sensor PNP, M12 (DF-Y) white LED

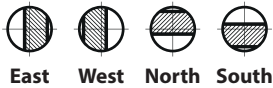
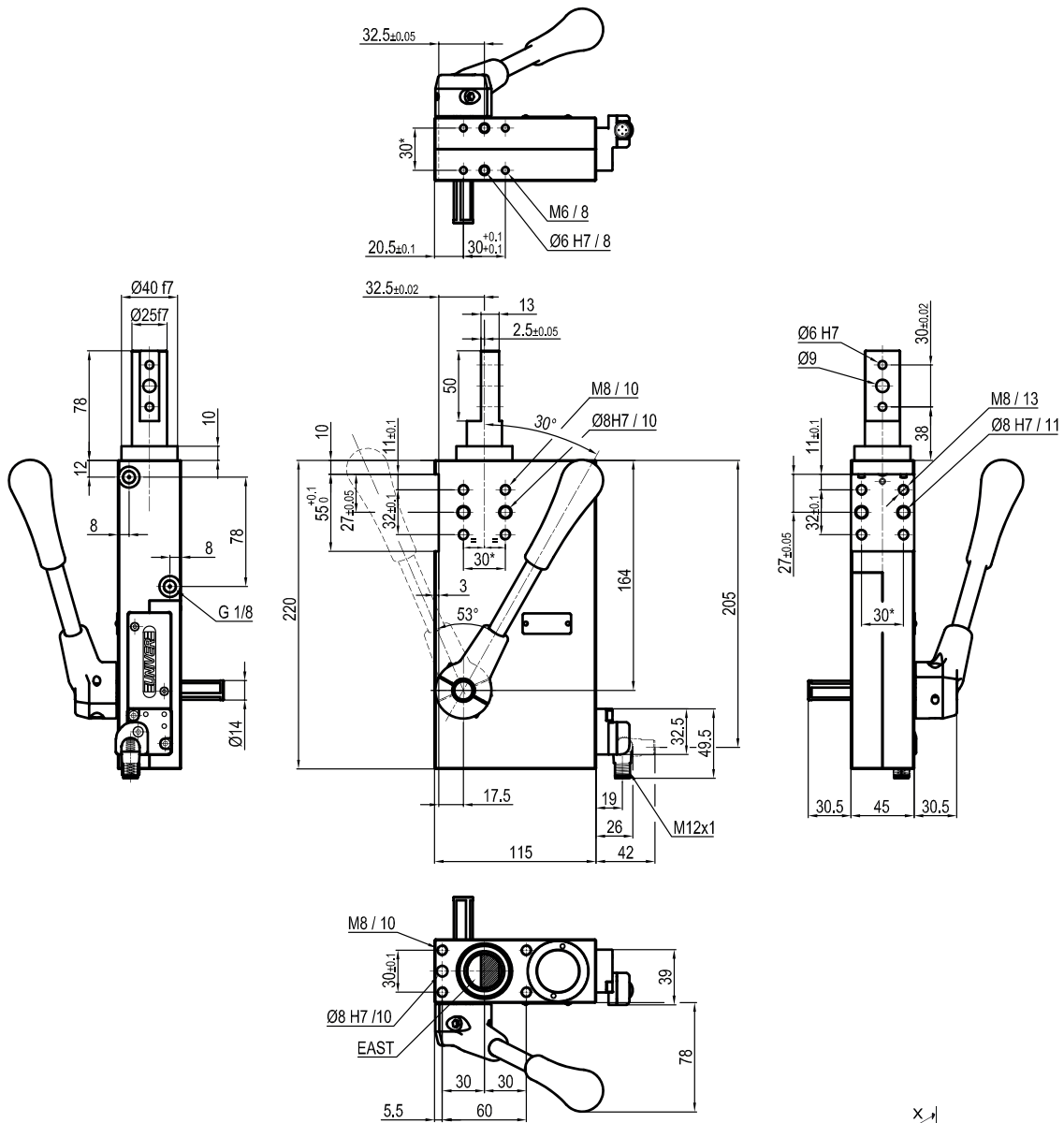
8

PRODUCT REVISION
Assigned by UNIVER

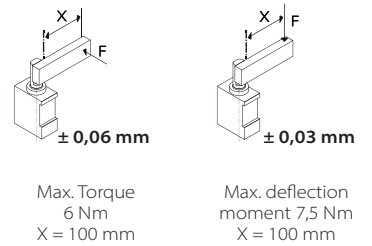
9

ATEX
X = ATEX option
See ATEX Catalogue for types and versions

A Rod for offset pins



*TOLERANCE BETWEEN DOWELS ± 0,02 BETWEEN SCREW HOLES ± 0,1



Sensors



Electronic (optical)

- DF-K PNP M12
- DF-J NPN M12
- DF-Y PNP M12 White LED

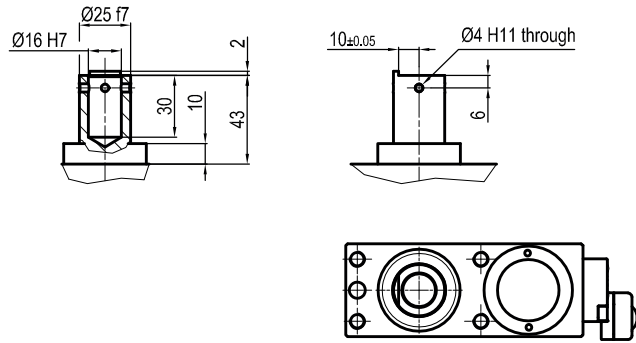
Accessories



Handlever

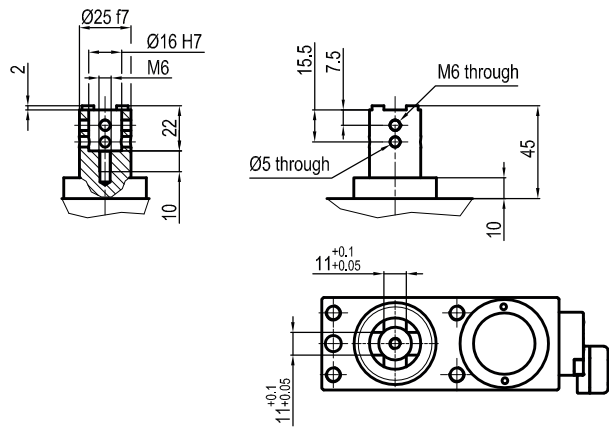
UBF2540

B Rod with profiled end



3

C Rod with cross-profiled end
Inner Ø16 mm



D Rod for offset pins
Oversized dowel holes

