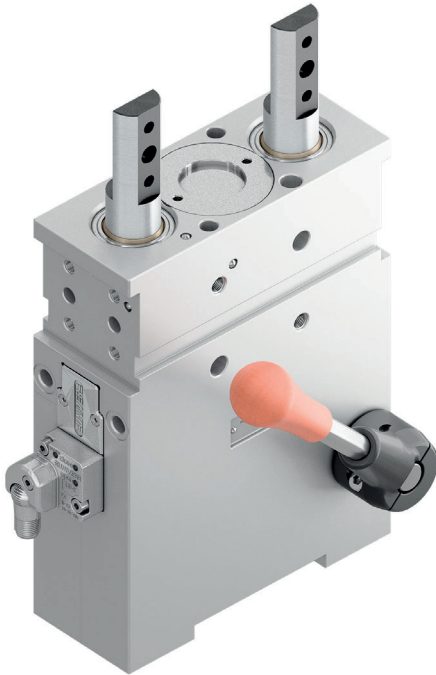


ULX 50

Irreversible pneumatic retractable locating pin unit, double rod, Ø50mm with hand lever

Irreversible pneumatic retractable locating pin unit, double rod, typically used in welding applications to locate metal sheets in a definite position.

- Metal rod scraper
- Optical sensor
- Rod orientation adjustable by the user



CHARACTERISTICS

Operating temperature	5° ÷ 45° C
Min./Max. operating pressure	0,4 / 0,6 MPa
Bore Ø	50 mm
Min. Pull force (0,5 MPa)	500 N
Max Push force (0,5 MPa)**	7150 N
Max. Torque (20 Nm)	± 0,1 mm
Max. Deflection (20 Nm)	± 0,07 mm
Max. side load	400 N
Max. deflection (40 mm stroke at max. load)	0,1 mm
Max. offset (from middle point)	200 mm
Weight	7,3 Kg
Pneumatic supply ports	G1/8
Sensor	electronic (optical)
Supply voltage	10 ÷ 30 Vdc
IP code	IP 65

**Max. push force at end stroke position

CODIFICATION KEY

UL | X | 50 | 040 | G | K | 0 | |
 1 2 3 4 5 6 7 8



IRREVERSIBLE



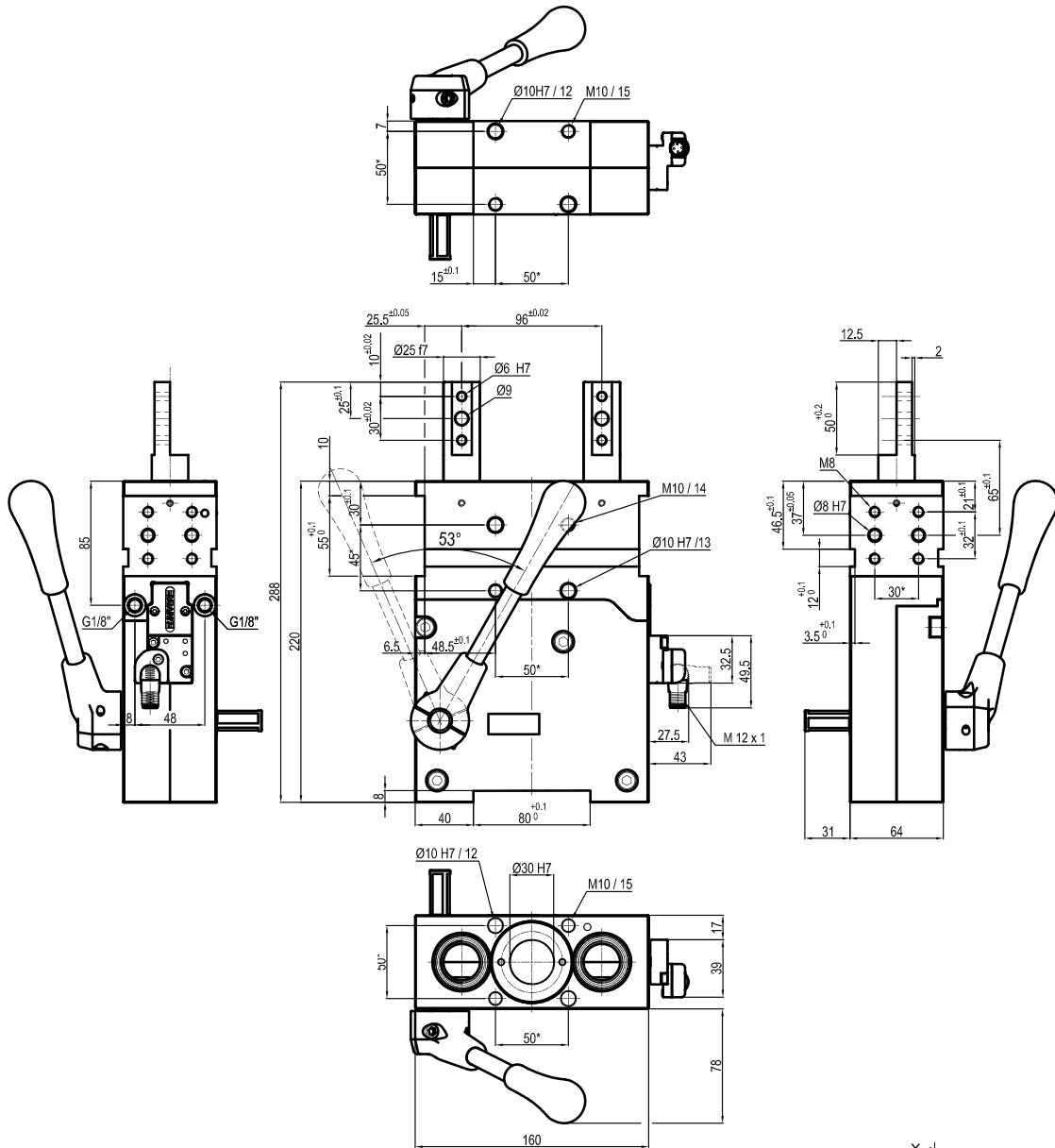
OPTICAL SENSOR



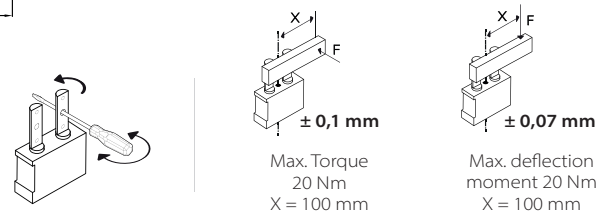
METAL SCRAPER

<p>1 SERIES UL = UNICLAMP locating pin unit</p> <p>2 VERSION X = Pneumatic, with toggle-joint mechanism double orientable rod and hand lever</p> <p>3 SIZE 50 = Ø50 mm</p> <p>4 STROKE 040 = 40 mm</p> <p>5 ROD END STYLE A = Rod for offset pins G = Rod for offset pins (rod plane matching body middle axis)</p>	<p>6 SENSOR N = No sensor (with protection plate) K = Electronic sensor PNP, M12 (DF-K) J = Electronic sensor NPN, optical (DF-J) Y = Electronic sensor PNP, M12 (DF-Y) white LED</p> <p>7 PRODUCT REVISION Assigned by UNIVER</p> <p>8 ATEX X = ATEX option See ATEX Catalogue for types and versions</p>
--	---

G Rod for offset pins
Rod plane matching body middle axis



*TOLERANCE BETWEEN DOWELS ± 0,02 BETWEEN SCREW HOLES ± 0,1



Sensors



Electronic (optical)

- DF-K PNP M12
- DF-J NPN M12
- DF-Y PNP M12 White LED

Accessories



Handlever

UBF255063