

ULT 50

Irreversible pneumatic retractable locating pin unit, double rod, Ø50 mm

Irreversible pneumatic retractable locating pin unit, double rod, typically used in welding applications to locate metal sheets in a definite position.

- Metal rod scraper
- Optical sensor
- Rod orientation adjustable by the user
- Version with hand lever available (ULX)



3

CHARACTERISTICS

Operating temperature	5° ÷ 45° C
Min./Max. operating pressure	0,4 / 0,6 MPa
Bore Ø	50 mm
Min Pull force (0,5 MPa)	500 N
Max Push force (0,5 MPa)**	7150 N
Max. Torque (20 Nm)	± 0,1 mm
Max. Deflection (20 Nm)	± 0,07 mm
Max. side load	400 N
Max. deflection (40 mm stroke at max. load)	0,1 mm
Max. offset (from middle point)	200 mm
Weight	7,3 Kg
Pneumatic supply ports	G1/8
Sensor	electronic (optical)
Supply voltage	10 ÷ 30 Vdc
IP code	IP 65

**Max. push force at end stroke position

CODIFICATION KEY

UL | T | 50 | 040 | G | K | 0 | |

1 2 3 4 5 6 7 8



IRREVERSIBLE



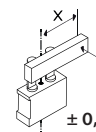
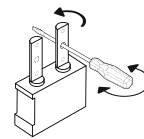
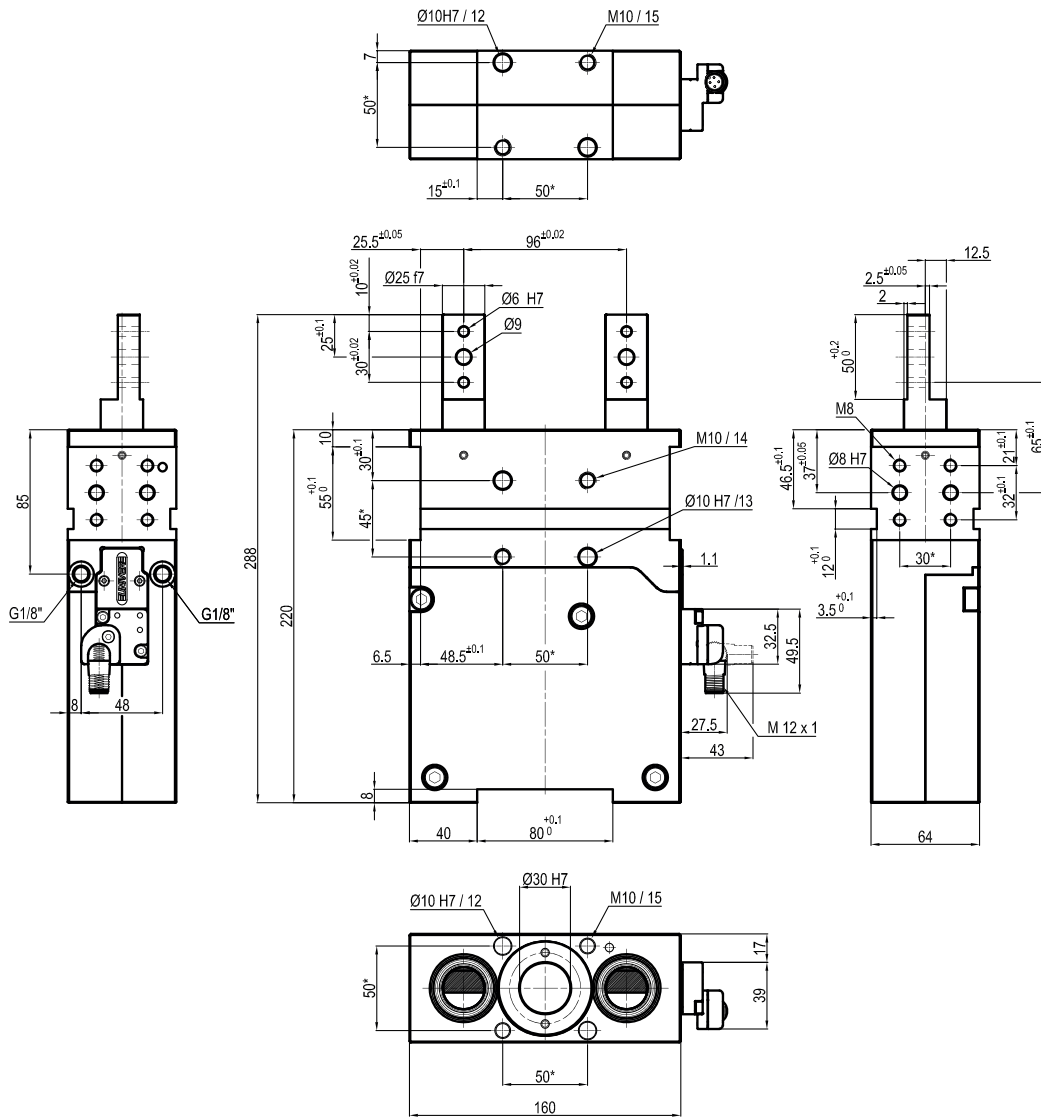
OPTICAL SENSOR



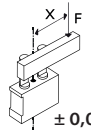
METAL SCRAPER

1	SERIES UL = UNICLAMP locating pin unit	6	SENSOR N = No sensor (with protection plate) K = Electronic sensor PNP, M12 (DF-K) J = Electronic sensor NPN, optical (DF-J) Y = Electronic sensor PNP, M12 (DF-Y) white LED
2	VERSION T = Pneumatic, with toggle-joint mechanism double orientable rod	7	PRODUCT REVISION Assigned by UNIVER
3	SIZE 50 = Ø50 mm	8	ATEX X = ATEX option See ATEX Catalogue for types and versions
4	STROKE 040 = 40 mm		
5	ROD END STYLE A = Rod for offset pins G = Rod for offset pins (rod plane matching body middle axis)		

A Rod for offset pins



± 0,1 mm
Max. Torque
20 Nm
X = 100 mm



± 0,07 mm
Max. deflection
moment 20 Nm
X = 100 mm

*TOLERANCE BETWEEN DOWELS ± 0,02 BETWEEN SCREW HOLES ± 0,1

Sensors

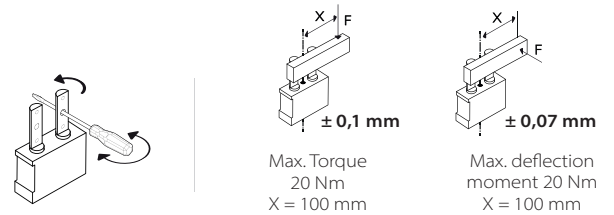
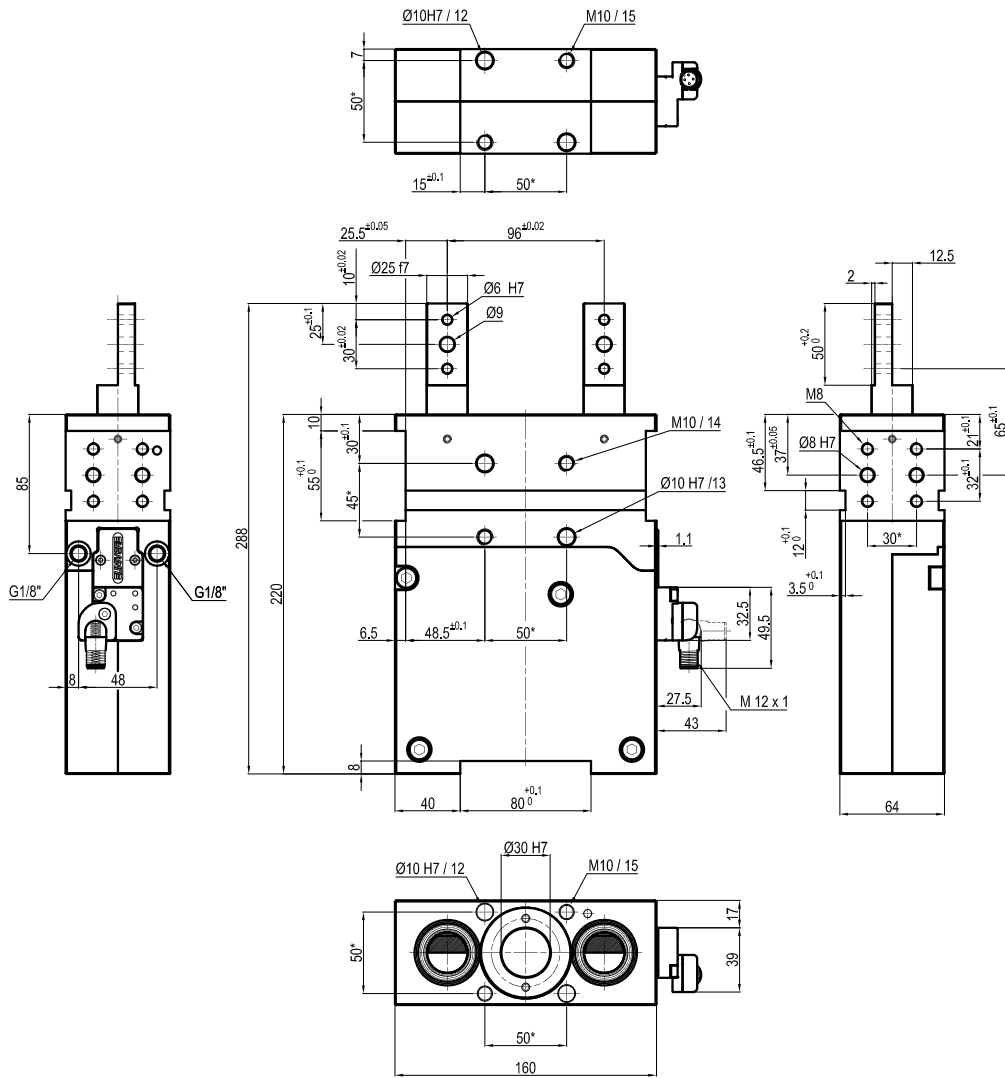


Electronic (optical)

- DF-K PNP M12
- DF-J NPN M12
- DF-Y PNP M12 White LED

G Rod for offset pins
Rod plane matching body middle axis

3



*TOLERANCE BETWEEN DOWELS ± 0,02 BETWEEN SCREW HOLES ± 0,1

Sensors



Electronic (optical)

- DF-K PNP M12
- DF-J NPN M12
- DF-Y PNP M12 White LED