

# ULP 32

Pneumatic retractable locating pin unit, single rod, Ø32 mm

Pneumatic retractable pin unit, single rod, typically used in welding applications to locate metal sheets in a definite position.



- Metal rod scraper
- Antirotation system
- Optical sensor
- Many rod end styles available

3

## CHARACTERISTICS

Operating temperature	5° ÷ 45° C
Min./Max. operating pressure	0,4 / 0,6 MPa
Bore Ø	32 mm
Max Pull force (0,5 MPa)	296 N
Max Push force (0,5 MPa)	390 N
Max. Torque (6 Nm)	± 0,06 mm
Max. Deflection (5,5 Nm)	± 0,03 mm
Weight	1,7 Kg
Pneumatic supply ports	G 1/8
Sensor	electronic (optical)
Supply voltage	10 ÷ 30 Vdc
IP code	IP 65

## CODIFICATION KEY

UL | P | 32 | 040 | C | X | K | 0 | | |

1 2 3 4 5 6 7 8 9



LIGHTWEIGHT



METAL SCRAPER



OPTICAL SENSOR



DOUBLE GUIDE



ANTI ROTATION

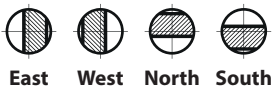
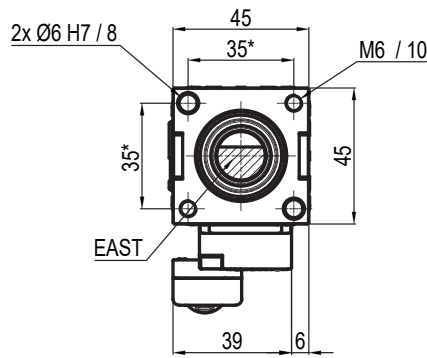
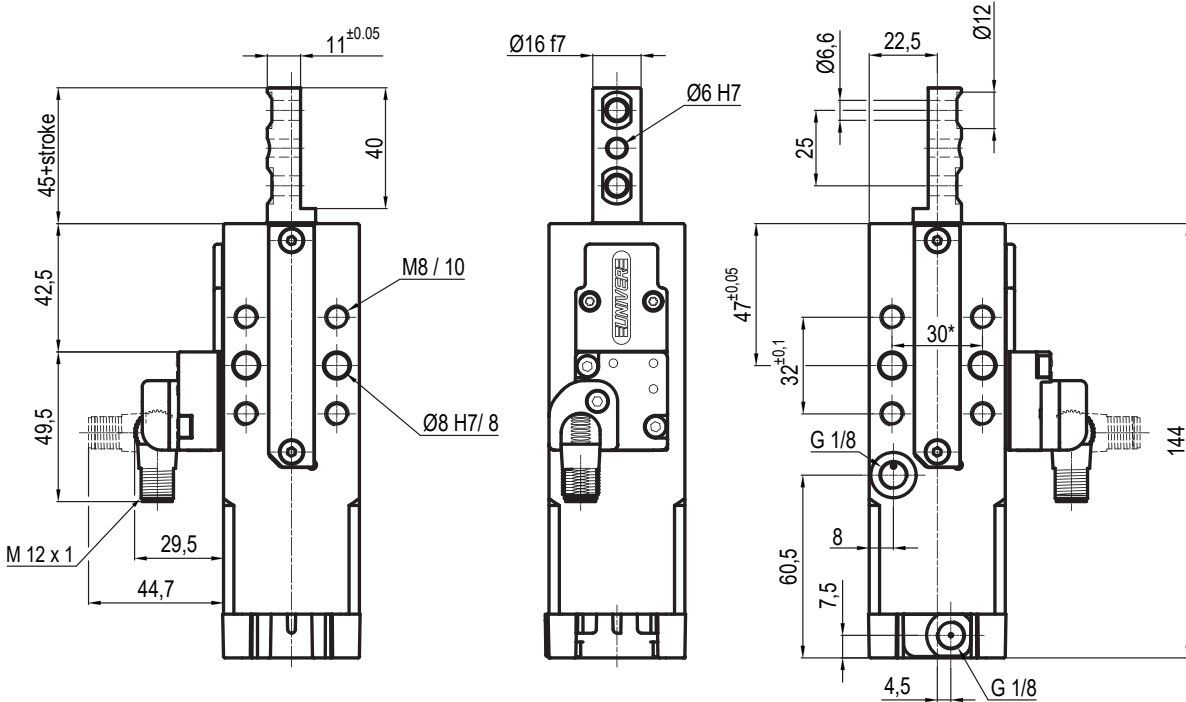


COMPACT

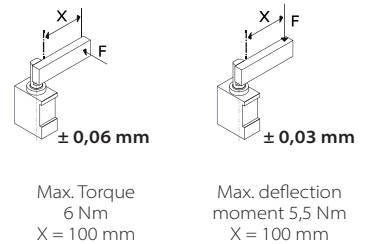
- 1 SERIES  
UL = UNICLAMP locating pin unit
- 2 VERSION  
P = Pneumatic, single rod
- 3 SIZE  
32 = Ø32 mm
- 4 STROKE  
020 = 20 mm  
040 = 40 mm
- 5 ROD END STYLE  
A = Rod for offset pins  
B = Rod with profiled end  
C = Rod with cross-profiled end inner Ø16 mm  
E = Rod with cross-profiled end inner Ø10 mm

- 6 ROD ORIENTATION  
X = Symmetrical  
  
E\* = East   
O\* = West   
N\* = North   
S\* = South   
\*only with "A" rod style
- 7 SENSOR  
N = No sensor (with protection plate)  
K = Electronic sensor PNP, M12 (DF-K)  
J = Electronic sensor NPN, optical, (DF-J)  
Y = Electronic sensor PNP, M12 (DF-Y) white LED
- 8 PRODUCT REVISION  
Assigned by UNIVER
- 9 ATEX  
X = ATEX option  
See ATEX Catalogue for types and versions

**A** Rod for offset pins



\*TOLERANCE BETWEEN DOWELS ± 0,02 BETWEEN SCREW HOLES ± 0,1



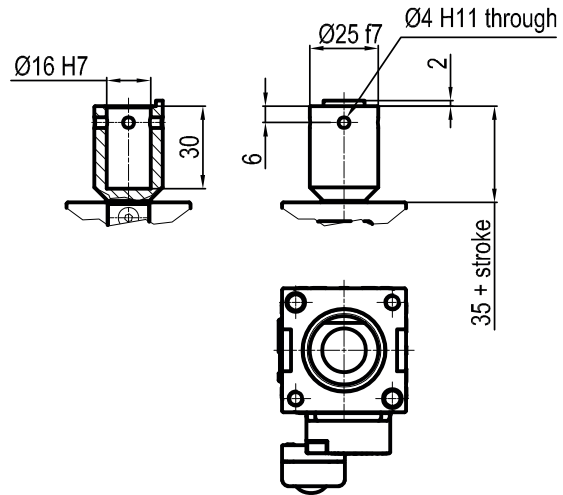
**Sensors**



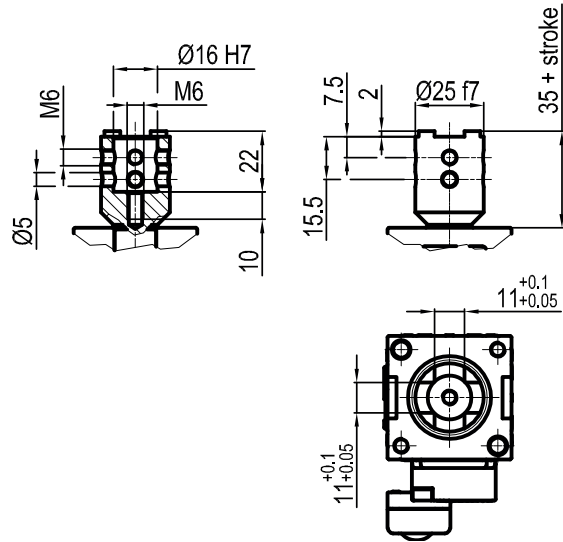
Electronic (optical)

- DF-K PNP M12
- DF-J NPN M12
- DF-Y PNP M12 White LED

**B** Rod with profiled end



**C** Rod with cross-profiled end  
Inner Ø16 mm



**E** Rod with cross-profiled end  
Inner Ø10 mm

