

ULL 50

Manual retractable locating pin unit, Ø50 mm with hand lever

Manual retractable locating pin unit, single rod, with hand lever typically used in welding applications to locate metal sheets in a definite position.

- Metal rod scraper
- Antirotation system
- Electronic sensor
- Many rod end styles available
- Ergonomic hand lever



3

CHARACTERISTICS

Operating temperature	5° ÷ 45° C
Min./Max. operating pressure	0,4 / 0,6 MPa
Bore Ø	50 mm
Max. Torque (6 Nm)	± 0,06 mm
Max. Deflection (7,5 Nm)	± 0,03 mm
Weight	2,5 Kg
Sensor	electronic (optical)
Supply voltage	10 ÷ 30 Vdc
IP code	IP 65

CODIFICATION KEY

UL | L | 50 | 040 | C | X | K | 0 |

1 2 3 4 5 6 7 8 9

OPTICAL SENSOR

METAL SCRAPER

ANTI ROTATION

1 SERIES
UL = UNICLAMP locating pin unit

2 VERSION
L = Manual with hand lever

3 SIZE
50 = Ø50 mm

4 STROKE
040 = 40 mm

5 ROD END STYLE
 A = Rod for offset pins
 B = Rod with profiled end
 C = Rod with cross-profiled end inner Ø 16 mm
 D = Rod for offset pins with oversized dowel holes
 E = Rod with cross profiled end inner Ø 10 mm
 F = Compatible with NAAMS, inner Ø 16
 H = Rod with flat end, inner Ø10 mm
 I = Rod with flat end, inner Ø12 mm
 L* = Rod with inner Ø12 mm
 M* = Rod with inner Ø 20 mm
 *compatible with CNOMO standard

6 ROD ORIENTATION
X = Symmetrical

E* = East

O* = West

N* = North

S* = South

*only with "A" and "D" rod style

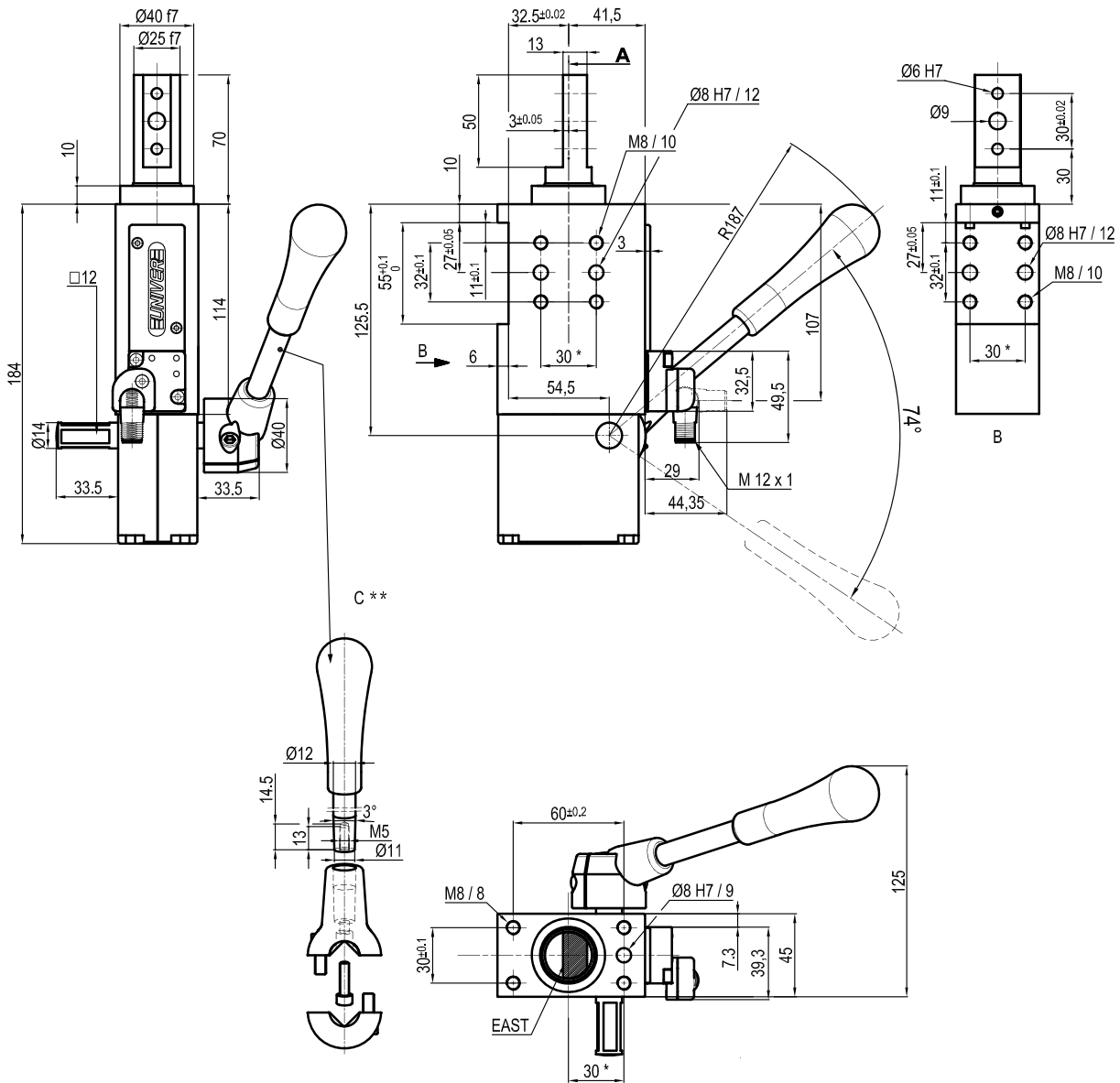
7 SENSOR
 N = No sensor (with protection plate)
 K = Electronic sensor PNP, M12 (DF-K)
 D = Pneumatic sensor (DF-UPNW)
 J = Electronic sensor NPN, optical (DF-J)
 Y = Electronic sensor PNP, M12 (DF-Y) white LED

8 PRODUCT REVISION
Assigned by UNIVER

9 ATEX
 X = ATEX option
 See ATEX Catalogue for types and versions

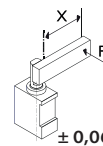
A Rod for offset pins

3



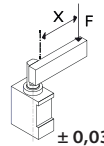
East West North South

*TOLERANCE BETWEEN DOWELS ± 0,02 BETWEEN SCREW HOLES ± 0,1
 **DIMENSIONS TO BE RESPECTED IN CASE OTHER MANUAL LEVERS ARE USED



± 0,06 mm

Max. Torque
6 Nm
X = 100 mm



± 0,03 mm

Max. deflection
moment 7,5 Nm
X = 100 mm

Sensors



Electronic (optical)

- DF-K PNP M12
- DF-J NPN M12
- DF-Y PNP M12 White LED



Pneumatic

DF-UPNW

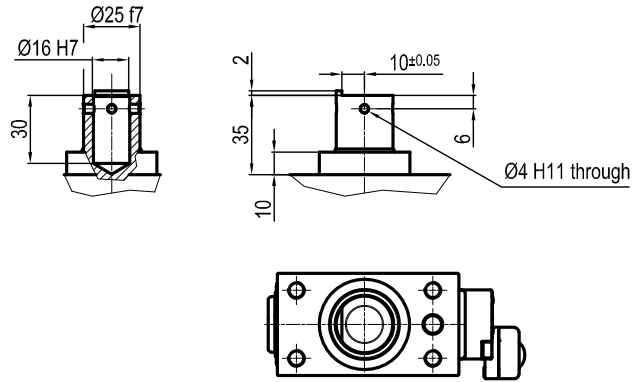
Accessories



Handlever

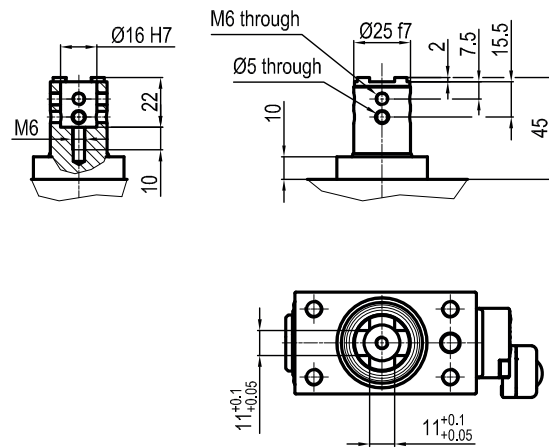
UBF255063

B Rod with profiled end

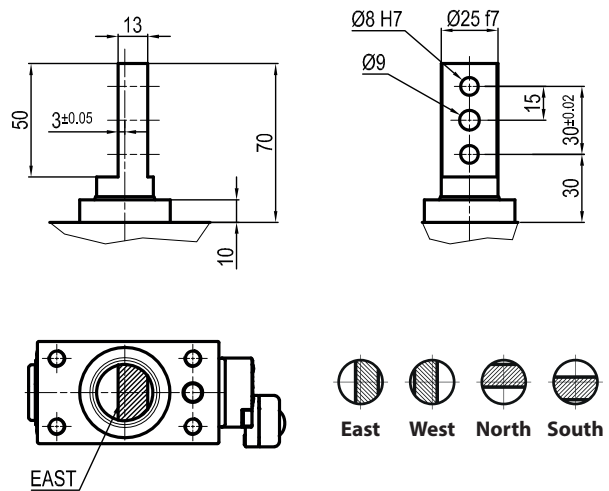


3

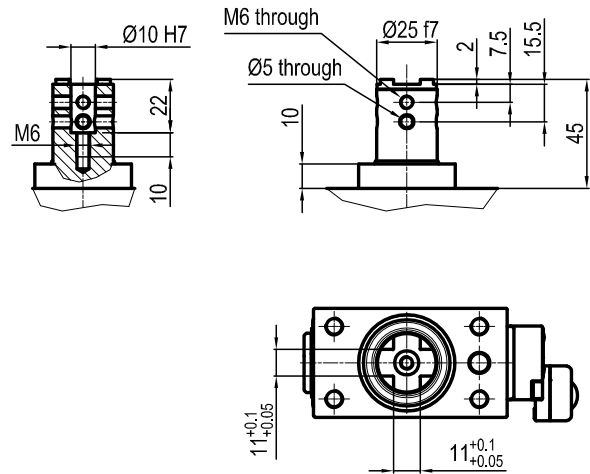
C Rod with cross-profiled end
Inner Ø16 mm



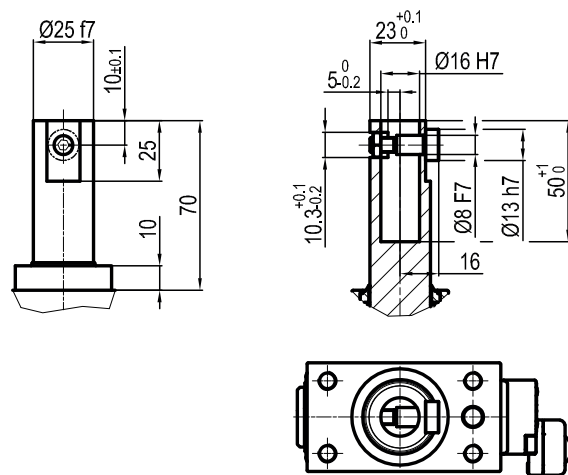
D Rod for offset pins
Oversized dowel holes



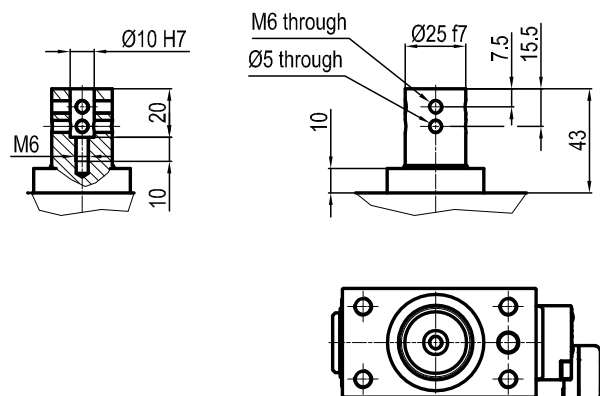
E Rod with cross-profiled end
Inner Ø10 mm



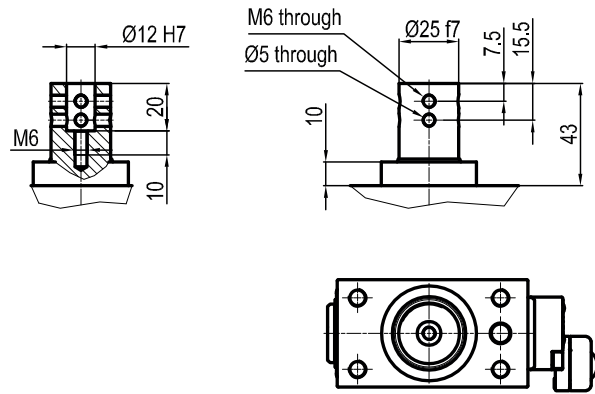
F Compatible with NAAMS
Inner Ø16 mm



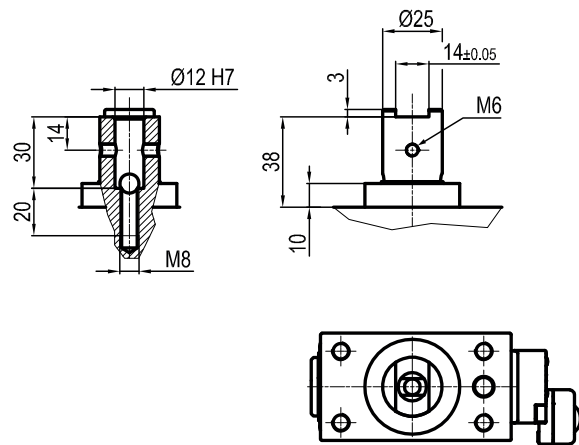
H Rod with flat end
Inner Ø10 mm



I Rod with flat end
Inner Ø12 mm



L Rod compatible with CNOMO standard
Inner Ø12 mm



M Rod compatible with CNOMO standard
Inner Ø20 mm

