

ULB 32

Pneumatic retractable locating pin unit, single rod, Ø32 mm with rear sensor

Pneumatic retractable pin unit, single rod, with rear sensor typically used on grippers and in welding applications to locate metal sheets in a definite position.

- Metal rod scraper
- Antirotation system
- Double guide to avoid backlash
- Optical sensor
- Many rod end styles available
- Sensor placed in rear position to facilitate installation when assembled on EOAT



3

CHARACTERISTICS

| | |
|------------------------------|----------------------|
| Operating temperature | 5° ÷ 45° C |
| Min./Max. operating pressure | 0,4 / 0,6 MPa |
| Bore Ø | 32 mm |
| Max Pull force (0,5 MPa) | 300 N |
| Max Push force (0,5 MPa) | 390 N |
| Max. Torque (6 Nm) | ± 0,06 mm |
| Max. Deflection (5,5 Nm) | ± 0,03 mm |
| Weight | 1,0 Kg |
| Pneumatic supply ports | G 1/8 |
| Sensor | electronic (optical) |
| Supply voltage | 10 ÷ 30 Vdc |
| IP code | IP 65 |

CODIFICATION KEY

UL | B | 32 | 040 | B | K | 0 | |

1 2 3 4 5 6 7 8



LIGHTWEIGHT



METAL SCRAPER



OPTICAL SENSOR



DOUBLE GUIDE



ANTI ROTATION



COMPACT

1 SERIES
UL = UNICLAMP locating pin unit

2 VERSION
B = Pneumatic, rear sensor, single rod

3 SIZE
32 = Ø32 mm

4 STROKE
020 = 20 mm
040 = 40 mm

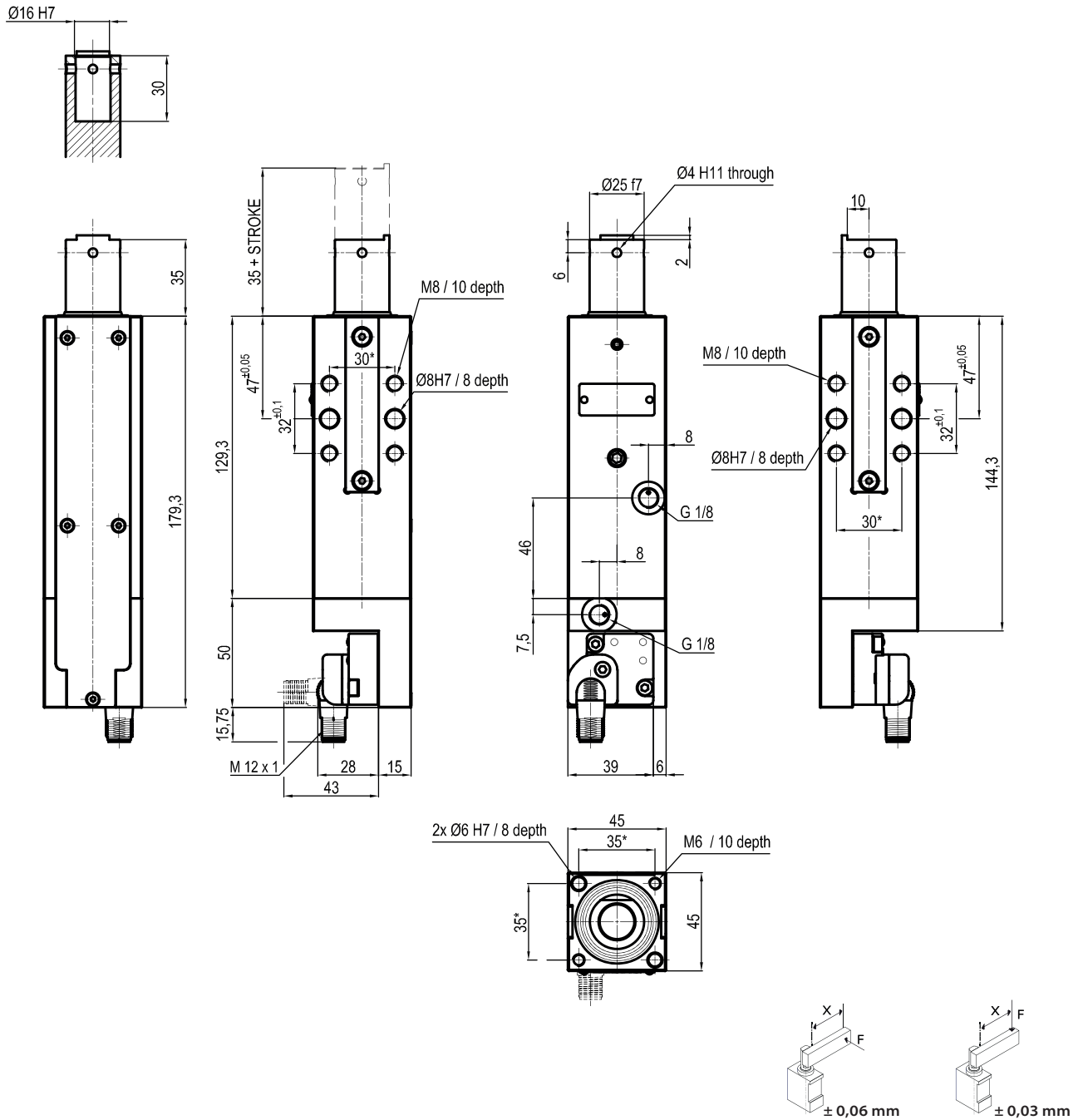
5 ROD END STYLE
B = Rod with profiled end
C = Rod with cross-profiled end inner Ø16 mm
E = Rod with cross-profiled end inner Ø10 mm

6 SENSOR
N = No sensor (with protection plate)
K = Electronic sensor PNP, M12 (DF-K)
J = Electronic sensor NPN, optical (DF-J)
Y = Electronic sensor PNP, M12 (DF-Y) white LED

7 PRODUCT REVISION
Assigned by UNIVER

8 ATEX
X = ATEX option
See ATEX Catalogue for types and versions

B Rod with profiled end



*TOLERANCE BETWEEN DOWELS ± 0,02 BETWEEN SCREW HOLES ± 0,1

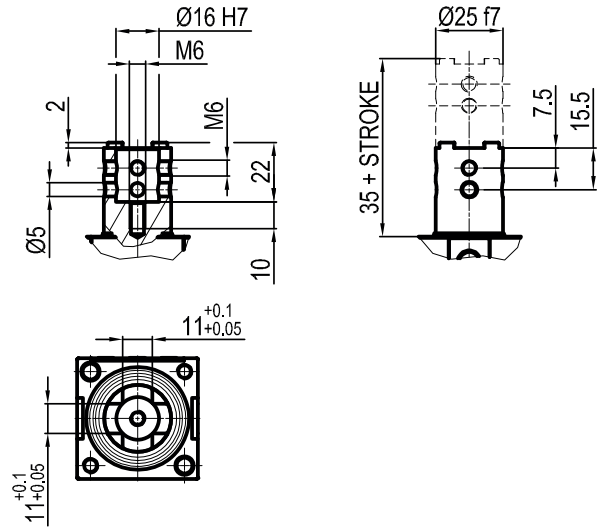
Sensors



Electronic (optical)

- DF-K PNP M12
- DF-J NPN M12
- DF-Y PNP M12 White LED

C Rod with cross-profiled end
Inner Ø16 mm



E Rod with cross-profiled end
Inner Ø10 mm

