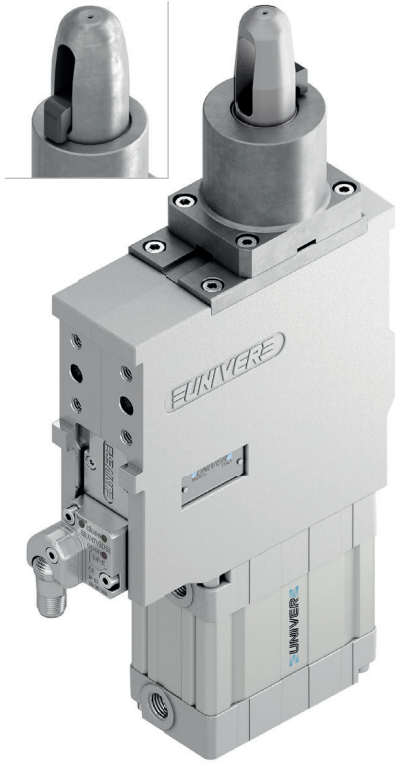


USS 63

Pneumatic pin clamp Ø63 mm, orientable hook, high compensation

Pneumatic pin clamps with orientable hook position and high compensation system mainly designed for centering and clamping metal sheets in BIW underbody applications.



- Integrated compensation up to 6 mm
- Double metal scraper for protection against dust and welding debris
- Toggle-joint mechanism
- High repeatability
- High wear resistance steel pin
- Electronic sensor
- Hook position: 0/180°
- Available version with plate machined from solid (no shimming)

CHARACTERISTICS

Operating temperature	5° ÷ 45° C
Min./Max. Operating pressure	0,4 / 0,6 MPa
Bore Ø	63 mm
Clamping force	3500 N
Weight (without plate, pin and hook)	3,1 kg
Pneumatic supply ports	G1/4 on both sides
Sensor	electronic (optical)
Supply voltage	10 ÷ 30 Vdc
IP code	IP 65

CODIFICATION KEY

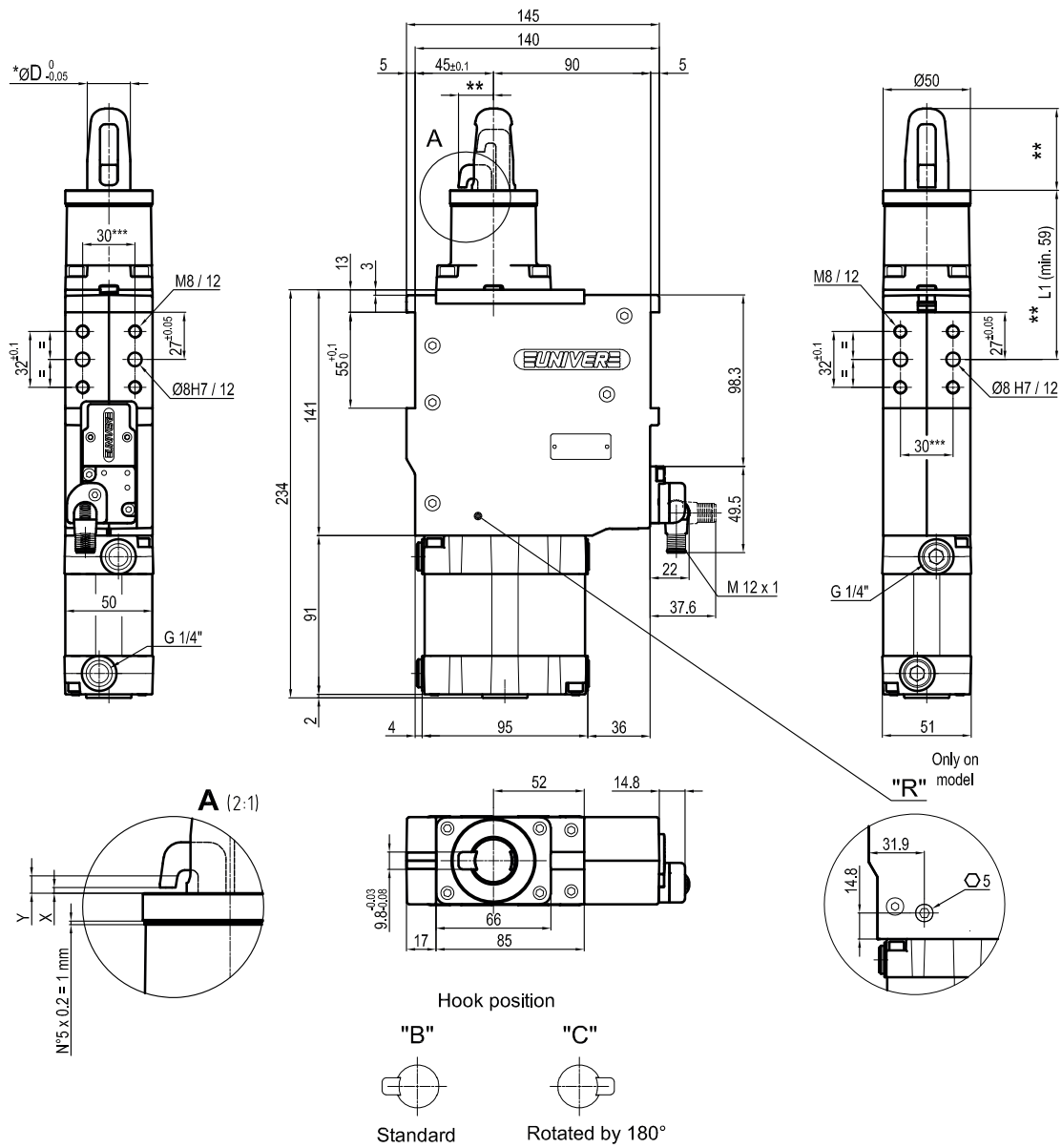


- IRREVERSIBLE
- LIGHTWEIGHT
- COMPENSATION
- METAL SCRAPER
- OPTICAL SENSOR
- HIGH REPEATABILITY
- 0/180°

- | | |
|---|--|
| <p>1 SERIES
US = UNICLAMP Pin clamp with compensation</p> <p>2 VERSION
S = Pneumatic with orientable hook</p> <p>3 SIZE
63 = Ø63 mm</p> <p>4 MODEL
J = Standard
R = With mechanical locking/unlocking device</p> <p>5 HOOK POSITION
B = Standard
C = Rotated by 180°</p> <p>6 PIN DIAMETER
1 < = Ø18 mm
2 = Ø20 mm
3 = Ø25 mm
4 = Ø30 mm
5 = Ø35 mm
6 = Ø40 mm

For pin Ø outside the mentioned range, please contact our sales department</p> | <p>7 LOCATING PIN
0 = Locating pin not included
1 = Locating pin included</p> <p>8 PROGRESSIVE NUMBERING
Progressive numbers for special products are assigned by the Sales Department</p> <p>9 SENSOR
N = No sensor (with protection plate)
K = Electronic sensor PNP, M12 (DF-K)
J = Electronic sensor NPN, optical (DF-J)
Y = Electronic sensor PNP, M12 (DF-Y) white LED</p> <p>10 PRODUCT REVISION
Assigned by UNIVER</p> <p>11 ATEX
X = ATEX option
See ATEX Catalogue for types and versions</p> |
|---|--|

6



6

X = Metal sheet
 Y = Clamping range (X + 6 mm Max.)
 VERSION WITHOUT PIN AND HOOK AVAILABLE UPON REQUEST
 ** MISSING DIMENSION TO BE DEFINED ACCORDING TO CUSTOMER SPECIFICATIONS
 *** TOLERANCE BETWEEN DOWEL HOLES $\pm 0,02$, BETWEEN SCREW HOLES $\pm 0,1$

*Pin Option	ØD
1	18
2	20
3	25
4	30
5	35
6	40

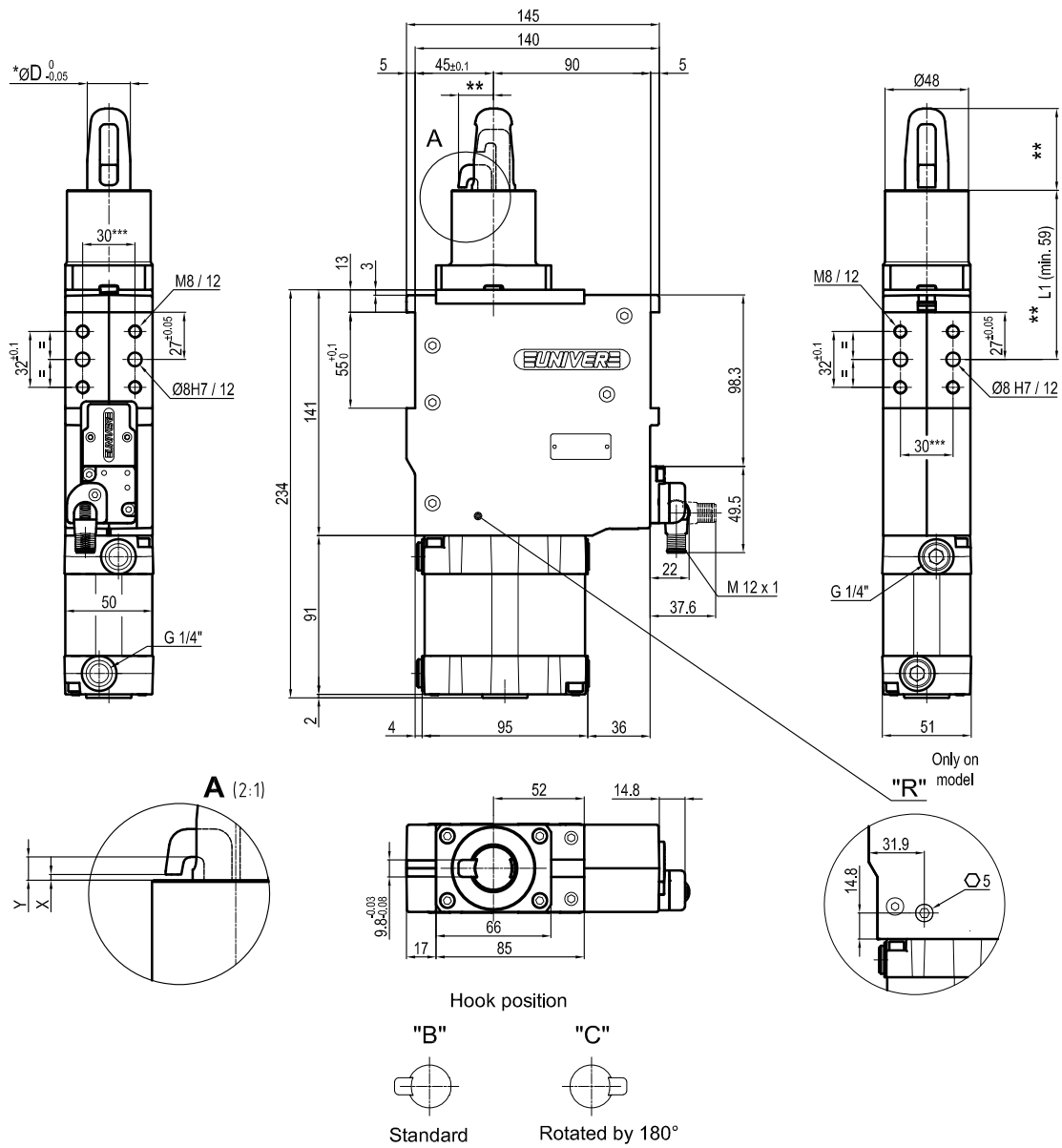
Sensors



Electronic (optical)

- DF-K PNP M12
- DF-J NPN M12
- DF-Y PNP M12 White LED

Version with plate machined from solid (no shimming)



X = Metal sheet
 Y = Clamping range (X + 6 mm Max.)
 VERSION WITHOUT PIN AND HOOK AVAILABLE UPON REQUEST
 ** MISSING DIMENSION TO BE DEFINED ACCORDING TO CUSTOMER SPECIFICATIONS
 *** TOLERANCE BETWEEN DOWEL HOLES ± 0,02, BETWEEN SCREW HOLES ± 0,1

*Pin Option	ØD
1	18
2	20
3	25
4	30
5	35
6	40

Sensors



Electronic (optical)

- DF-K PNP M12
- DF-J NPN M12
- DF-Y PNP M12 White LED