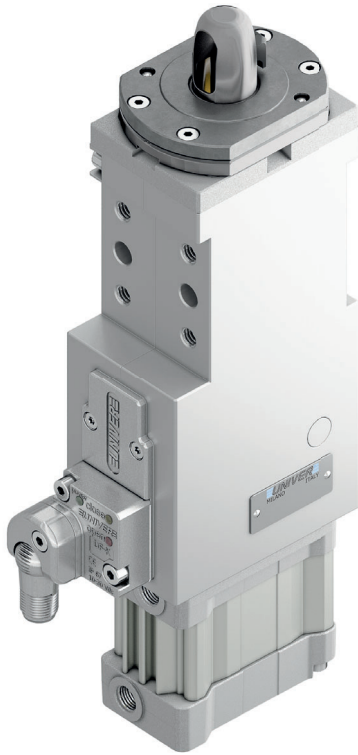


USR 40

Compact pin clamp with single or double hook, Ø40 mm

Compact pin clamp with single or double hook for centering and clamping. The compact and lightweight construction make this unit suitable for mounting on grippers and in applications where reduced dimensions are required

- Compact dimensions
- Integrated compensation up to 3 mm
- High wear resistance steel pin
- Protection against welding debris and dust
- Toggle-joint system
- Version with single or double hook
- Electronic sensor



CHARACTERISTICS

Operating temperature	5° ÷ 45° C
Min./Max. Operating pressure	0,4 / 0,6 MPa
Bore Ø	40 mm
Clamping force	900 N
Weight (without plate, pin and hook)	1,9 kg
Pneumatic supply ports	G1/8 on both sides
Sensor	electronic (optical)
Supply voltage	10 ÷ 30 Vdc
IP code	IP 65

6

CODIFICATION KEY

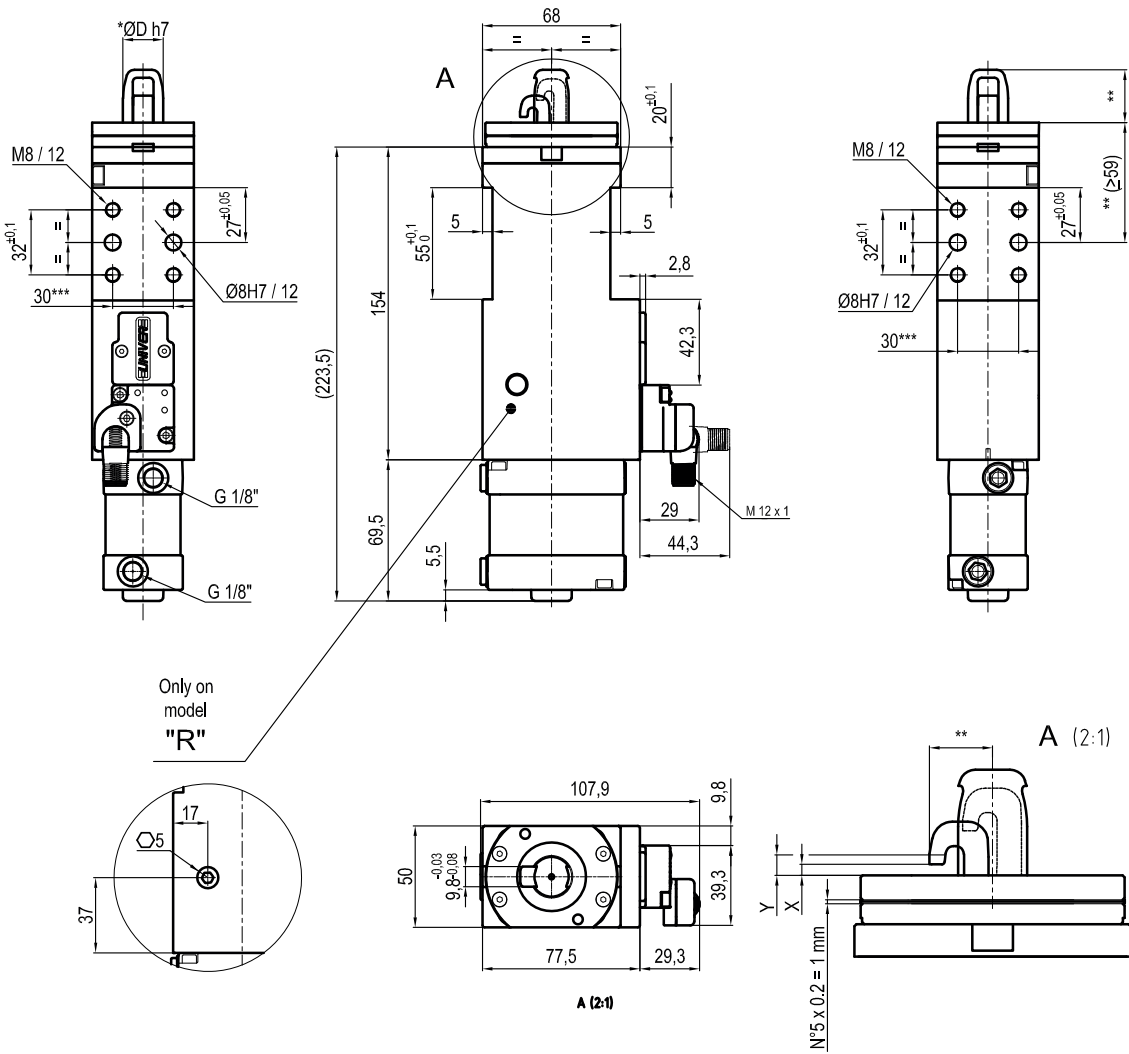
US | R | 40 | J | 3 | 1 | S | - | K | 0 | |

1 2 3 4 5 6 7 8 9 10 11

- IRREVERSIBLE
- LIGHTWEIGHT
- COMPENSATION
- COMPACT
- OPTICAL SENSOR
- HIGH REPEATABILITY
- METAL SCRAPER

1	SERIES US = UNICLAMP Pin clamp	6	LOCATING PIN 0 = Locating pin not included 1 = Locating pin included
2	VERSION R = Pneumatic compact	7	HOOK S = Single hook D = Double hook, standard without compensation* (model F) *For version with compensation please contact our sales department
3	SIZE 40 = Ø40 mm	8	PROGRESSIVE NUMBERING Progressive numbers for special products are assigned by the Sales Department
4	MODEL J = Standard R = With mechanical locking/unlocking device F = Without compensation	9	SENSOR N = No sensor (with protection plate) K = Electronic sensor PNP, M12 (DF-K) J = Electronic sensor NPN, optical (DF-J) Y = Electronic sensor PNP, M12 (DF-Y) white LED
5	PIN DIAMETER 1 < = Ø19 mm 2 = Ø20 mm 3 = Ø25 mm 4 = Ø30 mm 5 = Ø35 mm 6 = Ø40 mm For pin Ø outside the mentioned range, please contact our sales department	10	PRODUCT REVISION Assigned by UNIVER
		11	ATEX X = ATEX option See ATEX Catalogue for types and versions

S Single hook



6

X = Metal sheet
 Y = Clamping range (X + 3 mm Max.)
 VERSION WITHOUT PIN AND HOOK AVAILABLE UPON REQUEST
 ** MISSING DIMENSION TO BE DEFINED ACCORDING TO CUSTOMER SPECIFICATIONS
 *** TOLERANCE BETWEEN DOWEL HOLES ± 0,02, BETWEEN SCREW HOLES ± 0,1

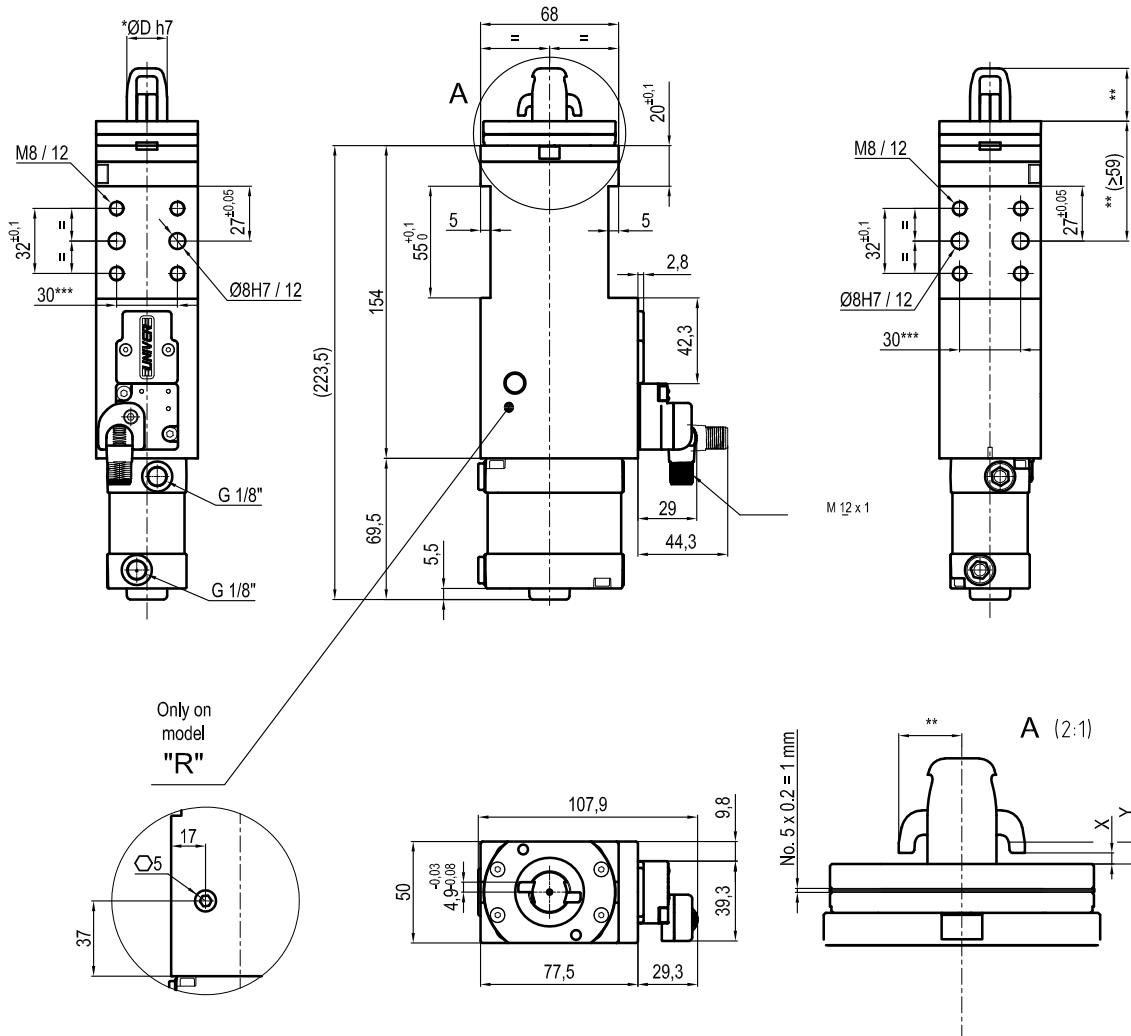
Sensors



Electronic (optical)

- DF-K PNP M12
- DF-J NPN M12
- DF-Y PNP M12 White LED

D Double hook



6

*Pin Option	ØD
1	15,8
2	20
3	25
4	30

X = Metal sheet
 Y = Clamping range (X + 3 mm Max.)
 VERSION WITHOUT PIN AND HOOK AVAILABLE UPON REQUEST
 ** MISSING DIMENSION TO BE DEFINED ACCORDING TO CUSTOMER SPECIFICATIONS
 *** TOLERANCE BETWEEN DOWEL HOLES ± 0,02, BETWEEN SCREW HOLES ± 0,1

Sensors



Electronic (optical)

- DF-K PNP M12
- DF-J NPN M12
- DF-Y PNP M12 White LED