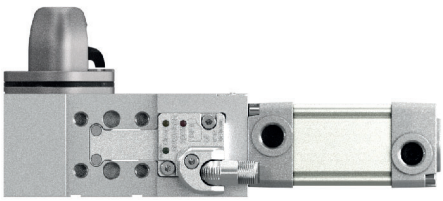
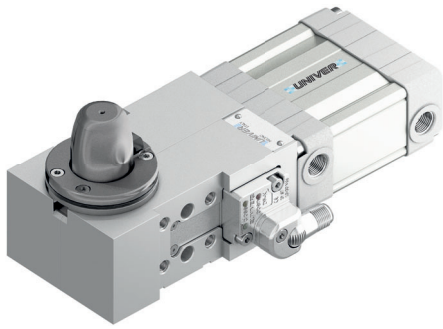


# USP 50U

Pneumatic pin clamp - Horizontal shape, Ø50 mm

Pneumatic pin clamp with horizontal shape, mainly designed for centering and clamping metal sheets in BIW underbody applications. Thanks to the flat shape it is widely used in applications where the installation space is very small



- Integrated compensation up to 0,5 mm
- Protection against welding debris and dust
- Toggle-joint mechanism
- High repeatability
- Two sided sensor mounting
- Electronic sensor

## CHARACTERISTICS

Operating temperature	5° ÷ 45° C
Min./Max. Operating pressure	0,4 / 0,6 MPa
Bore Ø	50 mm
Clamping force	2500 N
Weight (without plate, pin and hook)	2,2 kg
Pneumatic supply ports	G1/8 on both sides
Sensor	electronic (optical)
Supply voltage	10 ÷ 30 Vdc
IP code	IP 65

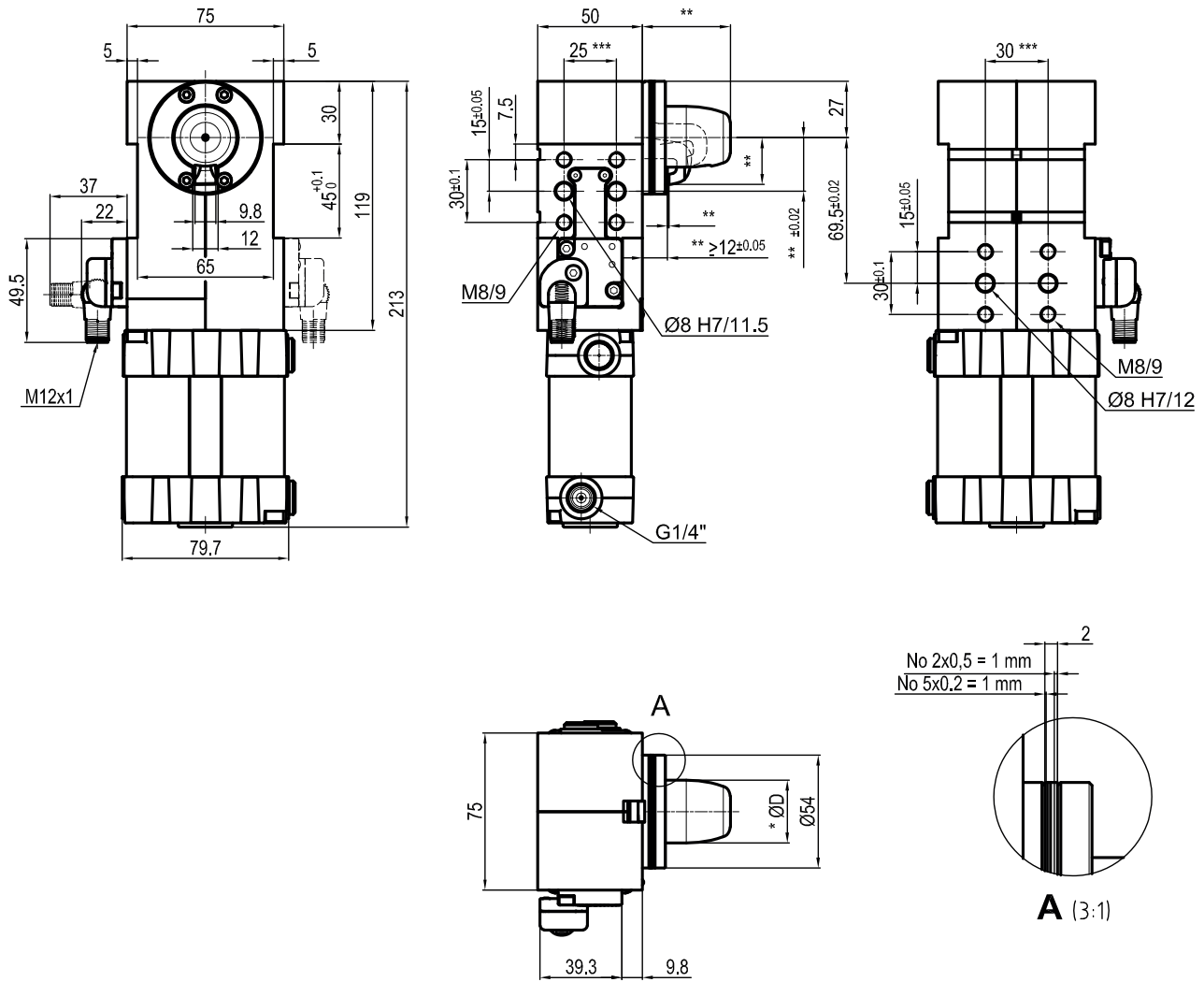
6

## CODIFICATION KEY

US | P | 50 | U | 3 | 1 | L | - | K | | | |  
 1 2 3 4 5 6 7 8 9 10 11

- IRREVERSIBLE
- LIGHTWEIGHT
- METAL SCRAPER
- OPTICAL SENSOR
- HIGH REPEATABILITY

- |   |  |
|---|--|
| <p><b>1</b> SERIES<br/>US = UNICLAMP Pin clamp with compensation</p> <p><b>2</b> VERSION<br/>P = Pneumatic</p> <p><b>3</b> SIZE<br/>50 = Ø50 mm</p> <p><b>4</b> MODEL<br/>U = Horizontal shape</p> <p><b>5</b> PIN DIAMETER<br/>1 &lt; = Ø19 mm<br/>2 = Ø20 mm<br/>3 = Ø25 mm<br/>4 = Ø30 mm<br/>5 = Ø35 mm<br/><small>For pin Ø outside the mentioned range, please contact our sales department</small></p> | <p><b>6</b> LOCATING PIN<br/>0 = Locating pin not included<br/>1 = Locating pin included</p> <p><b>7</b> SENSOR POSITION<br/>L = Left side<br/>R = Right side</p> <p><b>8</b> PROGRESSIVE NUMBERING<br/>Progressive numbers for special products are assigned by the Sales Department</p> <p><b>9</b> SENSOR<br/>N = No sensor (with protection plate)<br/>K = Electronic sensor PNP, M12 (DF-K)<br/>J = Electronic sensor NPN, optical (DF-J)<br/>Y = Electronic sensor PNP, M12 (DF-Y) white LED</p> <p><b>10</b> PRODUCT REVISION<br/>Assigned by UNIVER</p> <p><b>11</b> ATEX<br/>X = ATEX option<br/><small>See ATEX Catalogue for types and versions</small></p> |
|---|--|



6

\*\* MISSING DIMENSION TO BE DEFINED ACCORDING TO CUSTOMER SPECIFICATIONS  
 \*\*\* TOLERANCE BETWEEN DOWEL HOLES ± 0,02, BETWEEN SCREW HOLES ± 0,1  
 THE SENSOR CAN BE MOUNTED ON EITHER RIGHT OR LEFT SIDE

*Pin Option	ØD
1	≤19
2	20
3	25
4	30
5	35
6	40

## Sensors



Electronic (optical)

- DF-K PNP M12
- DF-J NPN M12
- DF-Y PNP M12 White LED