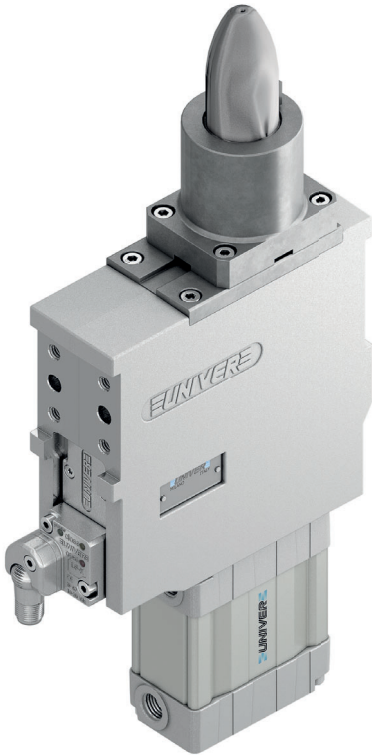


USP 50

Pneumatic pin clamp Ø50 mm

Pneumatic pin clamps mainly designed for centring and clamping metal sheets in BIW underbody applications.

- Integrated compensation up to 2,3 mm
- Double metal scraper for protection against dust and welding debris
- Toggle-joint mechanism
- High repeatability
- High wear resistance steel pin
- Electronic sensor
- Available version with plate machined from solid (no shimming)



CHARACTERISTICS

Operating temperature	5° ÷ 45° C
Min./Max. Operating pressure	0,4 / 0,6 MPa
Bore Ø	50 mm
Clamping force	3500 N
Weight (without plate, pin and hook)	2,9 kg
Pneumatic supply ports	G1/4 on both sides
Sensor	electronic (optical)
Supply voltage	10 ÷ 30 Vdc
IP code	IP 65

CODIFICATION KEY

US | P | 50 | J | 3 | 1 | - | K | 0 | | |

1 2 3 4 5 6 7 8 9



IRREVERSIBLE



LIGHTWEIGHT



COMPENSATION



METAL SCRAPER



OPTICAL SENSOR



HIGH REPEATABILITY

1

SERIES

US = UNICLAMP Pin clamp with compensation

2

VERSION

P = Pneumatic

3

SIZE

50 = Ø50 mm

4

MODEL

J = Standard
R = With mechanical locking/unlocking device

5

PIN DIAMETER

1 < = Ø18 mm
2 = Ø20 mm
3 = Ø25 mm
4 = Ø30 mm
5 = Ø35 mm
6 = Ø40 mm

For pin Ø outside the mentioned range, please contact our sales department

6

LOCATING PIN

0 = Locating pin not included
1 = Locating pin included

7

PROGRESSIVE NUMBERING

Progressive numbers for special products are assigned by the Sales Department

8

SENSOR

N = No sensor (with protection plate)
K = Electronic sensor PNP, M12 (DF-K)
J = Electronic sensor NPN, optical (DF-J)
Y = Electronic sensor PNP, M12 (DF-Y) white LED

9

PRODUCT REVISION

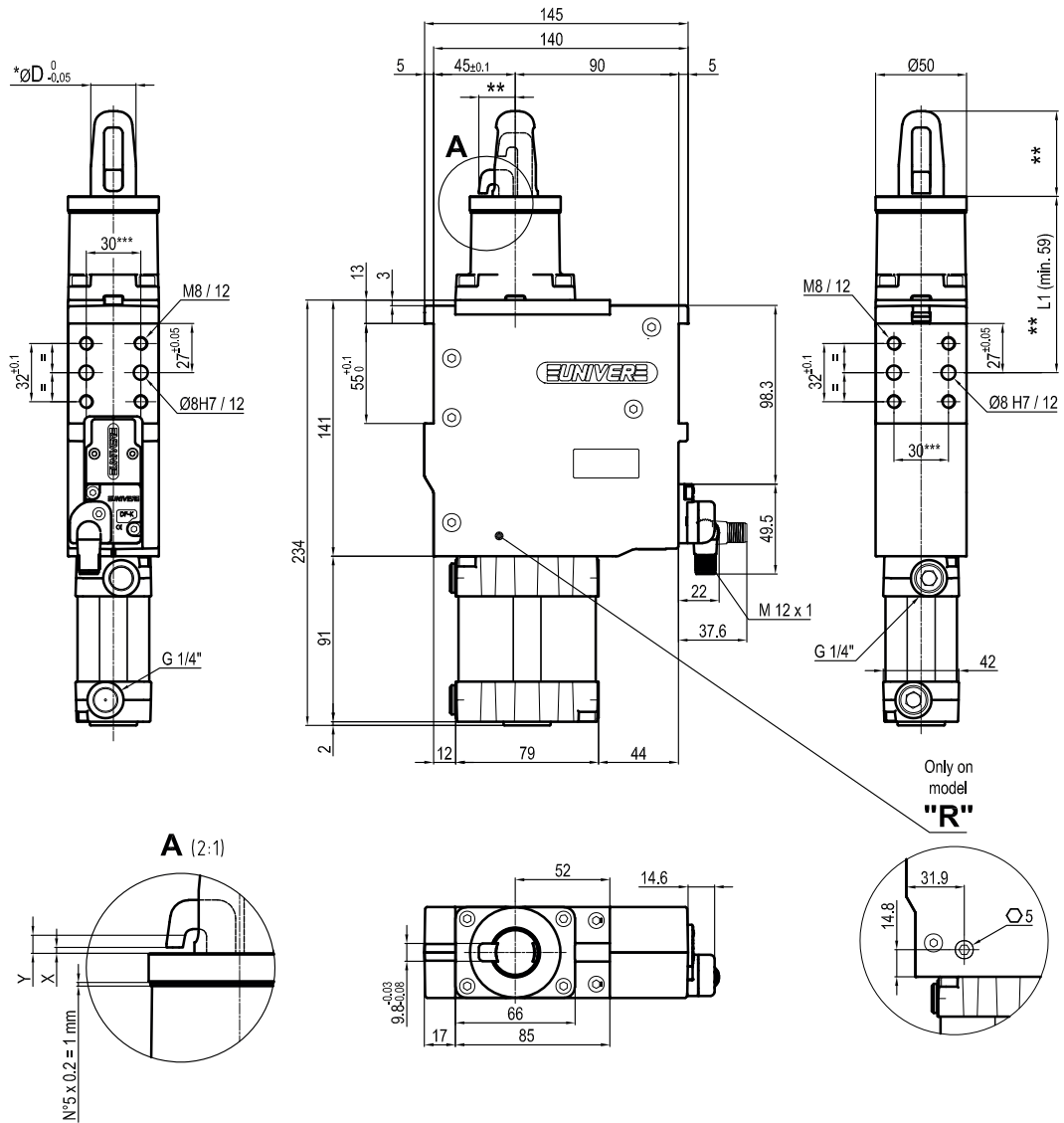
Assigned by UNIVER

10

ATEX

X = ATEX option
See ATEX Catalogue for types and versions

6



X = Metal sheet
 Y = Clamping range (X + 2,3 mm Max.)
 VERSION WITHOUT PIN AND HOOK AVAILABLE UPON REQUEST
 ** MISSING DIMENSION TO BE DEFINED ACCORDING TO CUSTOMER SPECIFICATIONS
 *** TOLERANCE BETWEEN DOWEL HOLES ± 0,02, BETWEEN SCREW HOLES ± 0,1

*Pin Option	ØD
1	18
2	20
3	25
4	30
5	35
6	40

Sensors

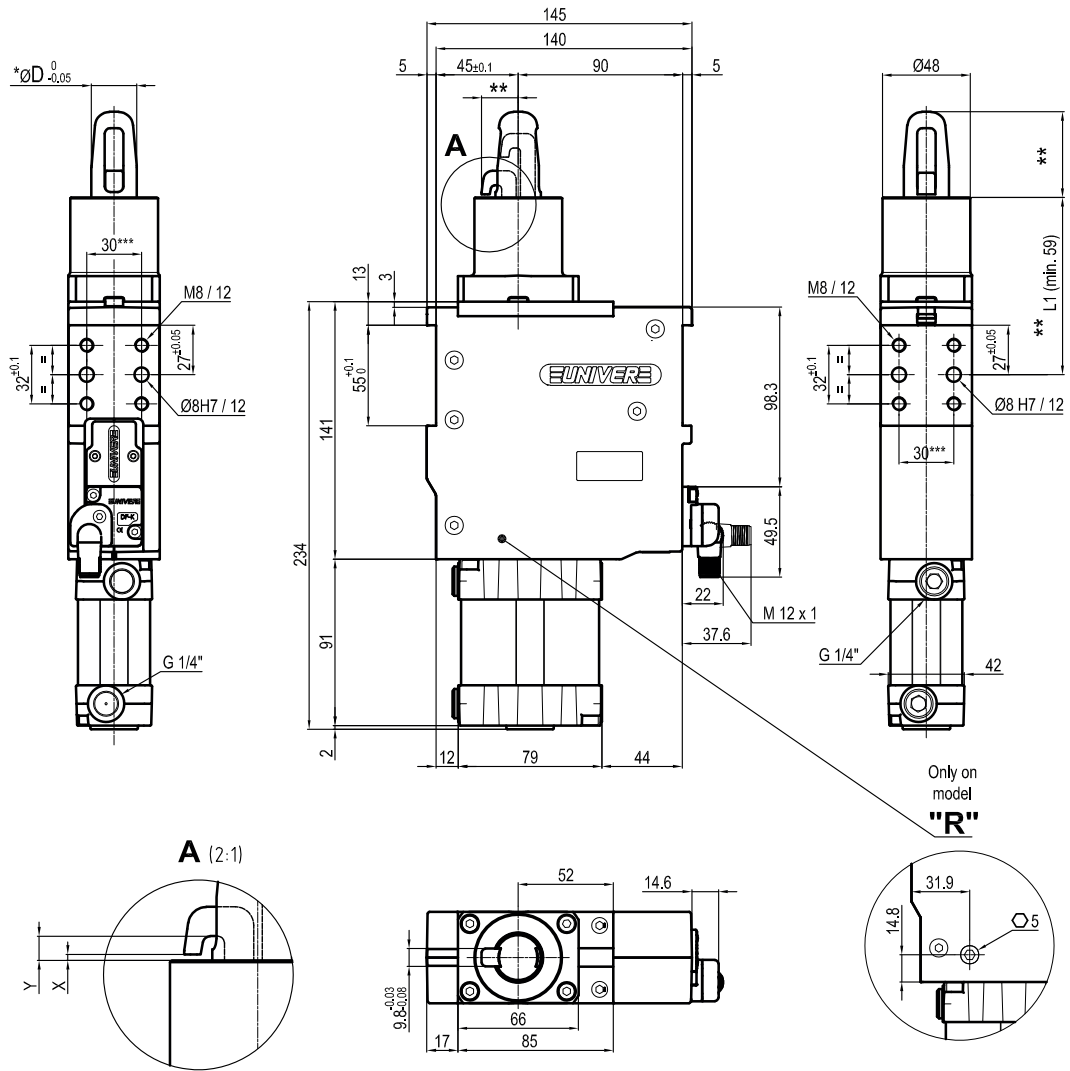


Electronic (optical)

- DF-K PNP M12
- DF-J NPN M12
- DF-Y PNP M12 White LED

6

Version with plate machined from solid (no shimming)



6

X = Metal sheet
 Y = Clamping range (X + 2,3 mm Max.)
 VERSION WITHOUT PIN AND HOOK AVAILABLE UPON REQUEST
 ** MISSING DIMENSION TO BE DEFINED ACCORDING TO CUSTOMER SPECIFICATIONS
 *** TOLERANCE BETWEEN DOWEL HOLES ± 0,02, BETWEEN SCREW HOLES ± 0,1

*Pin Option	ØD
1	18
2	20
3	25
4	30
5	35
6	40

Sensors



Electronic (optical)

- DF-K PNP M12
- DF-J NPN M12
- DF-Y PNP M12 White LED