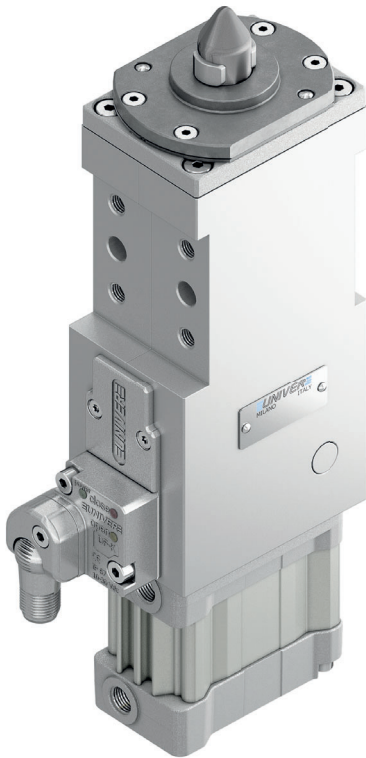


# USC 40

Compact retractable pin clamp with clamping fingers, Ø40 mm

Compact Pin Clamp with retractable clamping fingers for centering and clamping. The compact and lightweight construction make this unit suitable for mounting on grippers for handling pieces through a centering hole.



- Compact dimensions
- Integrated compensation up to 3 mm
- High wear resistance steel pin
- Protection against welding debris and dust
- Toggle-joint system
- Electronic sensor

## CHARACTERISTICS

Operating temperature	5° ÷ 45° C
Min./Max. Operating pressure	0,4 / 0,6 MPa
Bore Ø	40 mm
Clamping force	900 N
Weight (without plate and pin)	1,3 kg
Pneumatic supply ports	G1/8 on both sides
Sensor	electronic (optical)
Supply voltage	10 ÷ 30 Vdc
IP code	IP 65

6

## CODIFICATION KEY

US | C | 40 | J | 3 | 1 | - | K | 0 | |

1 2 3 4 5 6 7 8 9 10



IRREVERSIBLE



LIGHTWEIGHT



COMPENSATION



COMPACT



OPTICAL SENSOR



HIGH REPEATABILITY



METAL SCRAPER

1

### SERIES

US = UNICLAMP Pin clamp with compensation

2

### VERSION

C = Pneumatic compact with clamping fingers

3

### SIZE

40 = Ø40 mm

4

### MODEL

J = Standard  
R = With mechanical locking/unlocking device

5

### PIN DIAMETER

1 < = Ø15,8 mm  
2 = Ø20 mm  
3 = Ø25 mm  
4 = Ø30 mm

For pin Ø outside the mentioned range, please contact our sales department

6

### LOCATING PIN

1 = Locating pin included

7

### PROGRESSIVE NUMBERING

Progressive numbers for special products are assigned by the Sales Department

8

### SENSOR

N = No sensor (with protection plate)  
K = Electronic sensor PNP, M12 (DF-K)  
J = Electronic sensor NPN, optical (DF-J)  
Y = Electronic sensor PNP, M12 (DF-Y) white LED

9

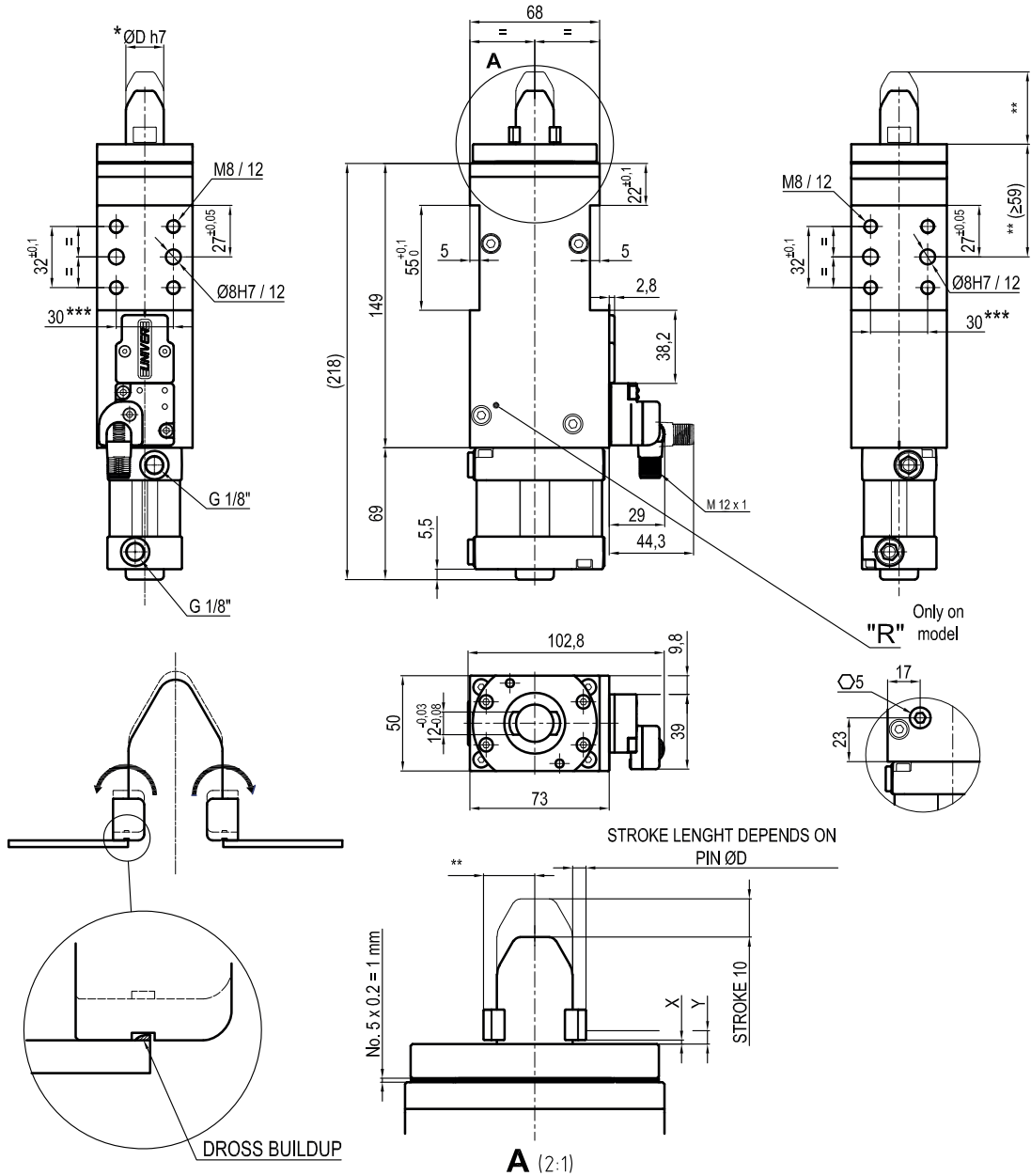
### PRODUCT REVISION

Assigned by UNIVER

10

### ATEX

X = ATEX option  
See ATEX Catalogue for types and versions



6

X = Metal sheet  
 Y = Clamping range (X + 3 mm Max.)  
 VERSION WITHOUT PIN AND HOOK AVAILABLE UPON REQUEST  
 \*\* MISSING DIMENSION TO BE DEFINED ACCORDING TO CUSTOMER SPECIFICATIONS  
 \*\*\* TOLERANCE BETWEEN DOWEL HOLES  $\pm 0,02$ , BETWEEN SCREW HOLES  $\pm 0,1$

*Pin Option	ØD
1	15,8
2	20
3	25
4	30

## Sensors



Electronic (optical)

- DF-K PNP M12
- DF-J NPN M12
- DF-Y PNP M12 White LED