

UGPS 32

Pneumatic gripper unit Ø32 mm

Pneumatic gripper unit Ø32 mm with single or double arms, typically used on End of Arm Tooling systems for handling work pieces.

- Compensation 1 mm (single) and 1,5 mm (double)
- Stepless adjustable opening angle
- Toggle-joint mechanism
- Two sided sensor mounting position
- Integrated pneumatic cushioning system
- 360° orbital orientation thanks to many different mounting elements
- Tips customisation

CHARACTERISTICS

Operating temperature	5° ÷ 45° C
Min./Max. Operating pressure	0,4 / 0,6 MPa
Opening angle	10° ÷ 50°
Bore Ø	32 mm
Holding moment	150 Nm
Clamping moment (0,5 MPa)	600 N
Weight (without tips)	1 Kg
Pneumatic supply ports	G1/8
Sensor	electronic (optical)
Supply voltage	10 ÷ 30 Vdc
IP code	IP 65

CODIFICATION KEY

UGP | S | 32 | D1 | A | K | R | 3 | 0 | |

1 2 3 4 5 6 7 8 9 10



COMPENSATION



LIGHTWEIGHT



IRREVERSIBLE



ANGLE ADJUSTMENT



OPTICAL SENSOR

1

SERIES

UGP = UNICLAMP Gripper units

2

ARM MATERIAL

S = Steel

3

SIZE

32 = Ø 32 mm

4

ARM

S0 = Single arm, without jaws

S1 = Single arm, jaws set for 1 pair of tips

S2 = Single arm, jaws set for 2 pairs of tips

D0 = Double arms, without jaws

D1 = Double arms, jaws set for 1 pair of tips

D2 = Double arms, jaws set for 2 pair of tips

5

TIPS

0 = No tips

A = Knurled tips

B = Self-adjusting knurled tips

C = Flat tips

D = Concave/Convex tips (1+1)

E = Self adjusting flat tips

6

SENSOR

N = No sensor (with protection plate)

K = Electronic sensor PNP, M12 (DF-K)

J = Electronic sensor NPN, optical (DF-J)

Y = Electronic sensor PNP, M12 (DF-Y) white LED

7

SENSOR MOUNTING

N = No sensor

R = Right (ports side)

L = Left

8

MOUNTS

0 = No mount

1 = Middle flange mount (LGP32MP)

2 = 360° orbital mount, ball Ø25 (LGP32MO25)

3 = 360° orbital mount, ball Ø30 (LGP32MO30)

6 = Rear flange mount (LGP32PT070)

9

PRODUCT REVISION

Assigned by UNIVER

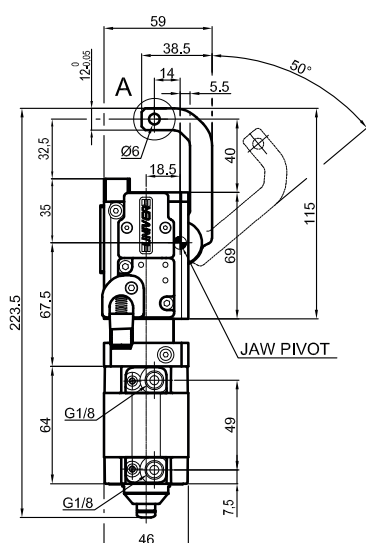
10

ATEX

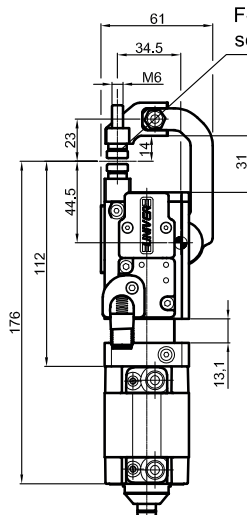
X = ATEX option

See ATEX Catalogue for types and versions

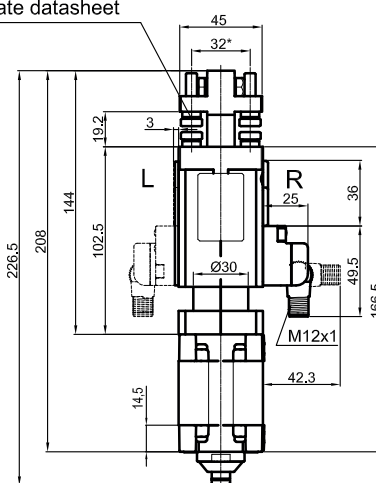
S | Single arm



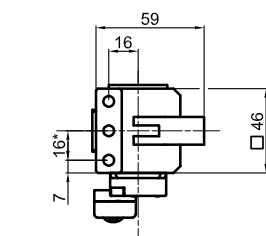
UGPS32S00K_0



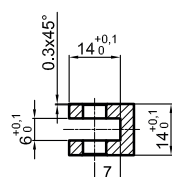
UGPS32S1_K_0



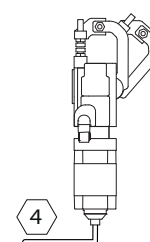
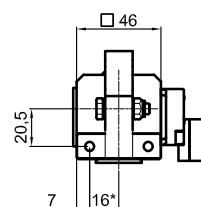
UGPS32S2_K_0



A (2:1)



B-B (2:1)



* TOLERANCE BETWEEN DOWELS $\pm 0,02$, BETWEEN SCREW HOLES $\pm 0,1$

Sensors



Electronic (optical)

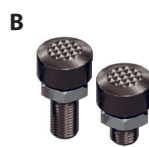
DF-K PNP M12
DF-J NPN M12
DF-Y PNP M12 White LED

Tips



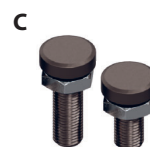
Knurled

LGPK6932A-L
LGPK6932A-C



Knurled
Self adjusting

LGPK6932B-L
LGPK6932B-C



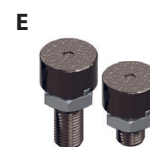
Flat

LGPK6932C-L
LGPK6932C-C



Concave/Convex

LGPK6932D-C

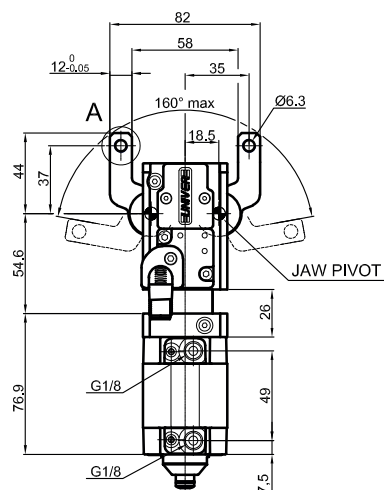


Flat
Self adjusting

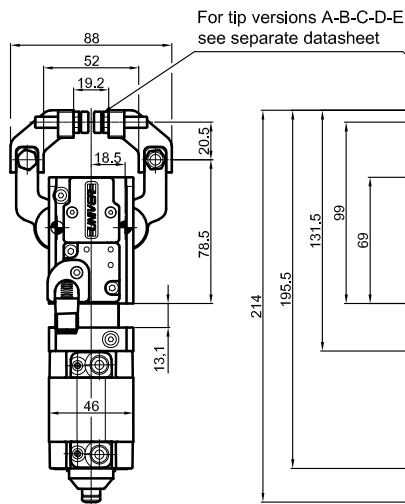
LGPK6932E-L
LGPK6932E-C

D Double arm

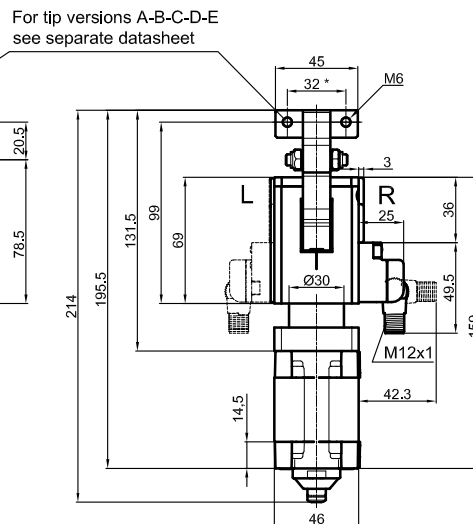
4



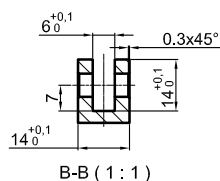
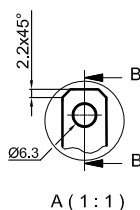
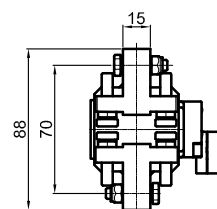
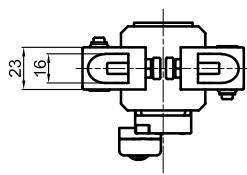
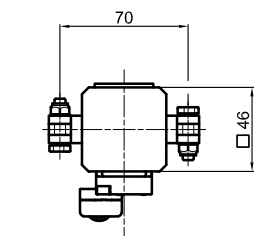
UGPS32D00K_0



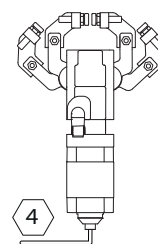
UGPS32D1_K_0



UGPS32D2_K_0



* TOLERANCE BETWEEN DOWELS $\pm 0,02$, BETWEEN SCREW HOLES $\pm 0,1$



Sensors

Tips



Electronic (optical)

DF-K PNP M12
DF-J NPN M12
DF-Y PNP M12 White LED



Knurled

LGPK6932A-L



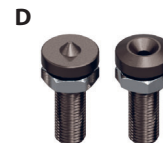
Knurled
Self adjusting

LGPK6932B-L



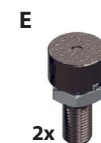
Flat

LGPK6932C-L



Concave/Convex

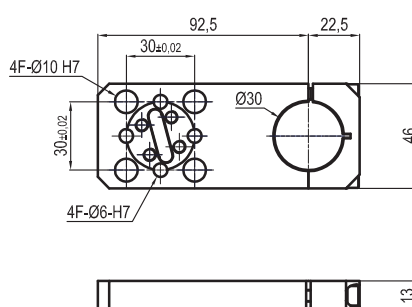
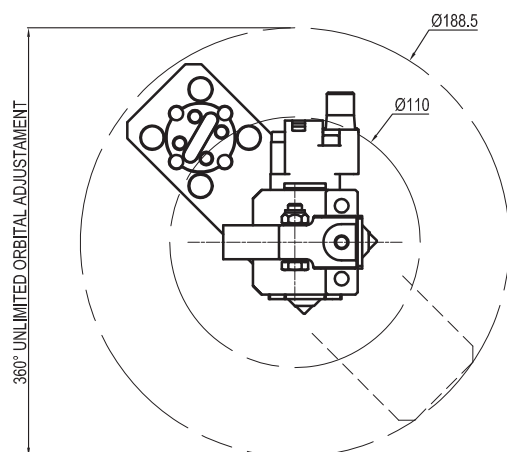
LGPK6932D-L



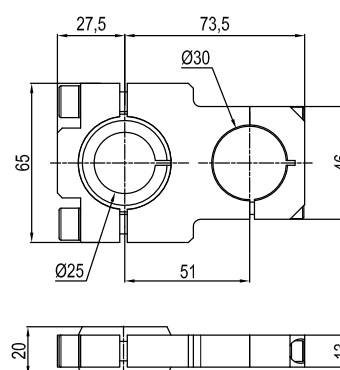
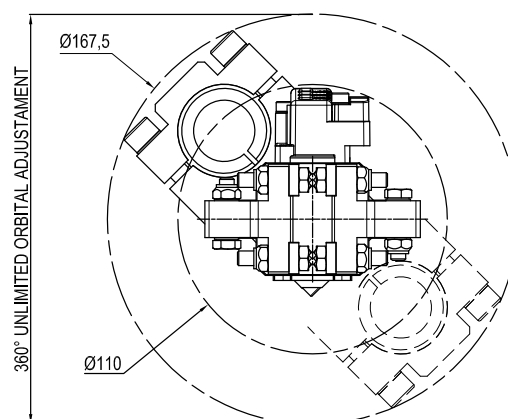
Flat
Self adjusting

LGPK6932E-L

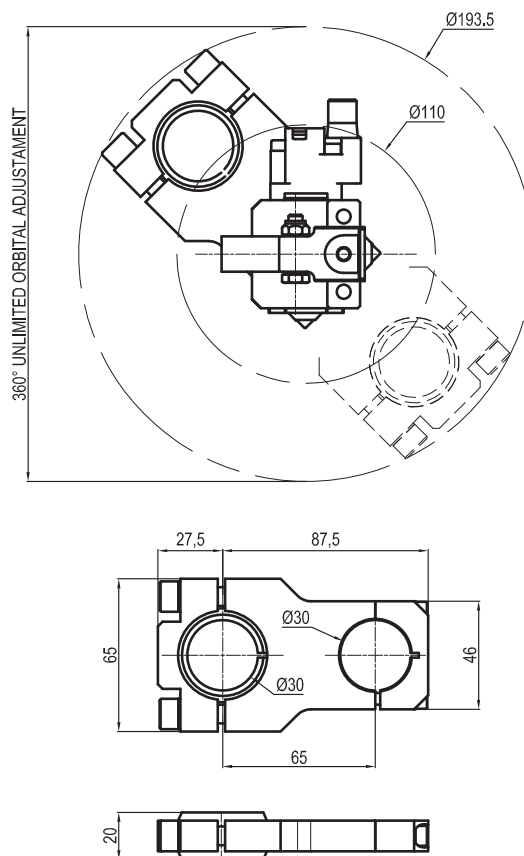
1 Middle flange mount LGP32MP



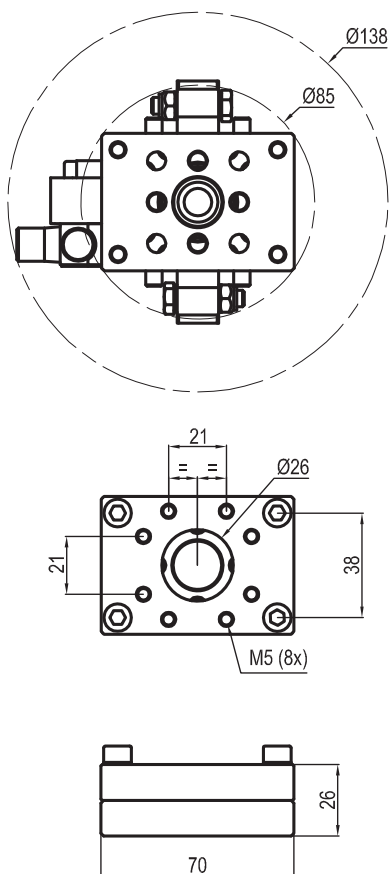
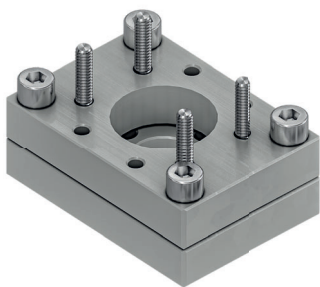
2 360° Orbital mount Ball Ø25 - LGP32MO25

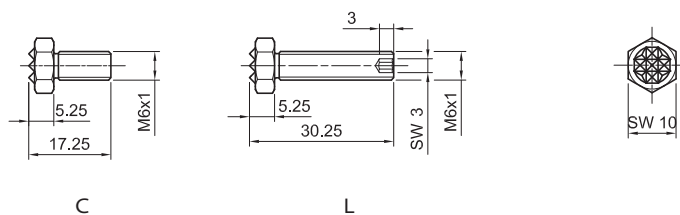


3 360° Orbital mount
Ball Ø30 - **LGP32MO30**

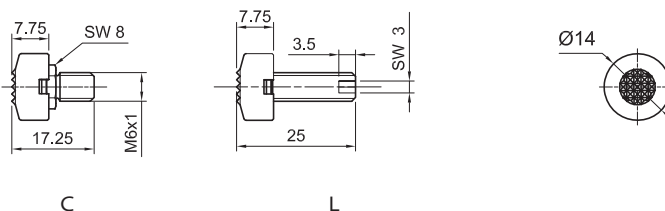


6 Rear flange mount
LGP32PT070



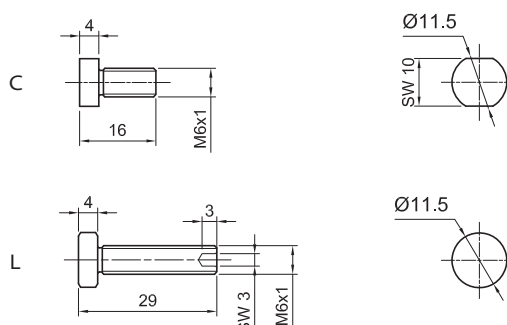
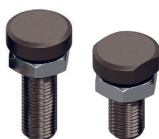
A Knurled

Tips	Weight
LGPK6932A-L	10g
LGPK6932A-C	7g

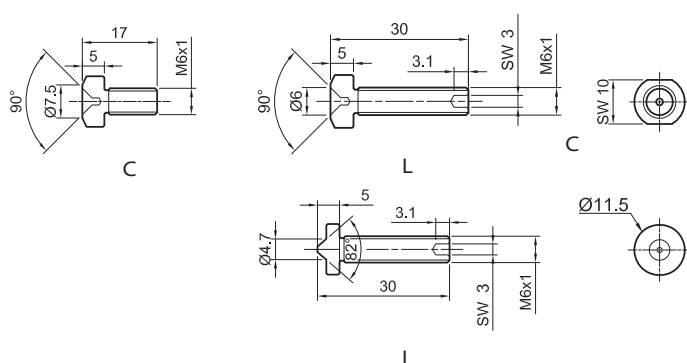
B Knurled
Self adjusting

Tips	Weight
LGPK6932B-L	9,5g
LGPK6932B-C	12g

4

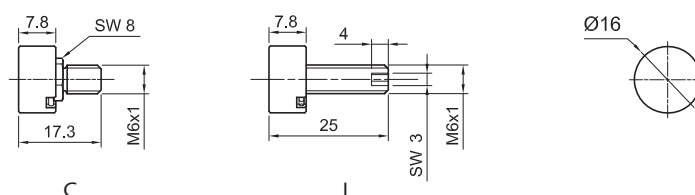
C Flat

Tips	Weight
LGPK6932A-L	10g
LGPK6932A-C	7g

D Concave/Convex

Concave	
Tips	Weight
LGPK6932D-L	10g
LGPK6932D-C	8g

Convex	
Tips	Weight
LGPK6932D-L	11g

E Flat
Self adjusting

Tips	Weight
LGPK6932E-L	13g
LGPK6932E-C	10g