

UCNP 80

Pneumatic power clamps conforming to the NAAMS standard, Ø80 mm
 Pneumatic power clamps size Ø80 mm conforming to the NAAMS standard with compensation system, toggle-joint mechanism and stepless adjustable opening angle, typically used for handling and holding metal sheets in welding applications



- Lightweight aluminium construction
- Integrated compensation system up to 2,9 mm
- Version with manual hand lever available
- Fully optical electronic sensor or pneumatic sensor
- Fixing pattern on 4 sides
- Manual unlocking in case of air loss
- Drive shaft for wishbone or blade arms
- NPT or GAS connections
- Self-holding system for open position available

2

CHARACTERISTICS

Operating temperature	5° ÷ 45° C
Min./Max. operating pressure	0,4/0,6 Mpa
Opening angle*	0° ÷ 135°
Bore Ø	80 mm
Holding moment	4000 Nm
Clamping moment (0,5 MPa)	1100 Nm
Weight (clamping arm not included)	8,6 Kg
Pneumatic supply ports	1/4 on both sides
Sensor	electronic (optical)
Supply voltage	10 ÷ 30 Vdc
IP code	IP65

*The opening angle range may vary according to the arm position and style.

CODIFICATION KEY

UC | N | P | 80 | N | N | K | G | 0 | |
 1 | 2 | 3 | 4 | 5 | 6 | 7 | 8 | 9 | 10



COMPENSATION



LIGHTWEIGHT




IRREVERSIBLE



ANGLE ADJUSTMENT

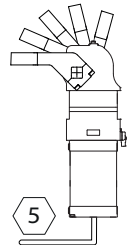
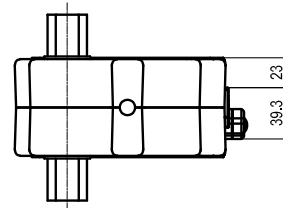
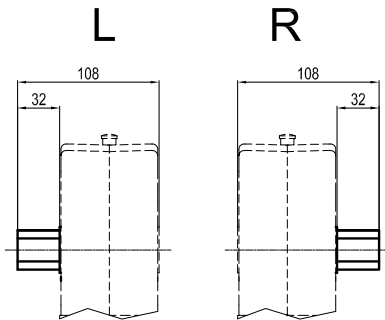
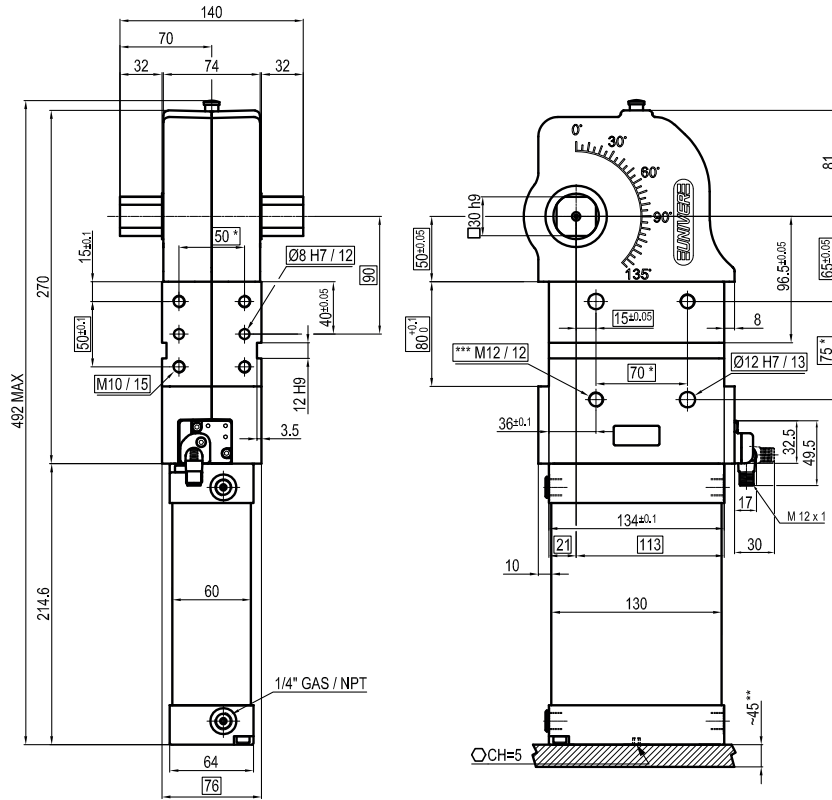


OPTICAL SENSOR

- 1 SERIES
UC = UNICLAMP Power clamps
- 2 STANDARD
N = NAAMS Standard
- 3 VERSION
P = Pneumatic
- 4 SIZE
80 = Ø 80 mm
- 5 ARM POSITION
N = No arm 
For clamping arms according to NAAMS standard, please contact our Sales Dept.

- 6 SQUARE SHAFT
R = Right side only
L = Left side only
N = Both sides
- 7 SENSOR
N = No sensor (with protection plate)
K = Electronic sensor PNP, M12 (DF-K)
D = Pneumatic sensor (DF-UPNW80)
J = Electronic sensor NPN, optical (DF-J)
Y = Electronic sensor PNP, M12 (DF-Y) white LED
- 8 PORT THREAD
G = Gas
N = NPT
- 9 PRODUCT REVISION
Assigned by UNIVER
- 10 ATEX
X = ATEX option
See ATEX Catalogue for types and versions

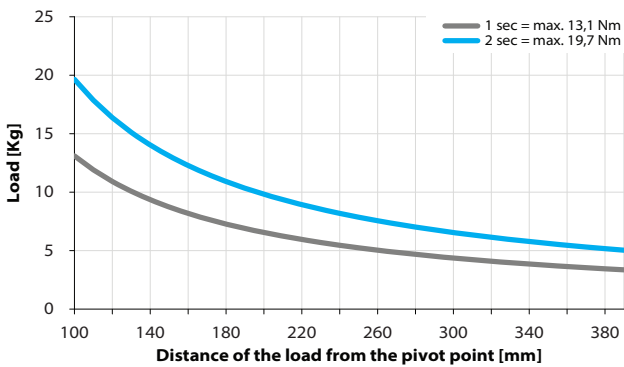
2



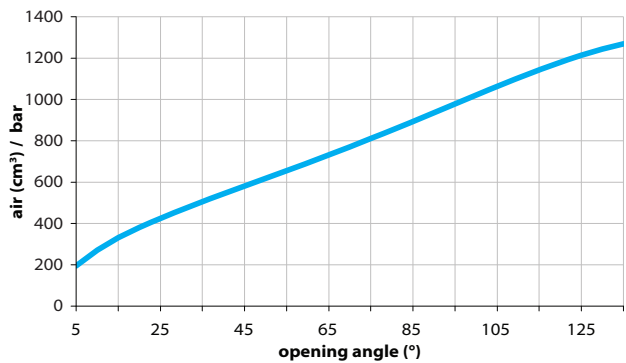
**TOLERANCE BETWEEN DOWELS ± 0,02 BETWEEN SCREW HOLES ± 0,1
 **AREA TO ACCESS ANGLE ADJUSTMENT
 ***SCREW THREAD INSERT

Maximum Applicable Load

Pressure: 5 bar - 90° cycle time (Open - Close)



Air Consumption per Cycle



Sensors



Electronic (optical)

DF-K PNP M12
DF-J NPN M12
DF-Y PNP M12 White LED



Pneumatic

DF-UPNW80

Accessories



Self holding system

UBK46P30N For blade arms
UBK46P30ND For wishbone arms