

UCIP 40

Pneumatic power clamps Ø40 mm interchangeable with Ø50-63 mm

Pneumatic power clamps size Ø40 mm with fixing patterns interchangeable with size Ø50-63mm, compensation system, toggle-joint mechanism and stepless adjustable opening angle, typically used for handling and holding metal sheets in welding applications



- Lightweight aluminium construction
- Compact dimensions
- Integrated compensation system up to 2 mm
- Version with manual hand lever available
- Fully optical electronic sensor or pneumatic sensor
- Fixing pattern on the front side
- Manual unlocking in case of air loss
- Self-holding system for open position available
- Clamping arm in aluminium

CHARACTERISTICS

Operating temperature	5° ÷ 45° C
Min./Max. Operating pressure	0,4 / 0,6 MPa
Opening angle*	0° ÷ 135°
Bore Ø	40 mm
Holding moment	600 Nm
Clamping moment (0,5 MPa)	170 Nm
Weight (clamping arm not included)	1,6 Kg
Pneumatic supply ports	G1/8 on both sides
Sensor	electronic (optical)
Supply voltage	10 ÷ 30 Vdc
IP code	IP65

*The opening angle range may vary according to the arm position and style.

CODIFICATION KEY

UC	I	P	40	O	E	A	N	K	0		
1	2	3	4	5	6	7	8	9	10	11	



COMPENSATION



LIGHTWEIGHT



IRREVERSIBLE



ANGLE ADJUSTMENT



OPTICAL SENSOR



COMPACT

1

SERIES
UC = UNICLAMP Power clamps

2

STANDARD
I = Interchangeable with size Ø50-63 mm

3

VERSION
P = Pneumatic

4

SIZE
40 = Ø 40 mm

5

ARM POSITION

V = 90°

O = 180°

N = No arm

6

ARM STYLE
C = Central, 15 mm offset
D = Right, 15 mm offset
S = Left, 15 mm offset
E = Central, 45 mm offset
F = Right, 45 mm offset
L = Left, 45 mm offset
N = No arm
For other versions contact our Sales Dept.

7

ARM TYPE
A = Aluminium
S = Steel
N = No arm

8

OPTION
N = Standard
A = Preset for self-holding system

9

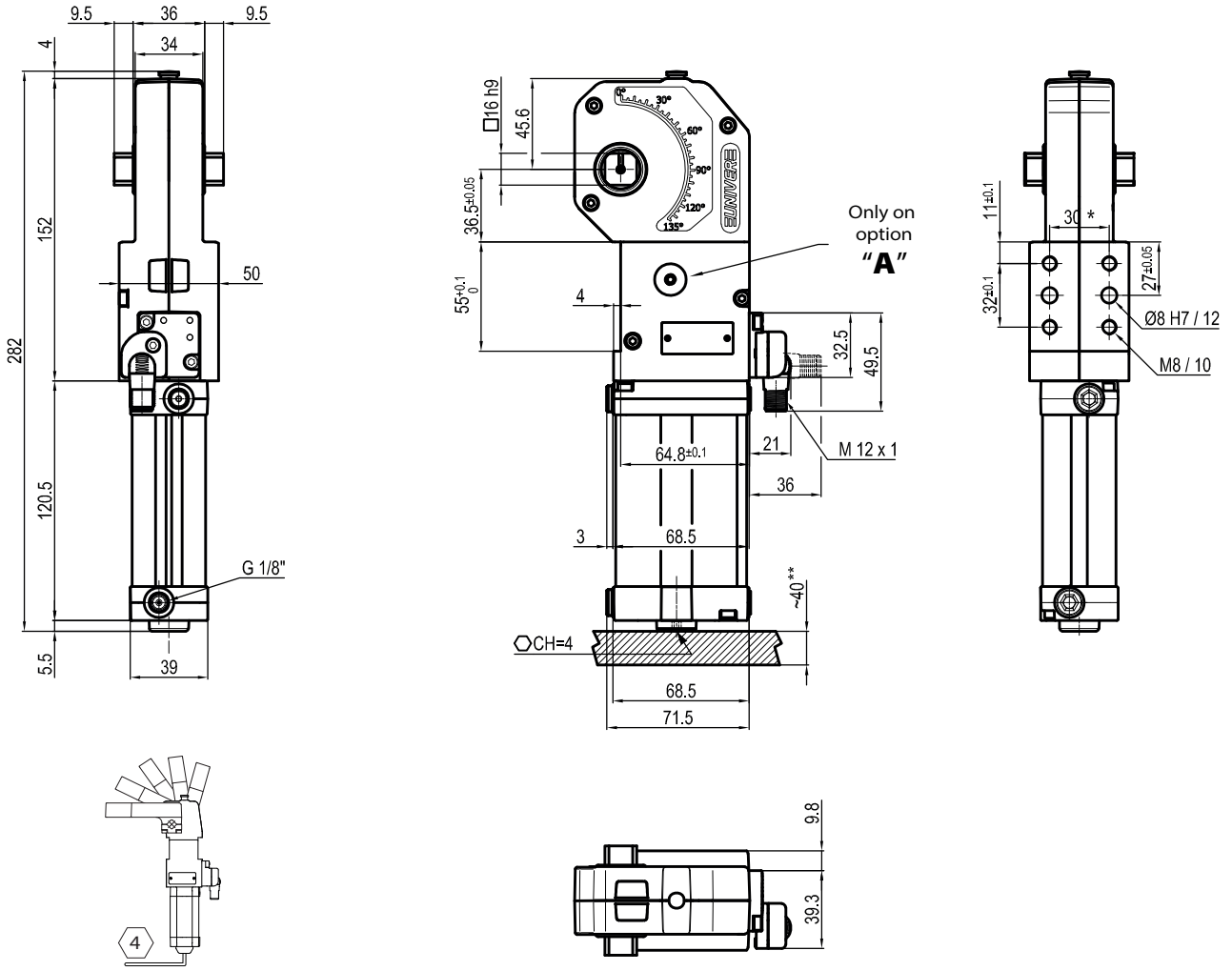
SENSOR
N = No sensor (with protection plate)
K = Electronic sensor PNP, M12 (DF-K)
D = Pneumatic sensor (DF-UPNW)
J = Electronic sensor NPN, optical (DF-J)
Y = Electronic sensor PNP, M12 (DF-Y) white LED

10

PRODUCT REVISION
Assigned by UNIVER

11

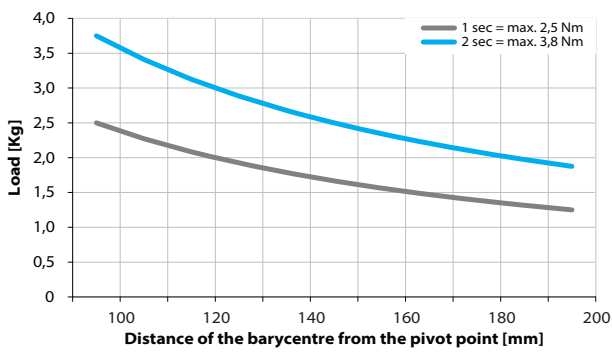
ATEX
X = ATEX option
See ATEX Catalogue for types and versions



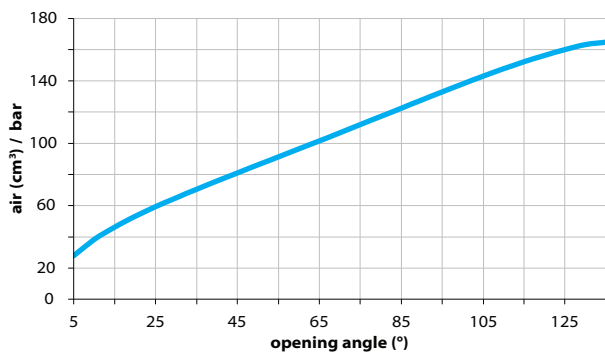
*TOLERANCE BETWEEN DOWELS ± 0,02 BETWEEN SCREW HOLES ± 0,1
 **AREA TO ACCESS ANGLE ADJUSTMENT

Maximum Applicable Load

Pressure: 5 bar - 90° cycle time (Open - Close)

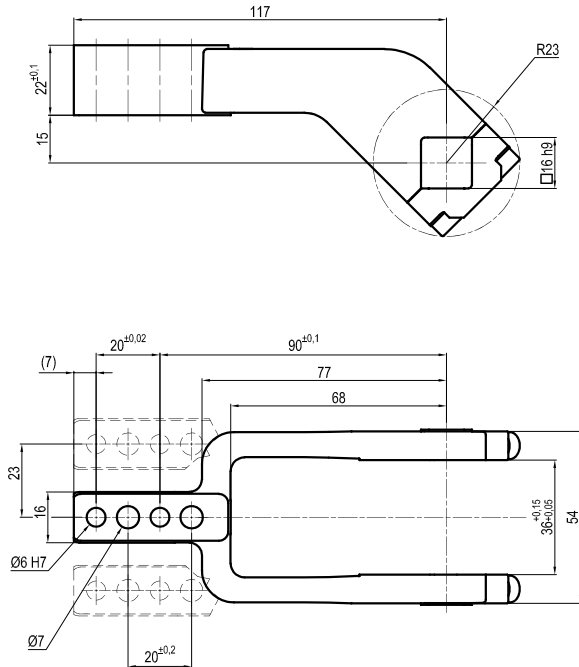


Air Consumption per Cycle

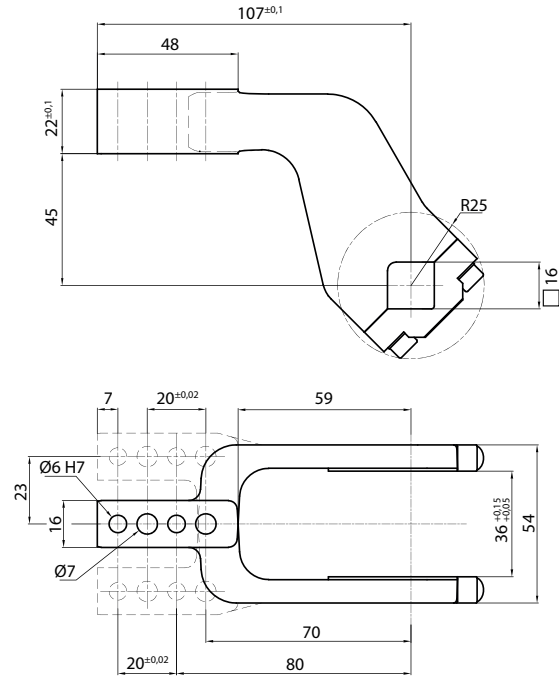


Clamping Arms

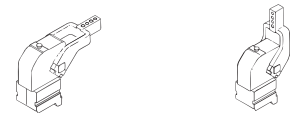
Arm Offset 15mm



Arm Offset 45mm



2



Armcode	Offset	Material	Arm style	Weight (Kg)	Opening angle (90°)	Opening angle (180°)
LKP01CST	15	ALUMINIUM	CENTRAL	0,2	0±135°	0±120°
LKP01DST	15	ALUMINIUM	RIGHT	0,2	0±135°	0±120°
LKP01SST	15	ALUMINIUM	LEFT	0,2	0±135°	0±120°
IKP40E	45	ALUMINIUM	CENTRAL	0,3	0±135°	0±135°
IKP40F	45	ALUMINIUM	RIGHT	0,3	0±135°	0±135°
IKP40L	45	ALUMINIUM	LEFT	0,3	0±135°	0±135°

Sensors



Electronic (optical)

DF-K PNP M12
DF-J NPN M12
DF-Y PNP M12 White LED



Pneumatic

DF-UPNW

Accessories



Self holding system

UBK46P16 For arm 15 offset
UBK46P16-45 For arm 45 offset