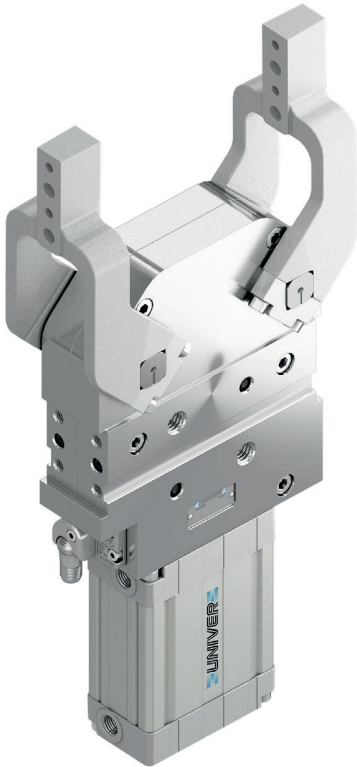


UCDP 63

Pneumatic power clamps Ø63 mm with double arm

Pneumatic power clamps size Ø63 mm with double arm, compensation system, toggle-joint mechanism and stepless adjustable opening angle, typically used for holding and positioning metal sheets or workpieces.

- Lightweight aluminium construction
- Compact dimensions
- Integrated compensation system
- Fully optical electronic sensor
- Fixing pattern on 4 sides
- Clamping arm in aluminium or steel



2

CHARACTERISTICS

Operating temperature	5° ÷ 45° C
Min./Max. Operating pressure	0,4 / 0,6 MPa
Opening angle*	0° ÷ 180°
Bore Ø	63 mm
Clamping moment (0,5 MPa)	130 Nm
Weight (clamping arm not included)	4,6 Kg
Pneumatic supply ports	G1/4 on both sides
Sensor	electronic (optical)
Supply voltage	10 ÷ 30 Vdc
IP code	IP65

*The opening angle range may vary according to the arm position and style.

CODIFICATION KEY

UC	D	P	63	D	C	A	K	0	
1	2	3	4	5	6	7	8	9	10



COMPENSATION



LIGHTWEIGHT



IRREVERSIBLE



ANGLE ADJUSTMENT



OPTICAL SENSOR



COMPACT

1

SERIES
UC = UNICLAMP Power clamps

2

STANDARD
D = With double arm

3

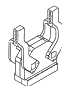
VERSION
P = Pneumatic

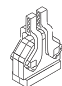
4

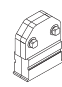
SIZE
63 = Ø 63 mm

5

ARM POSITION

D = Double arm 

I = Double arm overturned (only 15mm offset) 

N = No arm 

6

ARM STYLE

C = Central, 15 mm offset
D = Right, 15 mm offset
S = Left, 15 mm offset
E = Central, 45 mm offset
F = Right, 45 mm offset
L = Left, 45 mm offset
N = No arm

For other versions contact our Sales Dept.

7

ARM TYPE

A = Aluminium
S = Steel
N = No arm

8

SENSOR

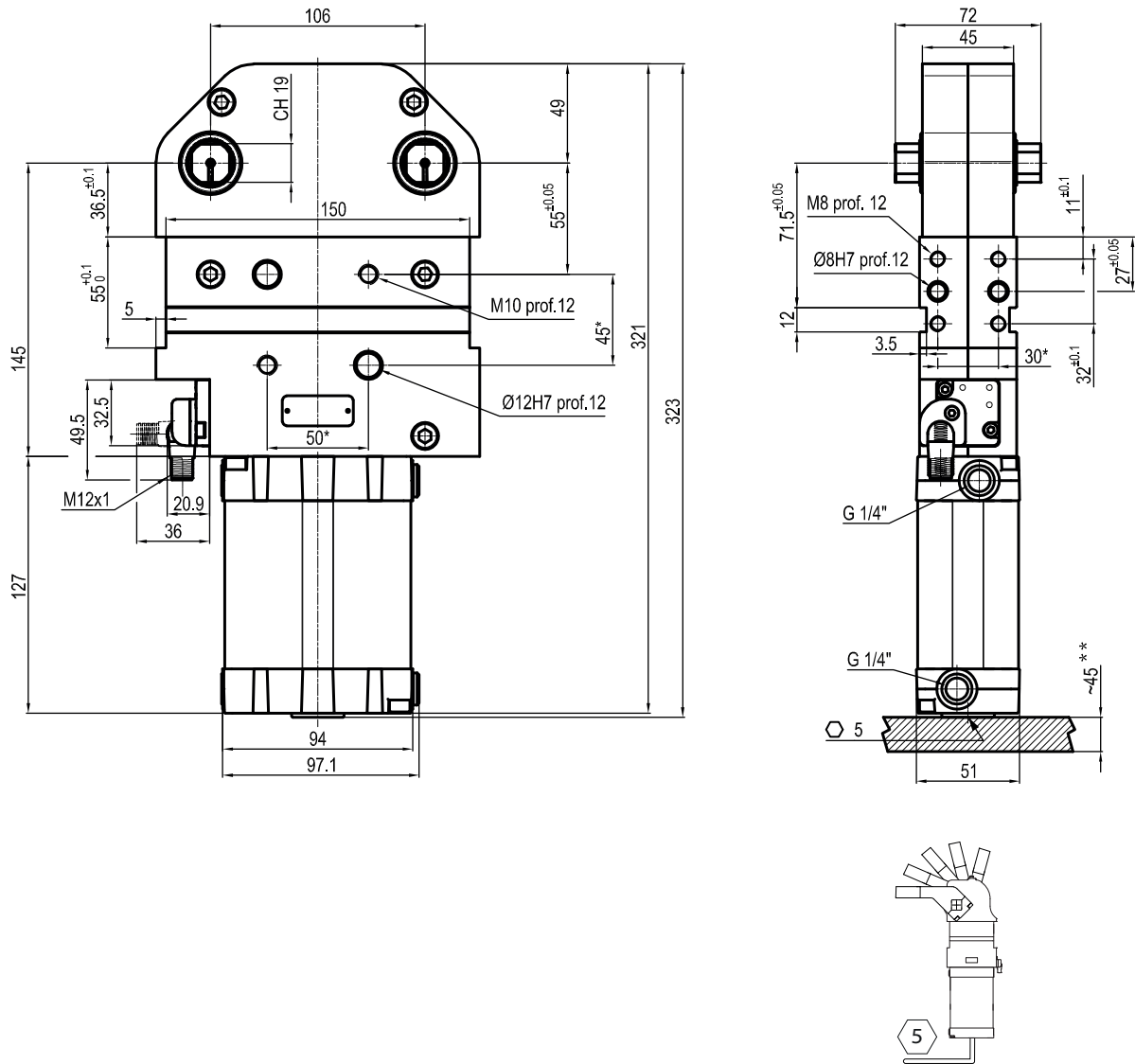
N = No sensor (with protection plate)
K = Electronic sensor PNP, M12 (DF-K)
J = Electronic sensor NPN, optical (DF-J)
Y = Electronic sensor PNP, M12 (DF-Y) white LED

9

PRODUCT REVISION
Assigned by UNIVER

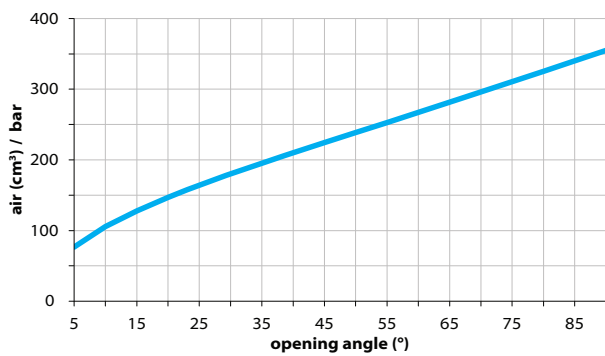
10

ATEX
X = ATEX option
See ATEX Catalogue for types and versions



*TOLERANCE BETWEEN DOWELS $\pm 0,02$ BETWEEN SCREW HOLES $\pm 0,1$
 **AREA TO ACCESS ANGLE ADJUSTMENT

Air Consumption per Cycle

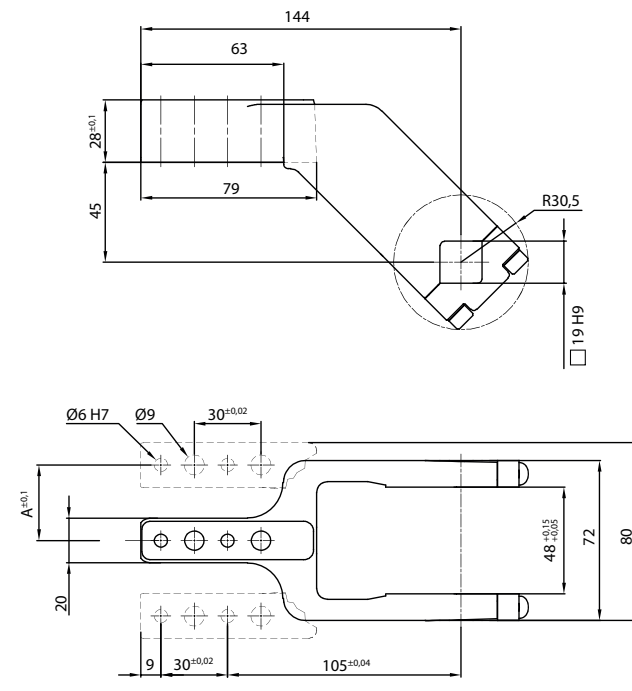
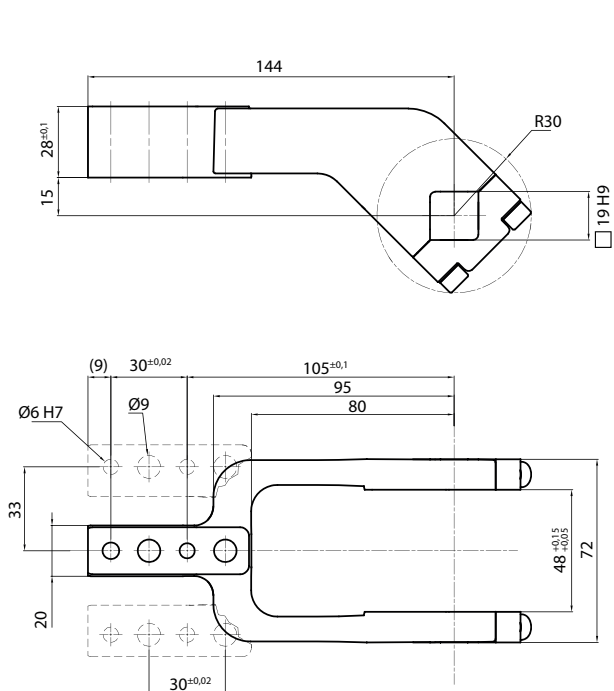


Clamping Arms

Arm Offset 15mm

Arm Offset 45mm

2



Armcode	Offset	Material	Arm style	Weight (Kg)	Opening angle	Opening angle
LKP00CL	15	ALUMINIUM	CENTRAL	0,4	0÷180°	0÷180°
LKP00DL	15	ALUMINIUM	RIGHT	0,4	0÷180°	0÷180°
LKP00SL	15	ALUMINIUM	LEFT	0,4	0÷180°	0÷180°
UP210151441G	15	STEEL	CENTRAL	0,8	0÷180°	0÷180°
UP210151442G	15	STEEL	RIGHT	0,8	0÷180°	0÷180°
UP210151443G	15	STEEL	LEFT	0,8	0÷180°	0÷180°
UKP5063E	45	ALUMINIUM	CENTRAL	4,5	0÷180°	-
UKP63F	45	ALUMINIUM	RIGHT	4,5	0÷180°	-
UKP63L	45	ALUMINIUM	LEFT	4,5	0÷180°	-
UKP5063ES	45	STEEL	CENTRAL	0,92	0÷180°	-
UKP63FS	45	STEEL	RIGHT	1,2	0÷180°	-
UKP63LS	45	STEEL	LEFT	1,2	0÷180°	-

Sensors



Electronic (optical)

- DF-K PNP M12
- DF-J NPN M12
- DF-Y PNP M12 White LED