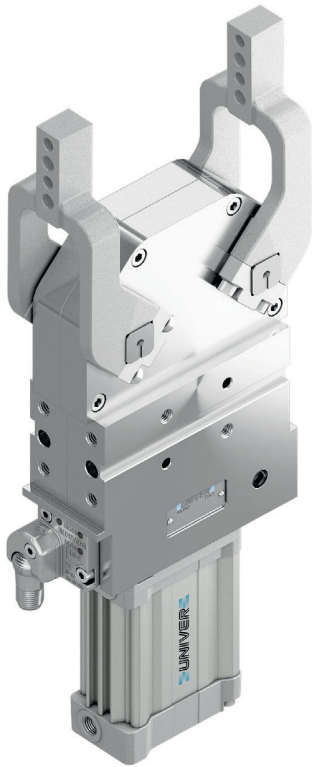


UCDP 40

Pneumatic power clamps Ø40 mm with double arm

Pneumatic power clamps size Ø40mm with double arm, compensation system, toggle-joint mechanism and stepless adjustable opening angle, typically used for holding and positioning metal sheets or workpieces.

- Lightweight aluminium construction
- Compact dimensions
- Integrated compensation system up to 3 mm
- Fully optical electronic sensor
- Fixing pattern on 4 sides
- Clamping arm in aluminium or steel



2

CHARACTERISTICS

Operating temperature	5° ÷ 45° C
Min./Max. Operating pressure	0,4 / 0,6 MPa
Opening angle*	0° ÷ 180°
Bore Ø	40 mm
Clamping moment (0,5 MPa)	55 Nm
Weight (clamping arm not included)	2,7 Kg
Pneumatic supply ports	G1/8 on both sides
Sensor	electronic (optical)
Supply voltage	10 ÷ 30 Vdc
IP code	IP65

*The opening angle range may vary according to the arm position and style.

CODIFICATION KEY

UC	D	P	40	D	A	A	K	0	
1	2	3	4	5	6	7	8	9	10



COMPENSATION



LIGHTWEIGHT



IRREVERSIBLE



ANGLE ADJUSTMENT



OPTICAL SENSOR



COMPACT

1 SERIES
UC = UNICLAMP Power clamps

2 STANDARD
D = With double arm

3 VERSION
P = Pneumatic

4 SIZE
40 = Ø 40 mm

5 ARM POSITION

D = Double arm



I = Double arm overturned (only 10mm offset)



N = No arm



6 ARM STYLE
A = Central, 10 mm offset
B = Right, 10 mm offset
G = Left, 10 mm offset
C = Central, 15 mm offset
D = Right, 15 mm offset
S = Left, 15 mm offset
E = Central, 45 mm offset
F = Right, 45 mm offset
L = Left, 45 mm offset
N = No arm
For other versions contact our Sales Dept.

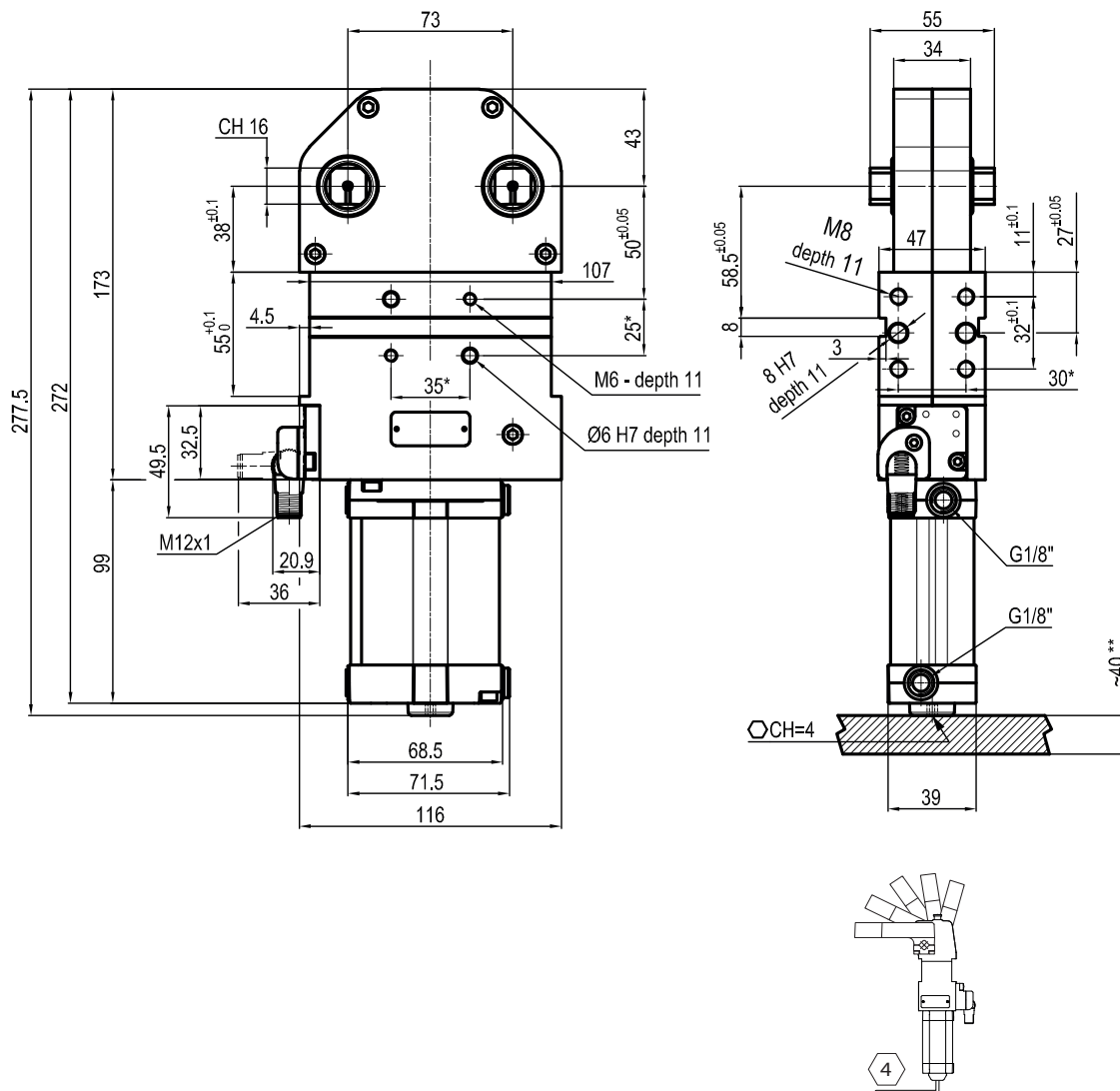
7 ARM TYPE
A = Aluminium
S = Steel
N = No arm

8 SENSOR
N = No sensor (with protection plate)
K = Electronic sensor PNP, M12 (DF-K)
J = Electronic sensor NPN, optical (DF-J)
Y = Electronic sensor PNP, M12 (DF-Y) white LED

9 PRODUCT REVISION
Assigned by UNIVER

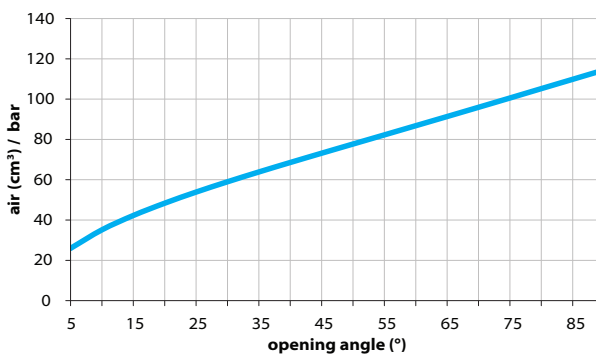
10 ATEX
X = ATEX option
See ATEX Catalogue for types and versions

2



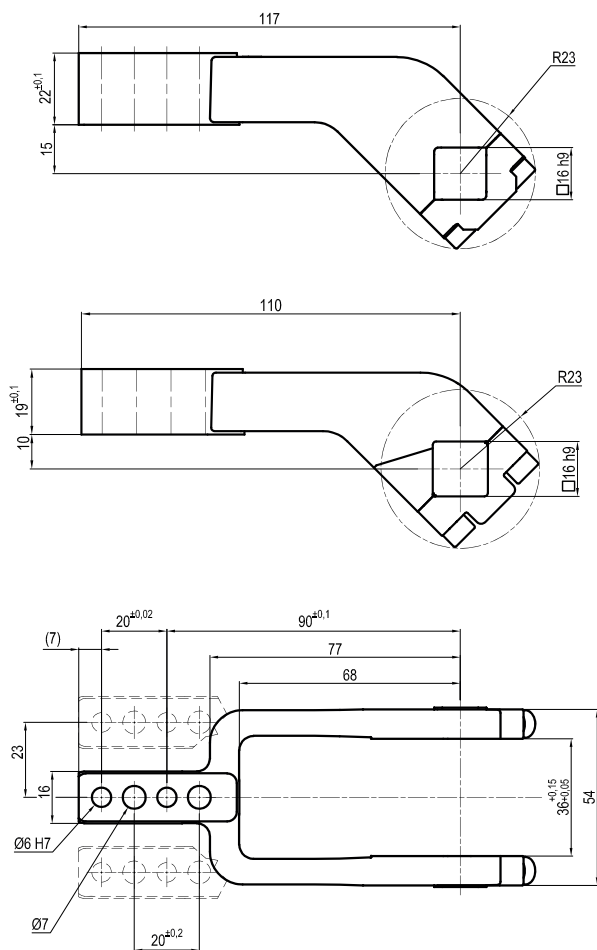
*TOLERANCE BETWEEN DOWELS ± 0,02 BETWEEN SCREW HOLES ± 0,1
 **AREA TO ACCESS ANGLE ADJUSTMENT

Air Consumption per Cycle

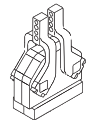
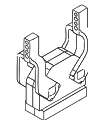
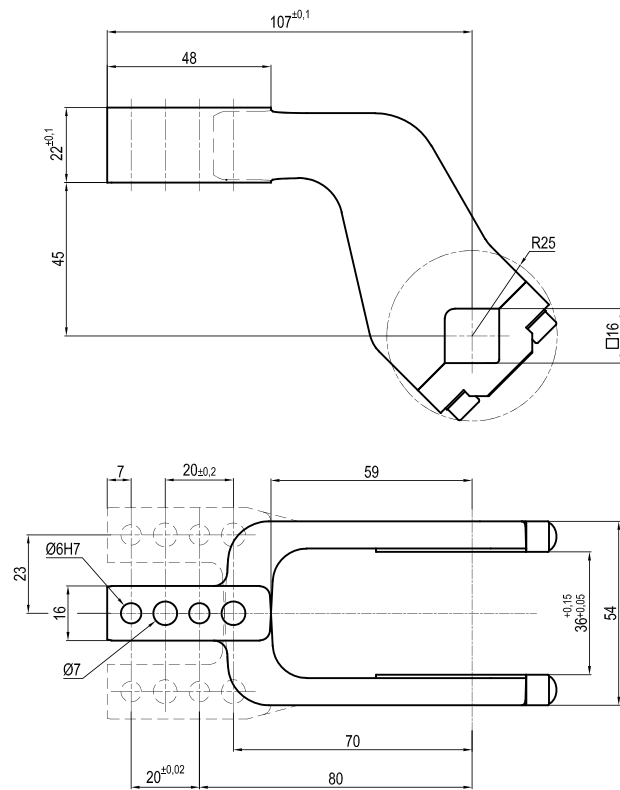


Clamping Arms

Arm Offset 10mm



Arm Offset 45mm



Armcode	Offset	Material	Arm style	Weight (Kg)	Opening angle	Opening angle
LKP40A	10	ALUMINIUM	CENTRAL	0,2	0÷180°	0÷180°
LKP40B	10	ALUMINIUM	RIGHT	0,2	0÷180°	0÷180°
LKP40G	10	ALUMINIUM	LEFT	0,2	0÷180°	0÷180°
LKP01CST	15	ALUMINIUM	CENTRAL	0,2	0÷180°	-
LKP01DST	15	ALUMINIUM	RIGHT	0,2	0÷180°	-
LKP01SST	15	ALUMINIUM	LEFT	0,2	0÷180°	-
IKP40E	45	ALUMINIUM	CENTRAL	0,3	0÷140°	-
IKP40F	45	ALUMINIUM	RIGHT	0,3	0÷140°	-
IKP40L	45	ALUMINIUM	LEFT	0,3	0÷140°	-

Sensors



Electronic (optical)

DF-K PNP M12

DF-J NPN M12

DF-Y PNP M12 White LED