

UCBP 80

Pneumatic power clamps Ø80 mm

Pneumatic power clamps with compensation system, toggle-joint mechanism and stepless adjustable opening angle, typically used for handling and holding metal sheets in welding applications

- Lightweight aluminium construction
- Integrated compensation system up to 2,9 mm
- Version with manual hand lever available
- Fully optical electronic sensor or pneumatic sensor
- Fixing pattern on 4 sides
- Manual unlocking in case of air loss
- Self-holding system for open position available
- Clamping arm in aluminium or steel



CHARACTERISTICS

Operating temperature	5° ÷ 45° C
Min./Max. Operating pressure	0,4 / 0,6 MPa
Opening angle*	0° ÷ 135°
Bore Ø	80 mm
Holding moment	4000 Nm
Clamping moment (0,5 MPa)	1100 Nm
Weight (clamping arm not included)	8,6 Kg
Pneumatic supply ports	G1/4 on both sides
Sensor	electronic (optical)
Supply voltage	10 ÷ 30 Vdc
IP code	IP65

*The opening angle range may vary according to the arm position and style.

CODIFICATION KEY

UC	B	P	80	O	E	A	K	0	
1	2	3	4	5	6	7	8	9	10



COMPENSATION



LIGHTWEIGHT



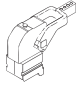


IRREVERSIBLE



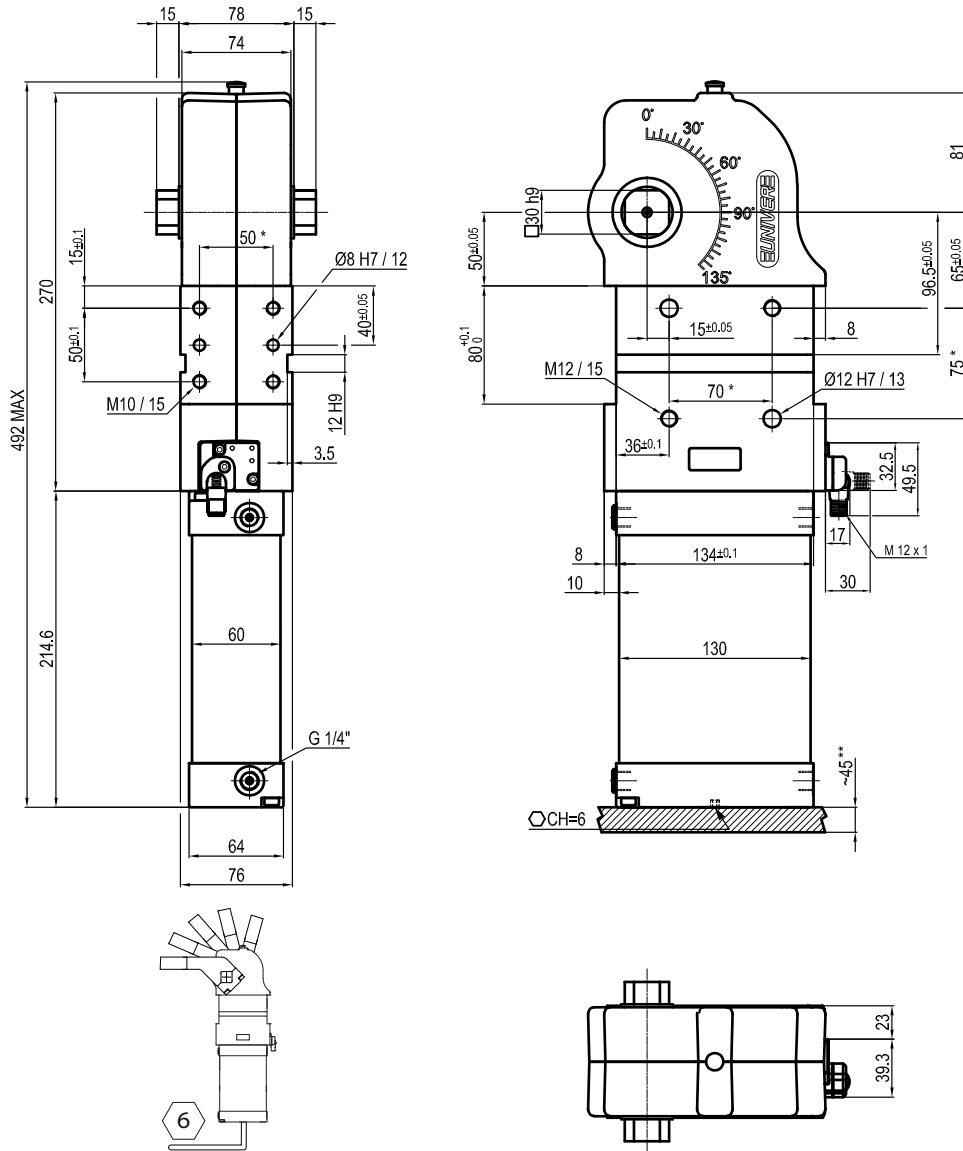
ANGLE ADJUSTMENT



OPTICAL SENSOR

1	SERIES UC = UNICLAMP Power clamps	6	ARM STYLE C = Central, 20 mm offset D = Right, 20 mm offset S = Left, 20 mm offset E = Central, 45 mm offset F = Right, 45 mm offset L = Left, 45 mm offset N = No arm For other versions contact our Sales Dept.
2	STANDARD B = European standard	7	ARM TYPE A = Aluminium S = Steel N = No arm
3	VERSION P = Pneumatic	8	SENSOR N = No sensor (with protection plate) K = Electronic sensor PNP, M12 (DF-K) D = Pneumatic sensor (DF-UPNW80) J = Electronic sensor NPN, optical (DF-J) Y = Electronic sensor PNP, M12 (DF-Y) white LED
4	SIZE 80 = Ø80 mm	9	PRODUCT REVISION Assigned by UNIVER
5	ARM POSITION V = 90°  O = 180°  N = No arm 	10	ATEX X = ATEX option See ATEX Catalogue for types and versions

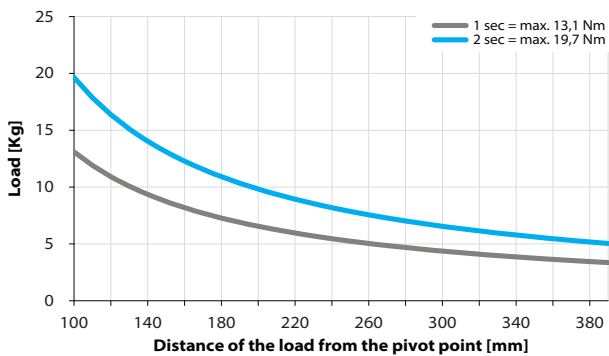
2



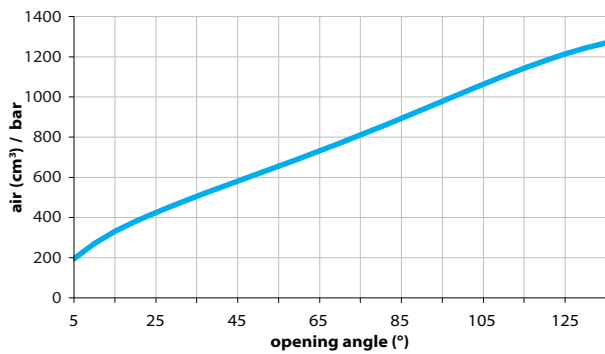
* TOLERANCE BETWEEN DOWELS ± 0,02, BETWEEN SCREW HOLES ± 0,1
 ** AREA TO ACCESS ANGLE ADJUSTMENT

Maximum Applicable Load

Pressure: 5 bar - 90° cycle time (Open - Close)

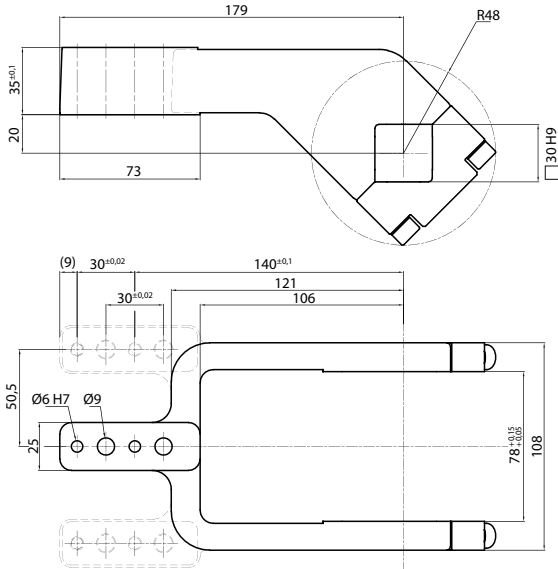


Air Consumption per Cycle

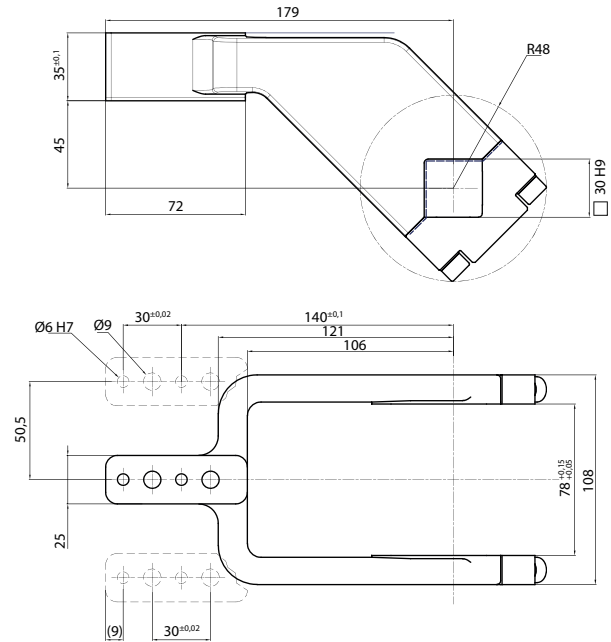


Clamping Arms

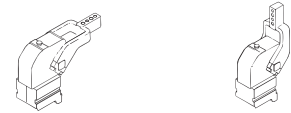
Arm Offset 20mm



Arm Offset 45mm



2



Armcode	Offset	Material	Arm style	Weight (Kg)	Opening angle (90°)	Opening angle (180°)
LKP80C	20	ALUMINIUM	CENTRAL	0,6	0÷135°	0÷105°
LKP80D	20	ALUMINIUM	RIGHT	0,6	0÷135°	0÷105°
LKP80S	20	ALUMINIUM	LEFT	0,6	0÷135°	0÷105°
UKP80CS	20	STEEL	CENTRAL	2,3	0÷135°	0÷105°
UKP80DS	20	STEEL	RIGHT	2,3	0÷135°	0÷105°
UKP80SS	20	STEEL	LEFT	2,3	0÷135°	0÷105°
UKP80E	45	ALUMINIUM	CENTRAL	0,6	0÷135°	0÷125°
UKP80F	45	ALUMINIUM	RIGHT	0,6	0÷135°	0÷125°
UKP80L	45	ALUMINIUM	LEFT	0,6	0÷135°	0÷125°
UKP80ES	45	STEEL	CENTRAL	2,2	0÷135°	0÷125°
UKP80FS	45	STEEL	RIGHT	2,2	0÷135°	0÷125°
UKP80LS	45	STEEL	LEFT	2,2	0÷135°	0÷125°

Sensors



Electronic (optical)

DF-K PNP M12
DF-J NPN M12
DF-Y PNP M12 White LED



Pneumatic

DF-UPNW80

Accessories



Self holding system

UBK46P30