

# UCBP 50

Pneumatic power clamps Ø50 mm

Pneumatic power clamps with compensation system, toggle-joint mechanism and stepless adjustable opening angle, typically used for handling and holding metal sheets in welding applications

- Lightweight aluminium construction
- Compact dimensions
- Integrated compensation system up to 1,7 mm
- Version with hand lever available
- Fully optical electronic sensor or pneumatic sensor
- Fixing pattern on 4 sides
- Manual unlocking in case of air loss
- Self-holding system for open position available
- Clamping arm in aluminium or steel

## CHARACTERISTICS

Operating temperature	5° ÷ 45° C
Min./Max. Operating pressure	0,4 / 0,6 MPa
Opening angle*	0° ÷ 135°
Bore Ø	50 mm
Holding moment	1250 Nm
Clamping moment (0,5 MPa)	280 Nm
Weight (clamping arm not included)	2,5 Kg
Pneumatic supply ports	G1/4 on both sides
Sensor	electronic (optical)
Supply voltage	10 ÷ 30 Vdc
IP code	IP65

\*The opening angle range may vary according to the arm position and style.

## CODIFICATION KEY

UC	B	P	50	O	E	A	K	0	
1	2	3	4	5	6	7	8	9	10



COMPENSATION



LIGHTWEIGHT



IRREVERSIBLE



ANGLE ADJUSTMENT



OPTICAL SENSOR



COMPACT

**1** SERIES  
UC = UNICLAMP Power clamps

**2** STANDARD  
B = European standard

**3** VERSION  
P = Pneumatic

**4** SIZE  
50 = Ø 50 mm

**5** ARM POSITION

V = 90°



O = 180°



N = No arm



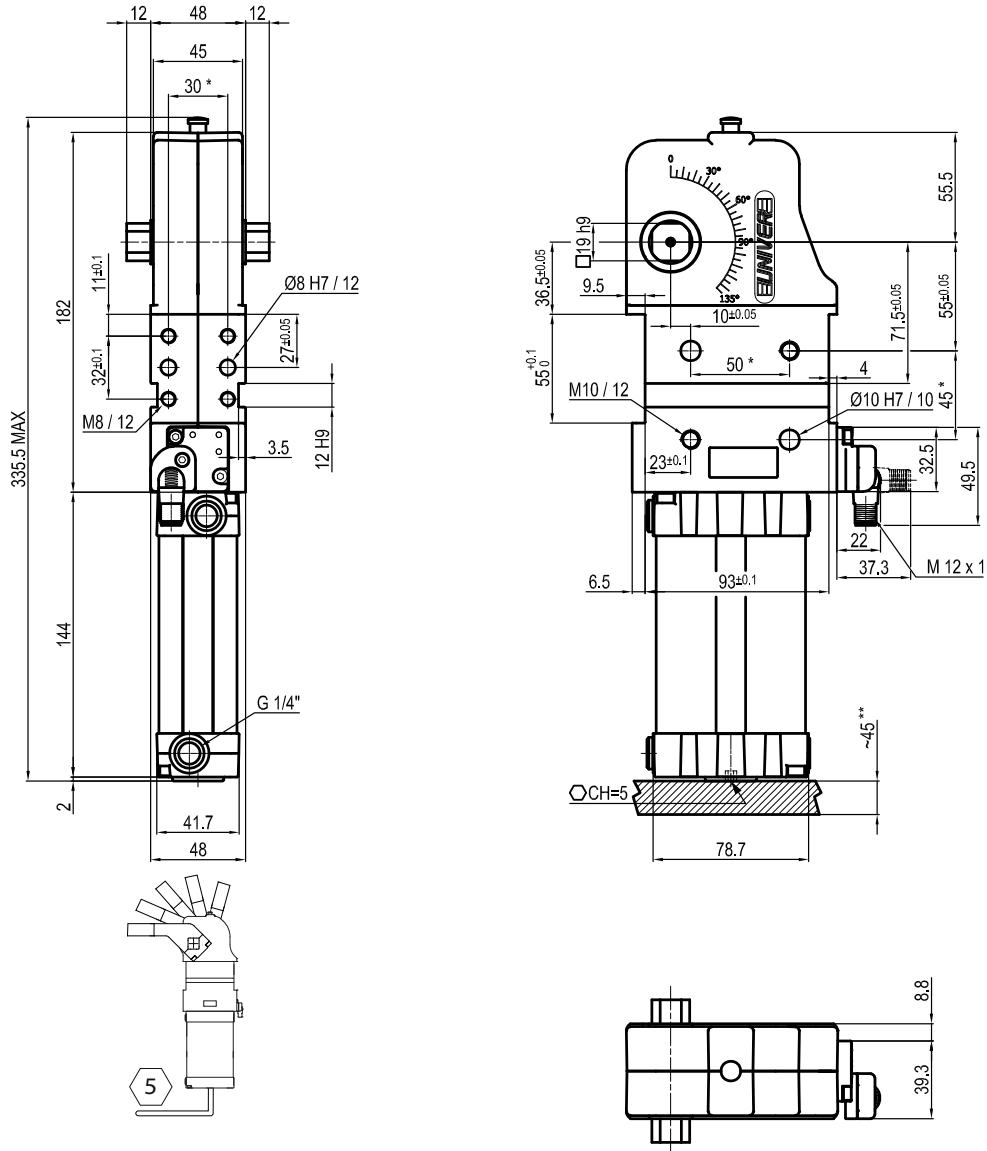
**6** ARM STYLE  
C = Central, 15 mm offset  
D = Right, 15 mm offset  
S = Left, 15 mm offset  
E = Central, 45 mm offset  
F = Right, 45 mm offset  
L = Left, 45 mm offset  
N = No arm  
For other versions contact our Sales Dept.

**7** ARM TYPE  
A = Aluminium  
S = Steel  
N = No arm

**8** SENSOR  
N = No sensor (with protection plate)  
K = Electronic sensor PNP, M12 (DF-K)  
D = Pneumatic sensor (DF-UPNW)  
J = Electronic sensor NPN, optical (DF-J)  
Y = Electronic sensor PNP, M12 (DF-Y) white LED

**9** PRODUCT REVISION  
Assigned by UNIVER

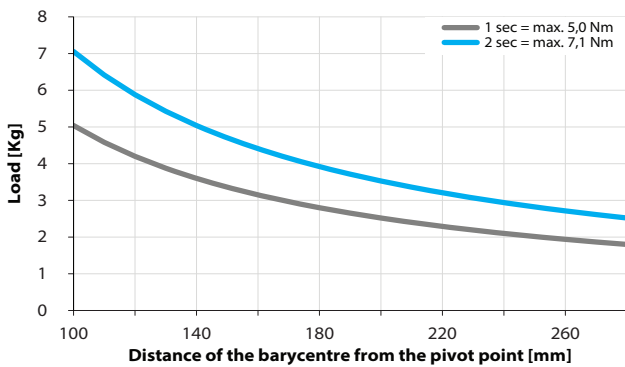
**10** ATEX  
X = ATEX option  
See ATEX Catalogue for types and versions



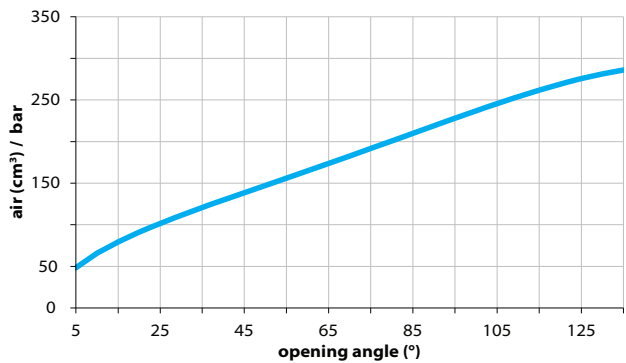
\*TOLERANCE BETWEEN DOWELS ± 0,02 BETWEEN SCREW HOLES ± 0,1  
 \*\*AREA TO ACCESS ANGLE ADJUSTMENT

### Maximum Applicable Load

Pressure: 5 bar - 90° cycle time (Open - Close)



### Air Consumption per Cycle

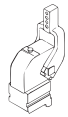
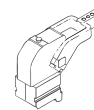
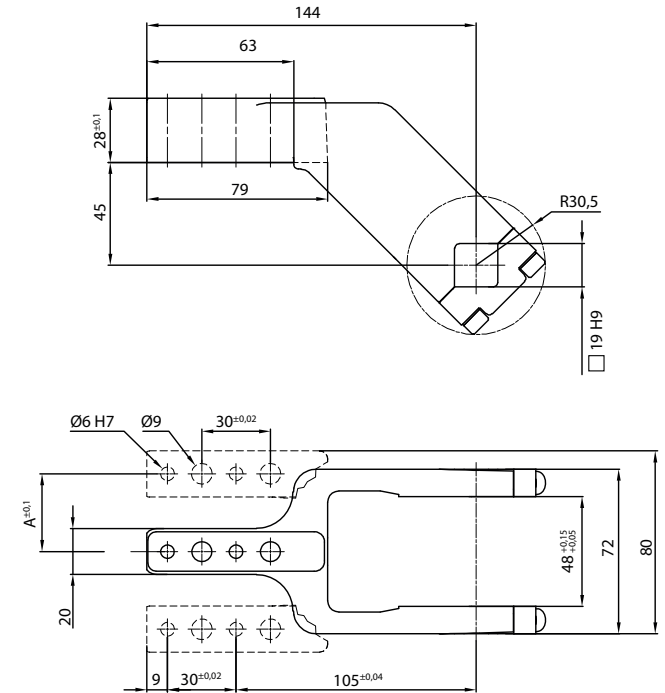
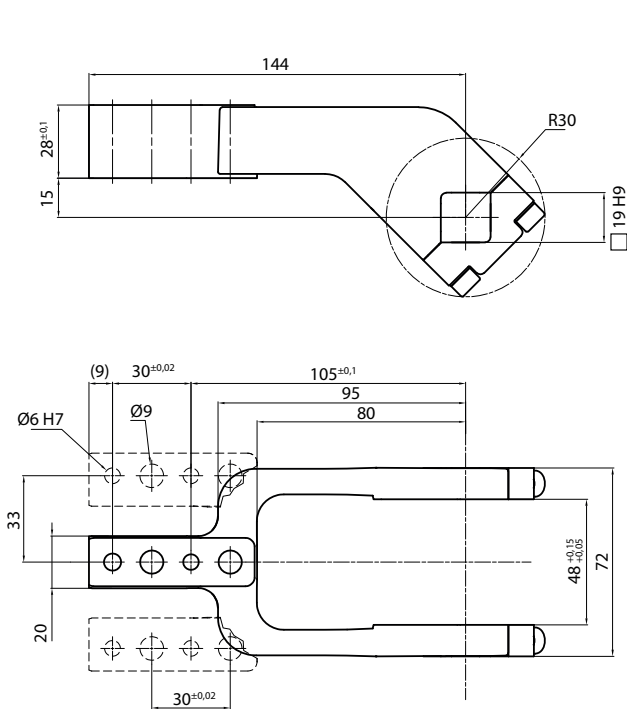


## Clamping Arms

### Arm Offset 15mm

### Arm Offset 45mm

2



Armcode	Offset	Material	Arm style	Weight (Kg)	Opening angle (90°)	Opening angle (180°)
LKP00CL	15	ALUMINIUM	CENTRAL	0,4	0±135°	0±105°
LKP00DL	15	ALUMINIUM	RIGHT	0,4	0±135°	0±105°
LKP00SL	15	ALUMINIUM	LEFT	0,4	0±135°	0±105°
UP210151441G	15	STEEL	CENTRAL	0,8	0±135°	0±105°
UP210151442G	15	STEEL	RIGHT	0,8	0±135°	0±105°
UP210151443G	15	STEEL	LEFT	0,8	0±135°	0±105°
UKP5063E	45	ALUMINIUM	CENTRAL	0,45	0±135°	0±135°
UKP50F	45	ALUMINIUM	RIGHT	0,45	0±135°	0±135°
UKP50L	45	ALUMINIUM	LEFT	0,45	0±135°	0±135°
UKP5063ES	45	STEEL	CENTRAL	1,16	0±135°	0±135°
UKP50FS	45	STEEL	RIGHT	1,16	0±135°	0±135°
UKP50LS	45	STEEL	LEFT	1,16	0±135°	0±135°

## Sensors

## Accessories



Electronic (optical)

Pneumatic

Self holding system

DF-K PNP M12  
DF-J NPN M12  
DF-Y PNP M12 White LED

DF-UPNW

UBK46P19