

# UCBP 25

Pneumatic power clamps Ø25 mm

Pneumatic Miniclamps with compensation system, toggle-joint mechanism and stepless adjustable opening angle, typically used for handling and blocking pieces in assembly process.

- Compact dimensions and lightweight
- Integrated compensation up to 0,9 mm
- Version with hand lever available
- Fully optical electronic sensor or pneumatic sensor
- Fixing pattern on 2 sides (front and back)
- Manual unlocking in case of air loss
- Wishbone clamping arm in aluminium



## CHARACTERISTICS

Operating temperature	5° ÷ 45° C
Min./Max. Operating pressure	0,4 / 0,6 MPa
Opening angle*	0° ÷ 105°
Bore Ø	25 mm
Holding moment	75 Nm
Clamping moment (0,5 MPa)	25 Nm
Weight (clamping arm not included)	0,8 Kg
Pneumatic supply ports	M5
Sensor	electronic (optical)
Supply voltage	10 ÷ 30 Vdc
IP code	IP65

\*The opening angle range may vary according to the arm position and style.

## CODIFICATION KEY

UC | B | P | 25 | O | B | A | K | 0 | 10



COMPENSATION



LIGHTWEIGHT



IRREVERSIBLE



ANGLE ADJUSTMENT



OPTICAL SENSOR

1 SERIES  
UC = UNICLAMP Power clamps

2 STANDARD  
B = European standard

3 VERSION  
P = Pneumatic

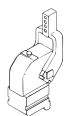
4 SIZE  
25 = Ø 25mm

5 ARM POSITION

V = 90°



O = 180°



N = No arm



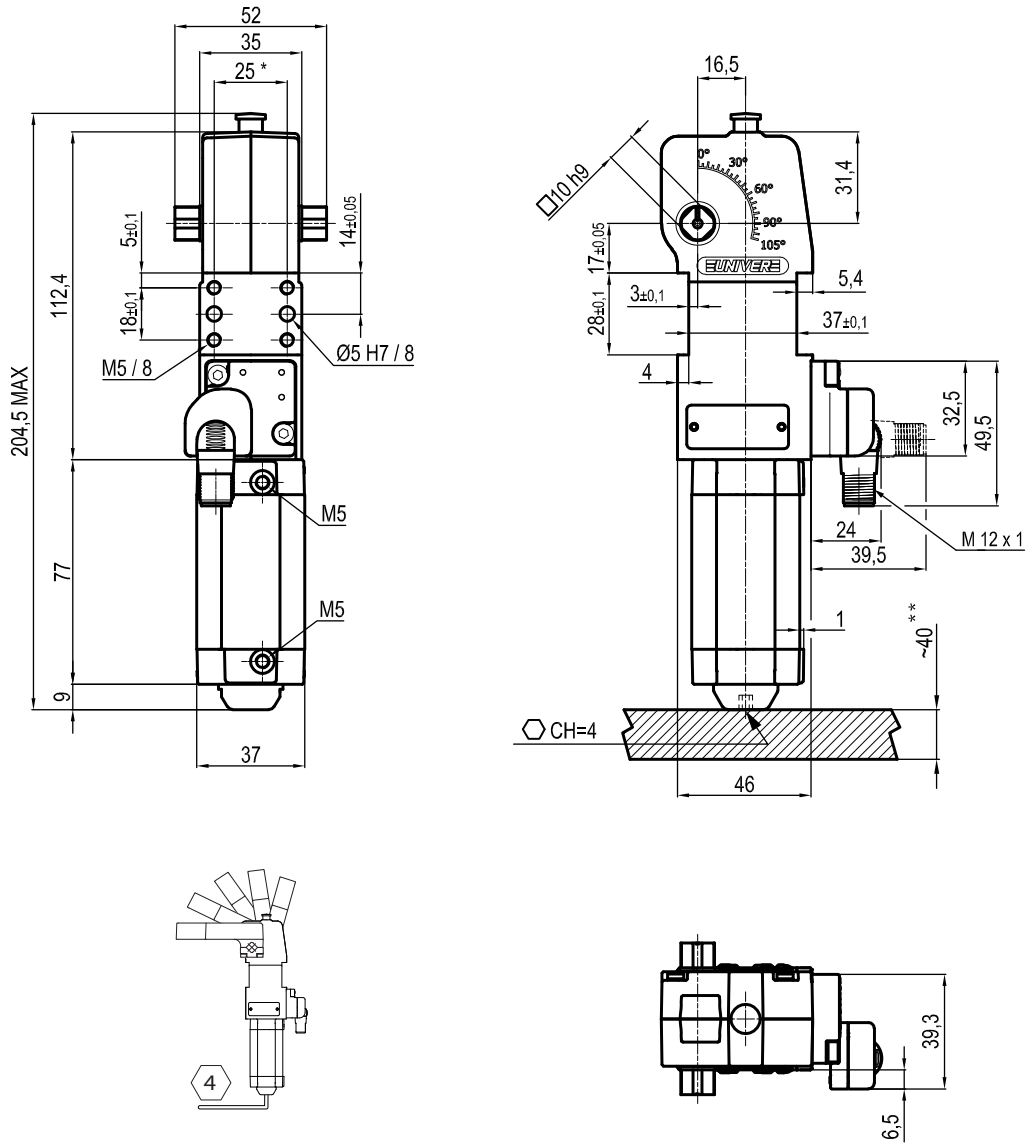
6 ARM STYLE  
B = Central, 0mm offset  
C = Central, 10mm offset  
N = No arm  
For other versions contact our Sales Dept.

7 ARM TYPE  
A = Aluminium  
N = No arm

8 SENSOR  
N = No sensor (with protection plate)  
K = Electronic sensor PNP, M12 (DF-K)  
D = Pneumatic sensor (DF-UPNWS)  
Y = Electronic sensor PNP, M12 (DF-Y) white LED  
J = Electronic sensor NPN, M12 (DF-J)

9 PRODUCT REVISION  
Assigned by UNIVER

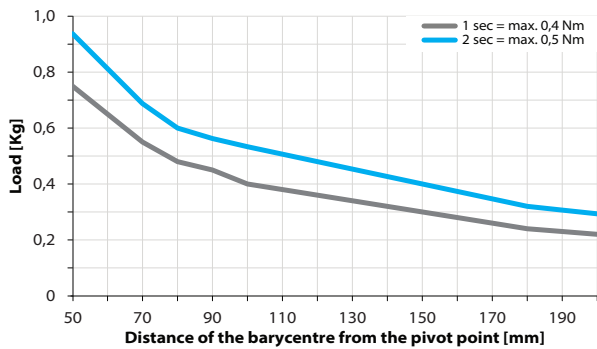
10 ATEX  
X = ATEX option  
See ATEX Catalogue for types and versions



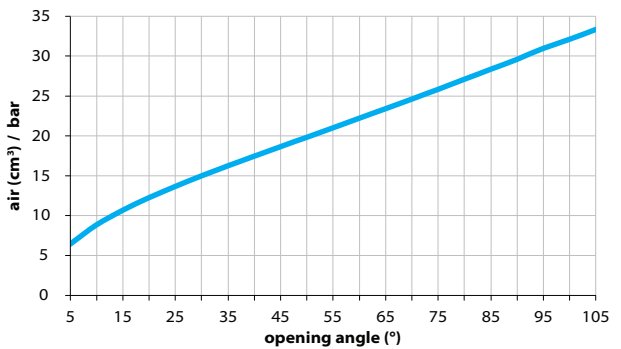
\*TOLERANCE BETWEEN DOWELS  $\pm 0,02$  BETWEEN SCREW HOLES  $\pm 0,1$   
 \*\*AREA TO ACCESS ANGLE ADJUSTMENT

### Maximum Applicable Load

Pressure: 5 bar - 90° cycle time (Open - Close)



### Air Consumption per Cycle

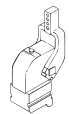
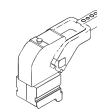
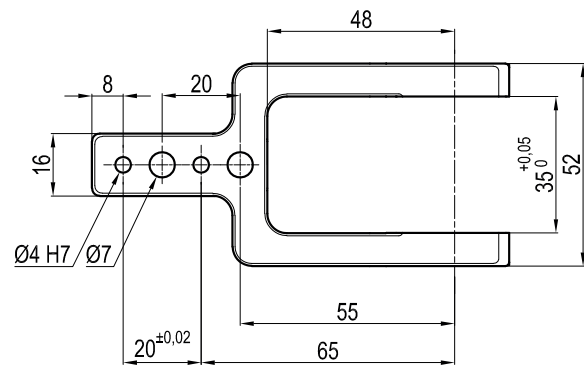
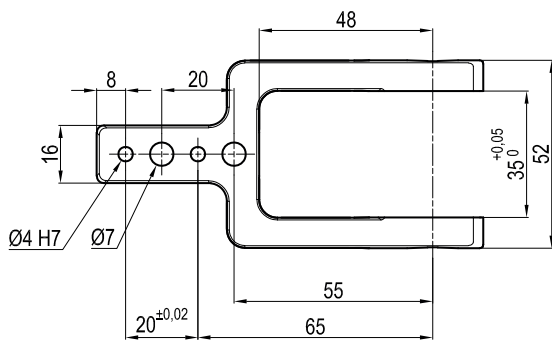
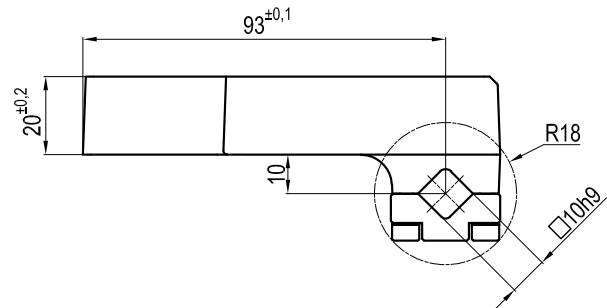
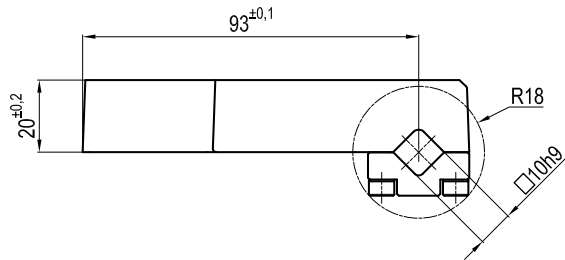


## Clamping Arms

### Arm Offset 0mm

### Arm Offset 10mm

1



Armcode	Offset	Material	Arm style	Weight (Kg)	Opening angle (90°)	Opening angle (180°)
LKP25B	0	ALUMINIUM	CENTRAL	0,13	0±105°	0±105°
LKP25C	10	ALUMINIUM	CENTRAL	0,15	0±105°	0±105°

## Sensors



Electronic (optical)

Pneumatic

DF-K PNP M12  
DF-J NPN M12  
DF-Y PNP M12 White LED

DF-UPNWS