

UCBM 32

Pneumatic power clamps Ø32 mm with hand lever

Pneumatic Miniclamps with compensation system, toggle-joint mechanism and stepless adjustable opening angle, typically used for handling and blocking pieces in assembly process.

- Compact dimensions and lightweight
- Integrated compensation up to 1,3 mm
- Hand lever mount on both sides
- Fully optical electronic sensor or pneumatic sensor
- Fixing pattern on 4 sides
- Manual unlocking in case of air loss
- Self holding system for open position available
- Wishbone clamping arm in aluminium



1

CHARACTERISTICS

Operating temperature	5° ÷ 45° C
Min./Max. Operating pressure	0,4 / 0,6 MPa
Opening angle*	0° ÷ 105°
Bore Ø	32 mm
Holding moment	250 Nm
Clamping moment (0,5 MPa)	75 Nm
Weight (clamping arm not included)	1,4 Kg
Pneumatic supply ports	G1/8
Sensor	electronic (optical)
Supply voltage	10 ÷ 30 Vdc
IP code	IP65

*The opening angle range may vary according to the arm position and style.

CODIFICATION KEY

UC | B | M | 32 | O | E | A | K | 0 | 10



COMPENSATION



LIGHTWEIGHT



IRREVERSIBLE



ANGLE ADJUSTMENT



OPTICAL SENSOR

1 SERIES
UC = UNICLAMP Power clamps

2 STANDARD
B = European standard

3 VERSION
M = Pneumatic with hand lever

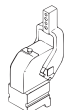
4 SIZE
32 = Ø 32mm

5 ARM POSITION

V = 90°



O = 180°



N = No arm



6 ARM STYLE
B = Central, 0mm offset
C = Central, 10mm offset
E = Central, 25mm offset
N = No arm
For other versions contact our Sales Dept.

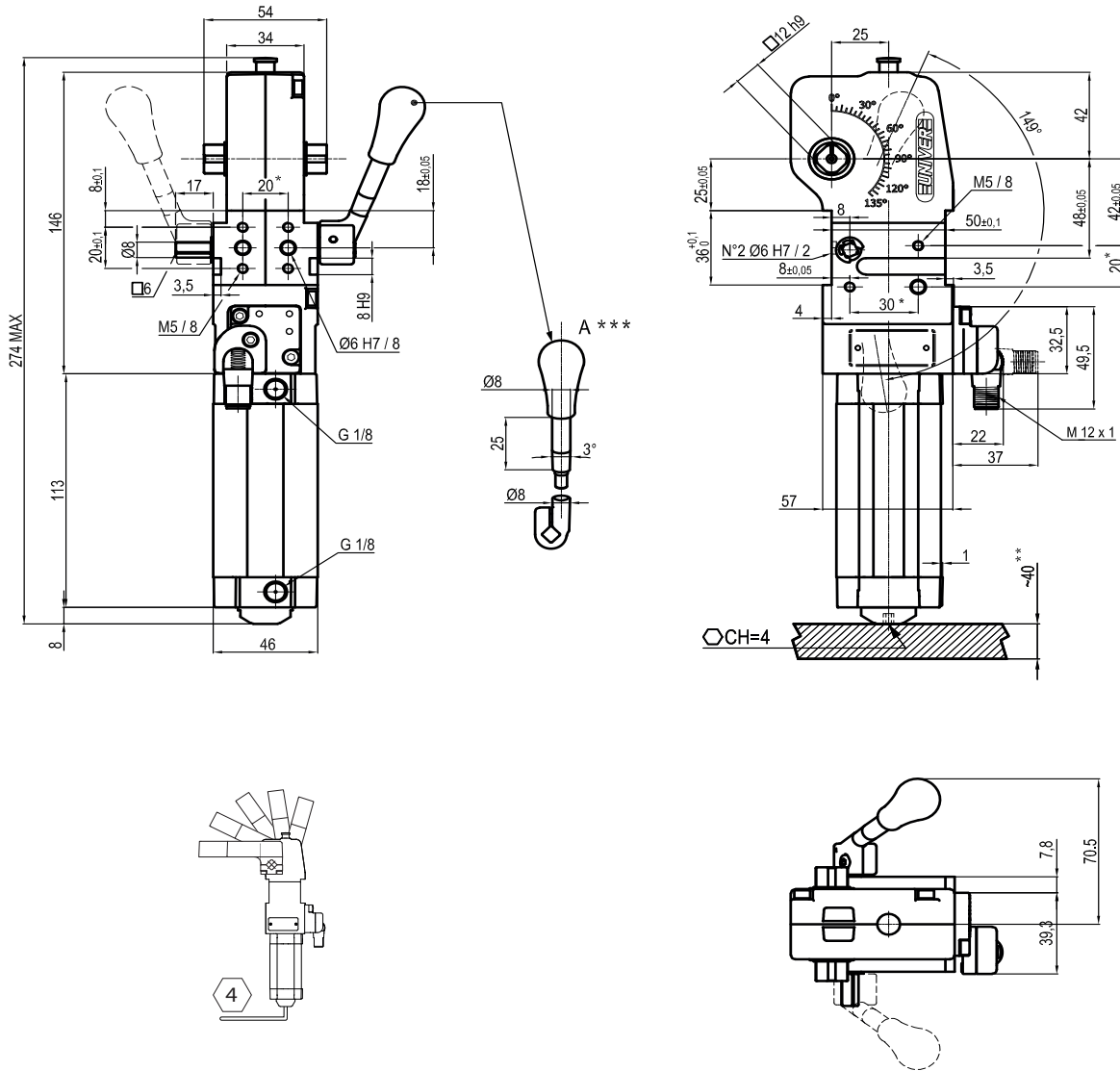
7 ARM TYPE
A = Aluminium
N = No arm

8 SENSOR
N = No sensor (with protection plate)
K = Electronic sensor PNP, M12 (DF-K)
D = Pneumatic sensor
Y = Electronic sensor PNP, M12 (DF-Y) white LED
J = Electronic sensor NPN, M12 (DF-J)

9 PRODUCT REVISION
Assigned by UNIVER

10 ATEX
X = ATEX option
See ATEX Catalogue for types and versions

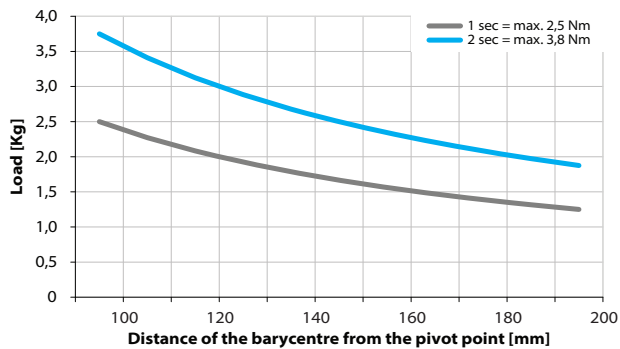
1



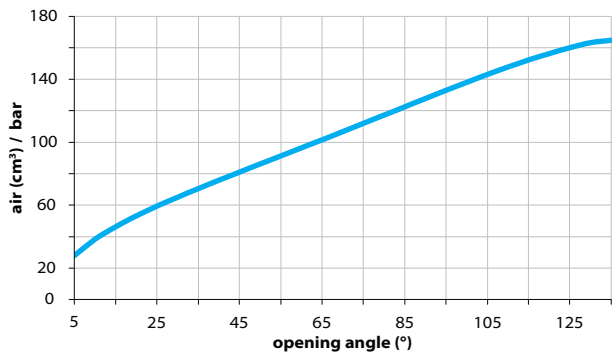
* TOLERANCE BETWEEN DOWELS $\pm 0,02$, BETWEEN SCREW HOLES $\pm 0,1$
 ** AREA TO ACCESS ANGLE ADJUSTMENT
 *** DIMENSIONS TO BE RESPECTED IN CASE OF OTHER MANUAL LEVERS ARE USED

Maximum Applicable Load

Pressure: 5 bar - 90° cycle time (Open - Close)

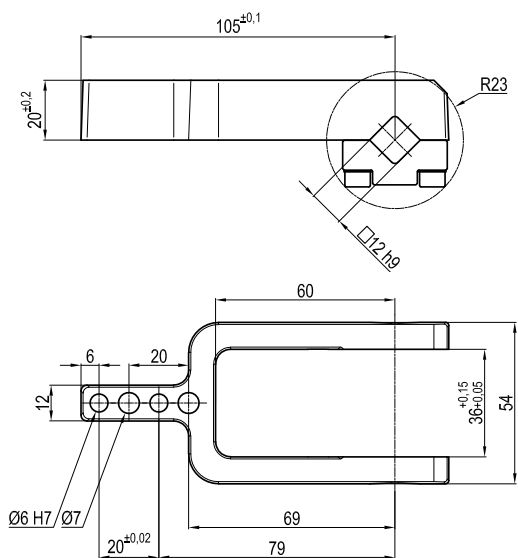


Air Consumption per Cycle

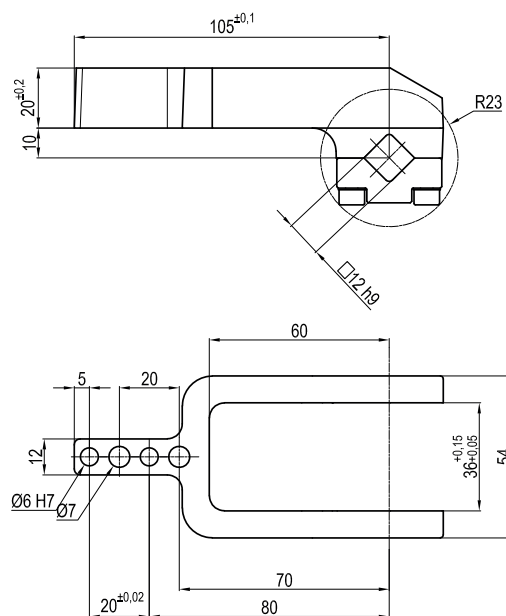


Clamping Arms

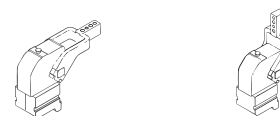
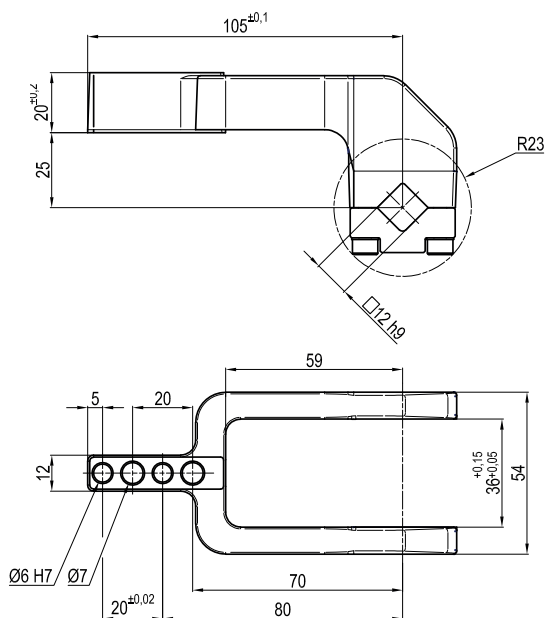
Arm Offset 0mm



Arm Offset 10mm



Arm Offset 25mm



Armcode	Offset	Material	Arm style	Weight (Kg)	Opening angle (90°)	Opening angle (180°)
LKP32B	0	ALUMINIUM	CENTRAL	0,15	0±105°	0±105°
LKP32C	10	ALUMINIUM	CENTRAL	0,15	0±105°	0±105°
LKP32E	25	ALUMINIUM	CENTRAL	0,15	0±105°	0±105°

Sensors



Electronic (optical)

DF-K PNP M12
DF-J NPN M12
DF-Y PNP M12 White LED

Accessories



Handlever

UBF252532



Self holding system

UBK46P12