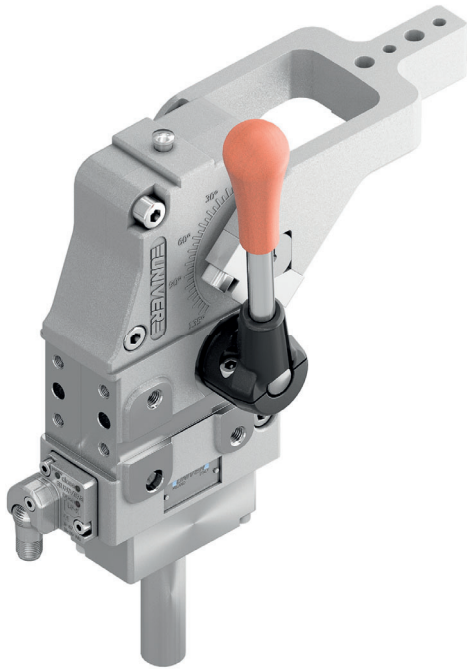


# UCBL 463

Manual power clamps Ø63 mm

Manual power clamps size Ø63 mm with compensation system, toggle-joint mechanism and stepless adjustable opening angle, typically used for handling and holding metal sheets in welding applications

- Lightweight aluminium construction
- Integrated compensation system up to 2,7 mm
- Hand lever mount on both sides
- Fully optical electronic sensor or pneumatic sensor
- Fixing pattern on 4 sides
- Manual unlocking
- Self-holding system for open position available
- Clamping arm in aluminium or steel



2

## CHARACTERISTICS

Operating temperature	5° ÷ 45° C
Opening angle*	0° ÷ 135°
Bore Ø	63 mm
Holding moment	1750 Nm
Clamping moment (0,5 MPa)	420 Nm
Weight (clamping arm not included)	2,95 Kg
Sensor	electronic (optical)
Supply voltage	10 ÷ 30 Vdc
IP code	IP65

\*The opening angle range may vary according to the arm position and style.

## CODIFICATION KEY

UC	B	L	4	63	V	E	A	K	0	
1	2	3	4	5	6	7	8	9	10	11



COMPENSATION



LIGHTWEIGHT



IRREVERSIBLE



ANGLE ADJUSTMENT



OPTICAL SENSOR

1

**SERIES**

UC = UNICLAMP Power clamps

2

**STANDARD**

B = European standard

3

**VERSION**

L = Manual power clamp with hand lever

4

**FIXING**

4 = On 4 sides

5

**SIZE**

63 = Ø 63 mm

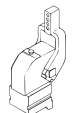
6

**ARM POSITION**

V = 90°



O = 180°



N = No arm



7

**ARM STYLE**

C = Central, 15 mm offset

D = Right, 15 mm offset

S = Left, 15 mm offset

E = Central, 45 mm offset

F = Right, 45 mm offset

L = Left, 45 mm offset

N = No arm

For other versions contact our Sales Dept.

8

**ARM TYPE**

A = Aluminium

S = Steel

N = No arm

9

**SENSOR**

N = No sensor (with protection plate)

K = Electronic sensor PNP, M12 (DF-K)

D = Pneumatic sensor (DF-UPNW)

J = Electronic sensor NPN, optical (DF-J)

Y = Electronic sensor PNP, M12 (DF-Y) white LED

10

**PRODUCT REVISION**

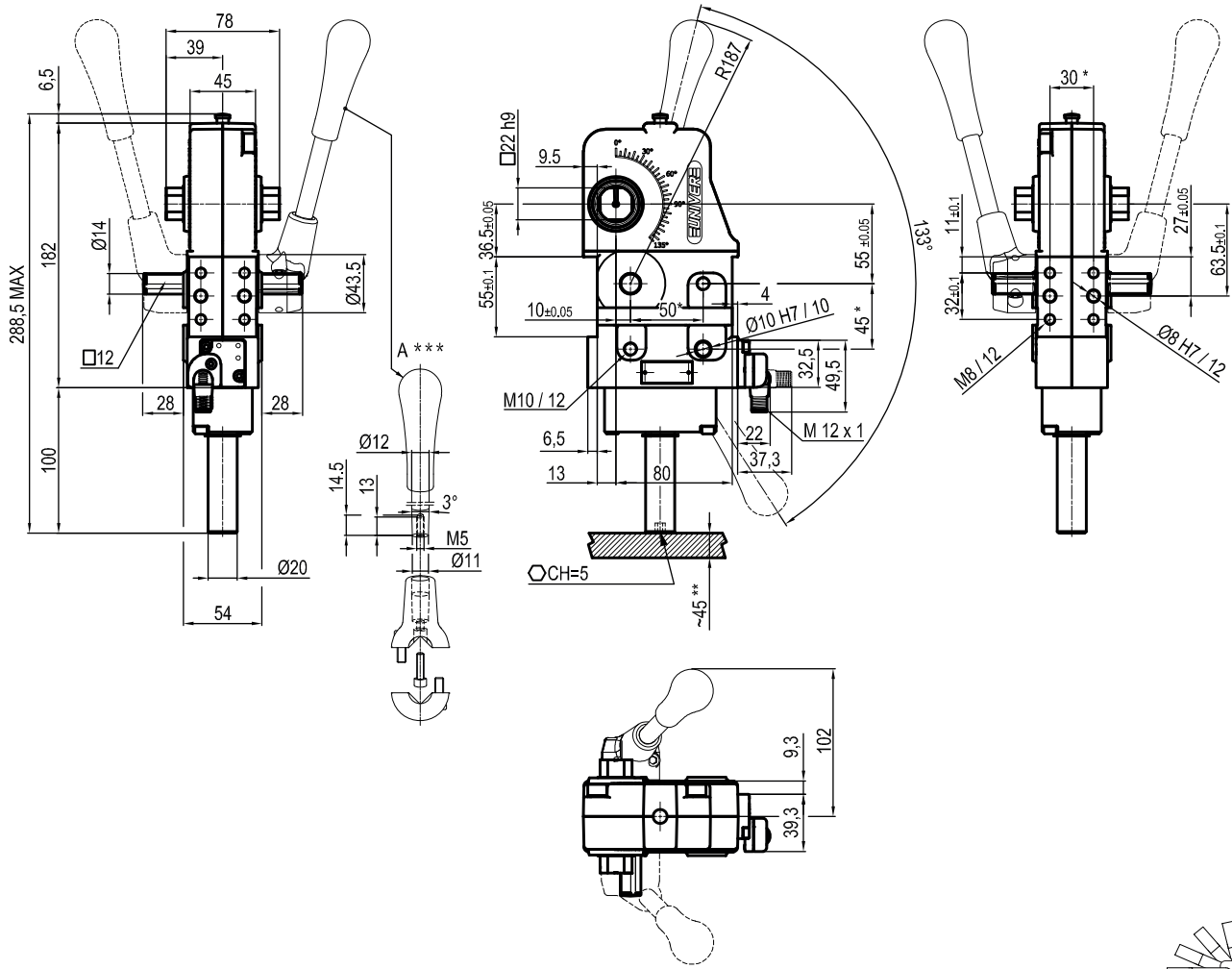
Assigned by UNIVER

11

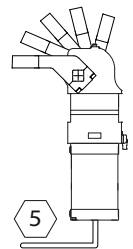
**ATEX**

X = ATEX option

See ATEX Catalogue for types and versions

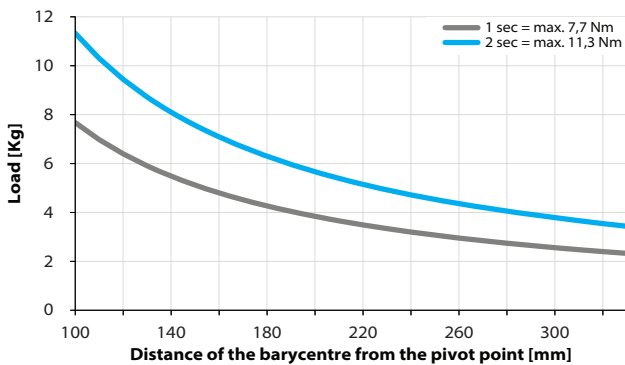


\*TOLERANCE BETWEEN DOWELS ± 0,02 BETWEEN SCREW HOLES ± 0,1  
 \*\*AREA TO ACCESS ANGLE ADJUSTMENT  
 \*\*\*DIMENSIONS TO BE RESPECTED IN CASE OTHER MANUAL LEVERS ARE USED



### Maximum Applicable Load

Pressure: 5 bar - 90° cycle time (Open - Close)

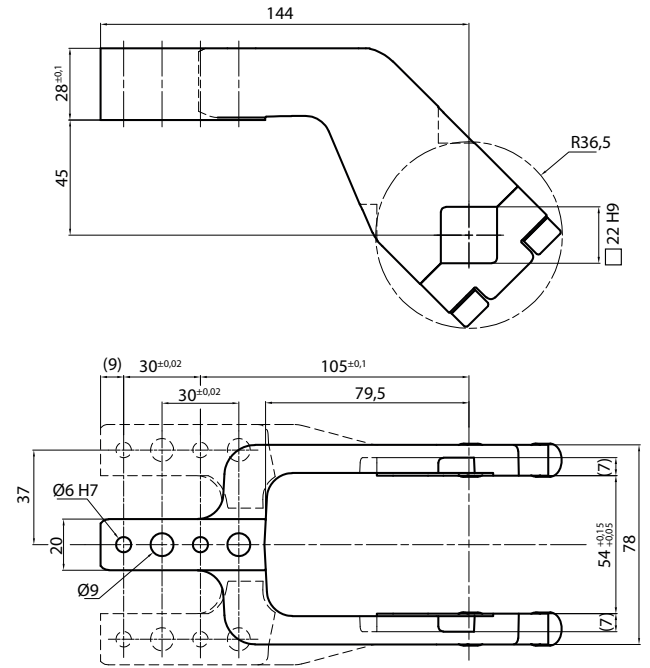
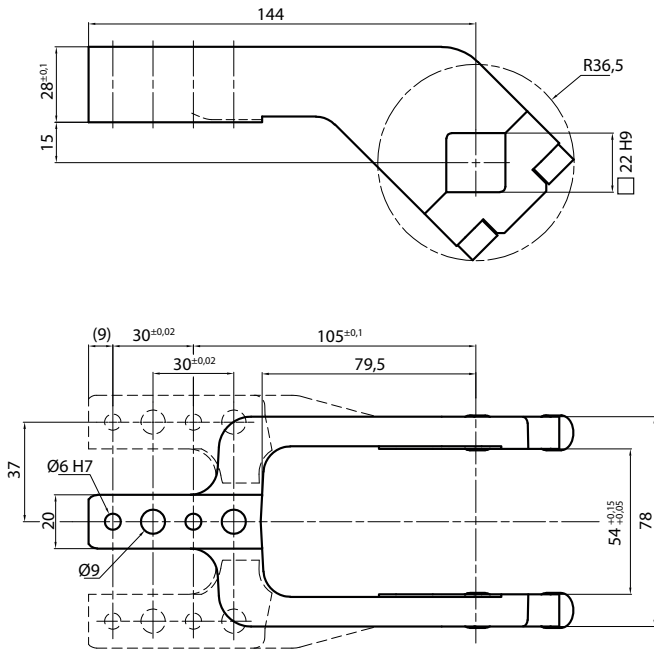


## Clamping Arms

### Arm Offset 15mm

### Arm Offset 45mm

2



Armcode	Offset	Material	Arm style	Weight (Kg)	Opening angle (90°)	Opening angle (180°)
UP310151441A	15	ALUMINIUM	CENTRAL	0,3	0÷135°	0÷110°
UP310151442A	15	ALUMINIUM	RIGHT	0,3	0÷135°	0÷110°
UP310151443A	15	ALUMINIUM	LEFT	0,3	0÷135°	0÷110°
UP310151441G	15	STEEL	CENTRAL	1,2	0÷135°	0÷110°
UP310151442G	15	STEEL	RIGHT	1,2	0÷135°	0÷110°
UP310151443G	15	STEEL	LEFT	1,2	0÷135°	0÷110°
UP310451441A	45	ALUMINIUM	CENTRAL	0,3	0÷135°	0÷135°
UP310451442A	45	ALUMINIUM	RIGHT	0,3	0÷135°	0÷135°
UP310451443A	45	ALUMINIUM	LEFT	0,3	0÷135°	0÷135°
UP310451441G	45	STEEL	CENTRAL	1,4	0÷135°	0÷135°
UP310451442G	45	STEEL	RIGHT	1,4	0÷135°	0÷135°
UP310451443G	45	STEEL	LEFT	1,4	0÷135°	0÷135°

## Sensors

## Accessories



Electronic (optical)

Pneumatic

Handlever

Self holding system

DF-K PNP M12  
DF-J NPN M12  
DF-Y PNP M12 White LED

DF-UPNW

UBF255063

UBK46P22