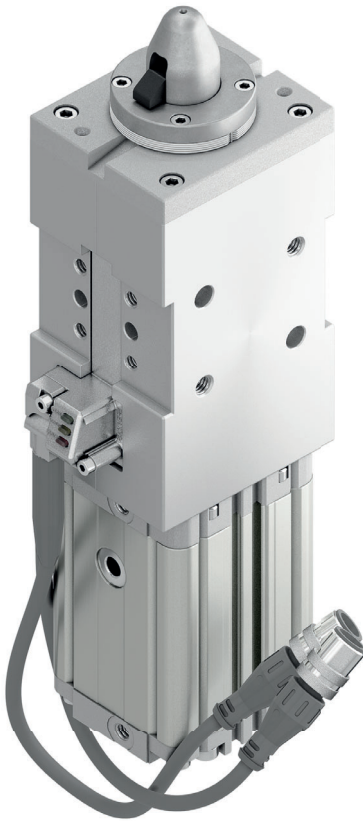


LUP 63

Pneumatic pin clamp with vanishing hook and pin, Ø63 mm

Pneumatic pin clamp with vanishing hook and pin, mainly designed for centering and clamping metal sheets in BIW underbody applications with no need to raise and lower the metal sheet during positioning operations

- Protection against welding debris and dust
- Irreversible
- High repeatability
- High wear resistance steel pin
- Electronic sensor with 2 cables and M12 connectors to detect the position of both the pin and hook



CHARACTERISTICS

Operating temperature	5° ÷ 45° C
Min./Max. Operating pressure	0,4 / 0,6 MPa
Bore Ø	63 mm
Clamping force	1500 N
Weight (without plate, pin and hook)	3,0 kg
Pneumatic supply ports	G1/8
Sensor	electronic with 2xM12 cables
Supply voltage	10 ÷ 30 Vdc
IP code	IP 65

CODIFICATION KEY

LU | P | 63 | S | E | 3 | 1 | - | |
 1 | 2 | 3 | 4 | 5 | 6 | 7 | 8



IRREVERSIBLE



LIGHTWEIGHT



HIGH REPEATABILITY



METAL SCRAPER

1

SERIES
LU = Pin clamp

2

VERSION
P = Pneumatic

3

SIZE
63 = Ø63 mm

4

MODEL
S = Vanishing hook and pin

5

SENSOR
N = No sensor (with protection plate)
E = DF-LUP sensor

6

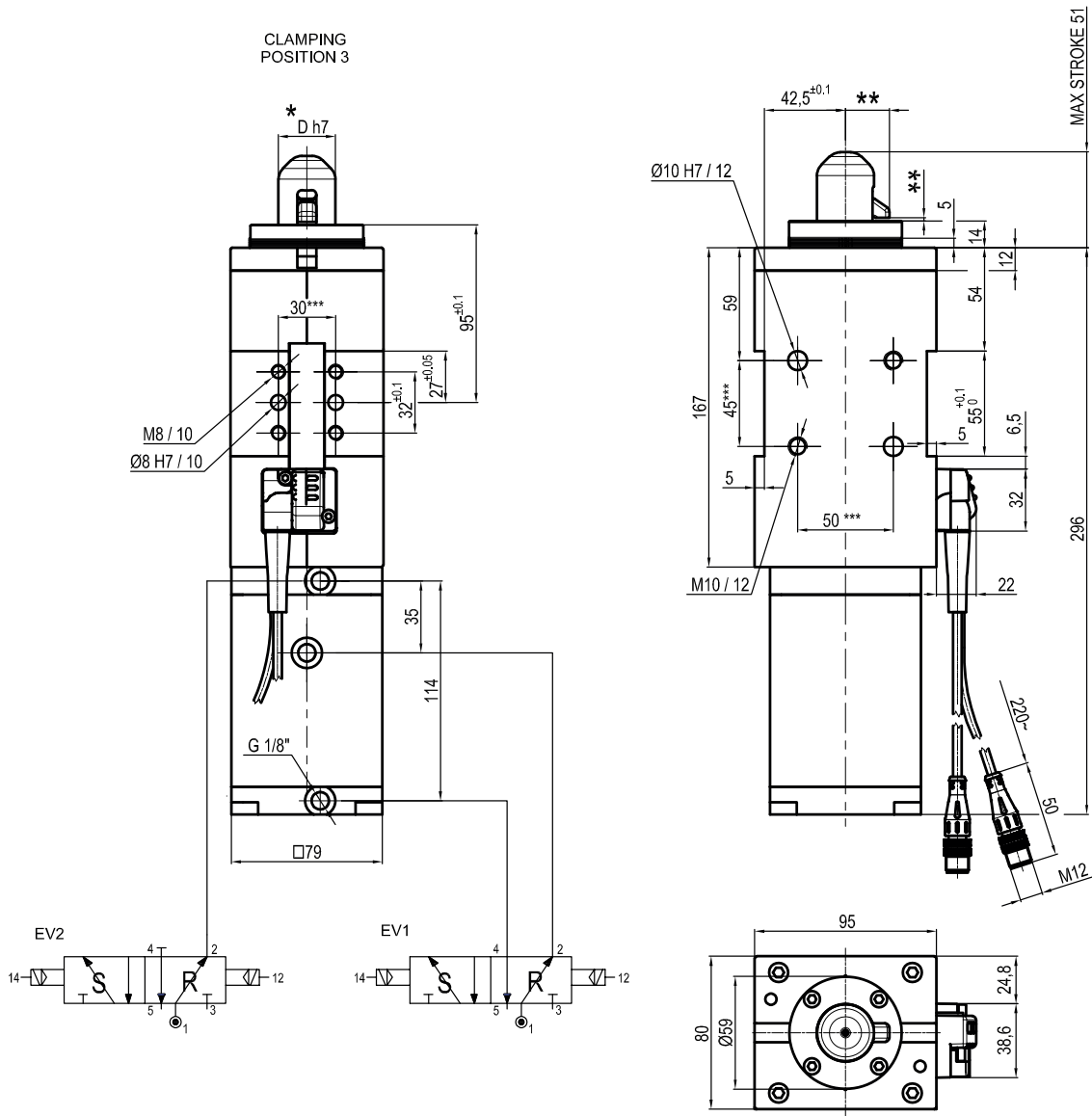
PIN DIAMETER
1 <= Ø19 mm
2 = Ø20 mm
3 = Ø25 mm
4 = Ø30 mm
5 = Ø35 mm
6 = Ø40 mm

7

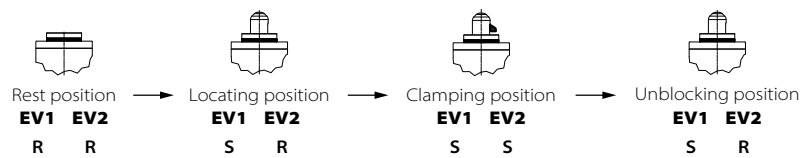
LOCATING PIN
1 = Locating pin included

8

PROGRESSIVE NUMBERING
Progressive numbers for special products are assigned by the Sales Department



** MISSING DIMENSION TO BE DEFINED ACCORDING TO CUSTOMER SPECIFICATIONS
 *** TOLERANCE BETWEEN DOWEL HOLES ± 0,02, BETWEEN SCREW HOLES ± 0,1



*Pin Option	ØD
1	≤19
2	20
3	25
4	30
5	35
6	40

Sensors



Electronic
 DF-LUP