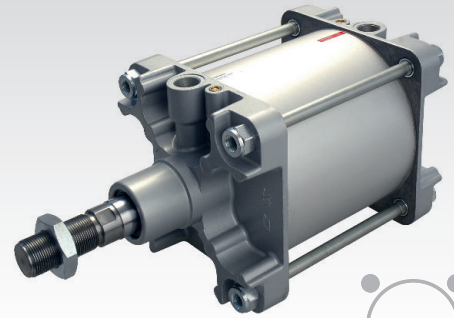


1

CHARACTERISTICS

Ambient temperature	-20 ÷ 80 °C
Fluid	filtered air, with or without lubrication
Working pressure	1,5 ÷ 10 bar
End-caps	die-cast aluminium
Barrel	anodized aluminium
Tie-rods	zinc-plated steel
Piston	die-cast aluminium
Guide slide	acetalic resin
Piston rod	chromium-plated steel, stainless steel upon request
Piston rod scraper seals	NBR
Piston seals	polyurethane (Ø160) - NBR (Ø200)
Cushionings	adjustable on both sides
Other available versions	tandem, two-position tandem, opposed, with common piston rod (upon request)



Available ATEX version upon request
CE Ex II 2Gc IICT5 II 2Dc T100°C

CODIFICATION KEY

K	2	0	0	1	6	0	0	0	8	0		
1	2	3	4	5	6	7						

1 Series	2 Type	3 Version	4 Bore (mm)
K = Ø 160/200 mm - ISO 15552 Pneumatic Cylinders	1 = Stainless steel piston rod 2 = Chromium-plated steel piston rod	00 = D.A. Standard version 01 = D.A. Through piston rod	160 = Ø160 200 = Ø200

D.A. = Double acting

5 Stroke (mm)	6 Magnetic	7 ATEX option
0025 = 25 0150 = 150 0320 = 320 0700 = 700 0050 = 50 0160 = 160 0350 = 350 0800 = 800 0075 = 75 0175 = 175 0400 = 400 0900 = 900 0080 = 80 0200 = 200 0450 = 450 1000 = 1000 0100 = 100 0250 = 250 0500 = 500 0125 = 125 0300 = 300 0600 = 600	M = Magnetic version	X = ATEX (upon request) See ATEX Catalogue for types and versions

K190 and K290 versions with high temperature seals (Max 120°C) and versions with low temperature seals (Max -30°C) available upon request

FIXING ELEMENTS AND ACCESSORIES

Ø	Female fork with clips	Articulated self-lubricating fork	Female rear hinge with pin	Counter hinge 90° (CETOP)	Narrow female hinge with pin	Articulated rear male hinge	Rear male hinge	Front/rear flange	Angle bracket	Front / rear hinge with floating pin	Hinge support
160											
200	KF-15160	KF-17160	KF-10160A	KF-19160CTA	KF-10160AS	KF-11160S	KF-11160	KF-12160	KF-13160	KF-14160AP	KF-41160200
	KF-15160	KF-17160	KF-10200A	KF-19200CTA	KF-10200AS	KF-11200S	KF-11200	KF-12200	KF-13200	KF-14200AP	KF-41160200

Ø	ISO intermediate hinge	DH sensor	Mounting bracket for DH sensor
160			
200	KF-14160	DH	DH-K160200
	KF-14200		DH-K160200