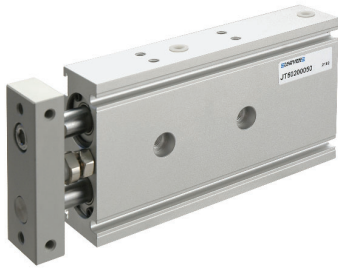


**1**
**Ø 6 ÷ 32 mm - Twin Rod Guided Cylinder**
**JTE**

 Ambient temperature: -5 ÷ 60 °C  
 Stroke adjustment: 0 ÷ 5 mm

Part No.	Ø	Working pressure (bar)	Theoretical thrust force (N)*		Standard stroke (mm)	Max stroke (mm)	Sensor
			Thrust	Traction			
JTES006 JTEV006	6	1,5 ÷ 7	28	15,5	10-20-30	50	DF-T + DF-R002 (adapter)
JTES010 JTEV010	10	1 ÷ 7	113	84	10-15-20-25-30 35-40-45-50-60-70	70	
JTES015 JTEV015	15	1 ÷ 7	200	150	10-15-20-25 30-35-40-45 50-60-70-75 80-90-100	120	
JTES020 JTEV020	20	0,5 ÷ 7	314	236		130	
JTES025 JTEV025	25	0,5 ÷ 7	490	378		150	
JTES032 JTEV032	32	0,5 ÷ 7	802	603	150		

**S** = Bearings  
**V** = Ball bushing

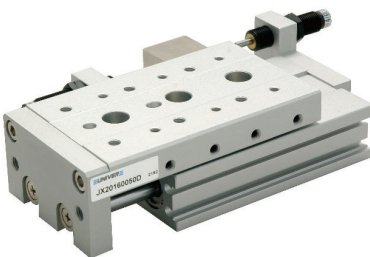
\* = Theoretical thrust force at 5 bar

**Ø 6 ÷ 20 mm - Pneumatic Mini Slide Unit**
**JX1**

 Ambient temperature: -5 ÷ 60 °C  
 Embodied linear guide

Part No.	Ø	Working pressure (bar)	Theoretical thrust force (N)*		Standard stroke (mm)	Sensor
			Thrust	Traction		
JX1006	6	1,2 ÷ 7	14,2	10,6	5-10-15-20-25 30-40-50-60	DF-T
JX1010	10	0,6 ÷ 7	39,3	33		
JX1016	16	0,6 ÷ 7	101	86		
JX1020	20	0,5 ÷ 7	157	132		

\* = Theoretical thrust force at 5 bar

**Ø 6 ÷ 25 mm - Slide Table Actuator**
**JX2**


Ambient temperature: 0 ÷ 60 °C

**Versions upon request:**

with stroke adjusting screw (add suffix R to part no. e.g. JX2008R)

with hydraulic shock absorbers Ø 8 ÷ 25 (add suffix D to part no. e.g. JX2008D)

Part No.	Ø	Working pressure (bar)	Theoretical thrust force (N)*		Standard stroke (mm)	Sensor
			Thrust	Traction		
JX2006	6	1 ÷ 8,5	25	20	10-20-30-40-50	DF-T
JX2008	8		51	38	10-20-30-40-50-75	
JX2012	12		113	85	10-20-30-40-50-75-100	
JX2016	16		201	151	10-20-30-40-50-75-100-125	
JX2020	20		314	236	10-20-30-40-50-75-100-125-150	
JX2025	25		491	380	10-20-30-40-50-75-100-125-150	

\* = Theoretical thrust force at 5 bar