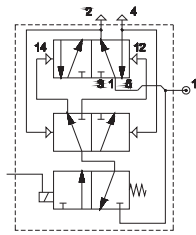


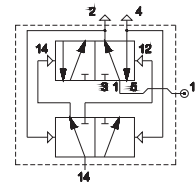
Contadores binários (flip flop)

■ **AP-500**
Com comando elétrico



Pressão máx de trabalho: 10 bar
Pressão mín de acionamento: 3 bar
Temperatura ambiente: -30 ÷ +80 °C
Bobina: U1 série DA

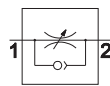
■ **AP-520**
Com comando pneumático



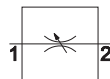
As eletroválvulas são fornecidas sem bobina, conector e porca de bloqueio

Reguladores de fluxo corpo metálico

■ **AM-50**
Reguladores de fluxo unidirecional e bidirecional
M5 - G 1/8 - G 1/4 - G 3/8 - G 1/2



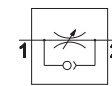
Regulação unidirecional



Regulação bidirecional

		Ø mm
AM-5060	M5	1
AM-5061	G1/8	1
AM-5062	G1/8	2,25
AM-5063	G1/8	3,5
AM-5064	G1/4	5
AM-5065	G1/4	6
AM-5066	G3/8	6
AM-5067	G1/2	9
AM-5070	M5	1
AM-5071	G1/8	1
AM-5072	G1/8	2,25
AM-5074	G1/4	5
AM-5076	G3/8	6
AM-5077	G1/2	9

■ **AM-50**
Reguladores de fluxo unidirecional G1/2 - G 3/4 - G 1

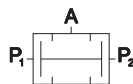


Regulação unidirecional

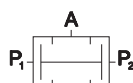
		Ø mm
AM-5090	G1/2	9
AM-5091	G3/4	9
AM-5092	G1	12

Válvulas processamento de sinais

■ **AM-51**
Válvulas de duas pressões "AND"

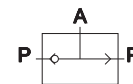


AM-5160
corpo rosqueado G1/8

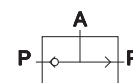


AM-5161
conexões rápidas Ø 4x2

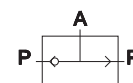
■ **AM-51**
Válvulas seletora "OR"



AM-5162
corpo rosqueado G1/8



AM-5163
conexões rápidas Ø 4x2




AM-5164
corpo rosqueado G1/4

Arranque progressivo

■ AM-52

Arranque progressivo G1/8 ÷ G1




Com regulação manual

Modelo	Tipo	Ø mm
AM-5240	G1/8	6,5
AM-5241	G1/4	6,5
AM-5242	G1/4	9,5
AM-5243	G3/8	9,5

Com interruptor elétrico

Modelo	Tipo	Ø mm
AM-5242E	G1/8	9,5
AM-5243E	G3/8	9,5



Com regulação manual

Modelo	Tipo	Ø mm
AM-5254	G1/2	15
AM-5255	G3/4	15
AM-5256	G1	24

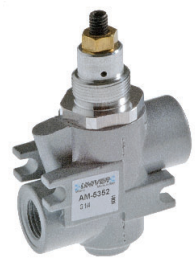
Com interruptor elétrico

Modelo	Tipo	Ø mm
AM-5259	G1/2	15
AM-5260	G3/4	15
AM-5261	G1	24

Economizadores

■ AM-53

Economizador G1/8 ÷ G1




Modelo	Tipo	Ø mm
AM-5350	G1/8	6,5
AM-5351	G1/4	6,5
AM-5352	G1/4	9,5
AM-5353	G3/8	9,5
AM-5354	G1/2	15
AM-5355	G3/4	15
AM-5356	G1	24

Válvulas de não retorno

■ AM-54

Válvulas de não retorno G1/2 - G3/4 - G1




Modelo	Tipo	Ø mm
AM-5400	G1/2	15
AM-5401	G3/4	15
AM-5402	G1	24

Válvulas de bloqueio


■ AM-55

Válvulas de bloqueio



Unidirecional

Modelo	Tipo	Ø mm
AM-5500	G1/8	6,5
AM-5501	G1/4	6,5
AM-5502	G1/4	9,5
AM-5503	G3/8	9,5
AM-5504	G1/2	15




Bidirecional

Modelo	Tipo	Ø mm
AM-5510	G1/8	6,5
AM-5511	G1/4	6,5
AM-5512	G1/4	9,5
AM-5513	G3/8	9,5
AM-5514	G1/2	15

Transdutores e pressostatos

■ AM-5200


Transdutor pneumoelétrico



AM-5200

■ AM-5220

Pressostato regulável



AM-5220