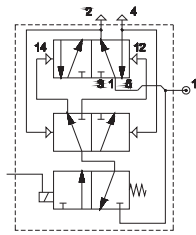
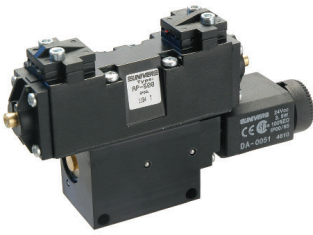


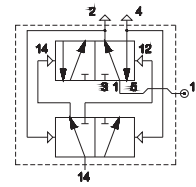
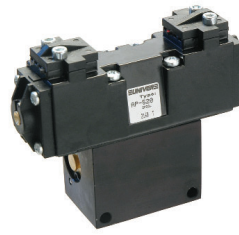
Binärzähler (Flip Flop)

■ **AP-500**
mit elektrischer Betätigung



Max. Betriebsdruck: 10 bar
Min. Antriebsdruck: 3 bar
Umgebungstemperatur: -30° ÷ +80° C
Spulen: U1 Serie DA

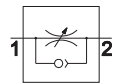
■ **AP-520**
mit pneumatischer Betätigung



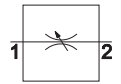
Magnetventile werden ohne Spulen, Steckverbinder und Befestigungsmuttern geliefert

Drosselventil mit Metallgehäuse

■ **AM-50**
Drossel- und Drosselrückschlagventile
M5 - G 1/8 - G 1/4 - G 3/8 - G 1/2



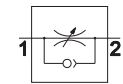
Drosselung in einer Richtung



Drosselung in beiden Richtungen

		Ø mm
AM-5060	M5	1
AM-5061	G1/8	1
AM-5062	G1/8	2,25
AM-5063	G1/8	3,5
AM-5064	G1/4	5
AM-5065	G1/4	6
AM-5066	G3/8	6
AM-5067	G1/2	9
AM-5070	M5	1
AM-5071	G1/8	1
AM-5072	G1/8	2,25
AM-5074	G1/4	5
AM-5076	G3/8	6
AM-5077	G1/2	9

■ **AM-50**
Drosselrückschlagventile G 1/2 - G 3/4 - G 1

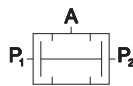


Drosselung in einer Richtung

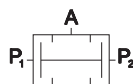
		Ø mm
AM-5090	G1/2	9
AM-5091	G3/4	9
AM-5092	G1	12

Ventile für Signalverarbeitung

■ **AM-51**
Zweidruckventile "UND"

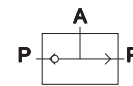


AM-5160
Gehäuse mit Gewinde
G 1/8

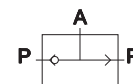


AM-5161
Schnellsteckanschlüsse
Ø 4x2

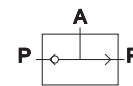
■ **AM-51**
Wechselventile "ODER"



AM-5162
Gehäuse mit Gewinde
G 1/8



AM-5163
Schnellsteckanschlüsse
Ø 4x2




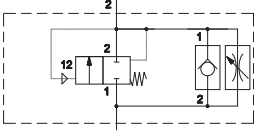
AM-5164
Gehäuse mit Gewinde
G 1/4

Progressive Anfahrventile

■ AM-52


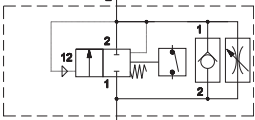
Progressive Anfahrventile G1/8 ÷ G 1

mit manueller Einstellung


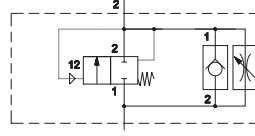
AM-5240	G1/8	6,5
AM-5241	G1/4	6,5
AM-5242	G1/4	9,5
AM-5243	G3/8	9,5

mit elektrischem Druckschalter


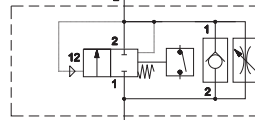
AM-5242E	G1/8	9,5
AM-5243E	G3/8	9,5

mit manueller Einstellung

AM-5254	G1/2	15
AM-5255	G3/4	15
AM-5256	G1	24

mit elektrischem Druckschalter

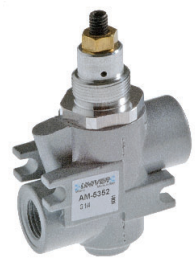
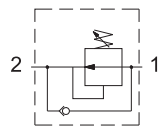



AM-5259	G1/2	15
AM-5260	G3/4	15
AM-5261	G1	24

Sparrventile

■ AM-53

Sparrventile G 1/8 ÷ G 1


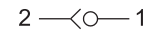



AM-5350	G1/8	6,5
AM-5351	G1/4	6,5
AM-5352	G1/4	9,5
AM-5353	G3/8	9,5
AM-5354	G1/2	15
AM-5355	G3/4	15
AM-5356	G1	24

Absperrventile

■ AM-54

Absperrventile G 1/2 - G 3/4 - G 1


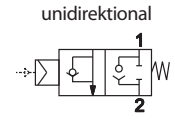
AM-5400	G1/2	15
AM-5401	G3/4	15
AM-5402	G1	24

Sperrventile

■ AM-55


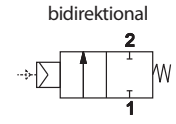
Sperrventile

unidirektional

AM-5500	G1/8	6,5
AM-5501	G1/4	6,5
AM-5502	G1/4	9,5
AM-5503	G3/8	9,5
AM-5504	G1/2	15

bidirektional


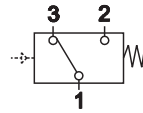



AM-5510	G1/8	6,5
AM-5511	G1/4	6,5
AM-5512	G1/4	9,5
AM-5513	G3/8	9,5
AM-5514	G1/2	15

Druckwandler und Druckschaltventile

■ AM-5200


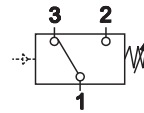
Pneumoelektrischer Druckwandler

AM-5200

■ AM-5220

Einstellbare Druckschaltventile

AM-5220