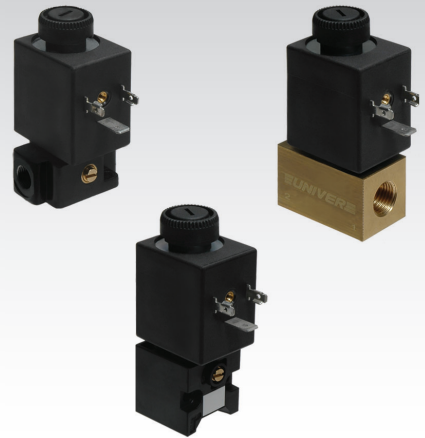


**CHARACTERISTICS**

Ambient temperature	-10 ÷ +50 °C			
Fluid	10 µm filtered air, with or without lubrication; neutral gases (versions for different fluids available upon request)			
Commutation system	direct intervention poppet with cushioned seals			
Pressure	0 ÷ 10 bar (2/2, 3/2 NC), 3 ÷ 10 bar (3/2 NO)			
Connections	on sub-base / threaded on the body			
	sub-base	G 1/8	G1/4	CNOMO
Nominal bore (mm)	2,1 ÷ 2,4	2,1 ÷ 2,4	1,6 ÷ 6	2,1 ÷ 2,4
Nominal flow rate (NI/min)	92 ÷ 150	100 ÷ 155	95 ÷ 650	92 ÷ 110
Power consumption	11W (DC) - 10 VA (AC)			
Connector	AM-5111			
Sleeve	U2			
Coil	DB			
Voltage	12 V DC - 24 V DC - 24 V AC - 110 V AC - 230 V AC			
Protection degree	IP65			



Available ATEX version upon request  
**CE Ex II 3 GD c nA II T5 -10°C ≤ Ta ≤ 45°C**

**U2 Sleeves - with moving core**

**Coil-sleeve locking nuts**



AB-0600 3/2 NO  
 AB-0613 3/2 NC  
 AB-0640 2/2 NC<sup>(a)</sup>  
 AB-0643 2/2 NC

(a) = Suitable for bases with diameter 3 ÷ 6 mm

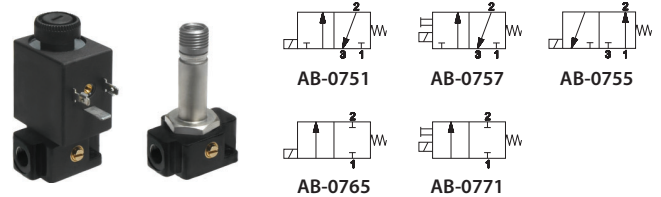
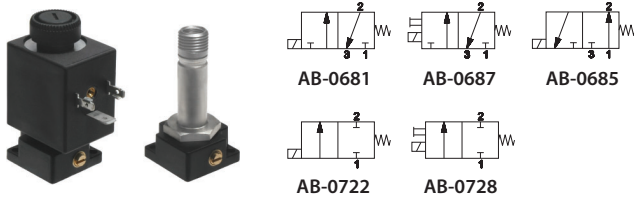


AM-5214A 3/2 NO  
 AM-5212A 3/2 NC  
 AM-5212B 2/2 NC

**2/2 - 3/2 U2 Electropilot**

**2/2 - 3/2 U2 Electropilot G1/8**

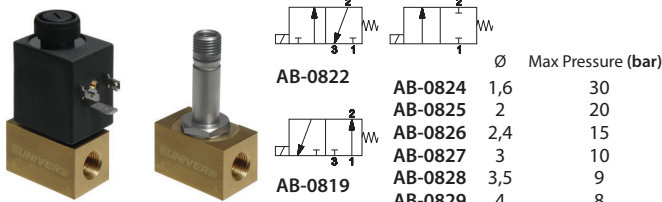
■ For mounting on U2 sub-base G1/8



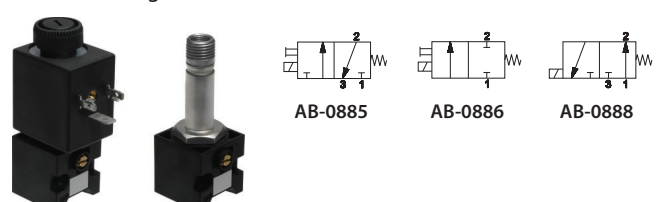
**2/2 - 3/2 U2 Electropilot G1/4**

**2/2 - 3/2 U2 CNOMO Electropilot**

■ For mounting on U2 G1/8 SPEED sub-base



■ U2 - 17 VA Coil for version 2/2  
 DB-0607 24V AC - 50/60 Hz  
 DB-0608 110V AC - 50/60 Hz  
 DB-0610 230V AC - 50/60 Hz



The bore (mm) indicated on 3/2 valves refers to the exhaust

**SPEED Series modular sub-base**

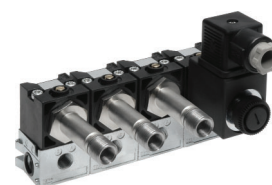
■ U2 G1/8 sub-base



AB-0900



2/2 - 3/2  
U2 Electropilot



2/2 - 3/2  
U2 CNOMO Electropilot

Manual override:

Impulse screw – 2 positions (standard supplied). Recessed button - 1 position, Impulse screw - 1-2 positions, Locking nut with button – 1 position (upon request)

Solenoid valves are supplied without coil, connector and locking nuts

See ATEX Catalogue for types and versions