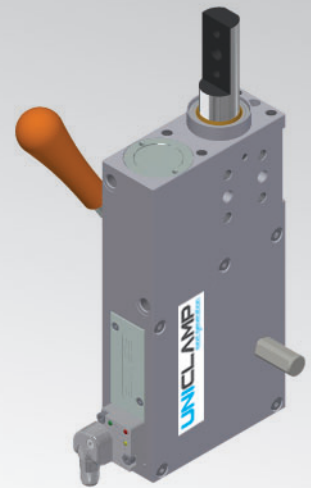






ULY40

UNICLAMP pneumatic retractable locating pin unit with hand lever, toggle-joint mechanism, single rod



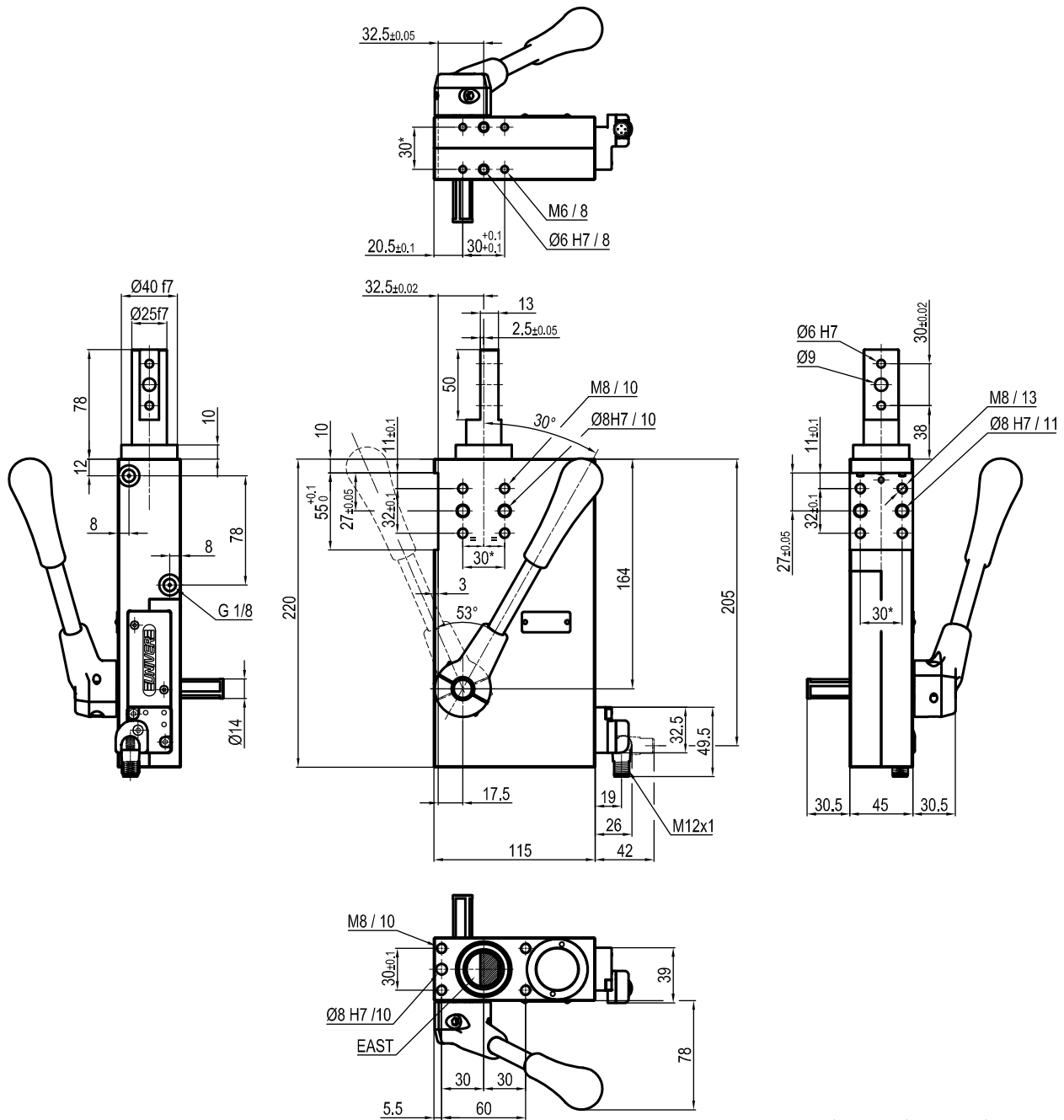
U	L	Y	4	0	0	4	0	A	E	K	0
1	2	3	4				5	6	7	8	

1 Series	2 Version	3 Size
UL = UNICLAMP locating pin unit	Y = Pneumatic, with hand lever, toggle joint-mechanism, single rod	40 = Ø 40 mm

4 Stroke	5 Rod end style	6 Rod orientation
040 = 40 mm	<p>A = Rod for off -set pins</p> <p>B = Rod with profiled end</p> <p>C = Rod with cross-profiled end inner Ø 16 mm</p> <p>D = Rod for off -set pins with oversized dowel holes</p>	<p>X = Symmetrical</p> <p>E* = East </p> <p>O* = West </p> <p>N* = North </p> <p>S* =South </p> <p>*Only with A and D rod end style</p>

7 Sensor	8 Product Revision
<p>N = No sensor with (with protection plate)</p> <p>K = Electronic sensor PNP (optical) (DF-K)</p>	Assigned by UNIVER

ULY40040A_K0

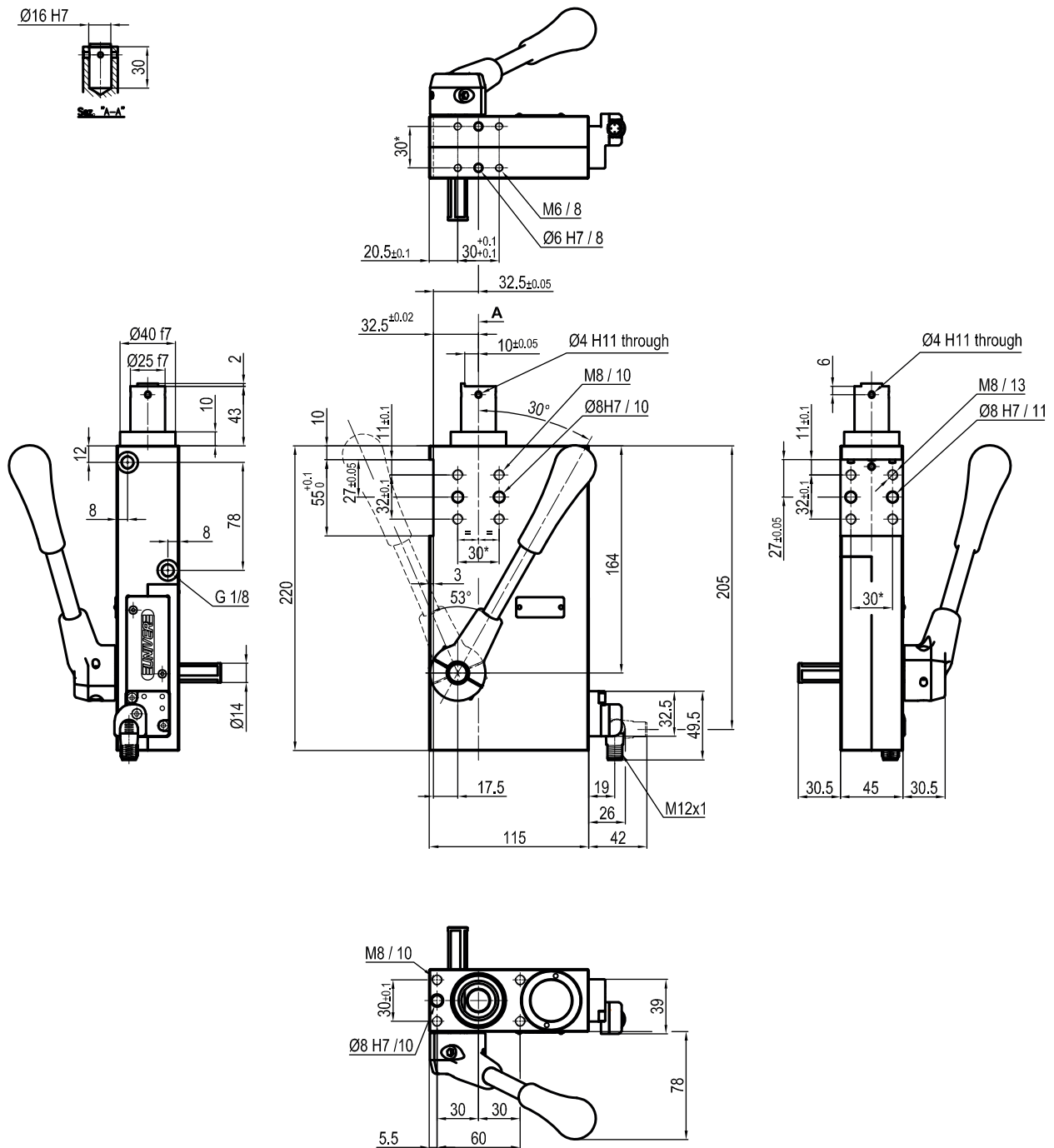


Bore Ø	Min. pull force 0,5 MPa	Max. push force 0,5 MPa	Max. bending moment 6 Nm	Max. deflection moment 7,5 Nm	Weight
40 mm	200 N	3100 N	±0,06°	±0,03°	5,7 Kg

Min./Max. operating pressure: **0,4 / 0,6 MPa**
 Operating temperature: **5° ÷ 45° C**
 Strokes in mm: **40**
 Electronic sensor with M12 swivel connector, from 0° to 90°,
 in steps of 10°
 Supply voltage: 10 ÷ 30 Vdc
 IP code: **IP 65**
 Manual actuation max torque: **40 Nm**

*: TOLERANCE BETWEEN DOWEL HOLES ± 0,02, BETWEEN SCREW HOLES ± 0,1

Subject to technical modifications without notice

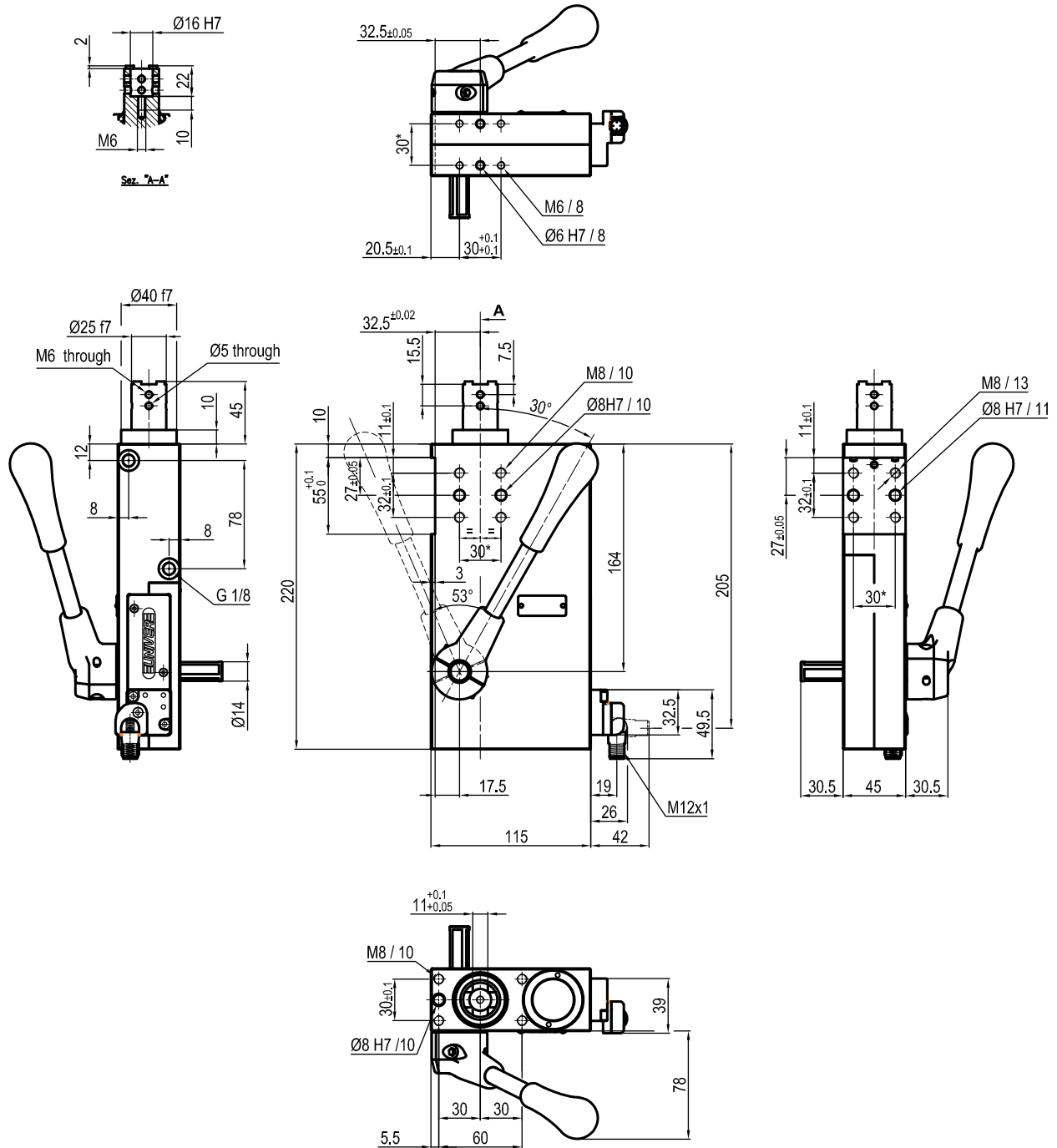
ULY40040BXK0


Bore Ø	Min. pull force 0,5 MPa	Max. push force 0,5 MPa	Max. bending moment 6 Nm	Max. deflection moment 7,5 Nm	Weight
40 mm	200 N	3100 N	±0,06°	±0,03°	5,7 Kg

Min./Max. operating pressure: **0,4 / 0,6 MPa**
 Operating temperature: **5° ÷ 45° C**
 Strokes in mm: **40**
 Electronic sensor with M12 swivel connector, from 0° to 90°, in steps of 10°
 Supply voltage: 10 ÷ 30 Vdc
 IP code: **IP 65**
 Manual actuation max torque: **40 Nm**

*: TOLERANCE BETWEEN DOWEL HOLES ± 0,02, BETWEEN SCREW HOLES ± 0,1

Subject to technical modifications without notice

ULY40040CXK0


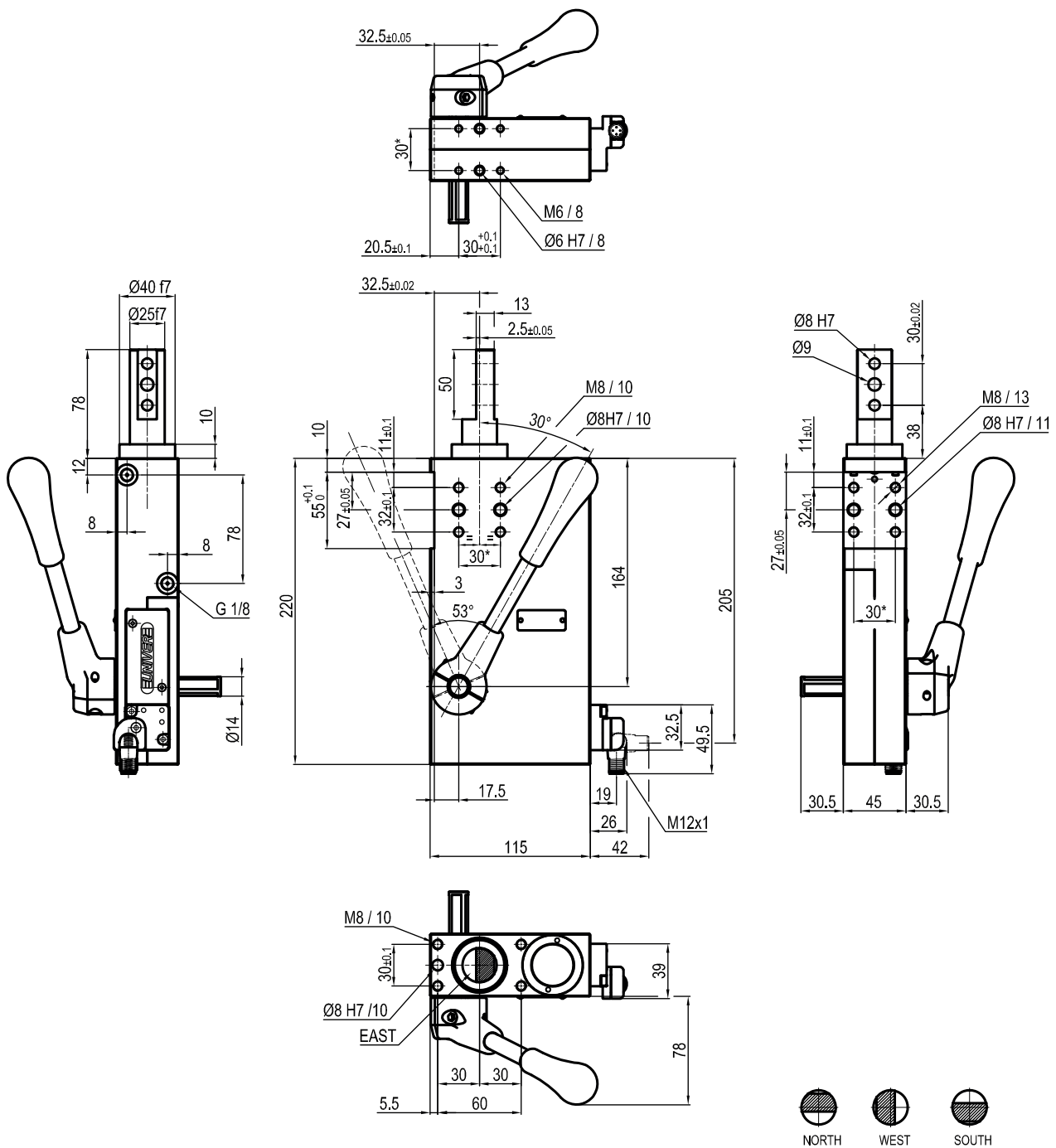
Bore Ø	Min. pull force 0,5 MPa	Max. push force 0,5 MPa	Max. bending moment 6 Nm	Max. deflection moment 7,5 Nm	Weight
40 mm	200 N	3100 N	±0,06°	±0,03°	5,7 Kg

Min./Max. operating pressure: **0,4 / 0,6 MPa**
 Operating temperature: **5° ÷ 45° C**
 Strokes in mm: **40**
 Electronic sensor with M12 swivel connector, from 0° to 90°,
 in steps of 10°
 Supply voltage: 10 ÷ 30 Vdc
 IP code: **IP 65**
 Manual actuation max torque: **40 Nm**

*: TOLERANCE BETWEEN DOWEL HOLES ± 0,02, BETWEEN SCREW HOLES ± 0,1

Subject to technical modifications without notice

ULY40040D_K0



Bore Ø	Min. pull force 0,5 MPa	Max. push force 0,5 MPa	Max. bending moment 6 Nm	Max. deflection moment 7,5 Nm	Weight
40 mm	200 N	3100 N	±0,06°	±0,03°	5,7 Kg

Min./Max. operating pressure: **0,4 / 0,6 MPa**
 Operating temperature: **5° ÷ 45° C**
 Strokes in mm: **40**
 Electronic sensor with M12 swivel connector, from 0° to 90°, in steps of 10°
 Supply voltage: 10 ÷ 30 Vdc
 IP code: **IP 65**
 Manual actuation max torque: **40 Nm**

*: TOLERANCE BETWEEN DOWEL HOLES ± 0,02, BETWEEN SCREW HOLES ± 0,1

Subject to technical modifications without notice