

ULR63

UNICLAMP Pneumatic compact locating pin unit, single rod, double internal guide



U	L	R	6	3	0	4	0	C	X	K	0
1	2	3	4		5	6	7	8			

1 Series	2 Version	3 Size	4 Stroke
----------	-----------	--------	----------

UL = UNICLAMP locating pin unit
R = Pneumatic, compact, single rod, double internal guide
63 = Ø 63 mm
015 = 15 mm **060** = 60 mm
025 = 25 mm **075*** = 75 mm
040 = 40 mm **100*** = 100 mm
050 = 50 mm **110*** = 110 mm

* special strokes **oversized body**

5 Rod end style	6 Rod orientation	7 Sensor
-----------------	-------------------	----------

A = Rod for off-set pins
B = Rod with profled end
C = Rod with cross-profiled end inner Ø 16 mm
D = Rod for off-set pins with oversized dowel holes
E = Rod with cross profiled end inner Ø 10 mm
F = Rod for side mounting
H = Rod with flat end, inner Ø10 mm
I = Rod with flat end, inner Ø 12 mm
L = Rod with inner Ø 12 mm compatible with CNOMO standard
M = Rod with inner Ø 20 mm compatible with CNOMO standard

X = Symmetrical

E* = East



O* = West



N* = North



S* = South



*Only with A and D rod end style

D = Pneumatic sensor

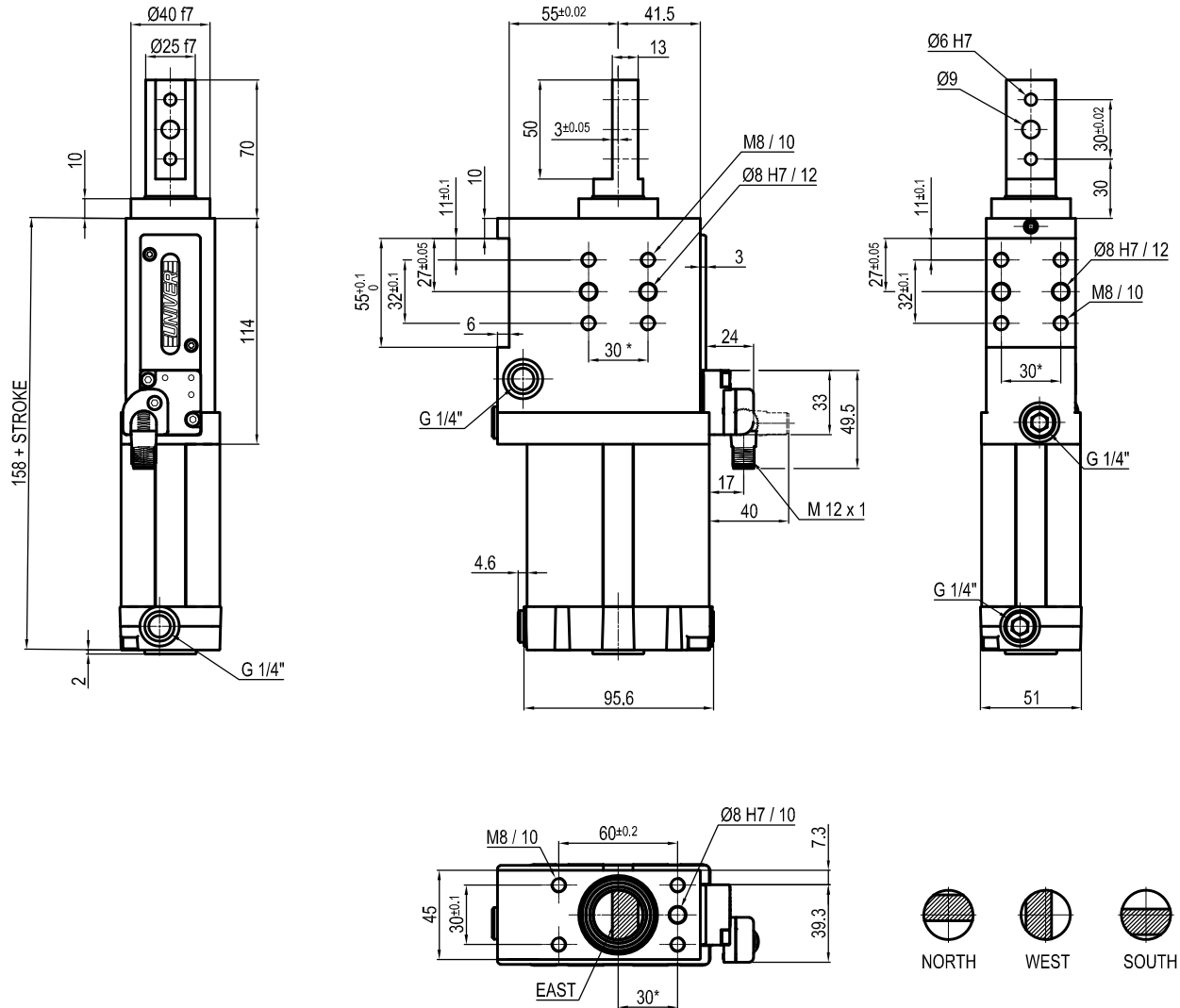
N = No sensor (with protection plate)

K = Electronic sensor PNP (optical) (DF-K)

8 Product revision

Assigned by UNIVER

ULR63__A_K0



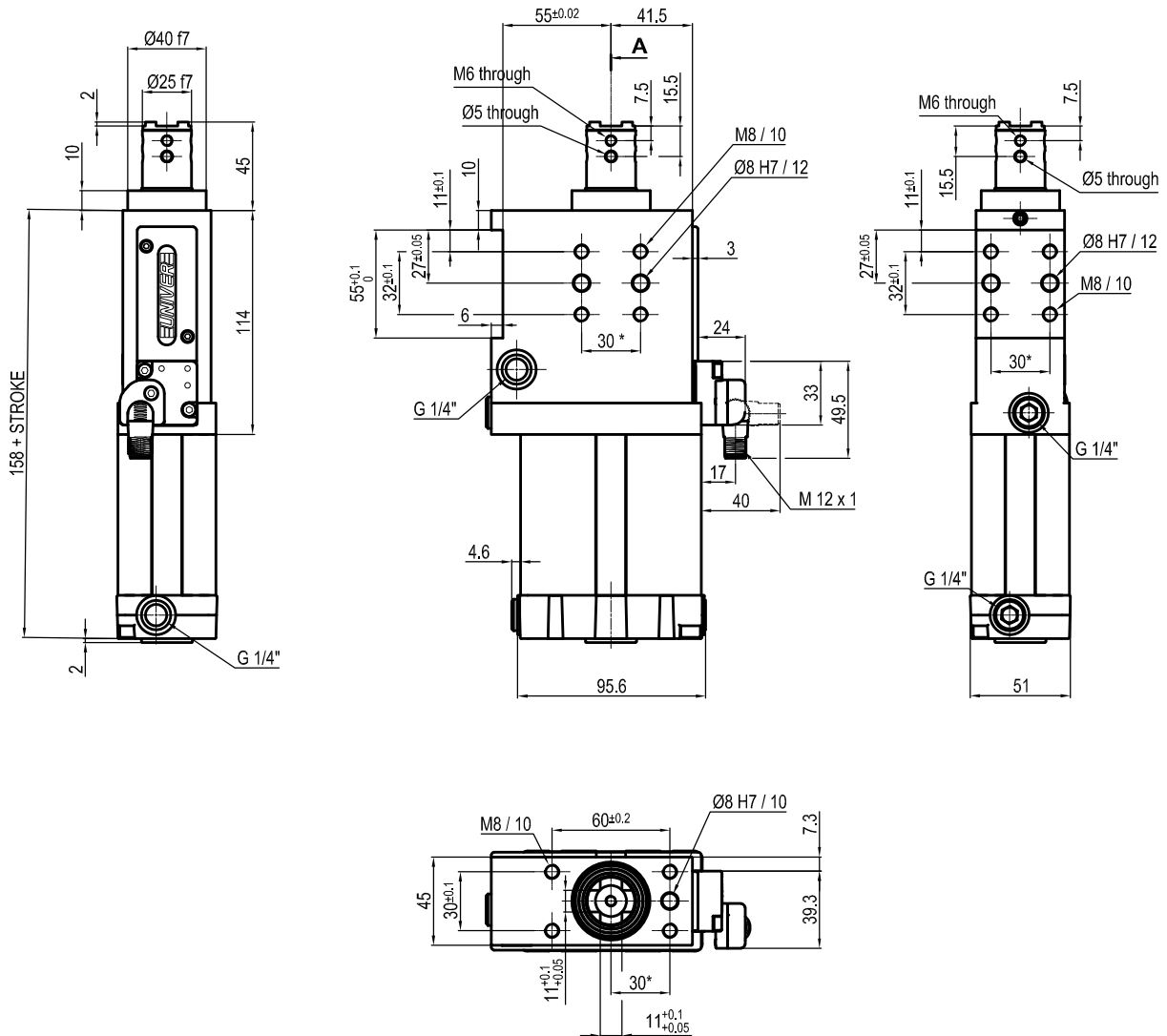
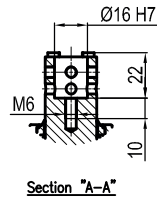
Bore Ø	Max. pull force 0,5 MPa	Max. push force 0,5 MPa	Max. torque 6 Nm	Max. deflection moment 7,5 Nm	Weight
63 mm	1430 N	1530 N	± 0.06°	± 0.03°	3,2 Kg

Min./Max. operating pressure: **0,4 / 0,6 MPa**
 Operating temperature: **5°± 45° C**
 Strokes in mm.: **15 - 25 - 40 - 50 - 60**
 Electronic sensor with M12 swivel connector, from 0° to 90°,
 in steps of 10°
 Supply voltage: **10 ÷ 30 Vdc**
 IP code: **IP 65**

* : TOLERANCE BETWEEN DOWELS ± 0,02, BETWEEN SCREW HOLES ± 0,1

Subject to technical modifications without notice

ULR63__CXK0



Bore Ø	Max. pull force 0,5 MPa	Max. push force 0,5 MPa	Max. torque 6 Nm	Max. deflection moment 7,5 Nm	Weight
63 mm	1430 N	1530 N	± 0.06°	± 0.03°	3,2 Kg

Min./Max. operating pressure: **0,4 / 0,6 MPa**
 Operating temperature: **5°± 45° C**
 Strokes in mm.: **15 - 25 - 40 - 50 - 60**
 Electronic sensor with M12 swivel connector, from 0° to 90°,
 in steps of 10°
 Supply voltage: **10 ÷ 30 Vdc**
 IP code: **IP 65**

* : TOLERANCE BETWEEN DOWELS ± 0,02, BETWEEN SCREW HOLES ± 0,1

Subject to technical modifications without notice