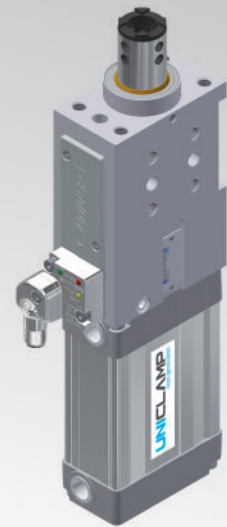


ULP50

UNICLAMP Pneumatic locating pin unit, single rod, double internal guide



U	L	P	5	0	0	4	0	C	X	K	0
1	2	3	4				5	6	7	8	

1 Series	2 Version	3 Size	4 Stroke
----------	-----------	--------	----------

UL = UNICLAMP locating pin unit
P = Pneumatic, single rod, double internal guide
50 = Ø 50 mm
015 = 15 mm **060** = 60 mm
025 = 25 mm **075*** = 75 mm
040 = 40 mm **100*** = 100 mm
050 = 50 mm **110*** = 110 mm
 * special strokes **oversized body**

5 Rod end style	6 Rod orientation	7 Sensor
-----------------	-------------------	----------

A = Rod for off-set pins
B = Rod with profiled end
C = Rod with cross-profiled end inner Ø 16 mm
D = Rod for off-set pins with oversized dowel holes
E = Rod with cross profiled end inner Ø 10 mm
F = Rod for side mounting
H = Rod with flat end, inner Ø10 mm
I = Rod with flat end, inner Ø12 mm
L = Rod with inner Ø12 mm compatible with CNOMO standard
M = Rod with inner Ø 20 mm compatible with CNOMO standard

X = Symmetrical

E* = East



O* = West



N* = North



S* = South



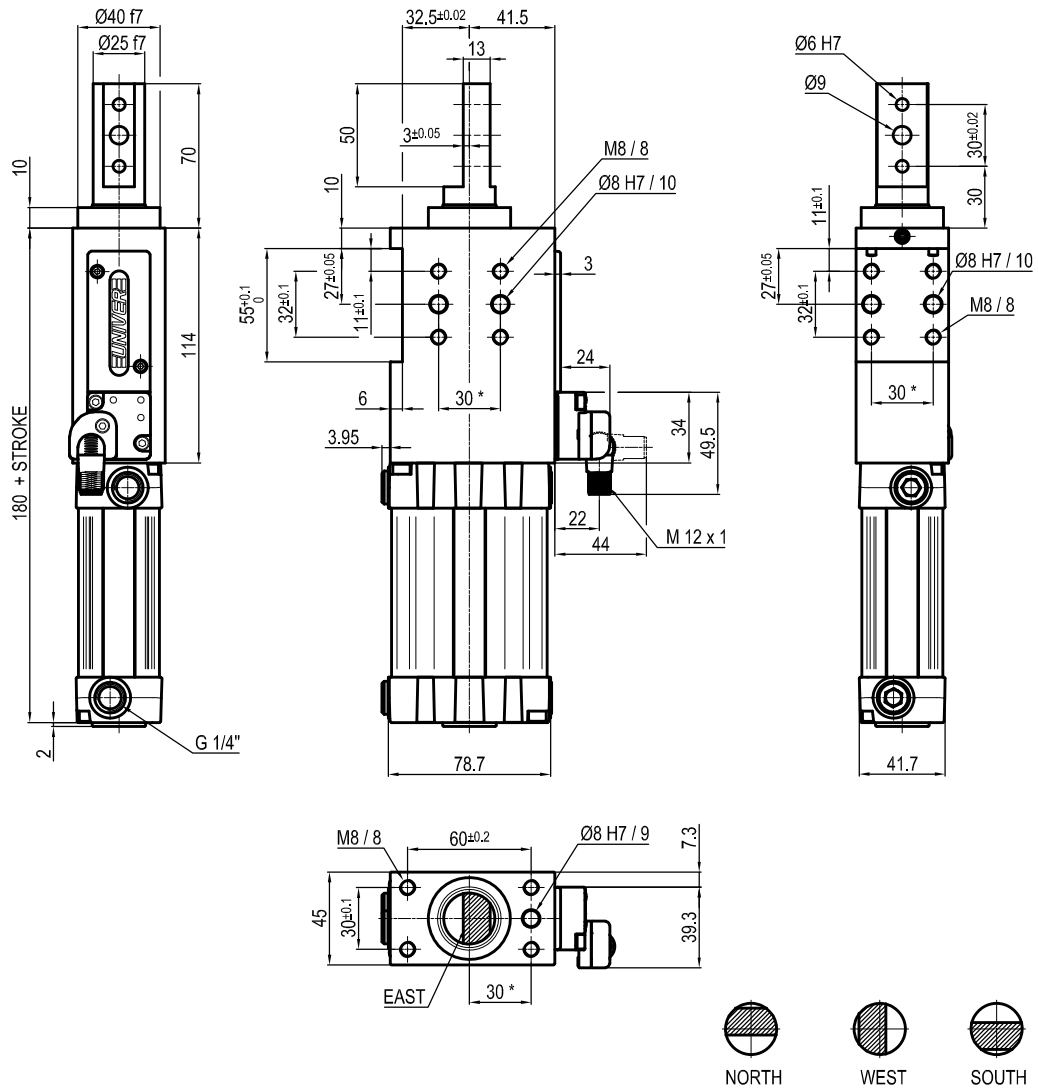
*Only with A and D rod end style

D = Pneumatic sensor
N = No sensor (with protection plate)
K = Electronic sensor PNP (optical) (DF-K)

8 Product revision

Assigned by UNIVER

ULP50__A_K0



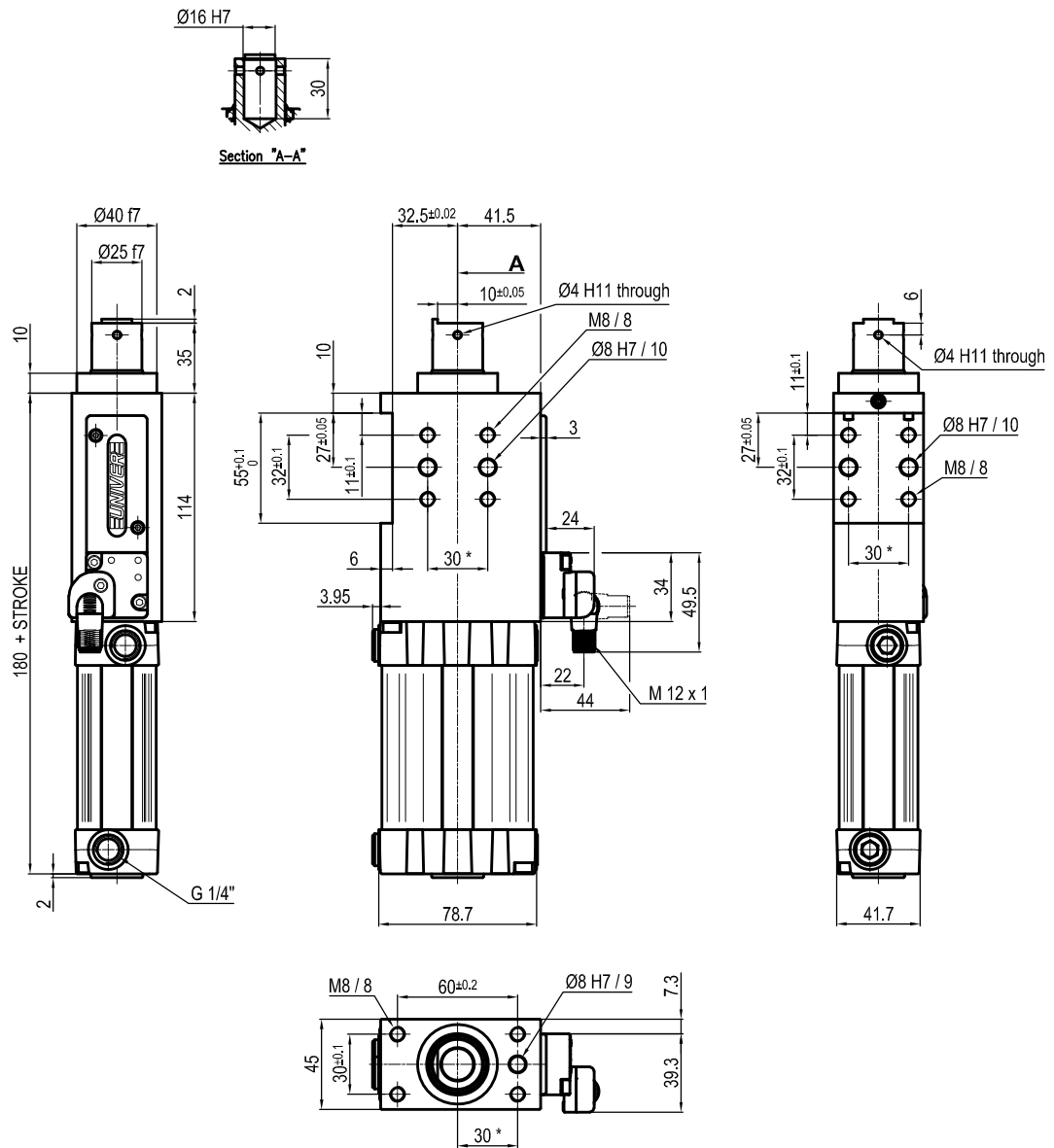
Bore Ø	Max. pull force 0,5 MPa	Max. push force 0,5 MPa	Max. torque 6 Nm	Max. deflection moment 5,5 Nm	Weight
50 mm	860 N	960 N	± 0,06°	± 0,03°	2,3 Kg

Min./Max. operating pressure: **0,4 / 0,6 MPa**
 Operating temperature: **5° ± 45° C**
 Strokes in mm.: **15 - 25 - 40 - 50 - 60**
 Electronic sensor with M12 swivel connector, from 0° to 90°,
 in steps of 10°
 Supply voltage: 10 ÷ 30 Vdc
 IP code: **IP 65**
 Pneumatic ports on both sides

* : TOLERANCE BETWEEN DOWELS ± 0.02, BETWEEN SCREW HOLES ± 0.1

Subject to technical modifications without notice

ULP50__BXK0



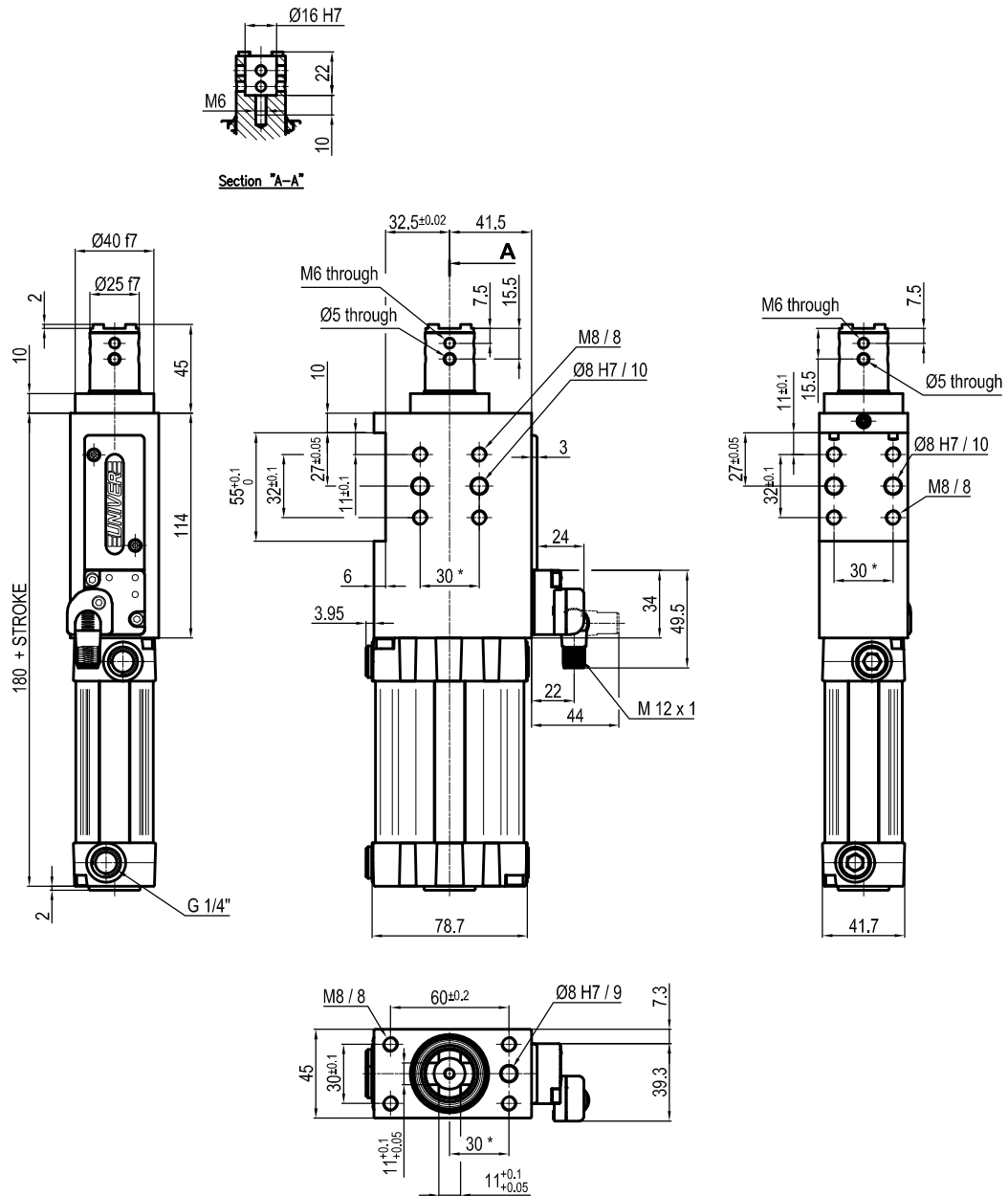
Bore Ø	Max. pull force 0,5 MPa	Max. push force 0,5 MPa	Max. torque 6 Nm	Max. deflection moment 5,5 Nm	Weight
50 mm	860 N	960 N	$\pm 0,06^\circ$	$\pm 0,03^\circ$	2,3 Kg

Min./Max. operating pressure: **0,4 / 0,6 MPa**
 Operating temperature: **5° ± 45° C**
 Strokes in mm.: **15 - 25 - 40 - 50 - 60**
 Electronic sensor with M12 swivel connector, from 0° to 90°,
 in steps of 10°
 Supply voltage: 10 ÷ 30 Vdc
 IP code: **IP 65**
 Pneumatic ports on both sides

* : TOLERANCE BETWEEN DOWELS ± 0.02 , BETWEEN SCREW HOLES ± 0.1

Subject to technical modifications without notice

ULP50__CXK0



Bore Ø	Max. pull force 0,5 MPa	Max. push force 0,5 MPa	Max. torque 6 Nm	Max. deflection moment 5,5 Nm	Weight
50 mm	860 N	960 N	± 0,06°	± 0,03°	2,3 Kg

 Min./Max. operating pressure: **0,4 / 0,6 MPa**

 Operating temperature: **5° ± 45° C**

 Strokes in mm.: **15 - 25 - 40 - 50 - 60**

Electronic sensor with M12 swivel connector, from 0° to 90°, in steps of 10°

Supply voltage: 10 ÷ 30 Vdc

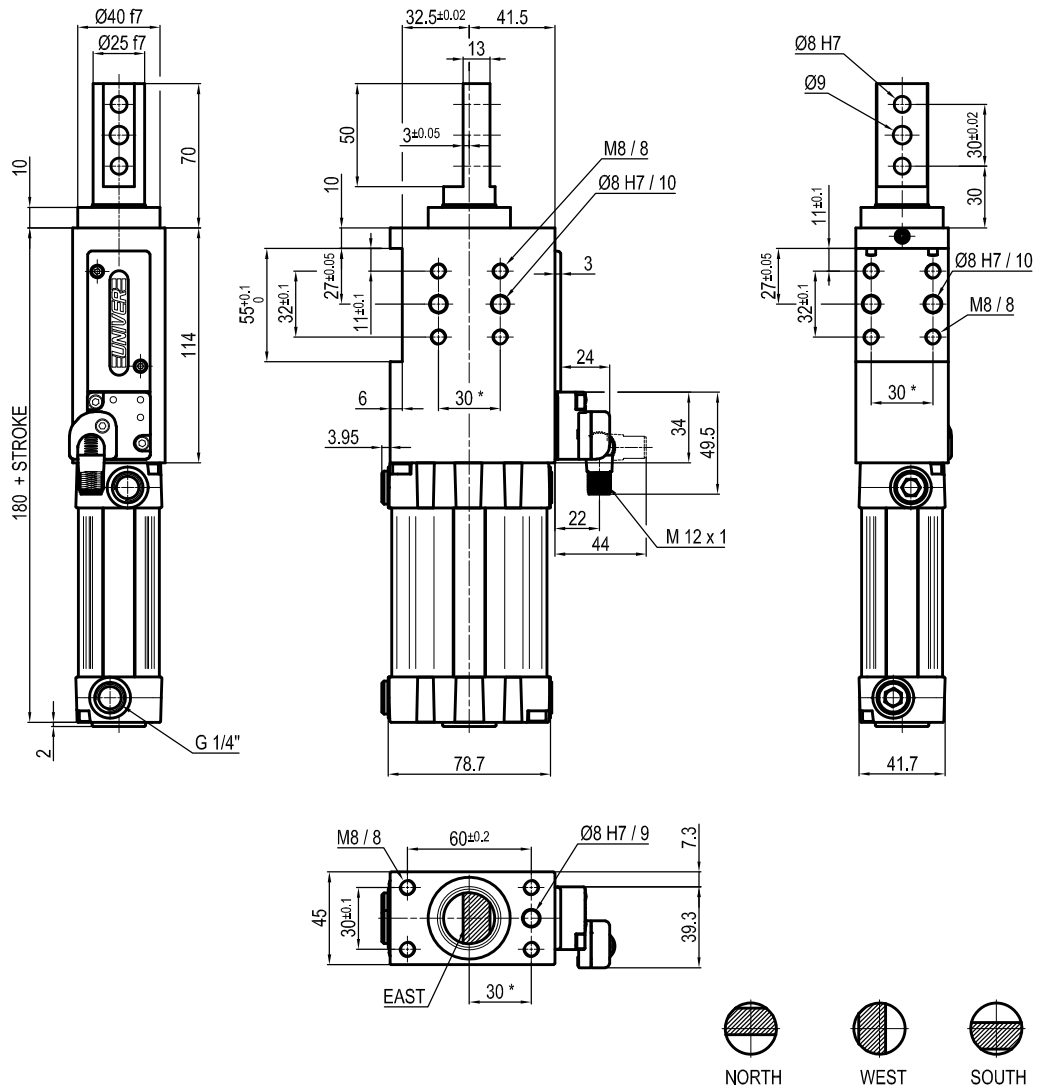
 IP code: **IP 65**

Pneumatic ports on both sides

* : TOLERANCE BETWEEN DOWELS ± 0.02, BETWEEN SCREW HOLES ± 0.1

Subject to technical modifications without notice

ULP50__D_K0



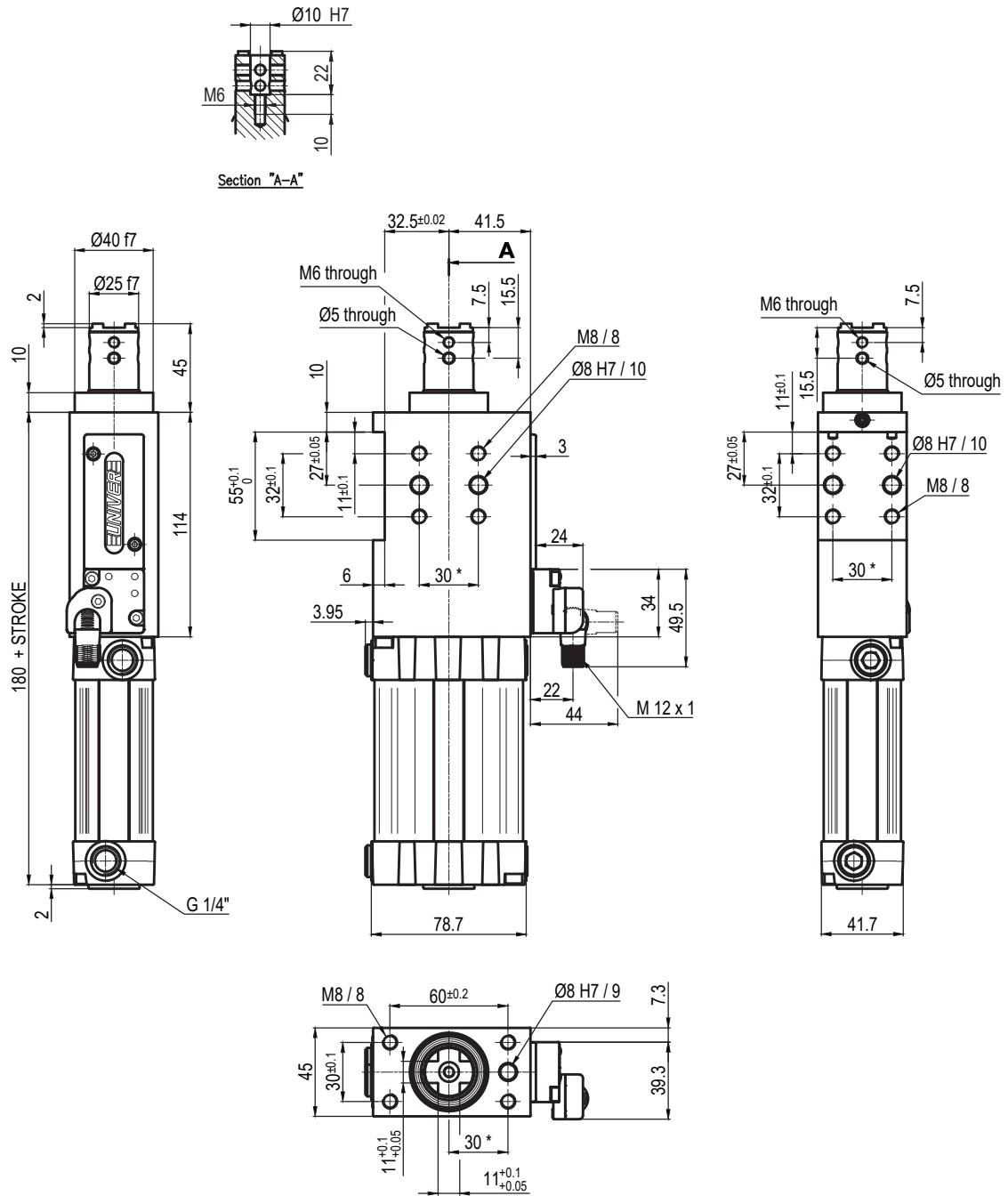
Bore \varnothing	Max. pull force 0,5 MPa	Max. push force 0,5 MPa	Max. torque 6 Nm	Max. deflection moment 5,5 Nm	Weight
50 mm	860 N	960 N	$\pm 0,06^\circ$	$\pm 0,03^\circ$	2,3 Kg

Min./Max. operating pressure: **0,4 / 0,6 MPa**
 Operating temperature: **5° ± 45° C**
 Strokes in mm.: **15 - 25 - 40 - 50 - 60**
 Electronic sensor with M12 swivel connector, from 0° to 90°, in steps of 10°
 Supply voltage: 10 ÷ 30 Vdc
 IP code: **IP 65**
 Pneumatic ports on both sides

* : TOLERANCE BETWEEN DOWELS $\pm 0,02$, BETWEEN SCREW HOLES $\pm 0,1$

Subject to technical modifications without notice

ULP50__EXK0



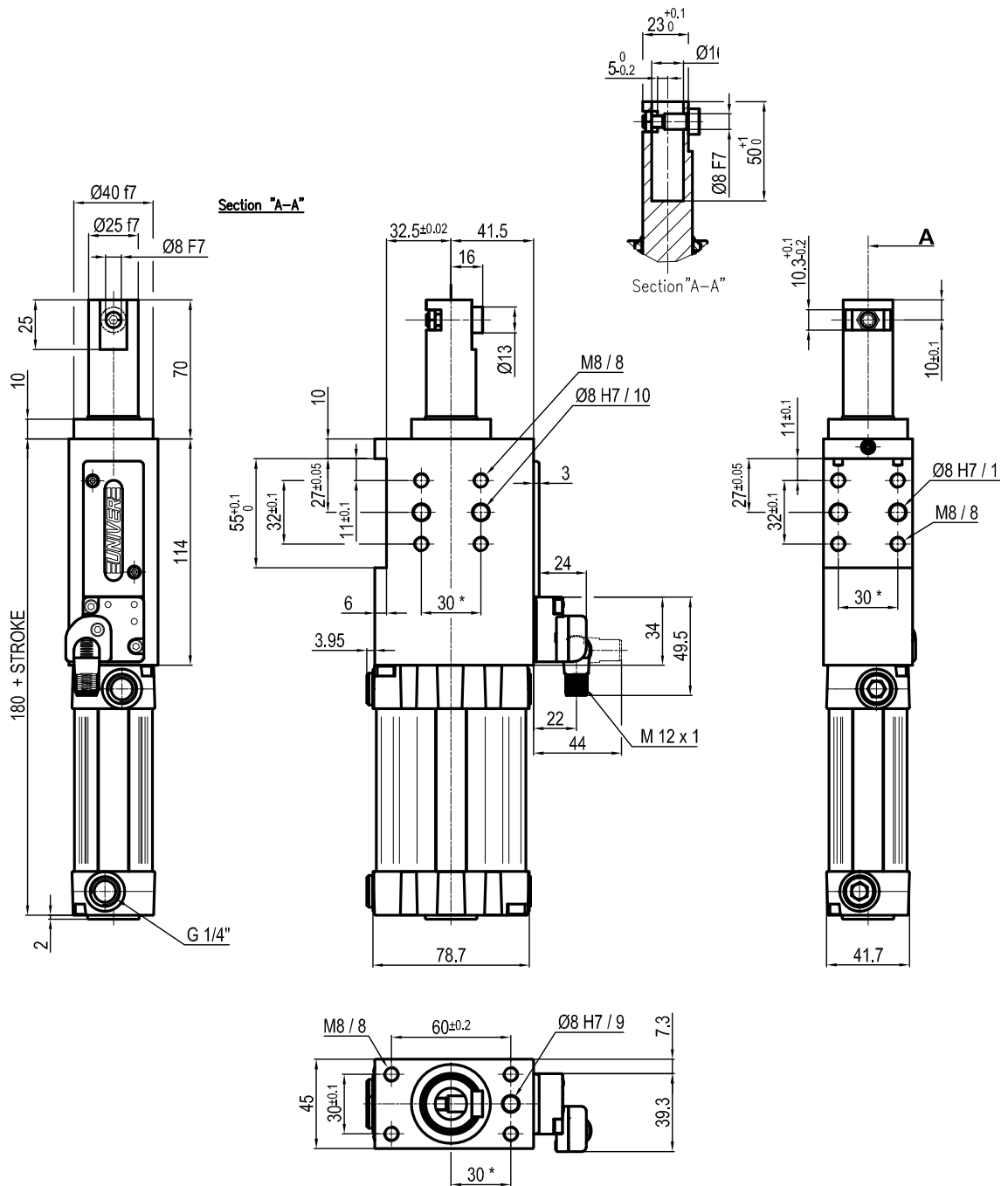
Bore Ø	Max. pull force 0,5 MPa	Max. push force 0,5 MPa	Max. torque 6 Nm	Max. deflection moment 5,5 Nm	Weight
50 mm	860 N	960 N	± 0,06°	± 0,03°	2,3 Kg

Min./Max. operating pressure: **0,4 / 0,6 MPa**
 Operating temperature: **5° ± 45° C**
 Strokes in mm.: **15 - 25 - 40 - 50 - 60**
 Electronic sensor with M12 swivel connector, from 0° to 90°,
 in steps of 10°
 Supply voltage: 10 ÷ 30 Vdc
 IP code: **IP 65**
 Pneumatic ports on both sides

* : TOLERANCE BETWEEN DOWELS ± 0.02, BETWEEN SCREW HOLES ± 0.1

Subject to technical modifications without notice

ULP50__FXK0



Bore Ø	Max. pull force 0,5 MPa	Max. push force 0,5 MPa	Max. torque 6 Nm	Max. deflection moment 5,5 Nm	Weight
50 mm	860 N	960 N	± 0,06°	± 0,03°	2,3 Kg

 Min./Max. operating pressure: **0,4 / 0,6 MPa**

 Operating temperature: **5° ± 45° C**

 Strokes in mm.: **15 - 25 - 40 - 50 - 60**

Electronic sensor with M12 swivel connector, from 0° to 90°, in steps of 10°

Supply voltage: 10 ÷ 30 Vdc

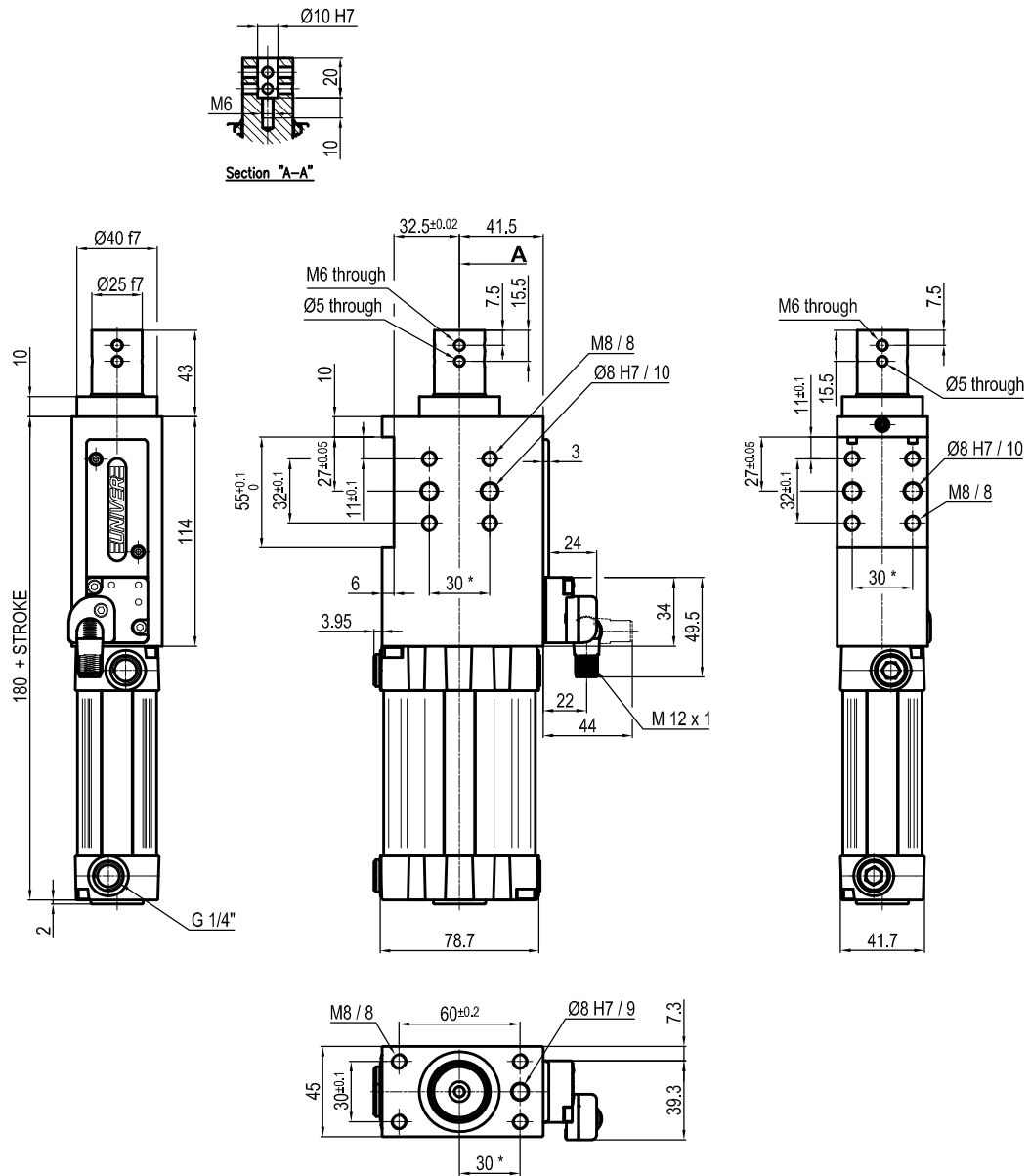
 IP code: **IP 65**

Pneumatic ports on both sides

*: TOLERANCE BETWEEN DOWELS ± 0,02, BETWEEN SCREW HOLES ± 0,1

Subject to technical modifications without notice

ULP50__HXK0



Bore Ø	Max. pull force 0,5 MPa	Max. push force 0,5 MPa	Max. torque 6 Nm	Max. deflection moment 5,5 Nm	Weight
50 mm	860 N	960 N	± 0,06°	± 0,03°	2,3 Kg

 Min./Max. operating pressure: **0,4 / 0,6 MPa**

 Operating temperature: **5°± 45° C**

 Strokes in mm.: **15 - 25 - 40 - 50 - 60**

Electronic sensor with M12 swivel connector, from 0° to 90°, in steps of 10°

Supply voltage: 10 ÷ 30 Vdc

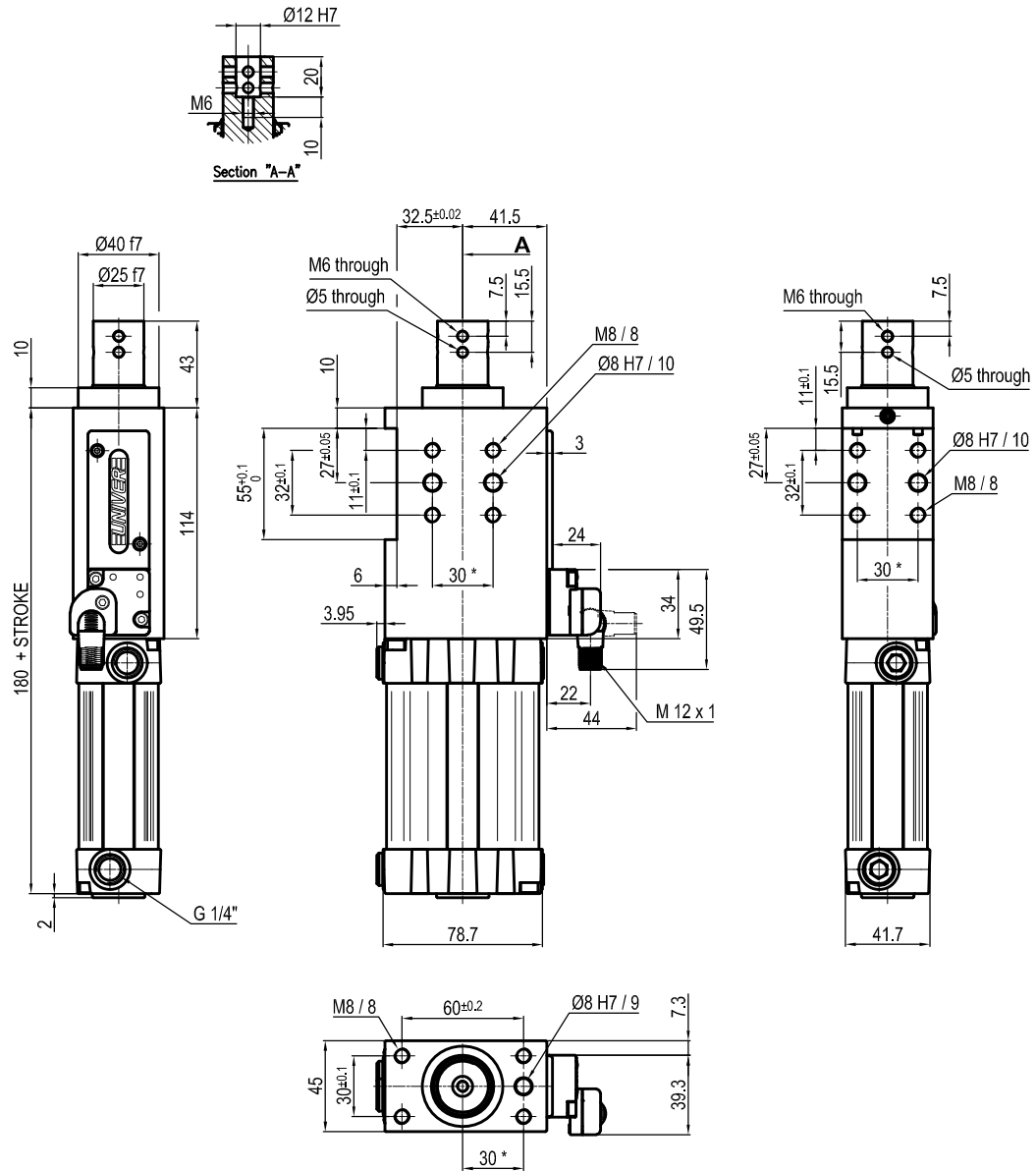
 IP code: **IP 65**

Pneumatic ports on both sides

*: TOLERANCE BETWEEN DOWELS ± 0.02, BETWEEN SCREW HOLES ± 0.1

Subject to technical modifications without notice

ULP50__IXK0



Bore Ø	Max. pull force 0,5 MPa	Max. push force 0,5 MPa	Max. torque 6 Nm	Max. deflection moment 5,5 Nm	Weight
50 mm	860 N	960 N	$\pm 0,06^\circ$	$\pm 0,03^\circ$	2,3 Kg

 Min./Max. operating pressure: **0,4 / 0,6 MPa**

 Operating temperature: **$5^\circ \pm 45^\circ \text{ C}$**

 Strokes in mm.: **15 - 25 - 40 - 50 - 60**

 Electronic sensor with M12 swivel connector, from 0° to 90° , in steps of 10°

 Supply voltage: $10 \div 30 \text{ Vdc}$

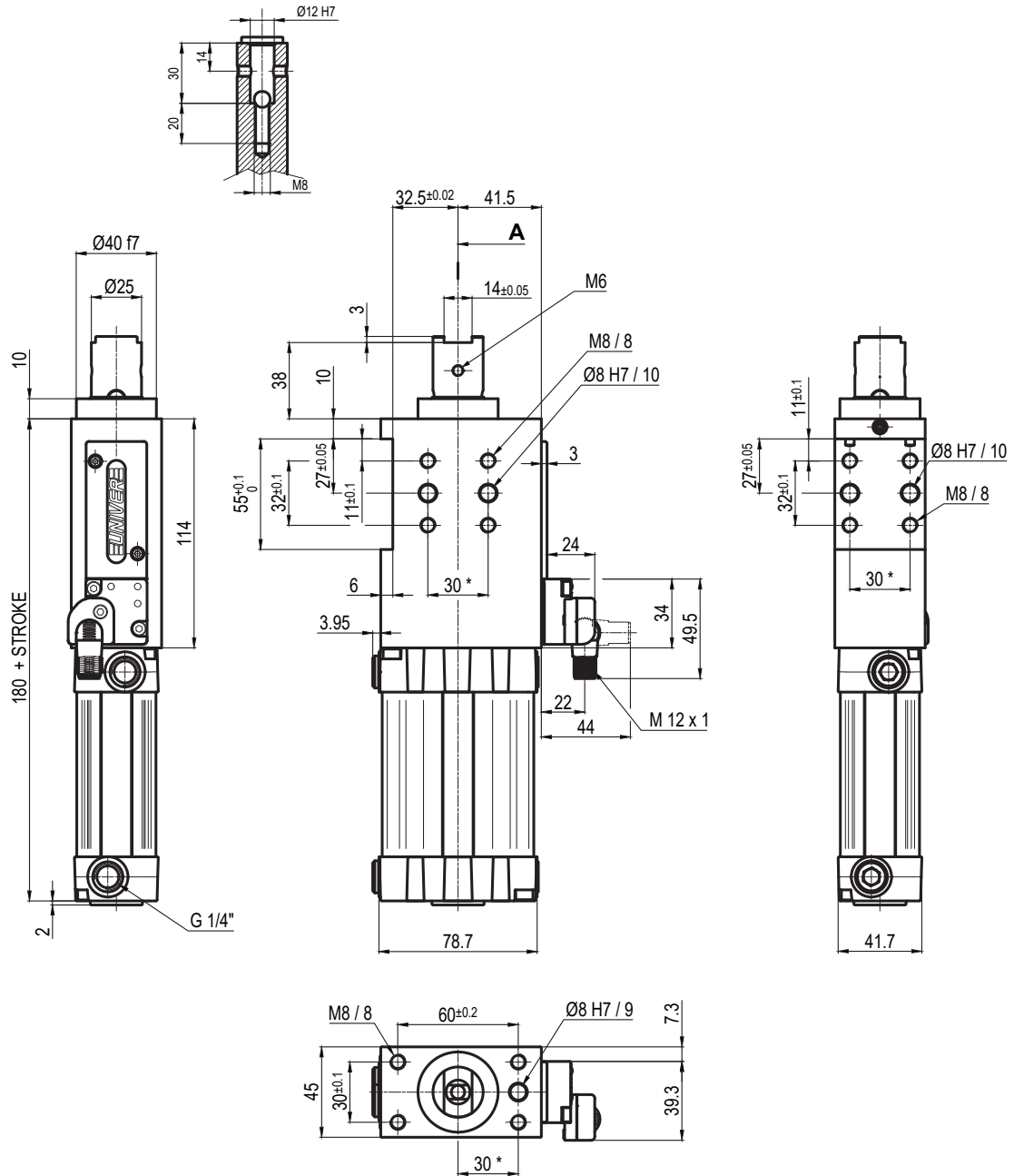
 IP code: **IP 65**

Pneumatic ports on both sides

 * : TOLERANCE BETWEEN DOWELS ± 0.02 , BETWEEN SCREW HOLES ± 0.1

Subject to technical modifications without notice

ULP50__LXK0



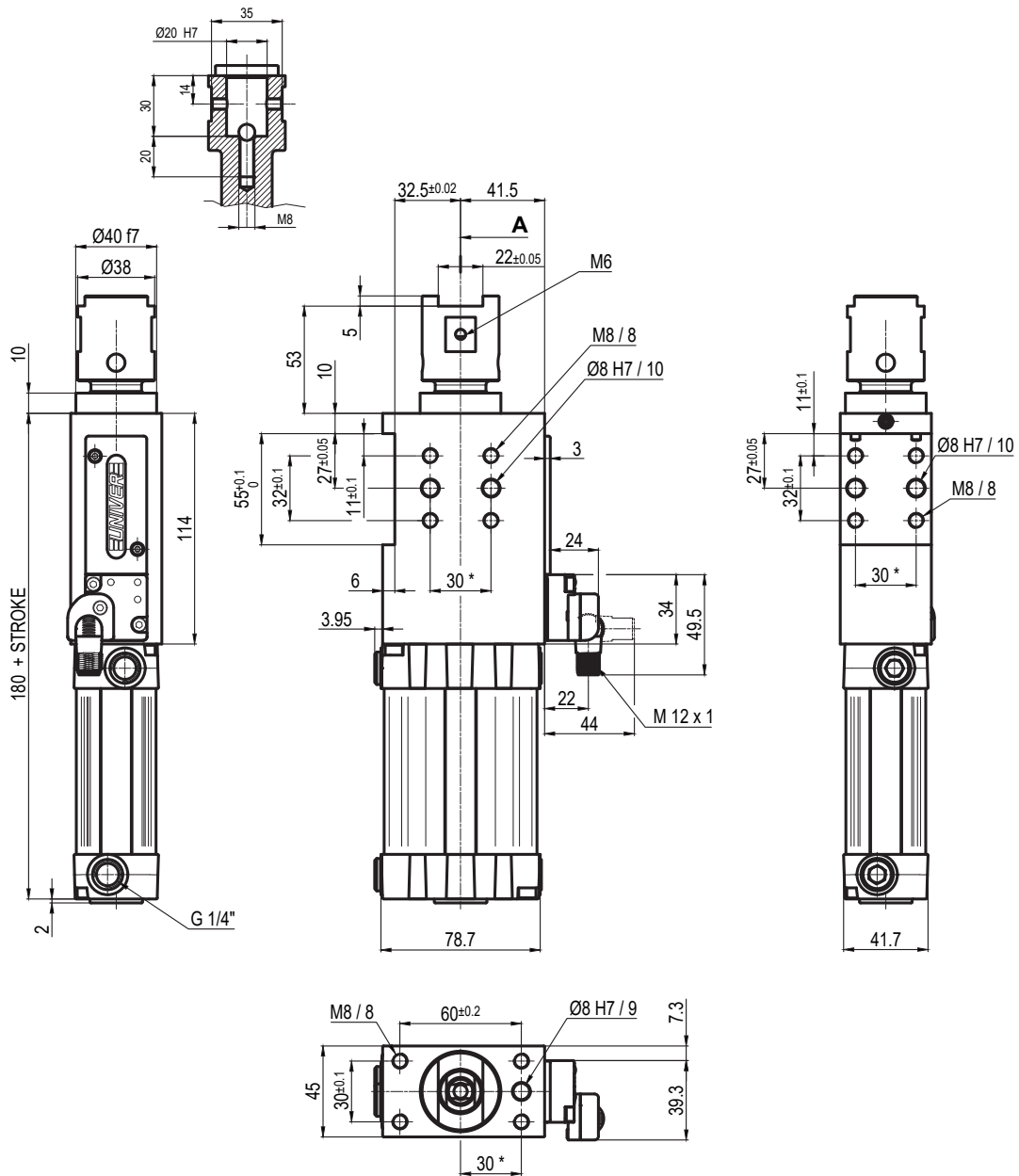
Bore Ø	Max. pull force 0,5 MPa	Max. push force 0,5 MPa	Max. torque 6 Nm	Max. deflection moment 5,5 Nm	Weight
50 mm	860 N	960 N	± 0,06°	± 0,03°	2,3 Kg

Min./Max. operating pressure: **0,4 / 0,6 MPa**
 Operating temperature: **5°± 45° C**
 Strokes in mm.: **15 - 25 - 40 - 50 - 60**
 Electronic sensor with M12 swivel connector, from 0° to 90°,
 in steps of 10°
 Supply voltage: 10 ÷ 30 Vdc
 IP code: **IP 65**
 Pneumatic ports on both sides

* : TOLERANCE BETWEEN DOWELS ± 0.02, BETWEEN SCREW HOLES ± 0.1

Subject to technical modifications without notice

ULP50__MXK0



Bore Ø	Max. pull force 0,5 MPa	Max. push force 0,5 MPa	Max. torque 6 Nm	Max. deflection moment 5,5 Nm	Weight
50 mm	860 N	960 N	± 0,06°	± 0,03°	2,3 Kg

 Min./Max. operating pressure: **0,4 / 0,6 MPa**

 Operating temperature: **5° ± 45° C**

 Strokes in mm.: **15 - 25 - 40 - 50 - 60**

 Electronic sensor with M12 swivel connector, from 0° to 90°,
in steps of 10°

Supply voltage: 10 ÷ 30 Vdc

 IP code: **IP 65**

Pneumatic ports on both sides

*: TOLERANCE BETWEEN DOWELS ± 0.02, BETWEEN SCREW HOLES ± 0.1

Subject to technical modifications without notice