

# ULM50

Unità di centraggio pneumatica **UNICLAMP**  
con azionamento manuale, singola asta, doppia  
guida interna



U	L	M	5	0	0	4	0	C	X	K	0
1	2	3	4				5	6	7	8	

<b>1</b> Serie	<b>2</b> Versione	<b>3</b> Taglia
----------------	-------------------	-----------------

**UL** = Unità di centraggio UNICLAMP

**M** = Pneumatica con azionamento manuale, singola asta, doppia guida interna

**50** = Ø 50 mm

<b>4</b> Corsa	<b>5</b> Terminale asta	<b>6</b> Orientamento asta
----------------	-------------------------	----------------------------

**015** = 15 mm  
**025** = 25 mm  
**040** = 40 mm  
**050** = 50 mm  
**060** = 60 mm

**A** = Asta per centraggi dislocati  
**B** = Asta con impronta a chiavetta  
**C** = Asta con impronta a chiavetta a croce, Ø interno 16 mm  
**D** = Asta per centraggi dislocati con fori spina maggiorati  
**E** = Asta con impronta chiavetta a croce, Ø interno 10 mm  
**F** = Asta con sede fissaggio laterale  
**H** = Asta con terminale piatto, Ø interno 10 mm  
**I** = Asta con terminale piatto, Ø interno 12 mm  
**L** = Asta con Ø interno 12 mm compatibile con CNOMO standard  
**M** = Asta con Ø interno 20 mm compatibile con CNOMO standard

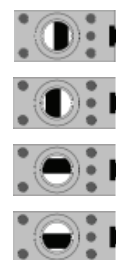
**X** = Simmetrico

**E\*** = Est

**O\*** = Ovest

**N\*** = Nord

**S\*** = Sud



**\*Solo con terminale asta A o D**

<b>7</b> Sensore	<b>8</b> Revisione prodotto
------------------	-----------------------------

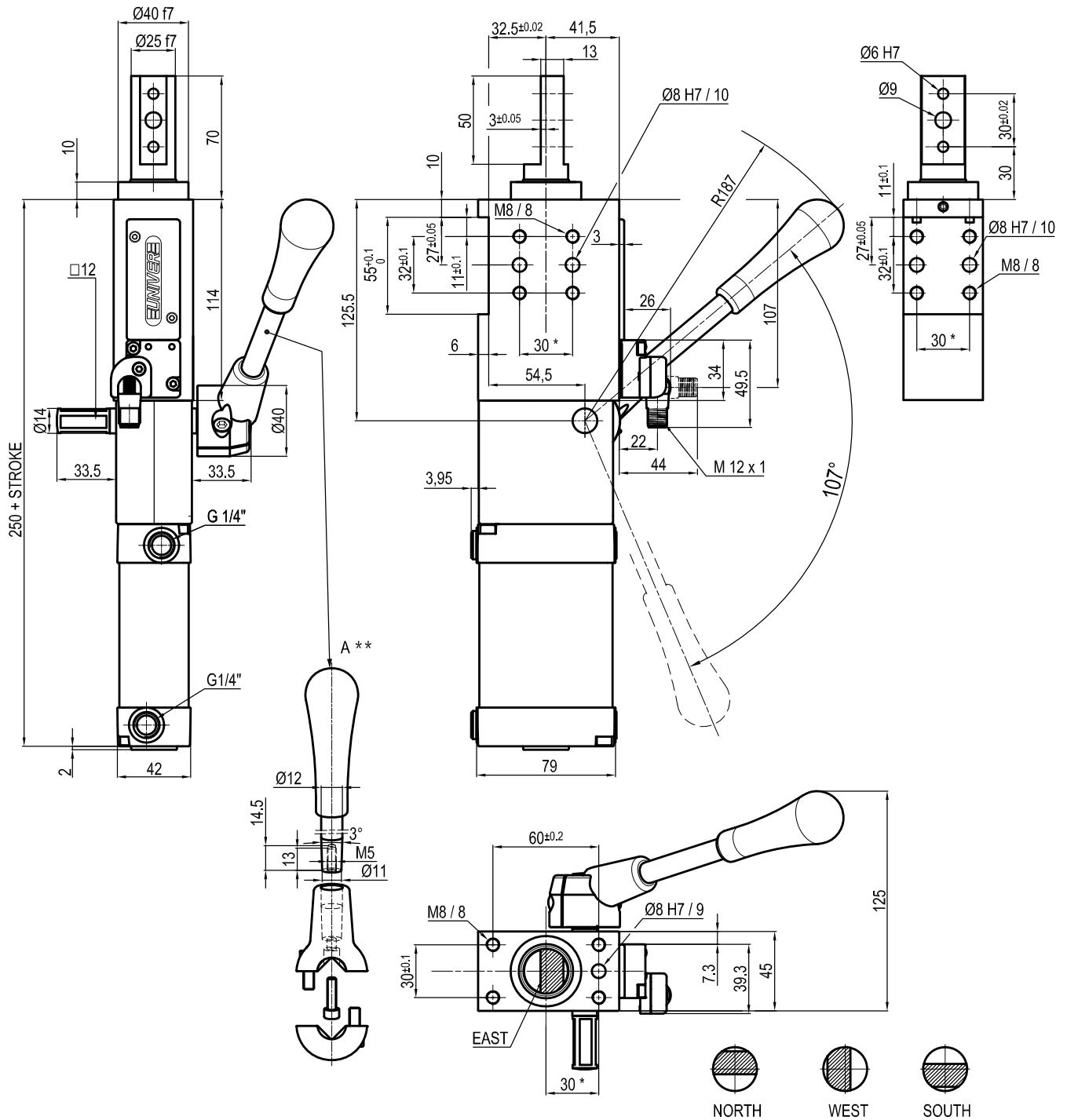
**N** = Senza sensore (con piastra di chiusura)

**D** = Sensore pneumatico

**K** = Sensore elettronico PNP (ottico) (DF-K)

Assegnato da UNIVER

## ULM50 \_\_ \_A\_K0



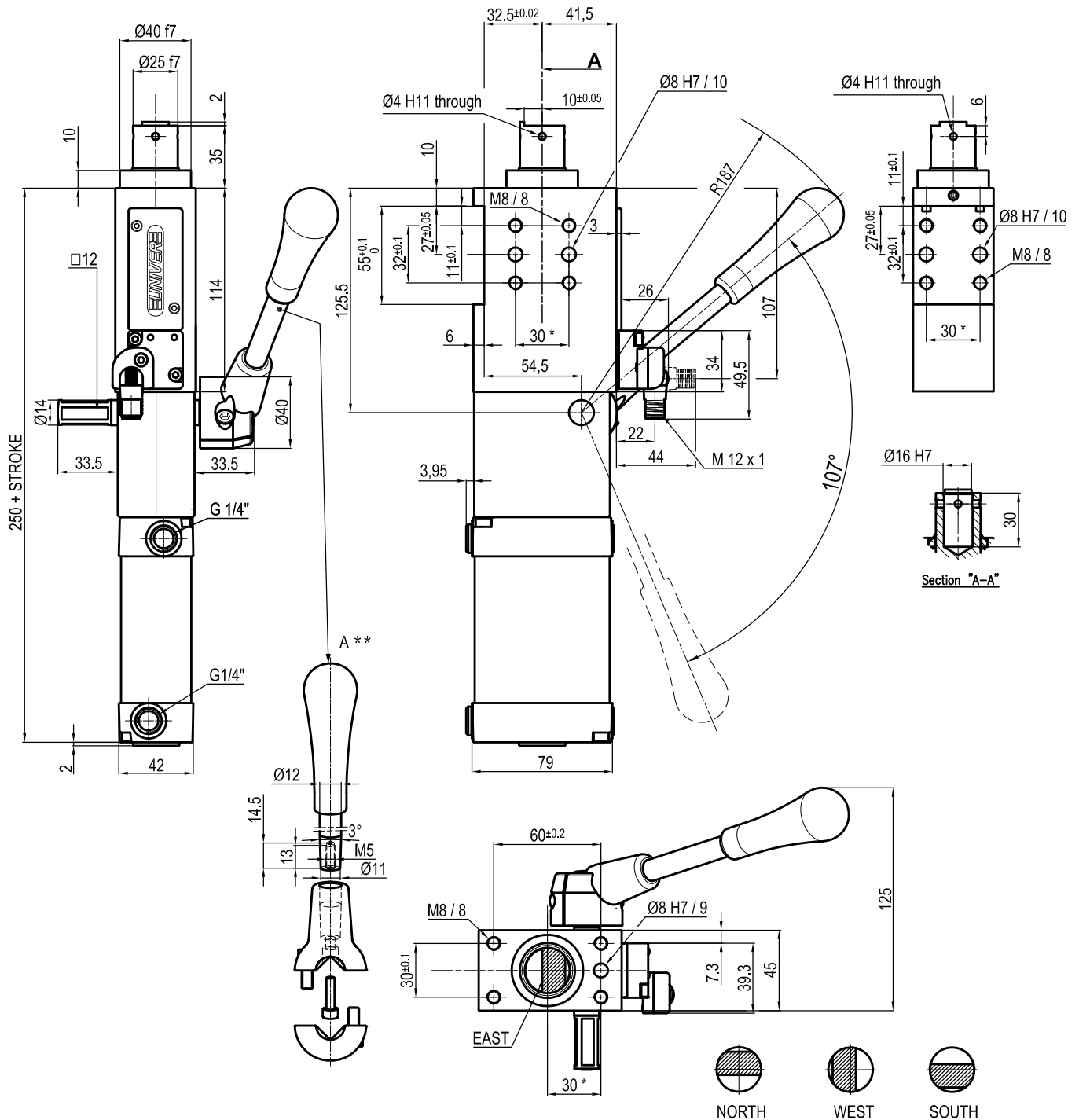
Bore Ø	Max. pull force 0,5 MPa	Max. push force 0,5 MPa	Max. torque 6 Nm	Max. deflection moment 7,5 Nm	Weight
50 mm	560 N	615 N	± 0,06°	± 0,03°	3,4 Kg

Min./Max. operating pressure: **0,4 / 0,6 MPa**  
 Operating temperature: **5° ± 45° C**  
 Strokes in mm.: **15 - 25 - 40 - 50 - 60**  
 With hand lever  
 Electronic sensor with M12 swivel connector, from 0° to 90°,  
 in steps of 10°  
 Supply voltage: **10 ÷ 30 Vdc**  
 IP code: **IP 65**  
 Pneumatic ports on both sides

\* : TOLERANCE BETWEEN DOWELS ± 0,02, BETWEEN SCREW HOLES ± 0,1  
 \*\* : DIMENSIONS TO BE RESPECTED IN CASE OTHER MANUAL LEVERS ARE USED

Subject to technical modifications without notice

## ULM50\_\_BXK0



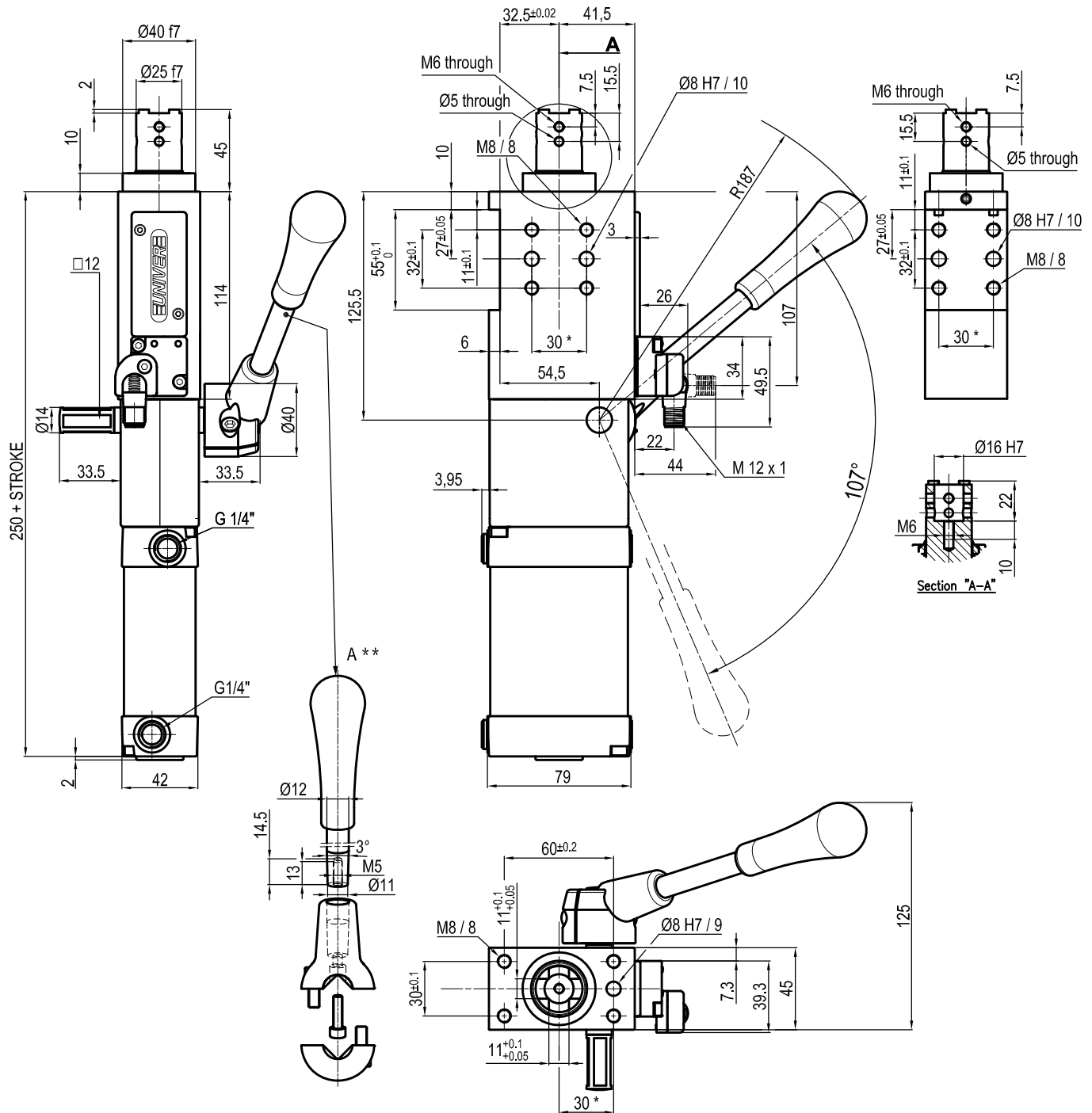
Bore Ø	Max. pull force 0,5 MPa	Max. push force 0,5 MPa	Max. torque 6 Nm	Max. deflection moment 7,5 Nm	Weight
50 mm	560 N	615 N	± 0,06°	± 0,03°	3,4 Kg

Min./Max. operating pressure: **0,4 / 0,6 MPa**  
 Operating temperature: **5° ± 45° C**  
 Strokes in mm.: **15 - 25 - 40 - 50 - 60**  
 With hand lever  
 Electronic sensor with M12 swivel connector, from 0° to 90°,  
 in steps of 10°  
 Supply voltage: **10 ÷ 30 Vdc**  
 IP code: **IP 65**  
 Pneumatic ports on both sides

\* : TOLERANCE BETWEEN DOWELS ± 0,02, BETWEEN SCREW HOLES ± 0,1  
 \*\* : DIMENSIONS TO BE RESPECTED IN CASE OTHER MANUAL LEVERS ARE USED

Subject to technical modifications without notice

## ULM50\_\_CXK0



Bore Ø	Max. pull force 0,5 MPa	Max. push force 0,5 MPa	Max. torque 6 Nm	Max. deflection moment 7,5 Nm	Weight
50 mm	560 N	615 N	± 0,06°	± 0,03°	3,4 Kg

 Min./Max. operating pressure: **0,4 / 0,6 MPa**

 Operating temperature: **5° ± 45° C**

 Strokes in mm.: **15 - 25 - 40 - 50 - 60**

With hand lever

Electronic sensor with M12 swivel connector, from 0° to 90°, in steps of 10°

 Supply voltage: **10 ÷ 30 Vdc**

 IP code: **IP 65**

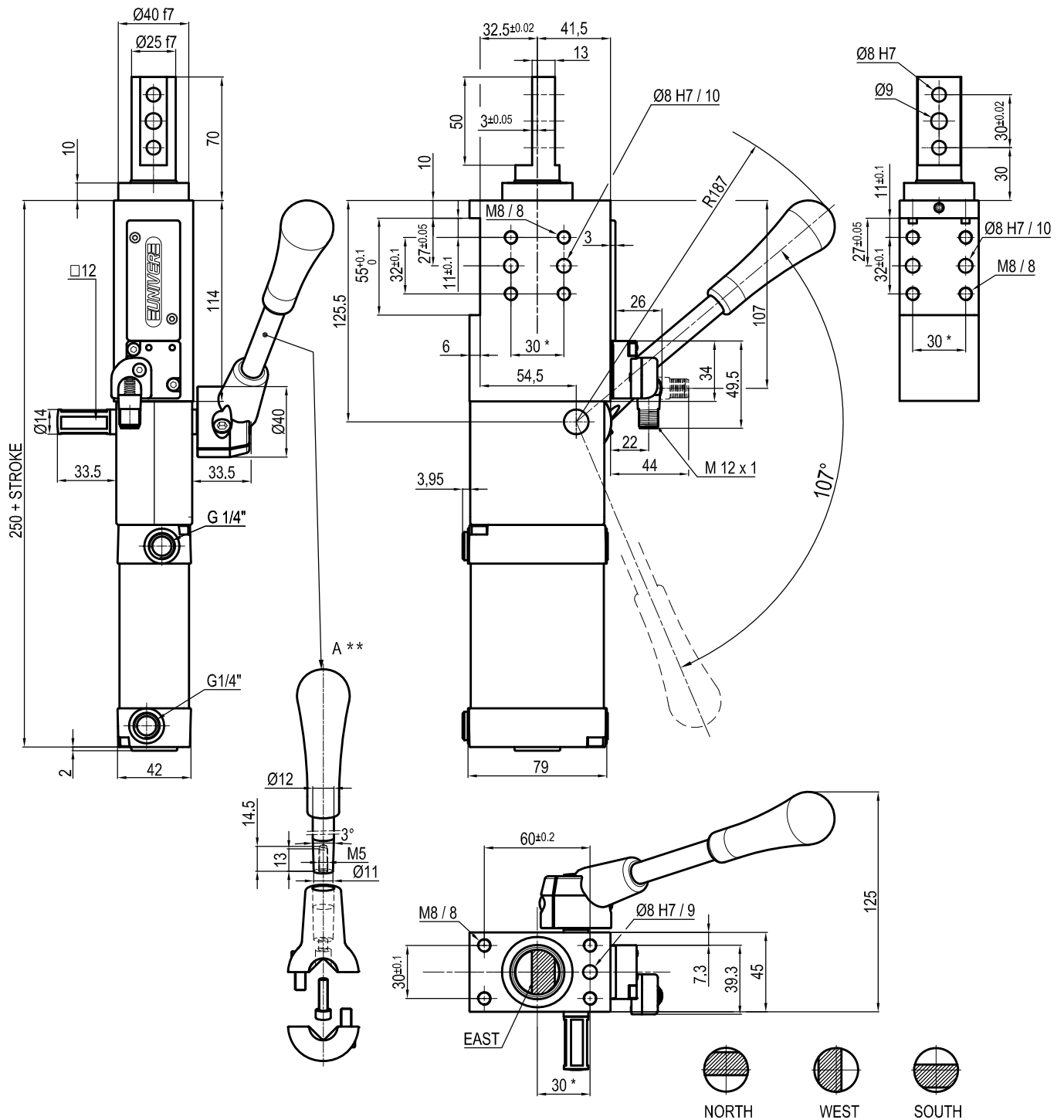
Pneumatic ports on both sides

\*: TOLERANCE BETWEEN DOWELS ± 0,02, BETWEEN SCREW HOLES ± 0,1

\*\*: DIMENSIONS TO BE RESPECTED IN CASE OTHER MANUAL LEVERS ARE USED

Subject to technical modifications without notice

## ULM50\_\_D\_K0



Bore Ø	Max. pull force 0,5 MPa	Max. push force 0,5 MPa	Max. torque 6 Nm	Max. deflection moment 7,5 Nm	Weight
50 mm	560 N	615 N	± 0,06°	± 0,03°	3,4 Kg

 Min./Max. operating pressure: **0,4 / 0,6 MPa**

 Operating temperature: **5° ± 45° C**

 Strokes in mm.: **15 - 25 - 40 - 50 - 60**

With hand lever

Electronic sensor with M12 swivel connector, from 0° to 90°, in steps of 10°

 Supply voltage: **10 ± 30 Vdc**

 IP code: **IP 65**

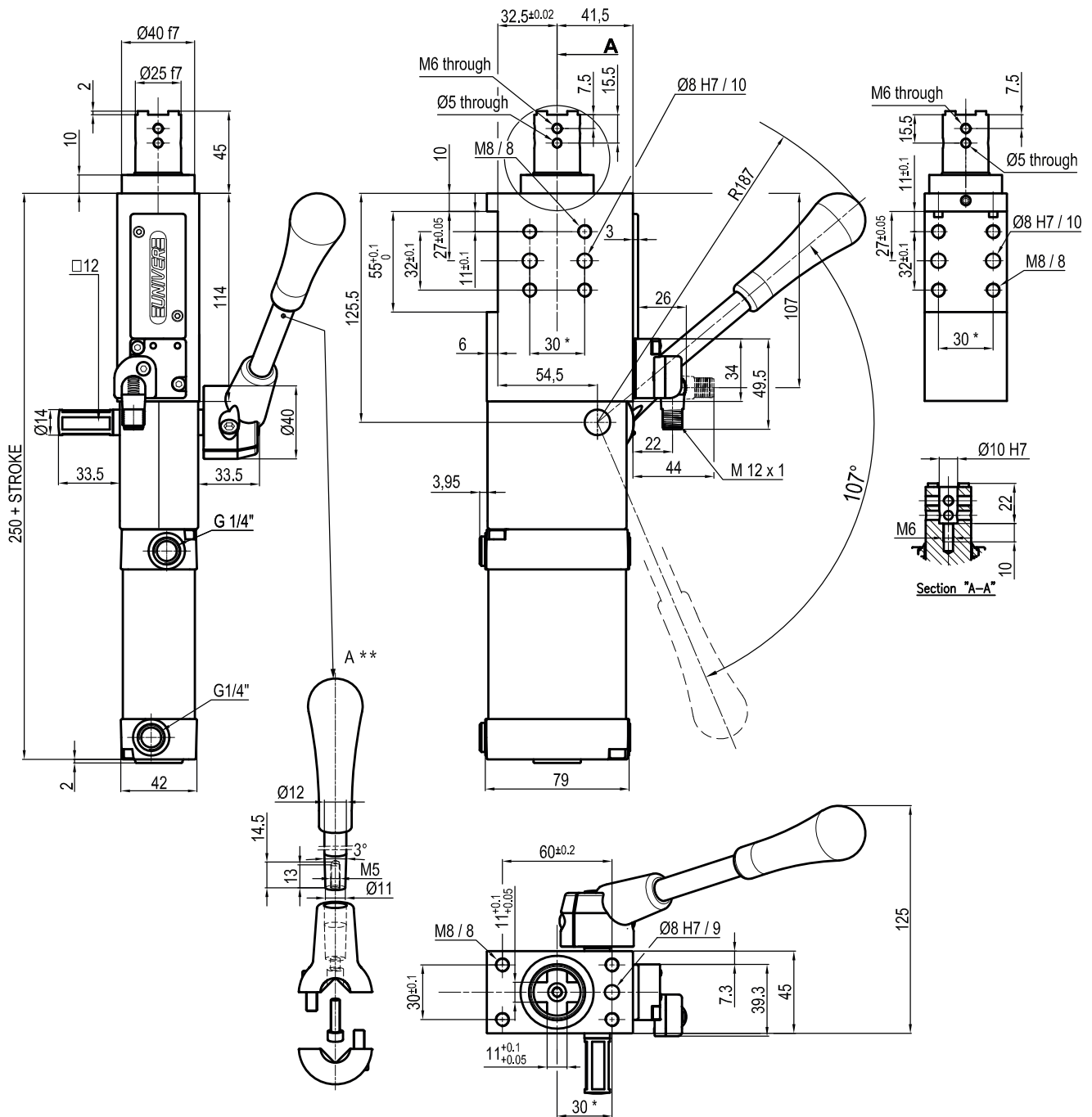
Pneumatic ports on both sides

\*: TOLERANCE BETWEEN DOWELS ± 0,02, BETWEEN SCREW HOLES ± 0,1

\*\*: DIMENSIONS TO BE RESPECTED IN CASE OTHER MANUAL LEVERS ARE USED

Subject to technical modifications without notice

## ULM50\_\_EXK0



Bore Ø	Max. pull force 0,5 MPa	Max. push force 0,5 MPa	Max. torque 6 Nm	Max. deflection moment 7,5 Nm	Weight
50 mm	560 N	615 N	± 0,06°	± 0,03°	3,4 Kg

 Min./Max. operating pressure: **0,4 / 0,6 MPa**

 Operating temperature: **5° ± 45° C**

 Strokes in mm.: **15 - 25 - 40 - 50 - 60**

With hand lever

Electronic sensor with M12 swivel connector, from 0° to 90°, in steps of 10°

 Supply voltage: **10 ÷ 30 Vdc**

 IP code: **IP 65**

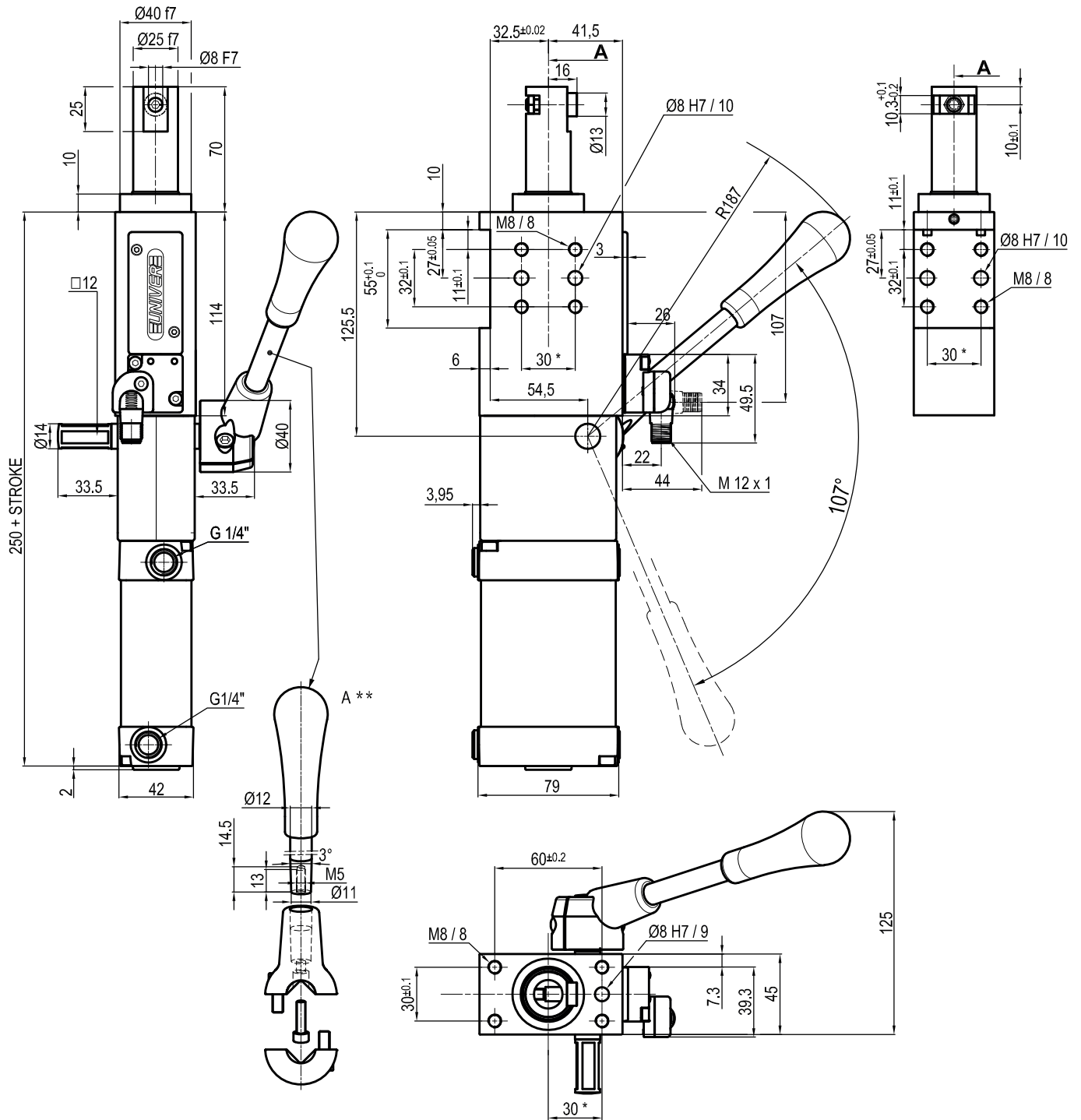
Pneumatic ports on both sides

\*: TOLERANCE BETWEEN DOWELS ± 0,02, BETWEEN SCREW HOLES ± 0,1

\*\*: DIMENSIONS TO BE RESPECTED IN CASE OTHER MANUAL LEVERS ARE USED

Subject to technical modifications without notice

## ULM50\_\_FXK0



Bore Ø	Max. pull force 0,5 MPa	Max. push force 0,5 MPa	Max. torque 6 Nm	Max. deflection moment 7,5 Nm	Weight
50 mm	560 N	615 N	± 0,06°	± 0,03°	3,4 Kg

 Min./Max. operating pressure: **0,4 / 0,6 MPa**

 Operating temperature: **5° ± 45° C**

 Strokes in mm.: **15 - 25 - 40 - 50 - 60**

With hand lever

Electronic sensor with M12 swivel connector, from 0° to 90°, in steps of 10°

 Supply voltage: **10 ± 30 Vdc**

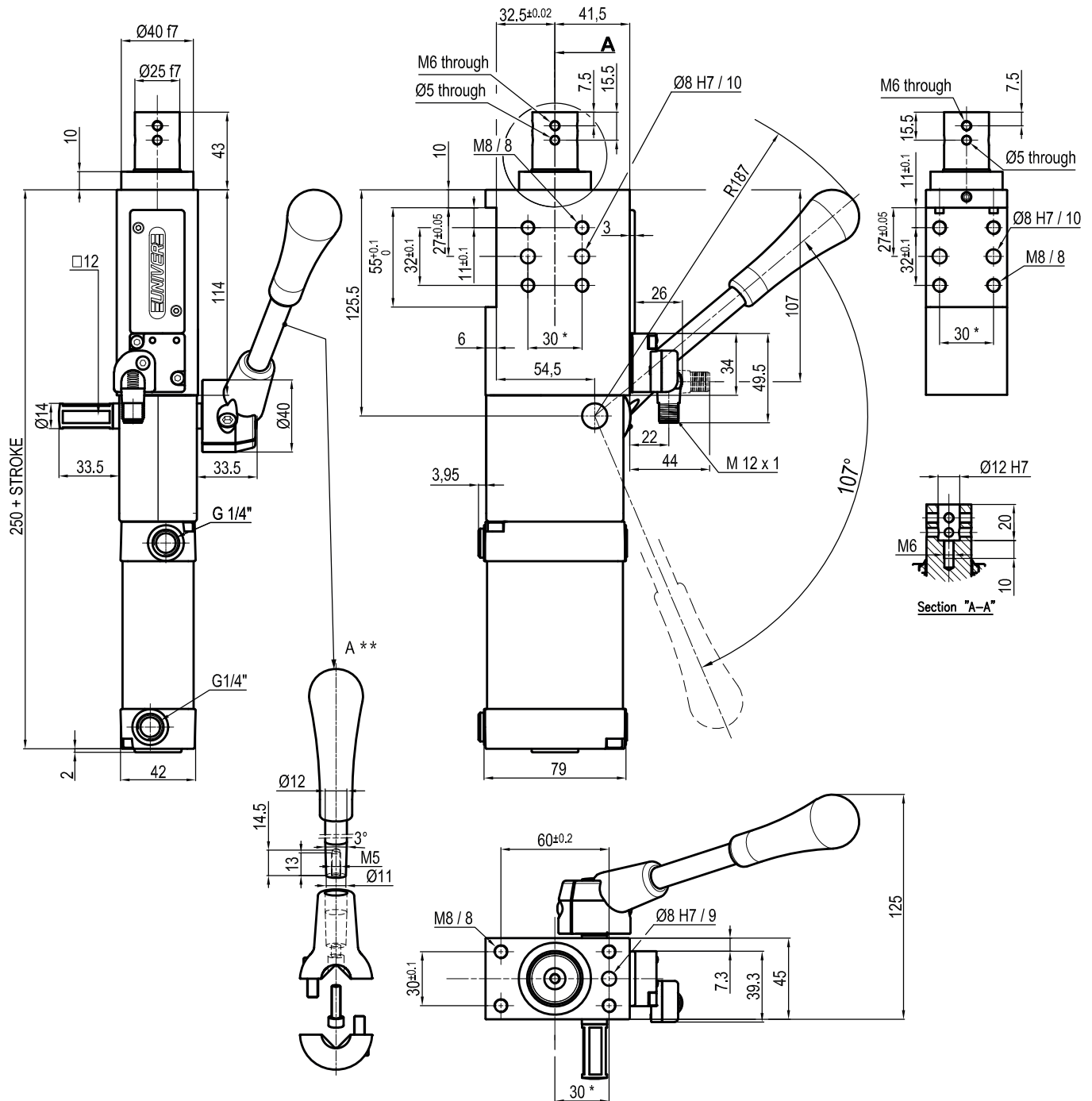
 IP code: **IP 65**

Pneumatic ports on both sides

\* : TOLERANCE BETWEEN DOWELS ± 0,02, BETWEEN SCREW HOLES ± 0,1  
 \*\* : DIMENSIONS TO BE RESPECTED IN CASE OTHER MANUAL LEVERS ARE USED

Subject to technical modifications without notice

## ULM50\_\_IXK0



Bore Ø	Max. pull force 0,5 MPa	Max. push force 0,5 MPa	Max. torque 6 Nm	Max. deflection moment 7,5 Nm	Weight
50 mm	560 N	615 N	± 0,06°	± 0,03°	3,4 Kg

 Min./Max. operating pressure: **0,4 / 0,6 MPa**

 Operating temperature: **5° ± 45° C**

 Strokes in mm.: **15 - 25 - 40 - 50 - 60**

With hand lever

Electronic sensor with M12 swivel connector, from 0° to 90°, in steps of 10°

 Supply voltage: **10 ÷ 30 Vdc**

 IP code: **IP 65**

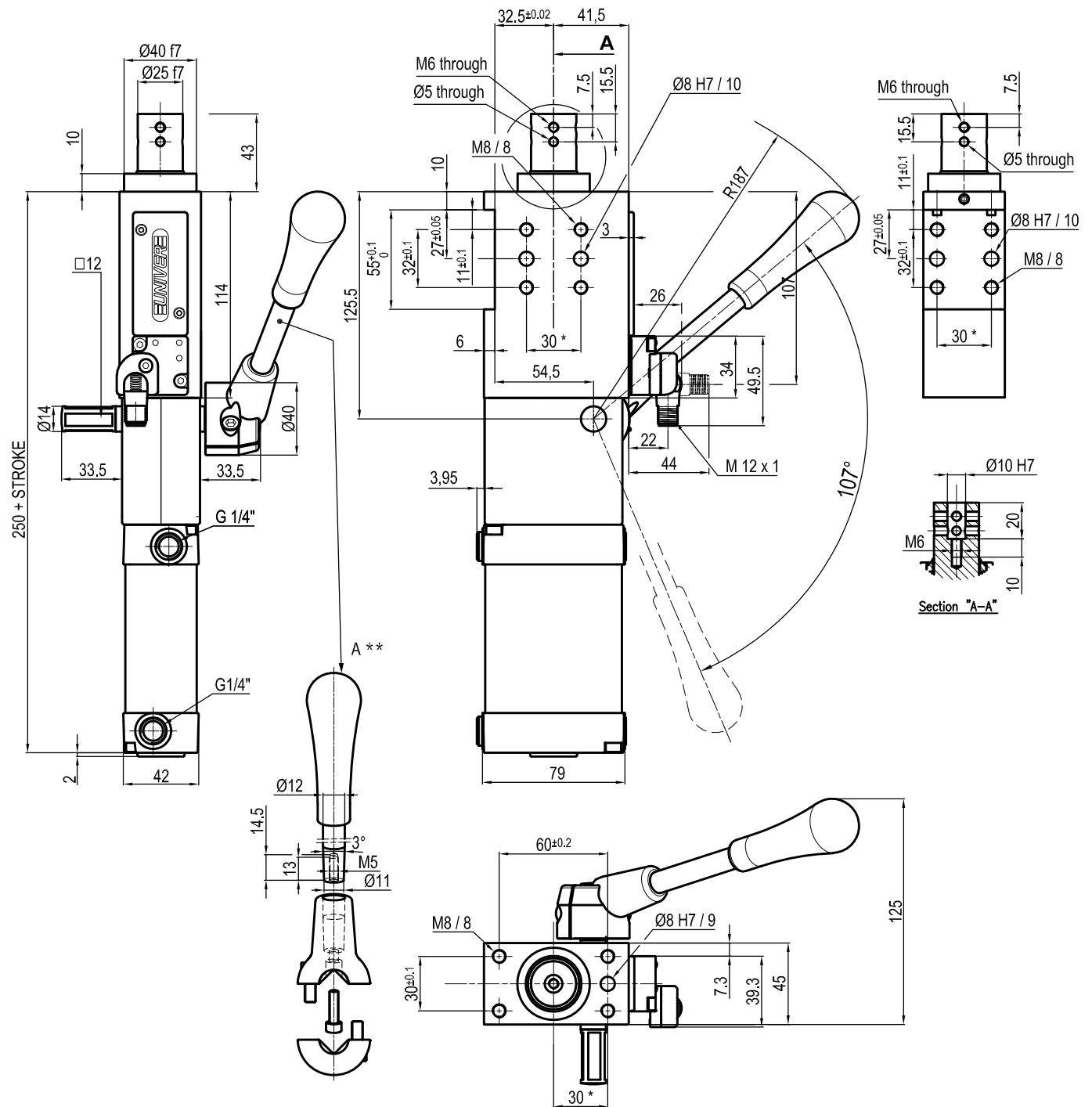
Pneumatic ports on both sides

\* : TOLERANCE BETWEEN DOWELS ± 0,02, BETWEEN SCREW HOLES ± 0,1  
 \*\* : DIMENSIONS TO BE RESPECTED IN CASE OTHER MANUAL LEVERS ARE USED

Subject to technical modifications without notice



## ULM50\_\_HXK0



Bore Ø	Max. pull force 0,5 MPa	Max. push force 0,5 MPa	Max. torque 6 Nm	Max. deflection moment 7,5 Nm	Weight
50 mm	560 N	615 N	± 0,06°	± 0,03°	3,4 Kg

 Min./Max. operating pressure: **0,4 / 0,6 MPa**

 Operating temperature: **5° ± 45° C**

 Strokes in mm.: **15 - 25 - 40 - 50 - 60**

With hand lever

Electronic sensor with M12 swivel connector, from 0° to 90°, in steps of 10°

 Supply voltage: **10 ÷ 30 Vdc**

 IP code: **IP 65**

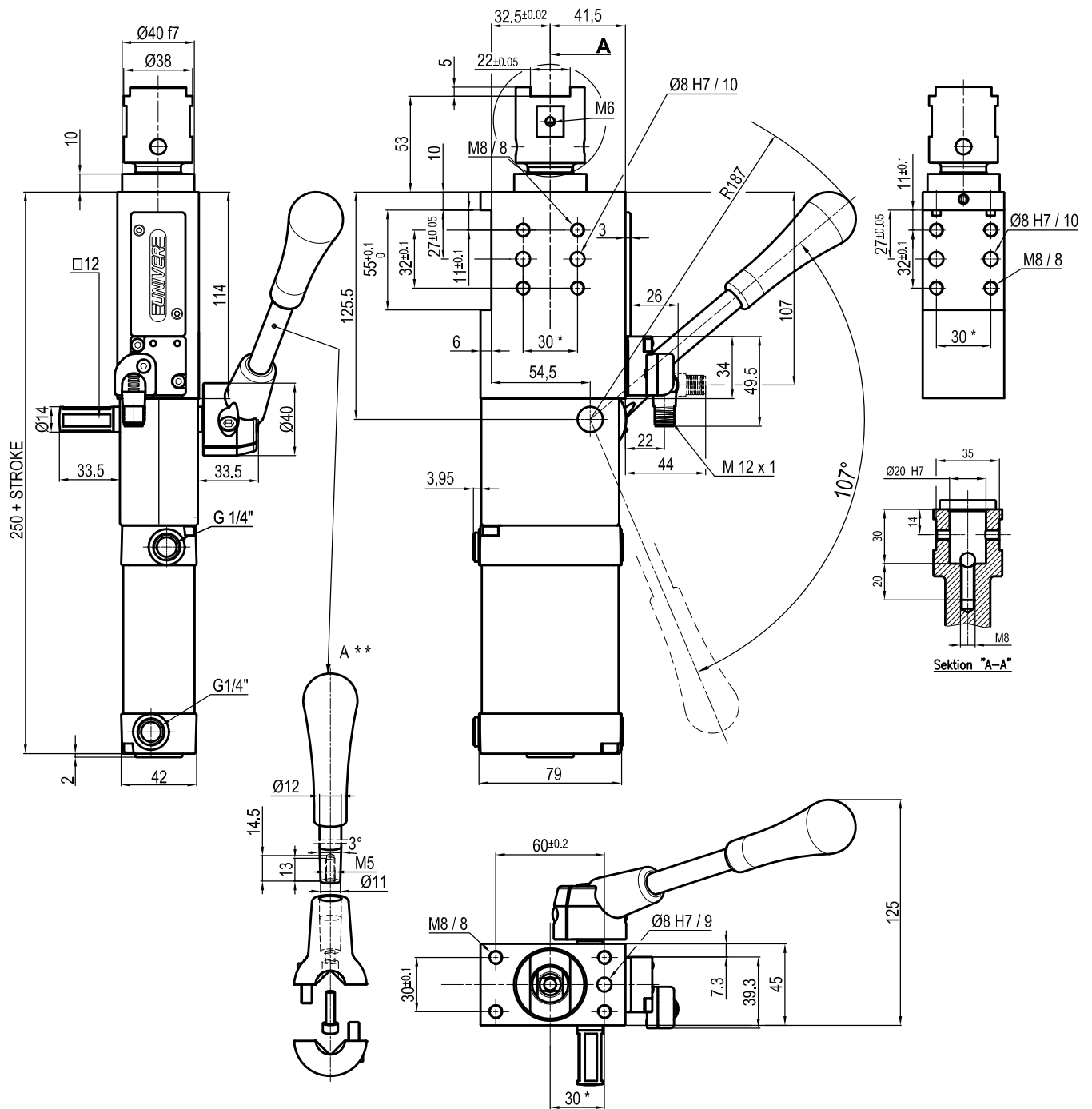
Pneumatic ports on both sides

\* : TOLERANCE BETWEEN DOWELS ± 0,02, BETWEEN SCREW HOLES ± 0,1  
 \*\* : DIMENSIONS TO BE RESPECTED IN CASE OTHER MANUAL LEVERS ARE USED

Subject to technical modifications without notice



## ULM50\_\_MXK0



Bore Ø	Max. pull force 0,5 MPa	Max. push force 0,5 MPa	Max. torque 6 Nm	Max. deflection moment 7,5 Nm	Weight
50 mm	560 N	615 N	± 0,06°	± 0,03°	3,4 Kg

 Min./Max. operating pressure: **0,4 / 0,6 MPa**

 Operating temperature: **5°± 45° C**

 Strokes in mm.: **15 - 25 - 40 - 50 - 80**

With hand lever

Electronic sensor with M12 swivel connector, from 0° to 90°, in steps of 10°

 Supply voltage: **10 ± 30 Vdc**

 IP code: **IP 65**

Pneumatic ports on both sides

\* : TOLERANCE BETWEEN DOWELS ± 0,02, BETWEEN SCREW HOLES ± 0,1  
 \*\* : DIMENSIONS TO BE RESPECTED IN CASE OTHER MANUAL LEVERS ARE USED

Subject to technical modifications without notice