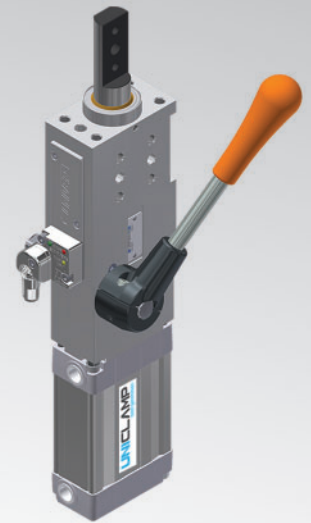


# ULM50

**UNICLAMP** Pneumatic retractable locating pin unit, with hand lever, single rod, double internal guide



U	L	M	5	0	0	4	0	C	X	K	0
1	2	3	4				5	6	7	8	

<b>1 Series</b>	<b>2 Version</b>	<b>3 Size</b>
-----------------	------------------	---------------

**UL** = UNICLAMP locating pin unit

**M** = With hand lever, single rod, double internal guide

**50** = Ø 50 mm

<b>4 Stroke</b>	<b>5 Rod end style</b>	<b>6 Rod orientation</b>
-----------------	------------------------	--------------------------

- 015** = 15 mm
- 025** = 25 mm
- 040** = 40 mm
- 050** = 50 mm
- 060** = 60 mm

- A** = Rod for off -set pins
- B** = Rod with profiled end
- C** = Rod with cross-profiled end inner Ø 16 mm
- D** = Rod for off -set pins with oversized dowel holes
- E** = Rod with cross-profiled end inner Ø 10 mm
- F** = Rod for side mounting
- H** = Rod with fl at end, inner Ø 10 mm
- I** = Rod with fl at end, inner Ø 12 mm
- L** = Rod with inner Ø 12 mm compatible with CNOMO standard
- M** = Rod with inner Ø 20 mm compatible with CNOMO standard

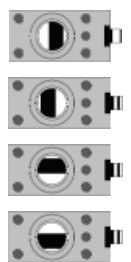
**X** = Symmetrical

**E\*** = East

**O\*** = West

**N\*** = North

**S\*** = South



\*Only with A and D rod end style

<b>7 Sensor</b>	<b>8 Product Revision</b>
-----------------	---------------------------

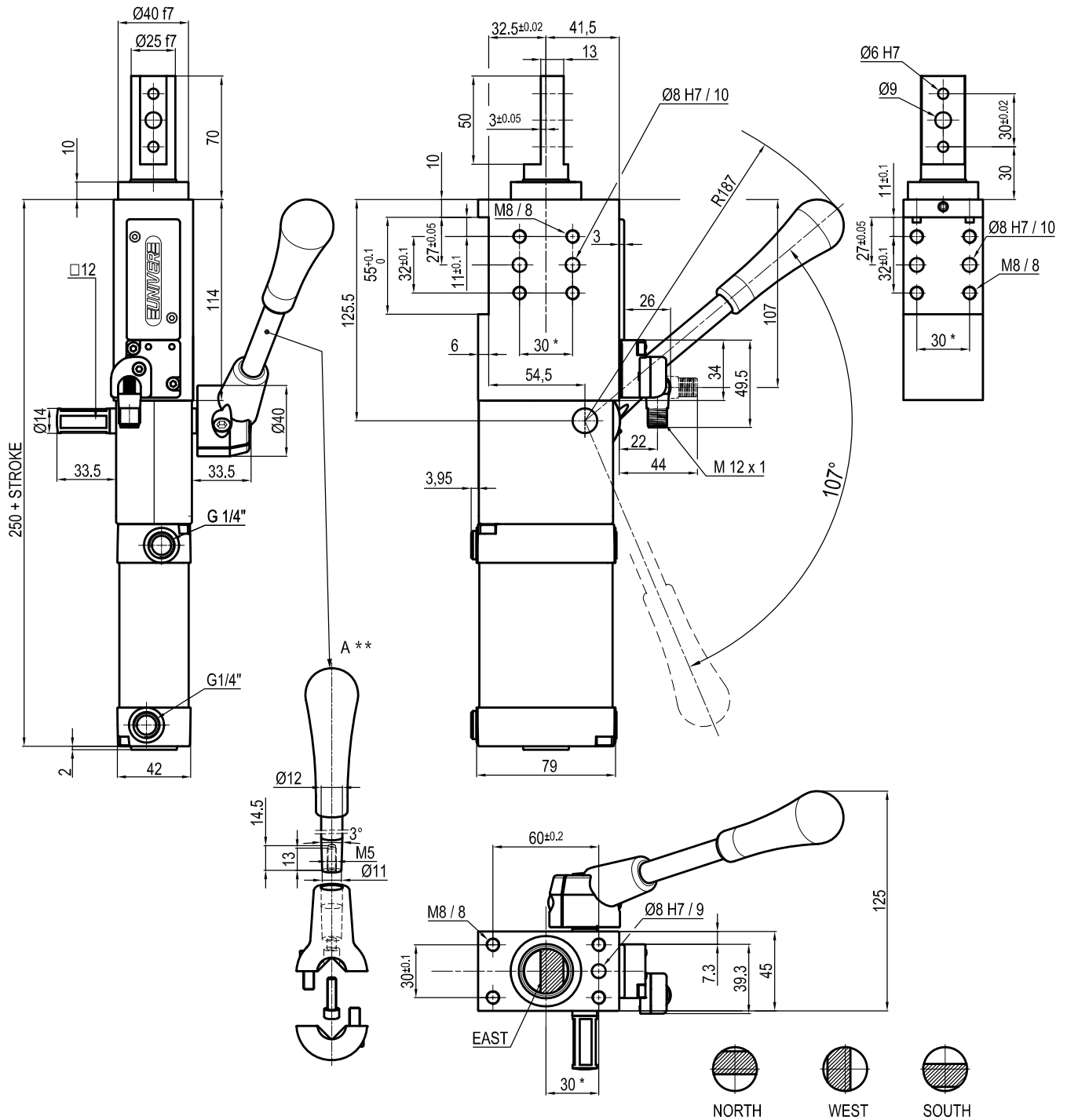
**N** = No sensor  
(with protection plate)

**D** = Pneumatic sensor

**K** = Electronic sensor PNP (optical)  
(DF-K)

Assigned by Univer

## ULM50 \_\_ \_A\_K0



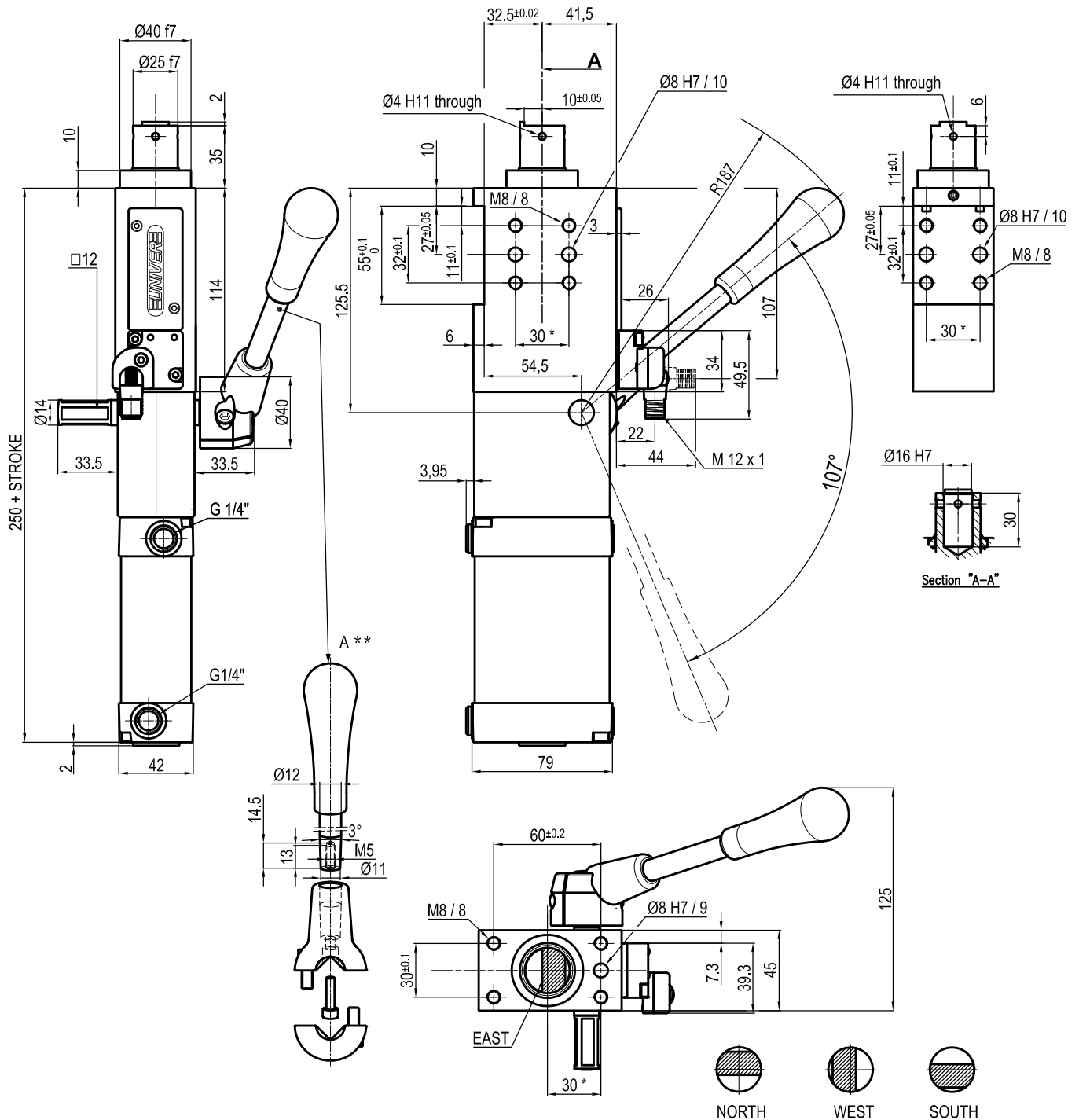
Bore Ø	Max. pull force 0,5 MPa	Max. push force 0,5 MPa	Max. torque 6 Nm	Max. deflection moment 7,5 Nm	Weight
50 mm	560 N	615 N	± 0,06°	± 0,03°	3,4 Kg

Min./Max. operating pressure: **0,4 / 0,6 MPa**  
 Operating temperature: **5°± 45° C**  
 Strokes in mm.: **15 - 25 - 40 - 50 - 60**  
 With hand lever  
 Electronic sensor with M12 swivel connector, from 0° to 90°,  
 in steps of 10°  
 Supply voltage: **10 ÷ 30 Vdc**  
 IP code: **IP 65**  
 Pneumatic ports on both sides

\*: TOLERANCE BETWEEN DOWELS ± 0,02, BETWEEN SCREW HOLES ± 0,1  
 \*\*: DIMENSIONS TO BE RESPECTED IN CASE OTHER MANUAL LEVERS ARE USED

Subject to technical modifications without notice

## ULM50\_\_BXK0



Bore Ø	Max. pull force 0,5 MPa	Max. push force 0,5 MPa	Max. torque 6 Nm	Max. deflection moment 7,5 Nm	Weight
50 mm	560 N	615 N	± 0,06°	± 0,03°	3,4 Kg

 Min./Max. operating pressure: **0,4 / 0,6 MPa**

 Operating temperature: **5°± 45° C**

 Strokes in mm.: **15 - 25 - 40 - 50 - 60**

With hand lever

Electronic sensor with M12 swivel connector, from 0° to 90°, in steps of 10°

 Supply voltage: **10 ÷ 30 Vdc**

 IP code: **IP 65**

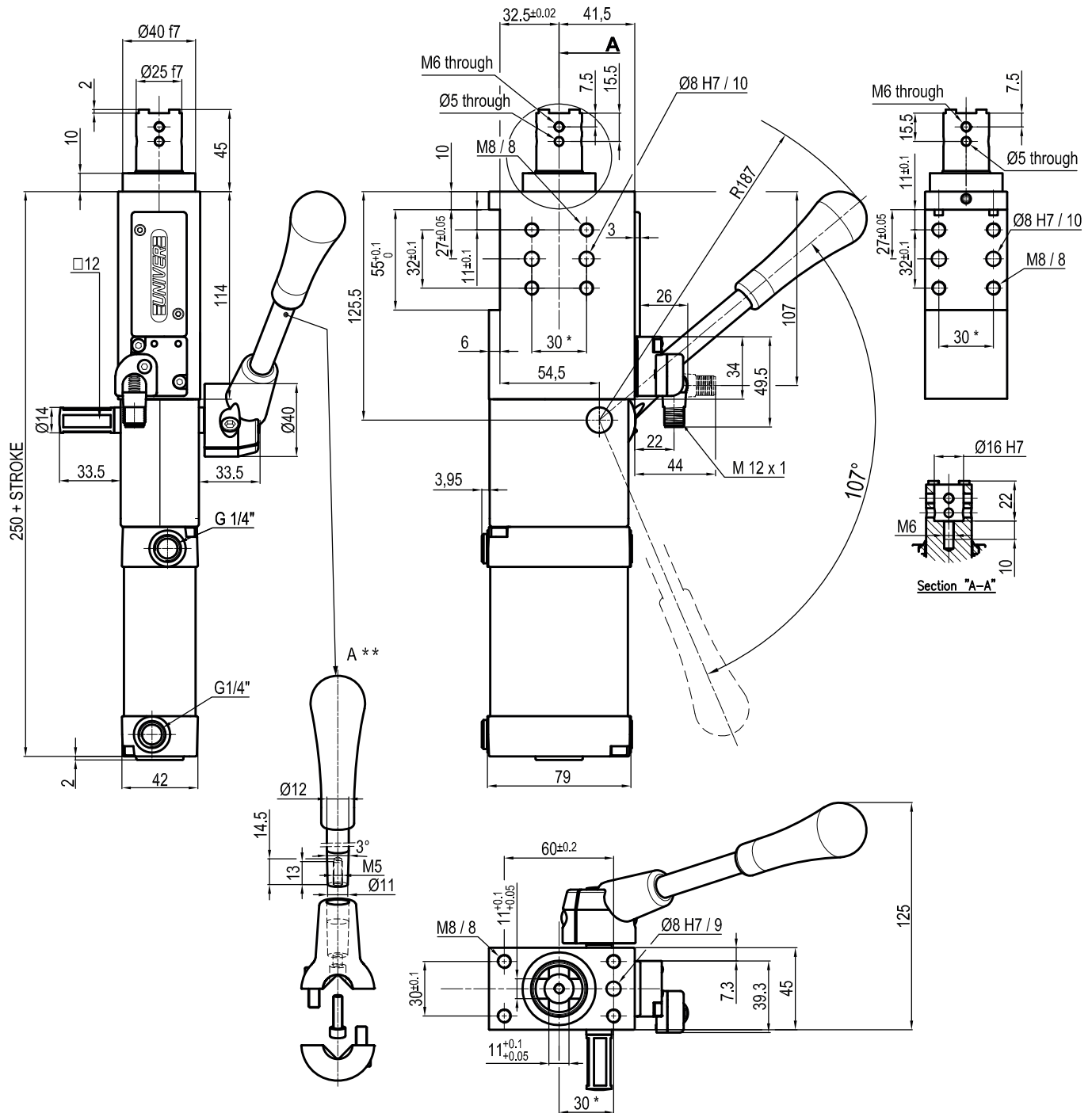
Pneumatic ports on both sides

\*: TOLERANCE BETWEEN DOWELS ± 0,02, BETWEEN SCREW HOLES ± 0,1

\*\*: DIMENSIONS TO BE RESPECTED IN CASE OTHER MANUAL LEVERS ARE USED

Subject to technical modifications without notice

## ULM50\_\_CXK0



Bore Ø	Max. pull force 0,5 MPa	Max. push force 0,5 MPa	Max. torque 6 Nm	Max. deflection moment 7,5 Nm	Weight
50 mm	560 N	615 N	± 0,06°	± 0,03°	3,4 Kg

 Min./Max. operating pressure: **0,4 / 0,6 MPa**

 Operating temperature: **5° ± 45° C**

 Strokes in mm.: **15 - 25 - 40 - 50 - 60**

With hand lever

Electronic sensor with M12 swivel connector, from 0° to 90°, in steps of 10°

 Supply voltage: **10 ÷ 30 Vdc**

 IP code: **IP 65**

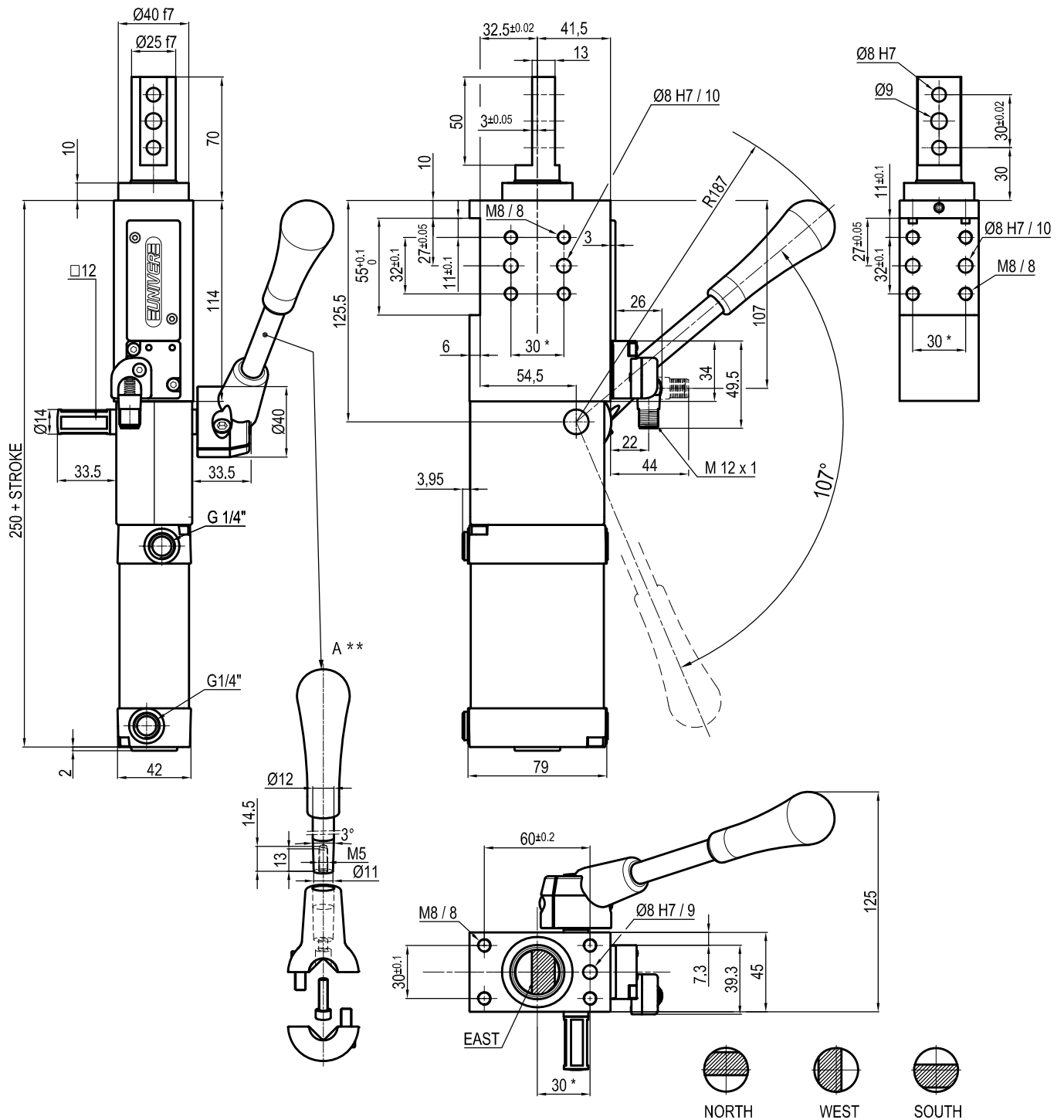
Pneumatic ports on both sides

\*: TOLERANCE BETWEEN DOWELS ± 0,02, BETWEEN SCREW HOLES ± 0,1

\*\*: DIMENSIONS TO BE RESPECTED IN CASE OTHER MANUAL LEVERS ARE USED

Subject to technical modifications without notice

## ULM50\_\_D\_K0



Bore Ø	Max. pull force 0,5 MPa	Max. push force 0,5 MPa	Max. torque 6 Nm	Max. deflection moment 7,5 Nm	Weight
50 mm	560 N	615 N	± 0,06°	± 0,03°	3,4 Kg

 Min./Max. operating pressure: **0,4 / 0,6 MPa**

 Operating temperature: **5° ± 45° C**

 Strokes in mm.: **15 - 25 - 40 - 50 - 60**

With hand lever

Electronic sensor with M12 swivel connector, from 0° to 90°, in steps of 10°

 Supply voltage: **10 ± 30 Vdc**

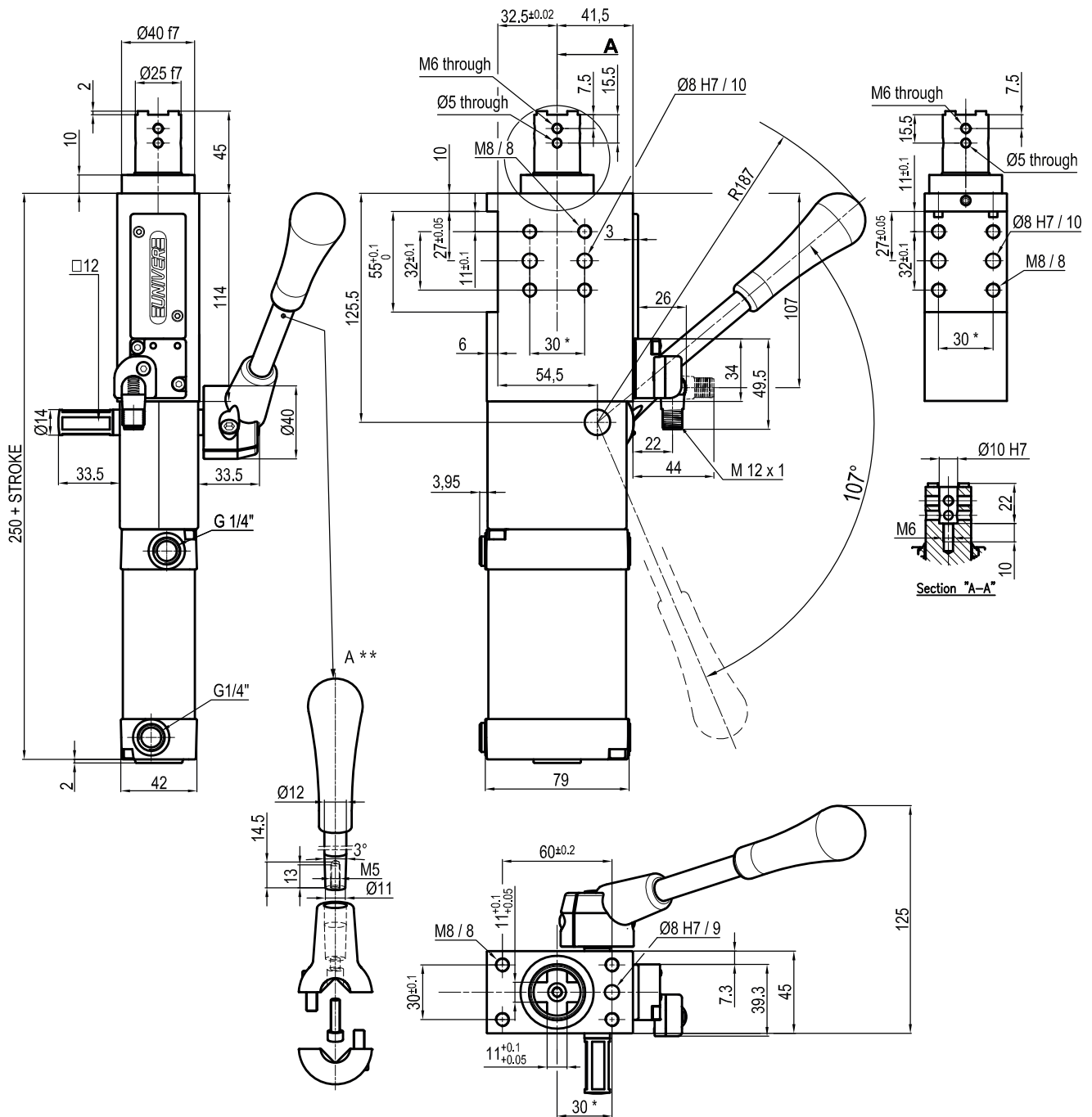
 IP code: **IP 65**

Pneumatic ports on both sides

\* : TOLERANCE BETWEEN DOWELS ± 0,02, BETWEEN SCREW HOLES ± 0,1  
 \*\* : DIMENSIONS TO BE RESPECTED IN CASE OTHER MANUAL LEVERS ARE USED

Subject to technical modifications without notice

## ULM50\_\_EXK0



Bore Ø	Max. pull force 0,5 MPa	Max. push force 0,5 MPa	Max. torque 6 Nm	Max. deflection moment 7,5 Nm	Weight
50 mm	560 N	615 N	± 0,06°	± 0,03°	3,4 Kg

 Min./Max. operating pressure: **0,4 / 0,6 MPa**

 Operating temperature: **5° ± 45° C**

 Strokes in mm.: **15 - 25 - 40 - 50 - 60**

With hand lever

Electronic sensor with M12 swivel connector, from 0° to 90°, in steps of 10°

 Supply voltage: **10 ± 30 Vdc**

 IP code: **IP 65**

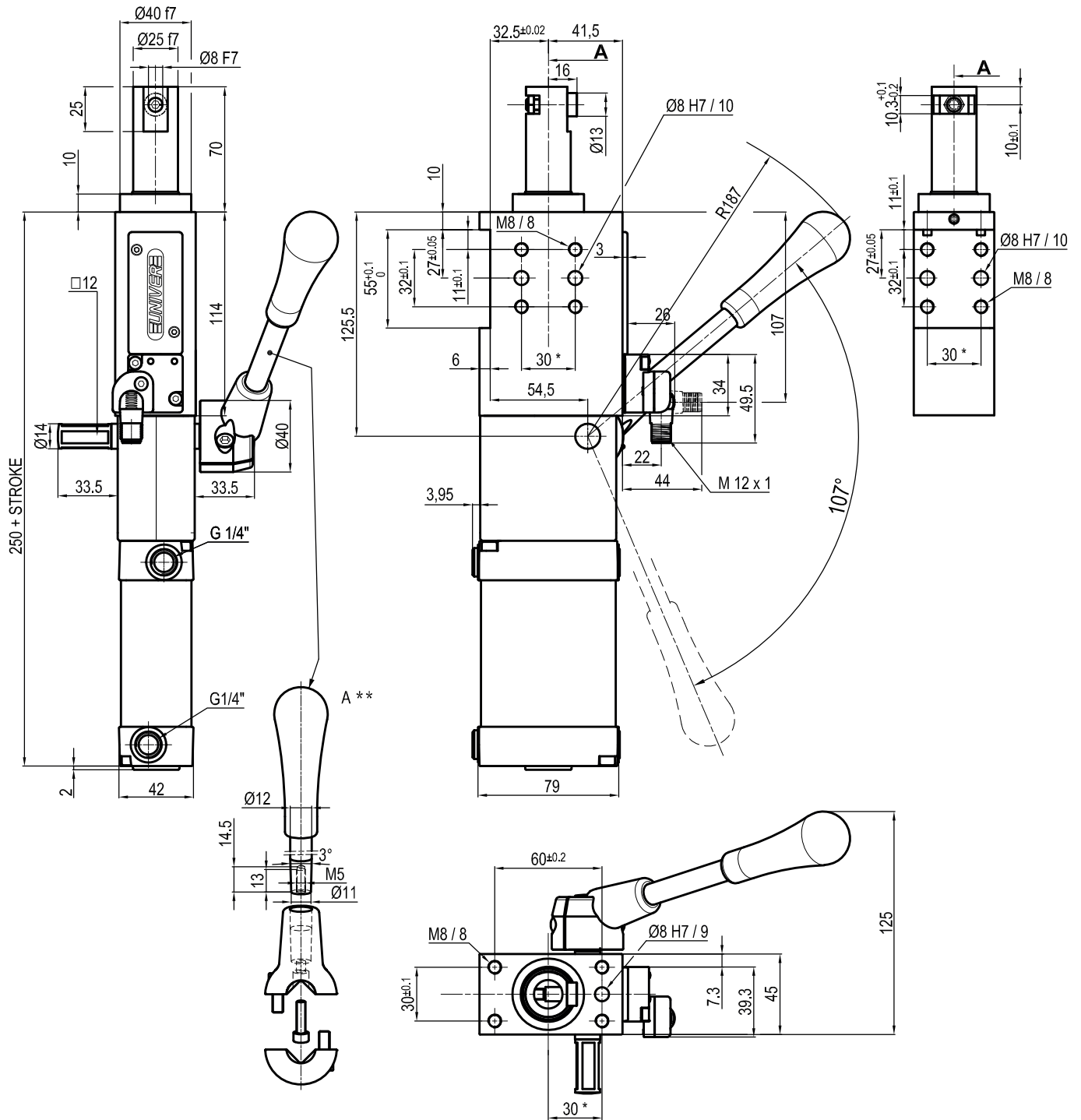
Pneumatic ports on both sides

\*: TOLERANCE BETWEEN DOWELS ± 0,02, BETWEEN SCREW HOLES ± 0,1

\*\*: DIMENSIONS TO BE RESPECTED IN CASE OTHER MANUAL LEVERS ARE USED

Subject to technical modifications without notice

## ULM50\_\_FXK0



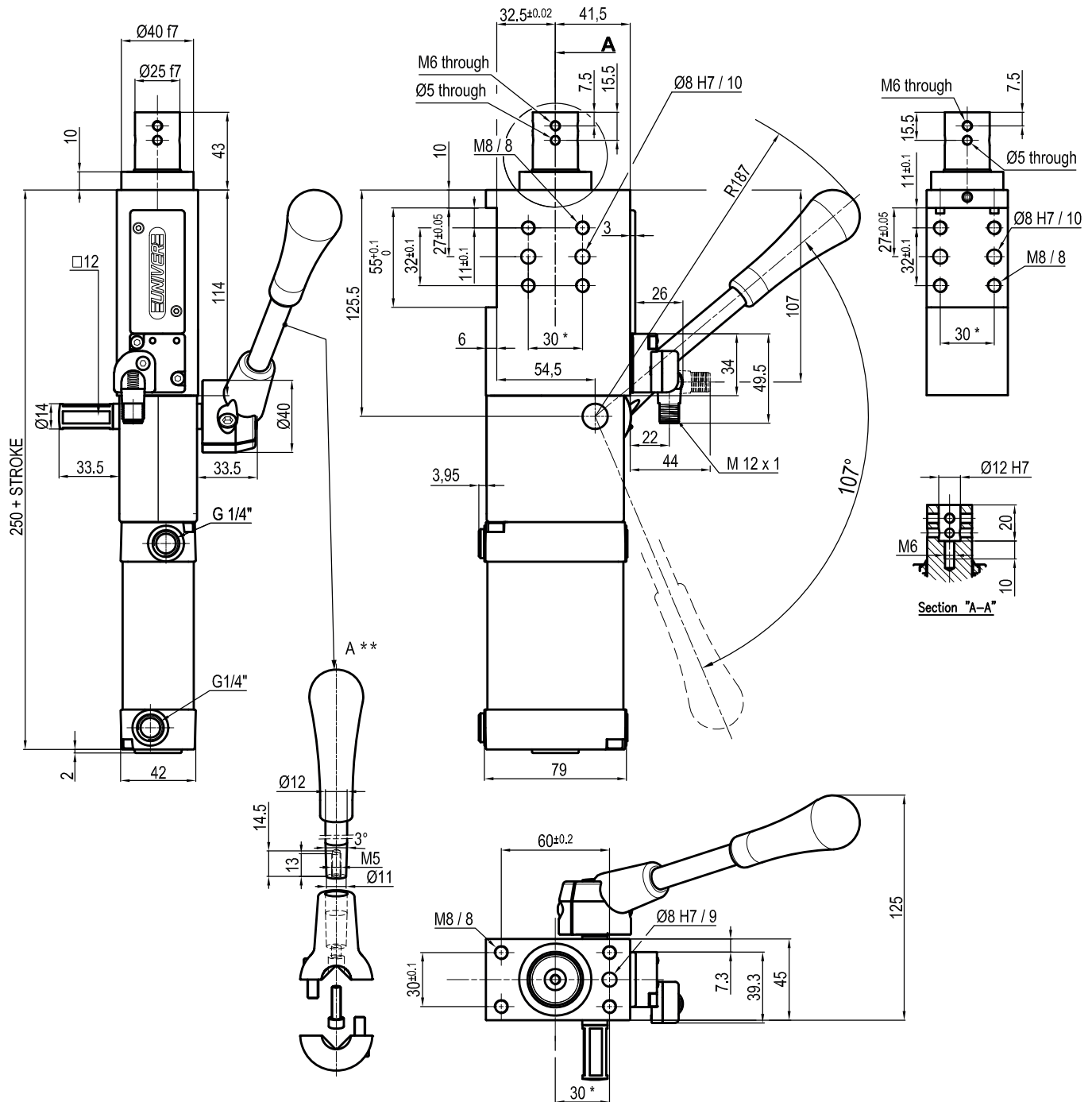
Bore Ø	Max. pull force 0,5 MPa	Max. push force 0,5 MPa	Max. torque 6 Nm	Max. deflection moment 7,5 Nm	Weight
50 mm	560 N	615 N	± 0,06°	± 0,03°	3,4 Kg

Min./Max. operating pressure: **0,4 / 0,6 MPa**  
 Operating temperature: **5° ± 45° C**  
 Strokes in mm.: **15 - 25 - 40 - 50 - 60**  
 With hand lever  
 Electronic sensor with M12 swivel connector, from 0° to 90°,  
 in steps of 10°  
 Supply voltage: **10 ± 30 Vdc**  
 IP code: **IP 65**  
 Pneumatic ports on both sides

\*: TOLERANCE BETWEEN DOWELS ± 0,02, BETWEEN SCREW HOLES ± 0,1  
 \*\*: DIMENSIONS TO BE RESPECTED IN CASE OTHER MANUAL LEVERS ARE USED

Subject to technical modifications without notice

## ULM50\_\_IXK0



Bore Ø	Max. pull force 0,5 MPa	Max. push force 0,5 MPa	Max. torque 6 Nm	Max. deflection moment 7,5 Nm	Weight
50 mm	560 N	615 N	± 0,06°	± 0,03°	3,4 Kg

 Min./Max. operating pressure: **0,4 / 0,6 MPa**

 Operating temperature: **5° ± 45° C**

 Strokes in mm.: **15 - 25 - 40 - 50 - 60**

With hand lever

Electronic sensor with M12 swivel connector, from 0° to 90°, in steps of 10°

 Supply voltage: **10 ÷ 30 Vdc**

 IP code: **IP 65**

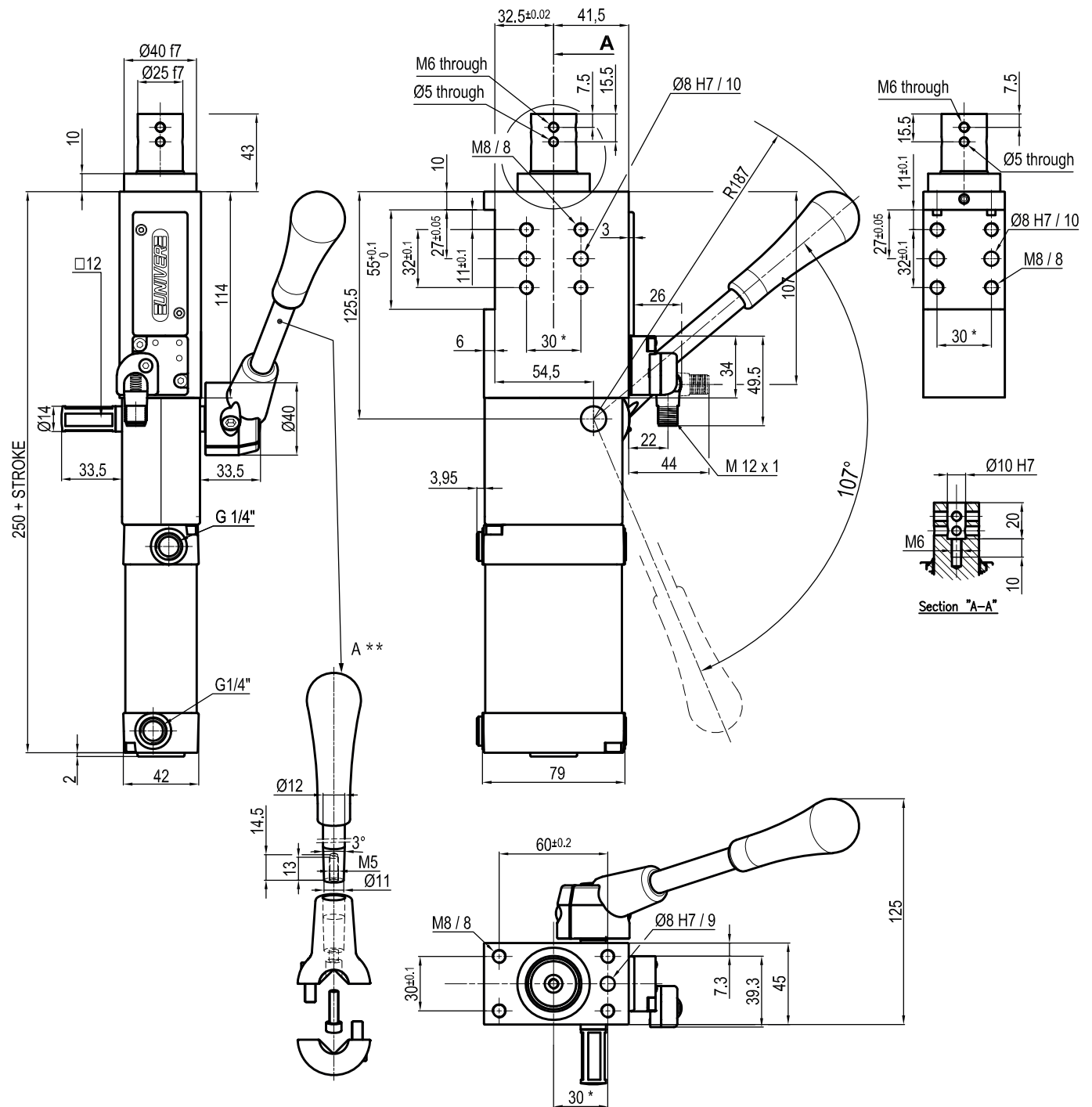
Pneumatic ports on both sides

\* : TOLERANCE BETWEEN DOWELS ± 0,02, BETWEEN SCREW HOLES ± 0,1  
 \*\* : DIMENSIONS TO BE RESPECTED IN CASE OTHER MANUAL LEVERS ARE USED

Subject to technical modifications without notice



## ULM50\_\_HXK0



Bore Ø	Max. pull force 0,5 MPa	Max. push force 0,5 MPa	Max. torque 6 Nm	Max. deflection moment 7,5 Nm	Weight
50 mm	560 N	615 N	± 0,06°	± 0,03°	3,4 Kg

 Min./Max. operating pressure: **0,4 / 0,6 MPa**

 Operating temperature: **5° ± 45° C**

 Strokes in mm.: **15 - 25 - 40 - 50 - 60**

With hand lever

Electronic sensor with M12 swivel connector, from 0° to 90°, in steps of 10°

 Supply voltage: **10 ÷ 30 Vdc**

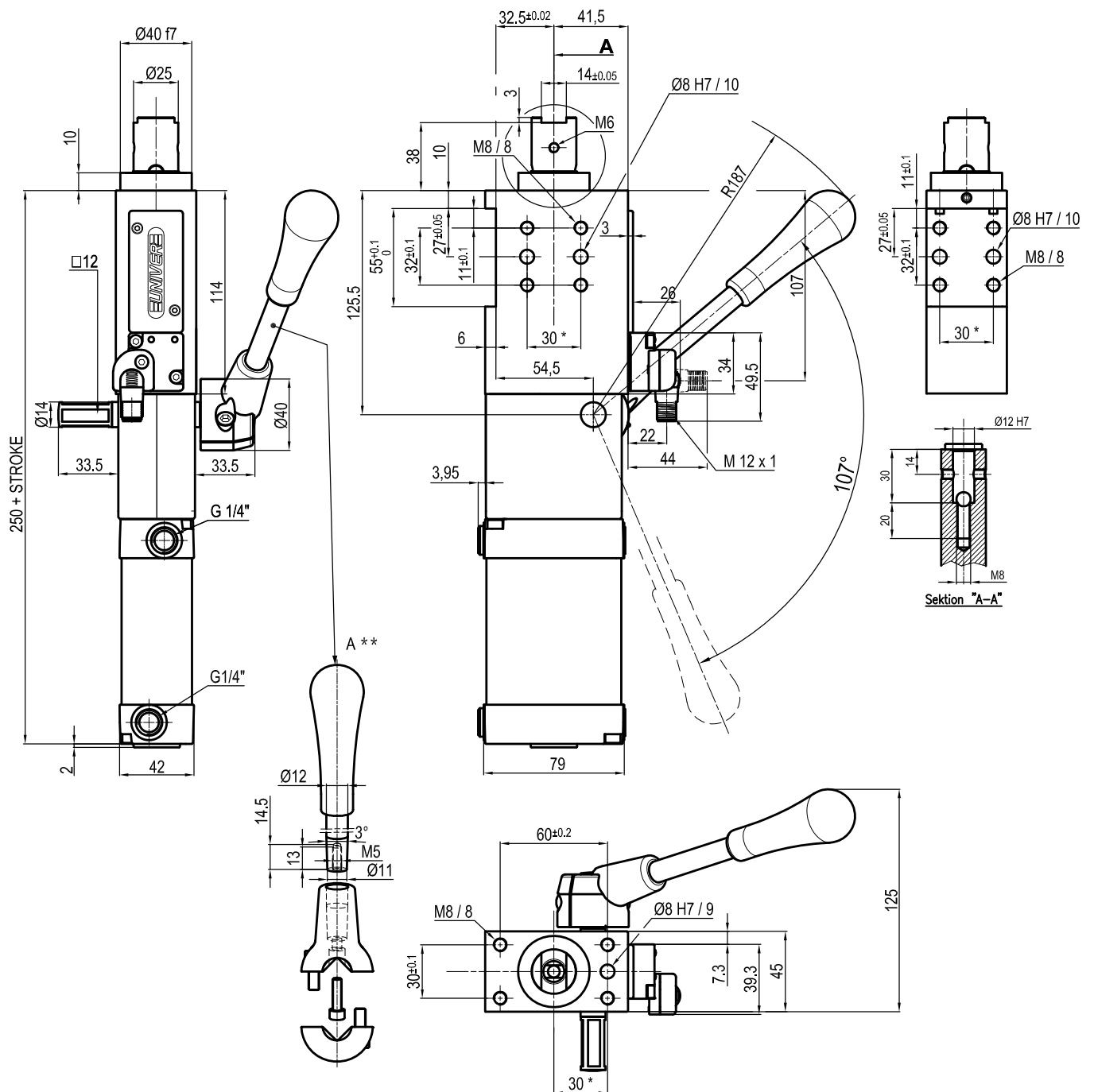
 IP code: **IP 65**

Pneumatic ports on both sides

\* : TOLERANCE BETWEEN DOWELS ± 0,02, BETWEEN SCREW HOLES ± 0,1  
 \*\* : DIMENSIONS TO BE RESPECTED IN CASE OTHER MANUAL LEVERS ARE USED

Subject to technical modifications without notice

## ULM50\_\_LXK0



Bore Ø	Max. pull force 0,5 MPa	Max. push force 0,5 MPa	Max. torque 6 Nm	Max. deflection moment 7,5 Nm	Weight
50 mm	560 N	615 N	± 0,06°	± 0,03°	3,4 Kg

 Min./Max. operating pressure: **0,4 / 0,6 MPa**

 Operating temperature: **5°± 45° C**

 Strokes in mm.: **15 - 25 - 40 - 50 - 60**

With hand lever

Electronic sensor with M12 swivel connector, from 0° to 90°, in steps of 10°

 Supply voltage: **10 ± 30 Vdc**

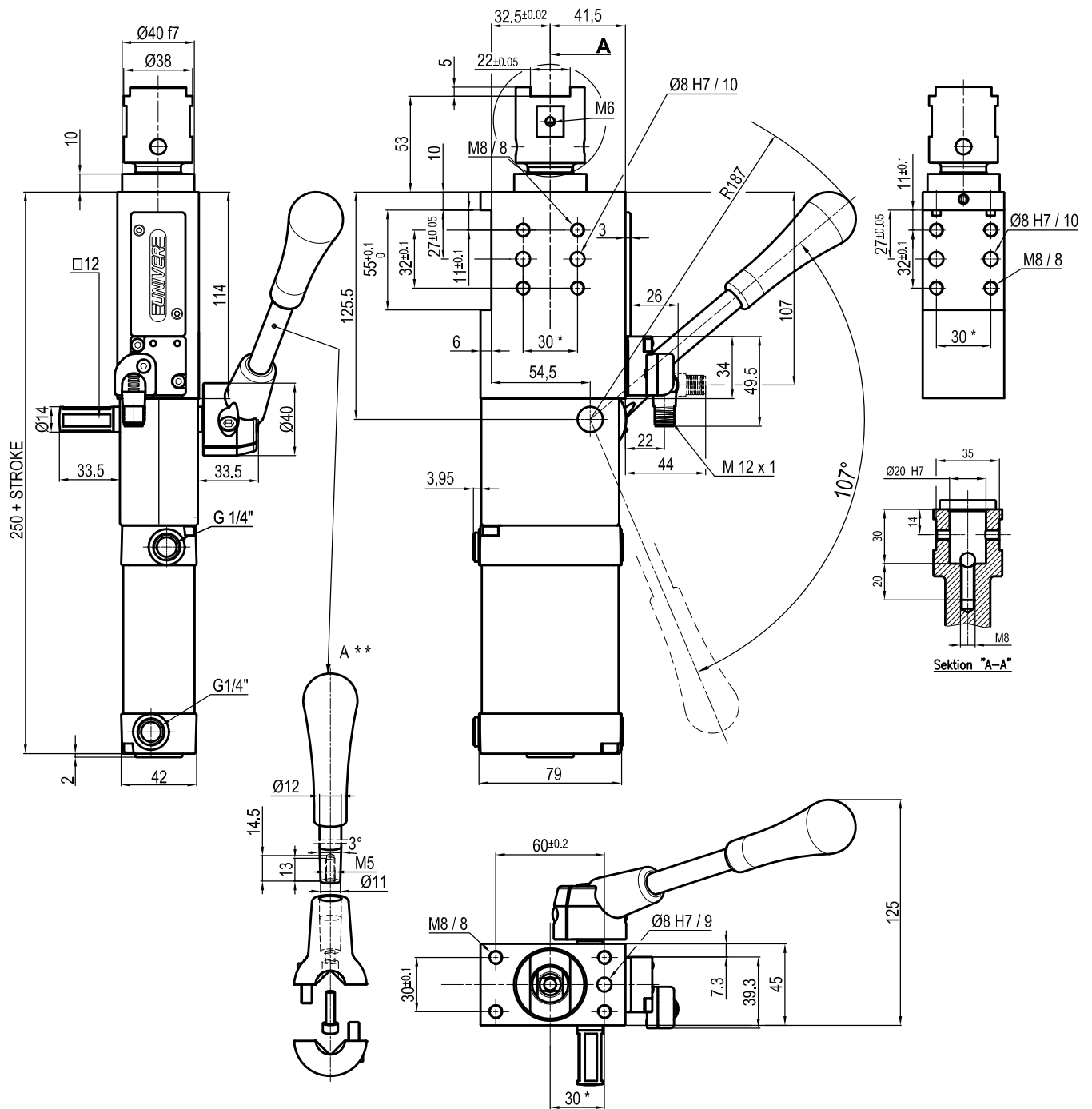
 IP code: **IP 65**

Pneumatic ports on both sides

 \*: TOLERANCE BETWEEN DOWELS ± 0,02, BETWEEN SCREW HOLES ± 0,1  
 \*\*: DIMENSIONS TO BE RESPECTED IN CASE OTHER MANUAL LEVERS ARE USED

Subject to technical modifications without notice

## ULM50\_\_MXK0



Bore Ø	Max. pull force 0,5 MPa	Max. push force 0,5 MPa	Max. torque 6 Nm	Max. deflection moment 7,5 Nm	Weight
50 mm	560 N	615 N	± 0,06°	± 0,03°	3,4 Kg

 Min./Max. operating pressure: **0,4 / 0,6 MPa**

 Operating temperature: **5°± 45° C**

 Strokes in mm.: **15 - 25 - 40 - 50 - 80**

With hand lever

Electronic sensor with M12 swivel connector, from 0° to 90°, in steps of 10°

 Supply voltage: **10 ± 30 Vdc**

 IP code: **IP 65**

Pneumatic ports on both sides

\* : TOLERANCE BETWEEN DOWELS ± 0,02, BETWEEN SCREW HOLES ± 0,1  
 \*\* : DIMENSIONS TO BE RESPECTED IN CASE OTHER MANUAL LEVERS ARE USED

Subject to technical modifications without notice