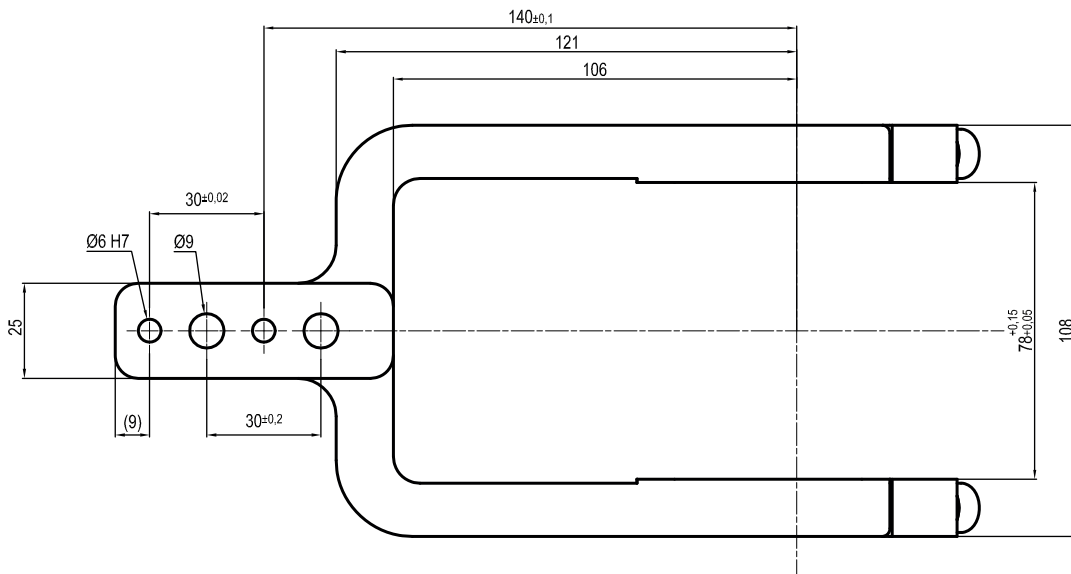
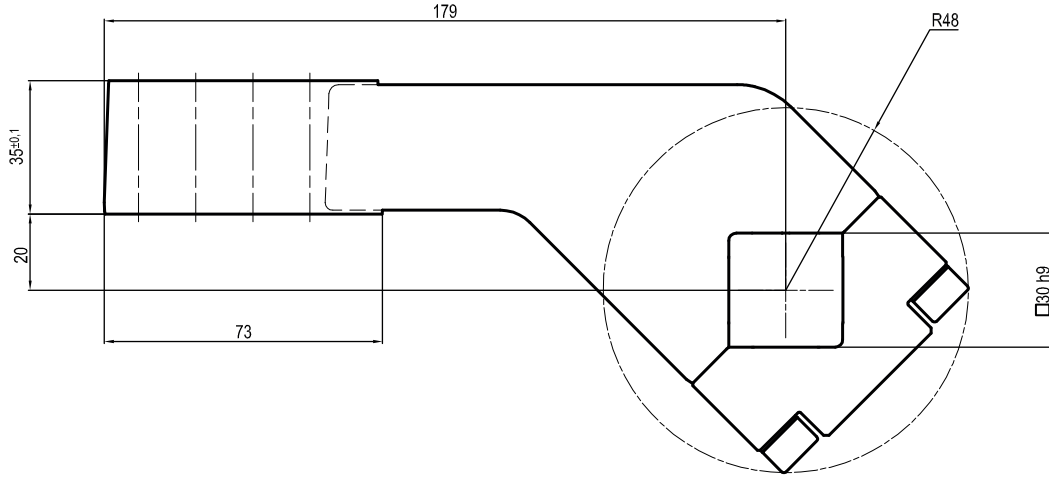


LKP80C

□ 30 mm - offset 20 mm



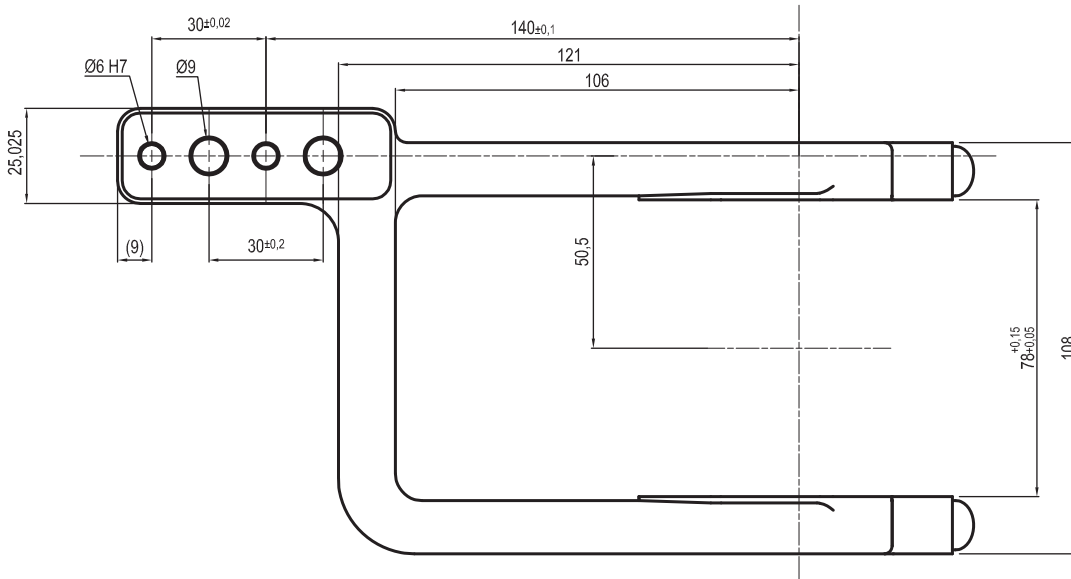
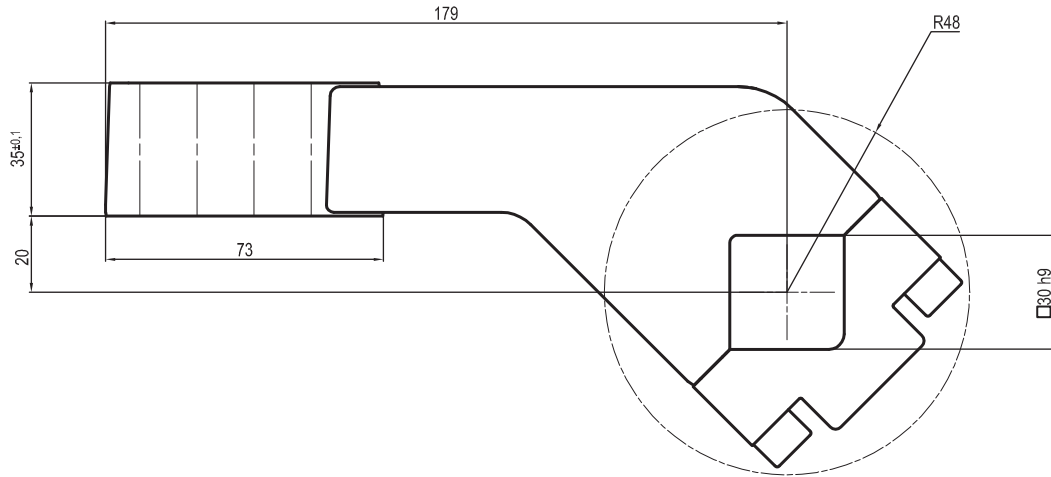
Clamp size	Material	Weight
80 mm	Aluminium	0,6 Kg

THE CLAMPING ARM INCLUDES THE NECESSARY SCREWS

Subject to technical modifications without notice

LKP80D

□ 30 mm - offset 20 mm



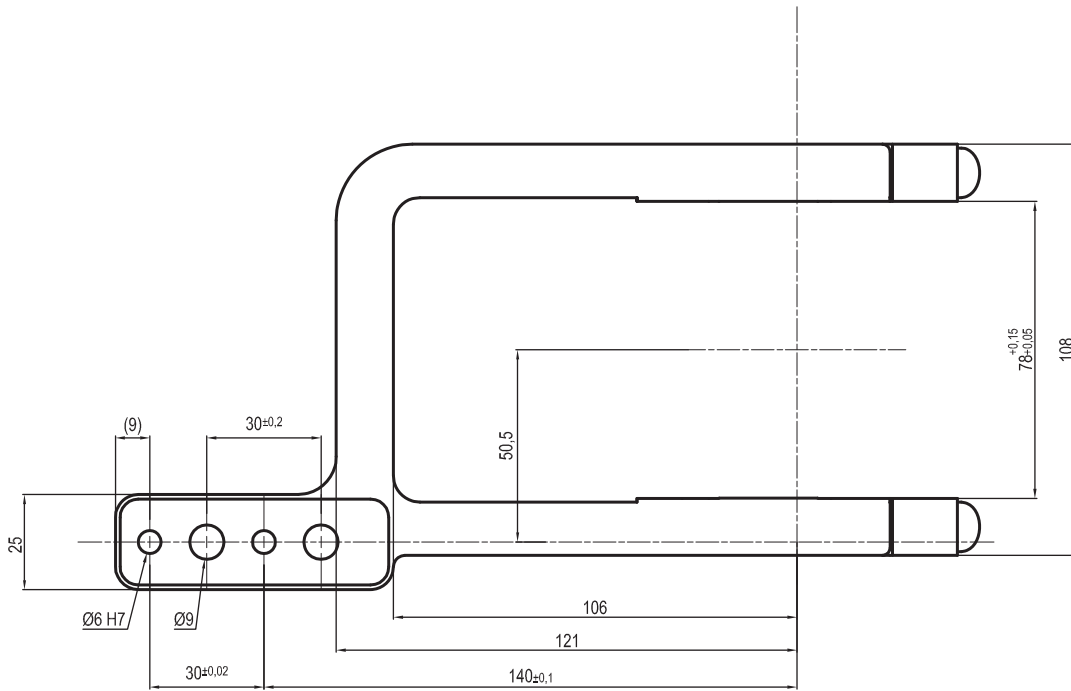
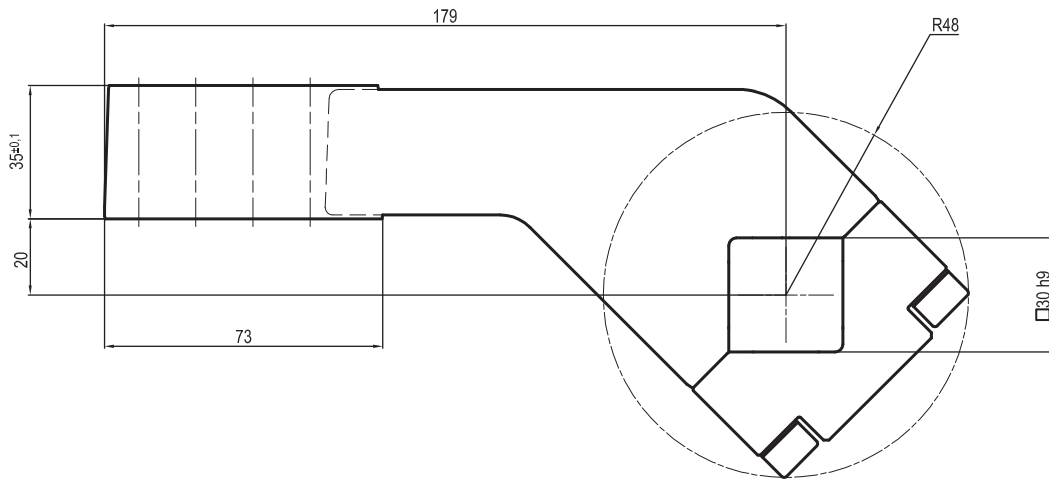
Clamp size	Material	Weight
80 mm	Aluminium	0,6 Kg

THE CLAMPING ARM INCLUDES THE NECESSARY SCREWS

Subject to technical modifications without notice

LKP80S

□ 30 mm - offset 20 mm



Clamp size	Material	Weight
80 mm	Aluminium	0,6 Kg

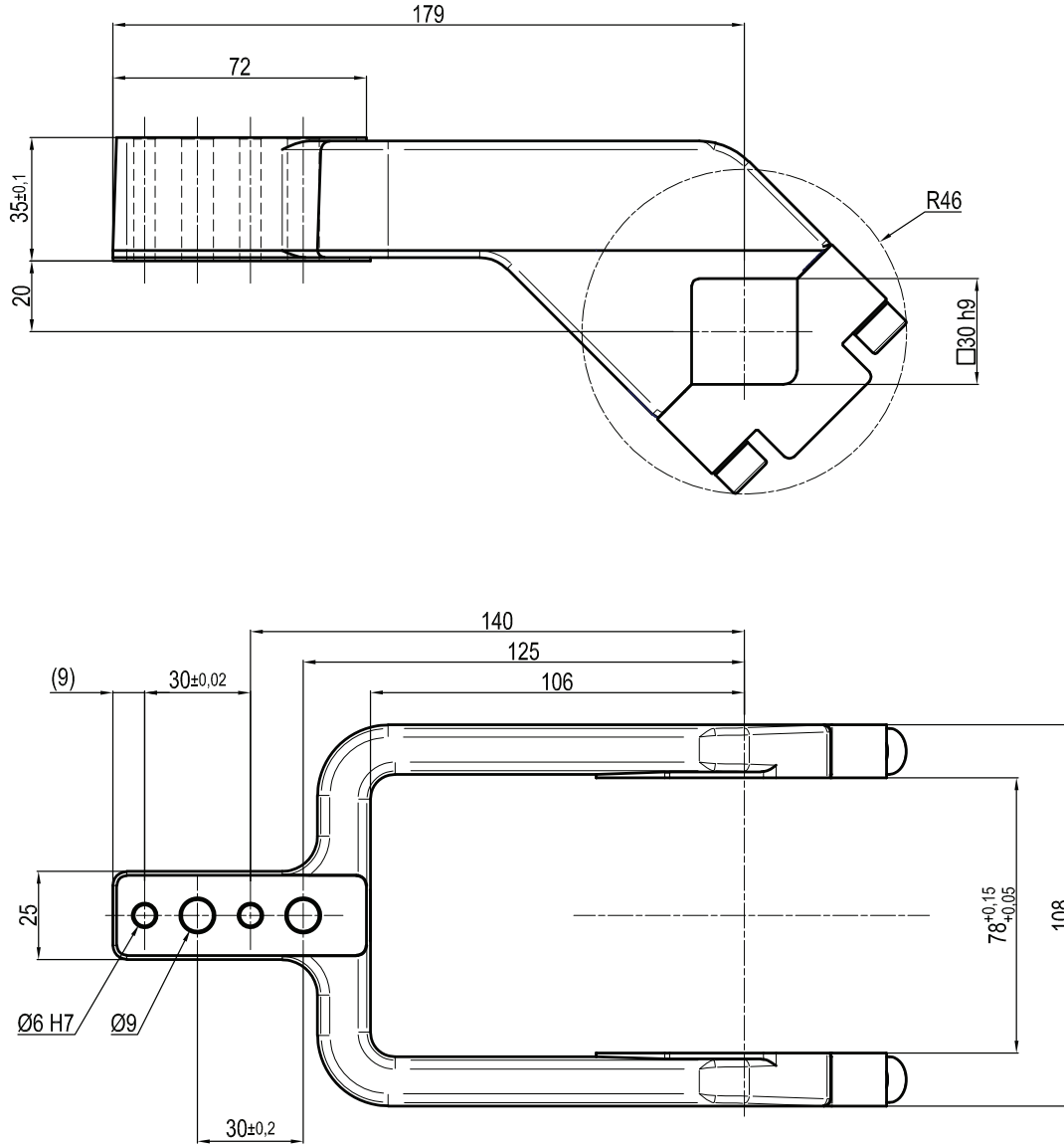
THE CLAMPING ARM INCLUDES THE NECESSARY SCREWS

Subject to technical modifications without notice

Rev. 02 15.07.16

UKP80CS

□ 30 mm - offset 20 mm



Clamp size	Material	Weight
80 mm	Steel	2,26 Kg

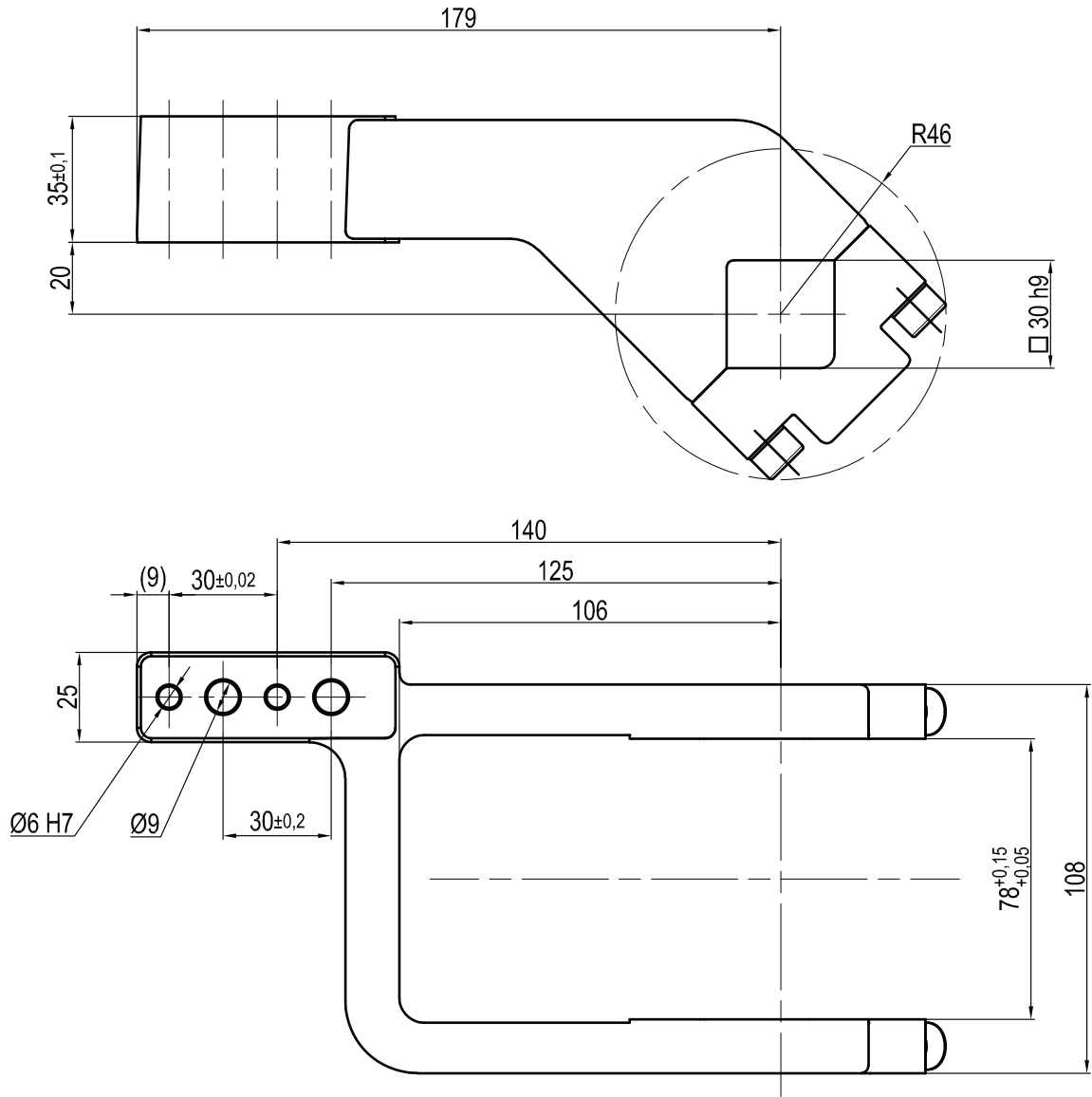
THE CLAMPING ARM INCLUDES THE NECESSARY SCREWS

Subject to technical modifications without notice

Rev. 00 21.07.20

UKP80DS

□ 30 mm - offset 20 mm



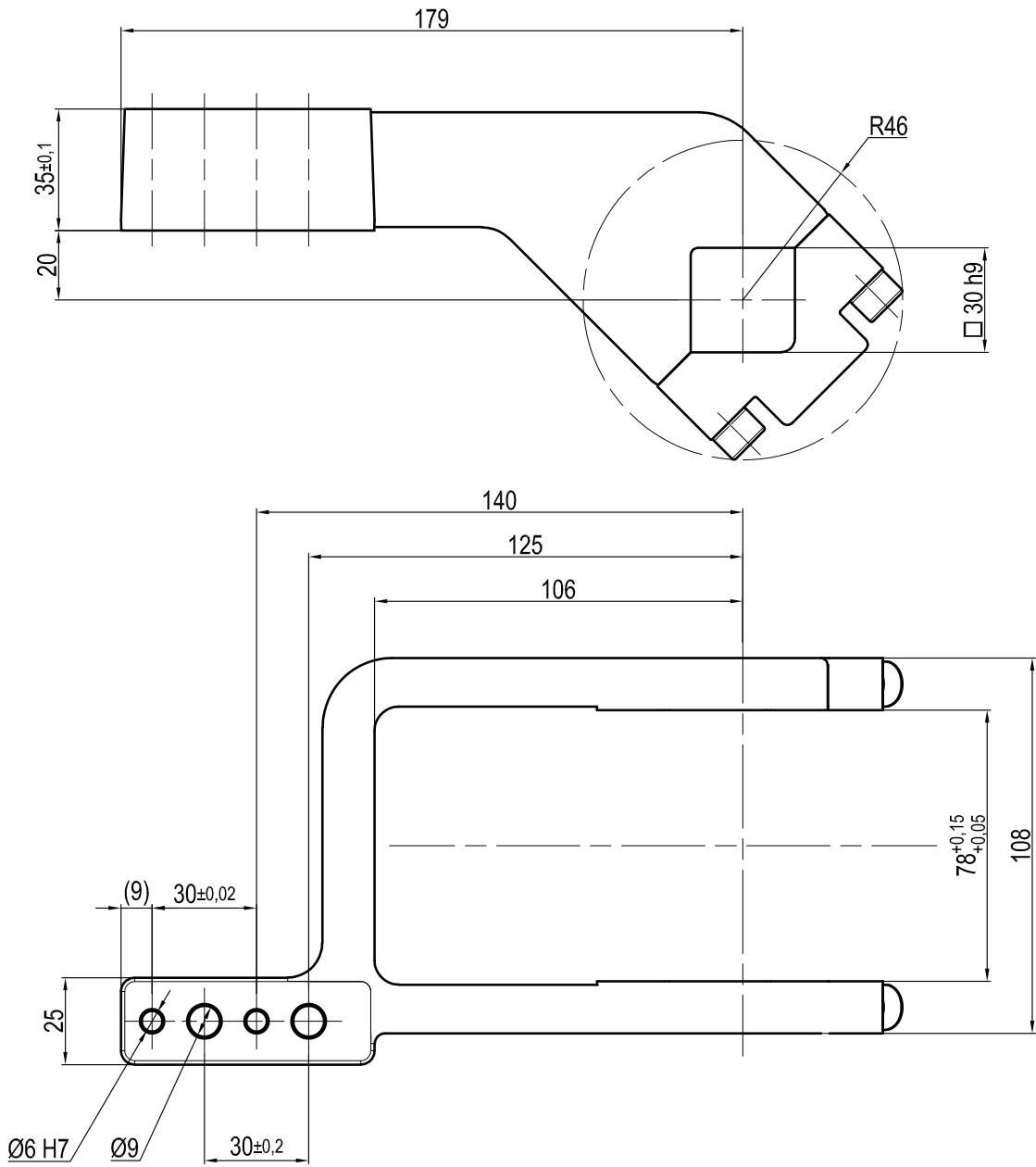
Clamp size	Material	Weight
80 mm	Steel	2,3 Kg

THE CLAMPING ARM INCLUDES THE NECESSARY SCREWS

Subject to technical modifications without notice

UKP80SS

□ 30 mm - offset 20 mm



Clamp size	Material	Weight
80 mm	Steel	2,3 Kg

THE CLAMPING ARM INCLUDES THE NECESSARY SCREWS

Subject to technical modifications without notice

Rev. 00 21.07.20