

USS63

UNICLAMP Pneumatic pin clamp HC, orientable hook



U	S	S	6	3	J	B	1	0	-	-	-	K	0
1	2	3	4	5	6	7	8	9	10				

1 Series	2 Version	3 Size	4 Model
----------	-----------	--------	---------

US = UNICLAMP Pin clamp, with compensation

S = Pneumatic, orientable hook

63 = \varnothing 63 mm

J = Standard
R = Locking/unlocking device

5 Hook position	6 Pin diameter	7 Locating pin
-----------------	----------------	----------------

B = Standard position



C = Rotated by 180°



- 1** $\leq \varnothing$ 18 mm
- 2** = \varnothing 20 mm
- 3** = \varnothing 25 mm
- 4** = \varnothing 30 mm
- 5** = \varnothing 35 mm
- 6** = \varnothing 40 mm

For pin \varnothing outside the mentioned range, please contact our Sales Dept.

- 0** = Locating pin not included
- 1** = Locating pin included

8 Progressive numbering	9 Sensor	10 Product revision
-------------------------	----------	---------------------

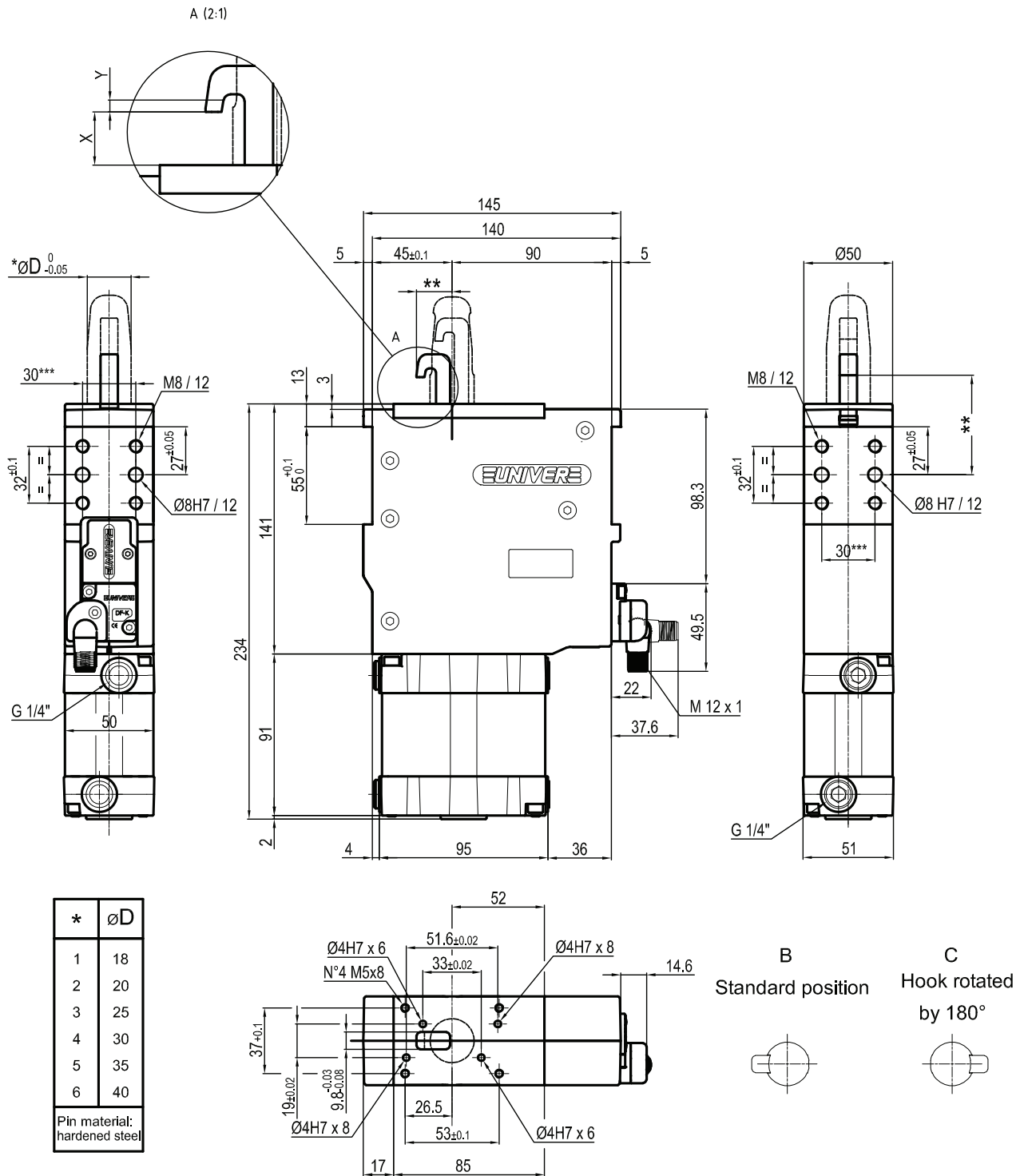
Progressive numbers for special products are assigned by the Sales. Dept.

K = Electronic sensor PNP (optical) (DF-K)
N = No sensor (with protection plate)

Assigned by UNIVER

HC= High Compensation

USS63J__0__K0



Bore Ø	Clamping force	Weight (reference plate, pin and hook not included)
63 mm	3500 N	3,1 Kg

** : MISSING DIMENSION TO BE DEFINED ACCORDING TO CUSTOMER SPECIFICATIONS
 *** : TOLERANCE BETWEEN DOWEL HOLES ± 0,02, BETWEEN SCREW HOLES ± 0,1

X = metal sheet

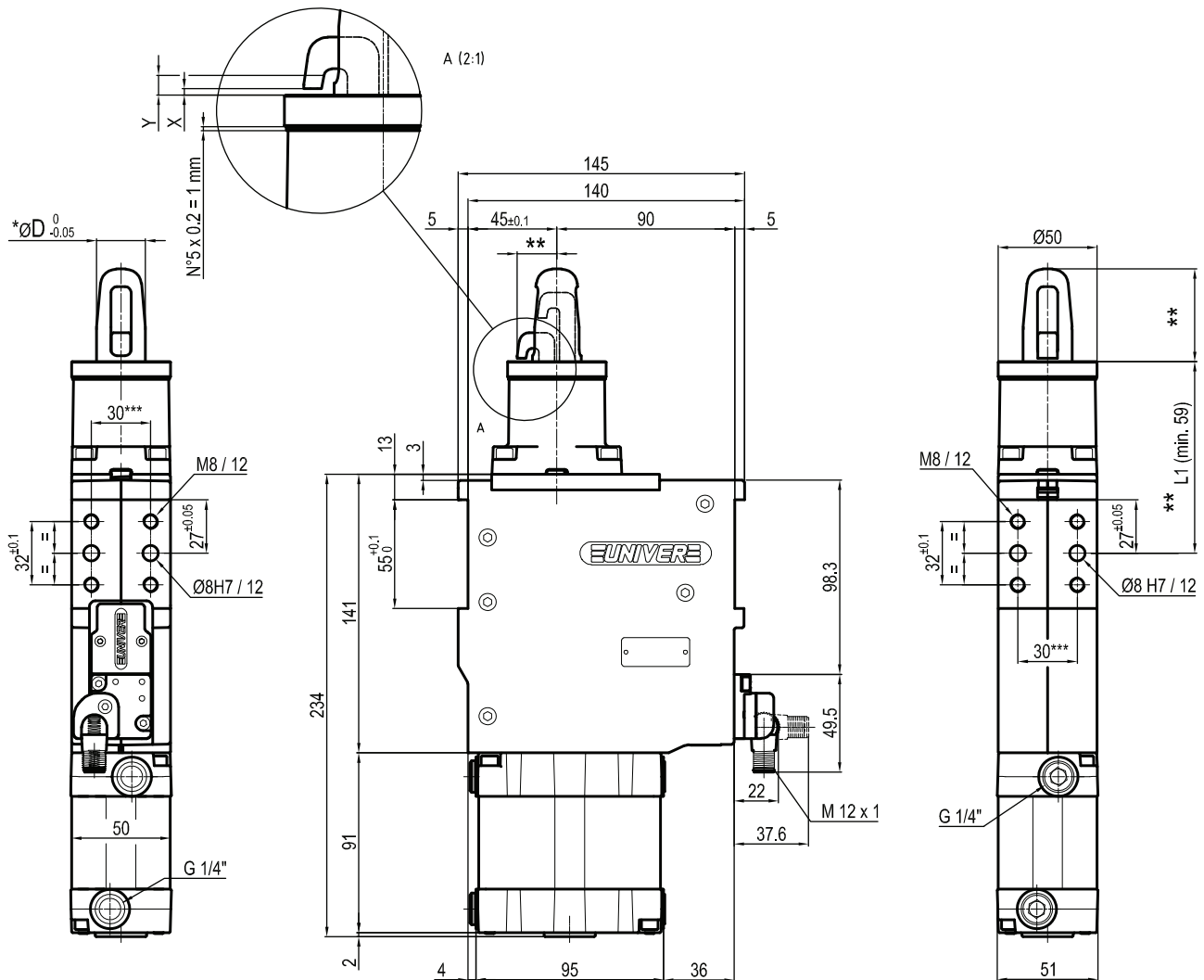
Y = clamping range (X + 6 mm Max)

Subject to technical modifications without notice

Rev. 00 20.05.20

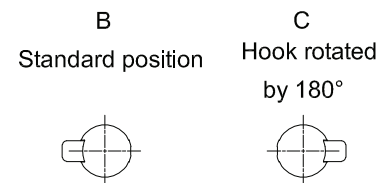
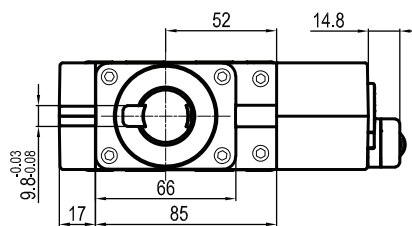
Min./Max. operating pressure: **0,4 / 0,6 MPa**
 Operating temperature: **5° ÷ 45° C**
 Electronic sensor with M12 swivel connector,
 from 0° to 90°, in steps of 10°
 Supply voltage: 10 ÷ 30 Vdc
 IP code: **IP 65**

USS63J__1__K0



*	ØD
1	18
2	20
3	25
4	30
5	35
6	40

Pin material:
hardened steel



Bore Ø	Clamping force	Weight (reference plate, pin and hook not included)
63 mm	3500 N	3,1 Kg

** : MISSING DIMENSION TO BE DEFINED ACCORDING TO CUSTOMER SPECIFICATIONS
 *** : TOLERANCE BETWEEN DOWEL HOLES $\pm 0,02$, BETWEEN SCREW HOLES $\pm 0,1$

X = metal sheet

Y = clamping range (X + 6 mm Max)

Subject to technical modifications without notice

Rev. 01 16.10.20

Min./Max. operating pressure: **0,4 / 0,6 MPa**
 Operating temperature: **5° ÷ 45° C**
 Electronic sensor with M12 swivel connector,
 from 0° to 90°, in steps of 10°
 Supply voltage: 10 ÷ 30 Vdc
 IP code: **IP 65**