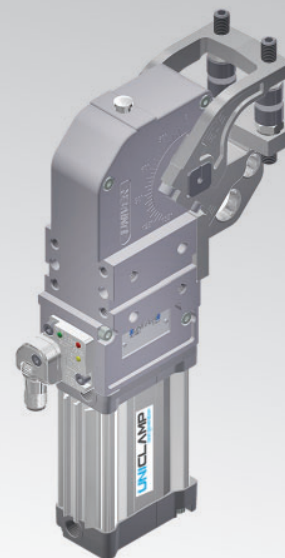
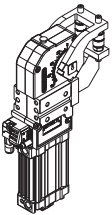
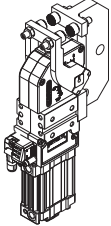


UGP40

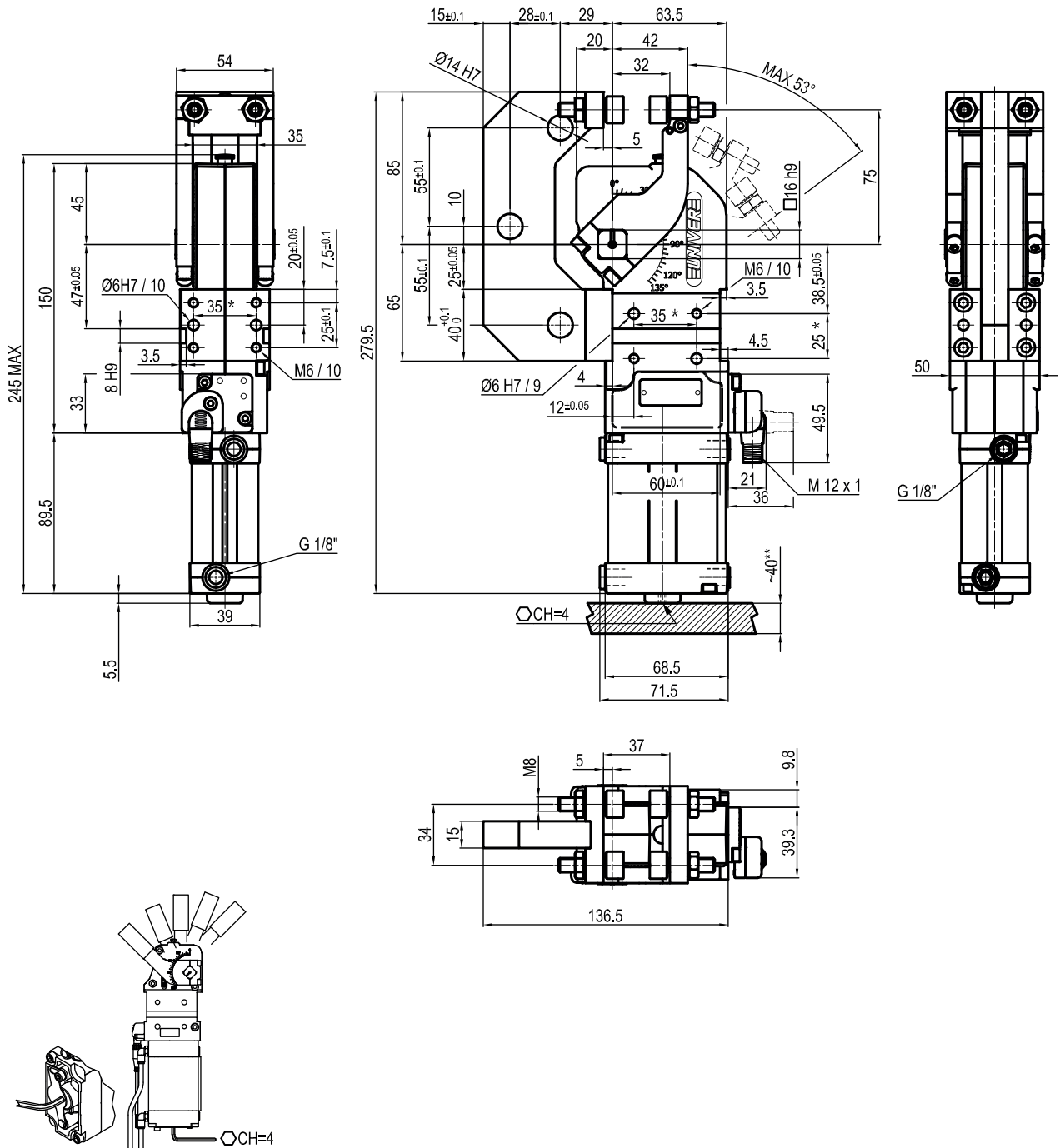
Unità gripper UNICLAMP



U	G	P	4	0	V	B	S	K	0
1	2	3	4	5	6	7	8		

1 Serie UG = Unità gripper UNICLAMP, con regolazione continuo angolo d'apertura da: 0° a 95° max L'angolo di apertura può variare a seconda della posizione e della tipologia del pressore	2 Versione P = Pneumatica	3 Taglia 40 = Ø 40 mm
4 Posizione pressore V = 90°  O = 180° 	5 Tipo di movimento B = Doppio movimento; doppia serie di dita. Solo per unità con pressore in posizione verticale F = Doppio movimento; singola serie di dita. Solo per unità con pressore in posizione verticale L = Singolo movimento; doppia serie di dita H = Doppio movimento, senza dita di presa. Solo per unità con pressore in posizione verticale 1 = Singolo movimento; 1 paio di dita zigriate 2 = Singolo movimento; 2 paia di dita zigriate	
7 Sensore N = Senza sensore (con piastra di chiusura) K = Sensore elettronico PNP (ottico) (DF-K) D = Sensore pneumatico J = Sensore elettronico NPN (ottico) (DF-J) Y = Sensore elettronico PNP (ottico) (DF-Y) led bianco	8 Revisione prodotto Assegnato da UNIVER	

UGP40OLSK0



Bore Ø	Holding moment	Clamping moment (0,5 Mpa)	Weight (Tips not included)	Tip weight (each one)
40 mm	600 Nm	170 N	2,1 Kg	0,3 Kg

* : TOLERANCE BETWEEN DOWELS $\pm 0,02$, BETWEEN SCREW HOLES $\pm 0,1$

** : AREA TO ACCESS ANGLE ADJUSTMENT

Min./Max. operating pressure: **0,4 / 0,6 MPa**

Operating temperature: **5°÷ 45° C**

Opening angle: **adjustable from 0° to 53°**

With steel arm

Electronic sensor with M12 swivel connector, from 0° to 90°, in steps of 10°

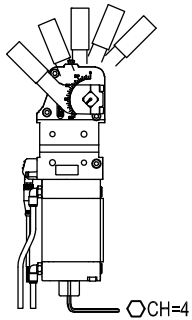
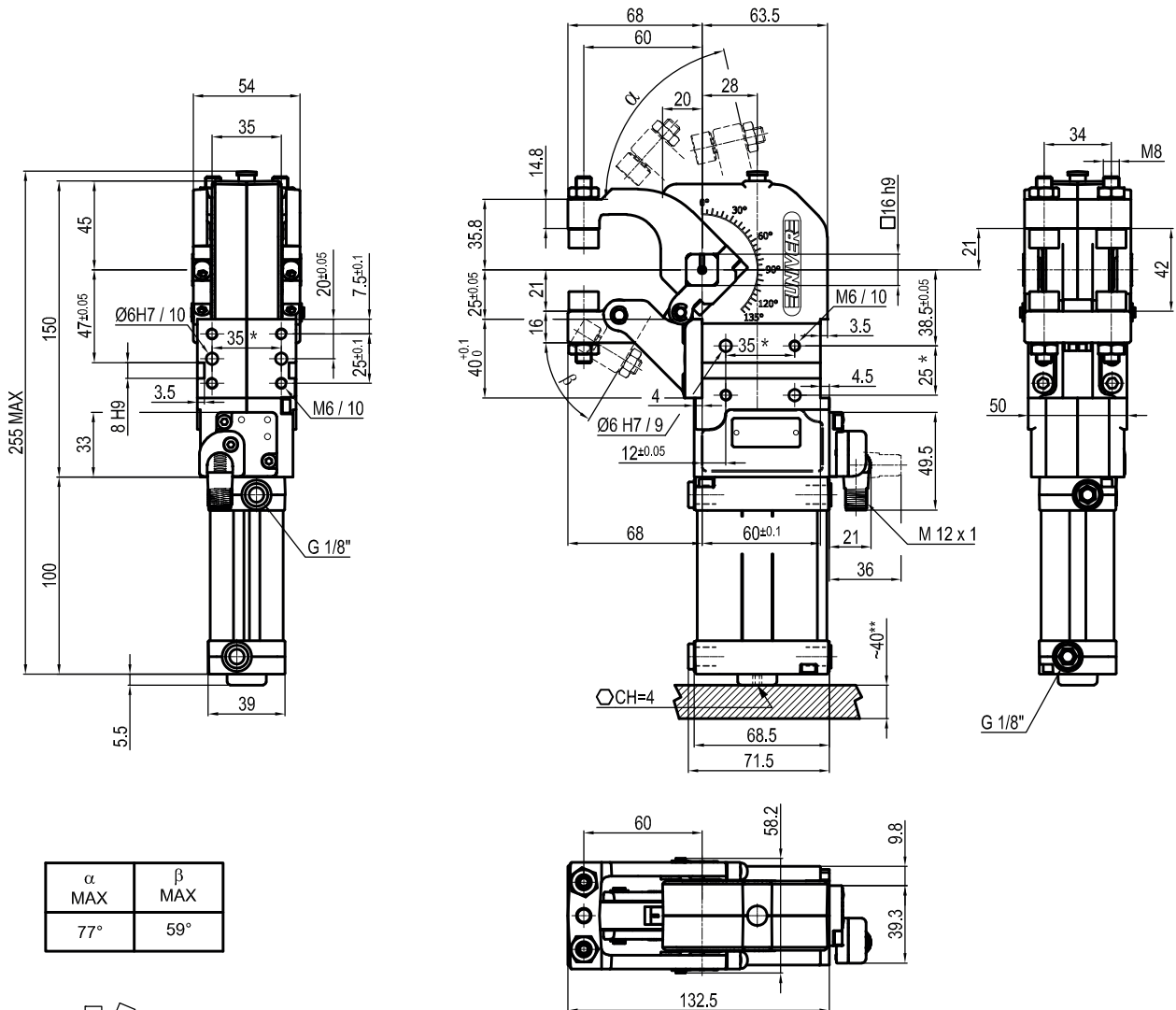
Supply voltage: 10 ÷ 30 Vdc

IP code: **IP 65**

Pneumatic ports on both sides

Beidseitige pneumatische Anschlüsse

Subject to technical modifications without notice

UGP40VBSK0


Bore Ø	Holding moment	Clamping moment (0,5 Mpa)	Weight (Tips not included)	Tip weight (each one)
40 mm	600 Nm	170 N	2,15 Kg	0,3 Kg

 Min./Max. operating pressure: **0,4 / 0,6 MPa**

 Operating temperature: **5° ÷ 45° C**

 Opening angle: **adjustable from 0° to 77°**

With steel arm

Electronic sensor with M12 swivel connector, from 0° to 90°, in steps of 10°

Supply voltage: 10 ÷ 30 Vdc

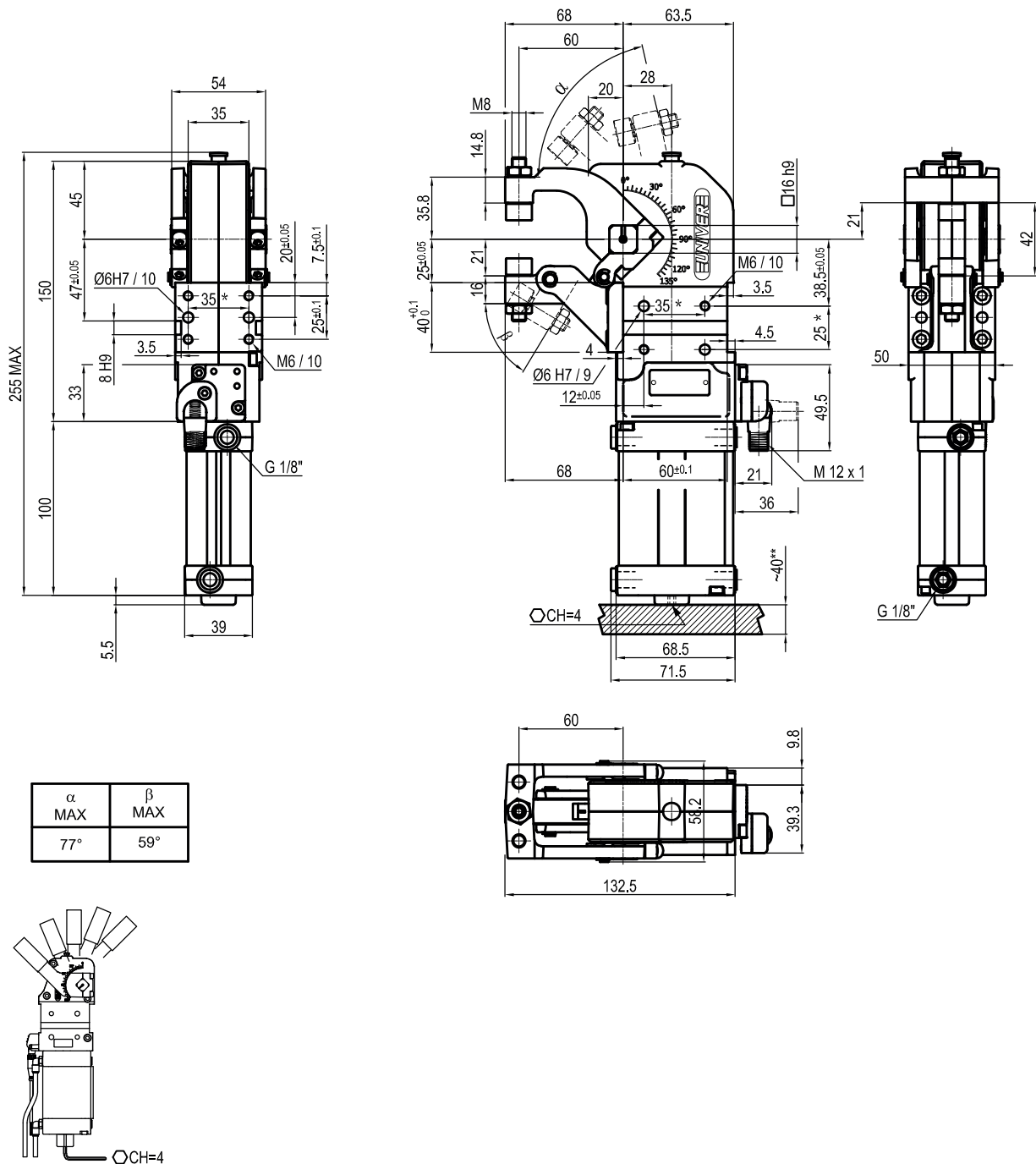
 IP code: **IP 65**

Pneumatic ports on both sides

 *: TOLERANCE BETWEEN DOWELS $\pm 0,02$, BETWEEN SCREW HOLES $\pm 0,1$

**: AREA TO ACCESS ANGLE ADJUSTMENT

Subject to technical modifications without notice

UGP40VFSK0


Bore \varnothing	Holding moment	Clamping moment (0,5 Mpa)	Weight (Tips not included)	Tip weight (each one)
40 mm	600 Nm	170 N	2,05 Kg	0,3 Kg

 Min./Max. operating pressure: **0,4 / 0,6 MPa**

 Operating temperature: **5°÷ 45° C**

 Opening angle: **adjustable from 0° to 77°**

With steel arm

Electronic sensor with M12 swivel connector, from 0° to 90°, in steps of 10°

Supply voltage: 10 ÷ 30 Vdc

 IP code: **IP 65**

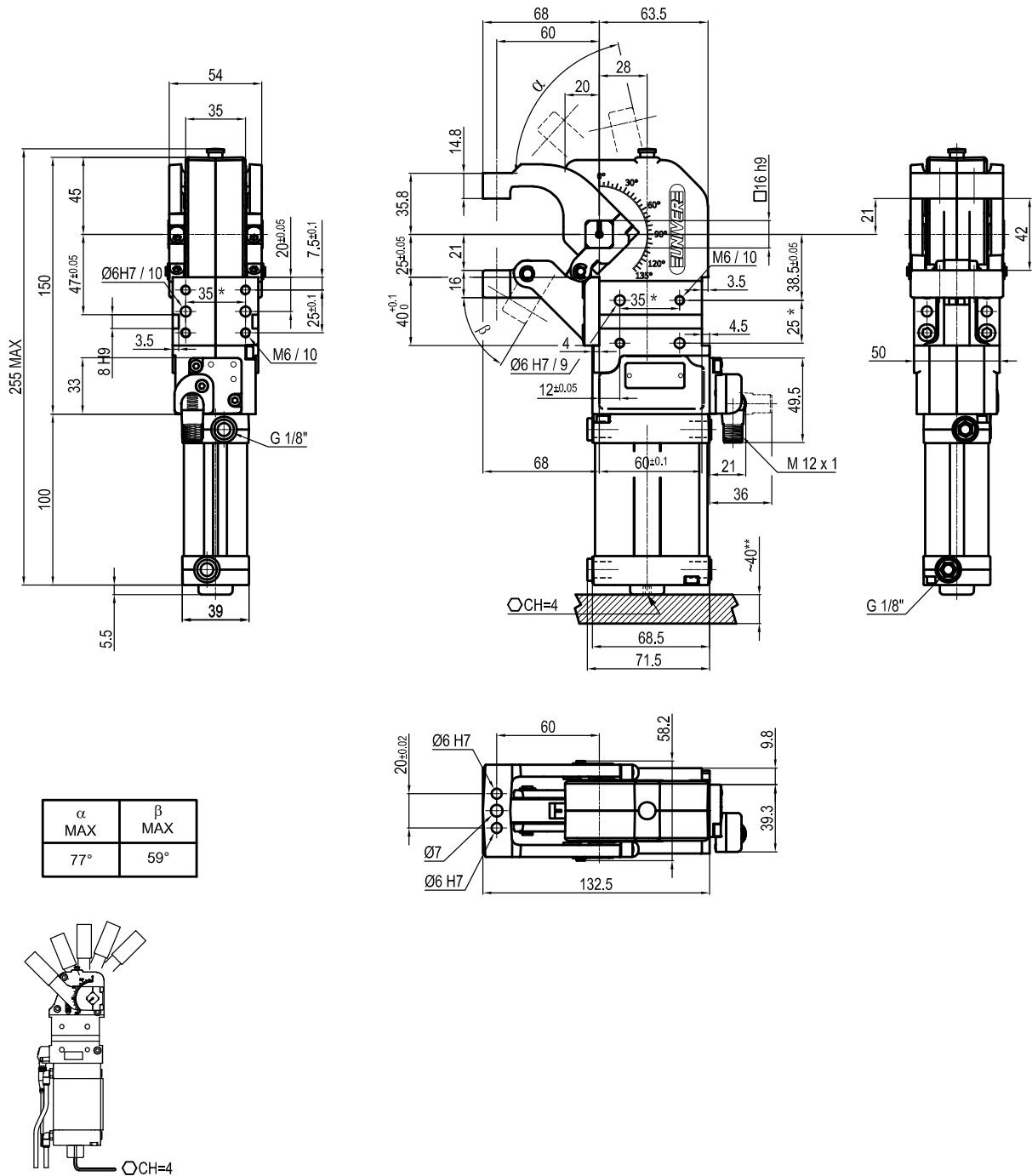
Pneumatic ports on both sides

 *: TOLERANCE BETWEEN DOWELS $\pm 0,02$, BETWEEN SCREW HOLES $\pm 0,1$

**: AREA TO ACCESS ANGLE ADJUSTMENT

Subject to technical modifications without notice

UGP40VHSKO



Bore Ø	Holding moment	Clamping moment (0,5 Mpa)	Weight (Tips not included)	Tip weight (each one)
40 mm	600 Nm	170 N	2,15 Kg	0,3 Kg

 Min./Max. operating pressure: **0,4 / 0,6 MPa**

 Operating temperature: **5°÷ 45° C**

 Opening angle: **adjustable from 0° to 77°**

With steel arm

Electronic sensor with M12 swivel connector, from 0° to 90°, in steps of 10°

Supply voltage: 10 ÷ 30 Vdc

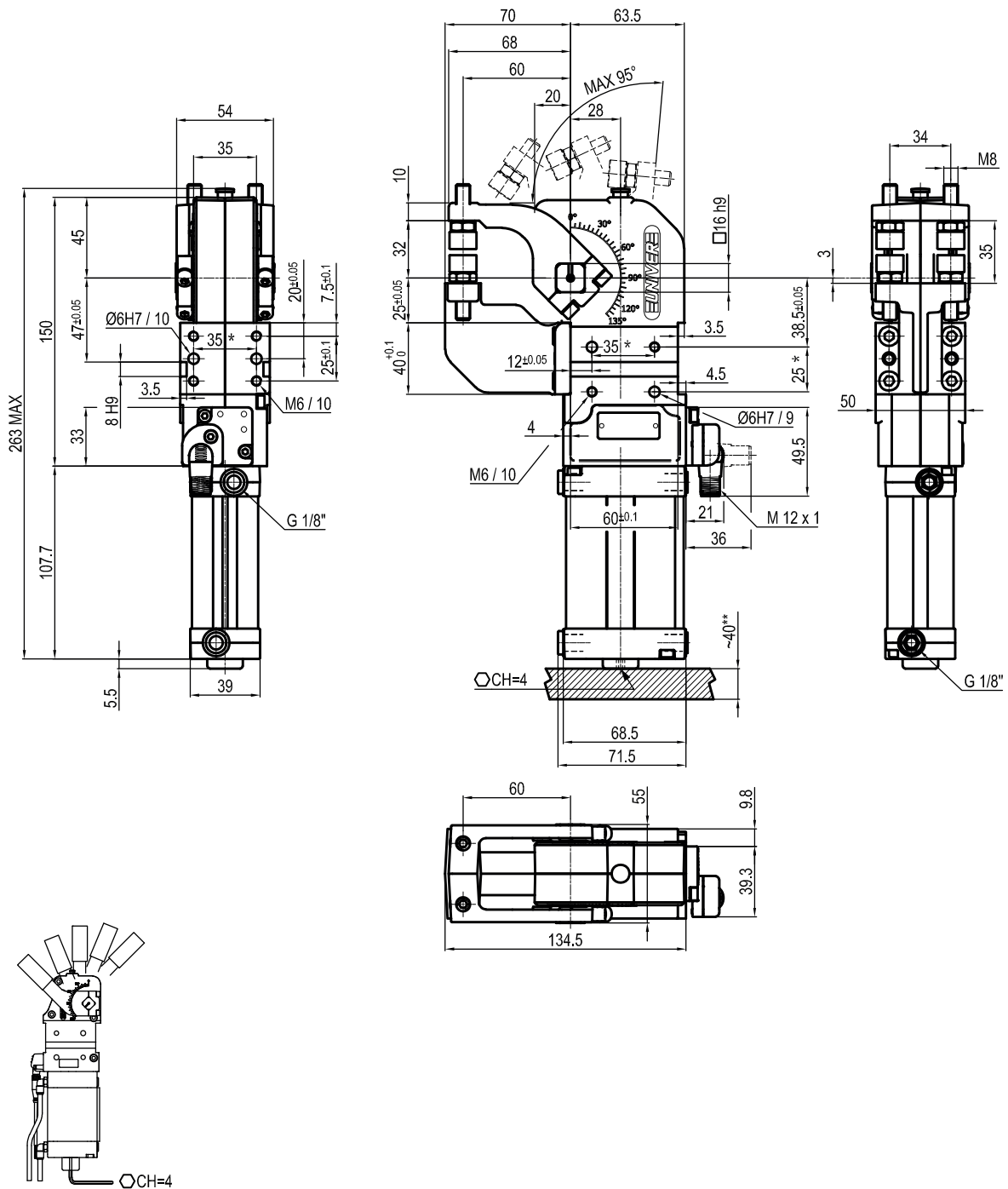
 IP code: **IP 65**

Pneumatic ports on both sides

*: TOLERANCE BETWEEN DOWELS ± 0,02, BETWEEN SCREW HOLES ± 0,1

**: AREA TO ACCESS ANGLE ADJUSTMENT

Subject to technical modifications without notice

UGP40VLSK0


Bore Ø	Holding moment	Clamping moment (0,5 Mpa)	Weight (Tips not included)	Tip weight (each one)
40 mm	600 Nm	170 N	2 Kg	0,3 Kg

* : TOLERANCE BETWEEN DOWELS $\pm 0,02$, BETWEEN SCREW HOLES $\pm 0,1$

** : AREA TO ACCESS ANGLE ADJUSTMENT

Subject to technical modifications without notice

Rev. 01 26.01.22

Min./Max. operating pressure: **0,4 / 0,6 MPa**

Operating temperature: **5° ÷ 45° C**

Opening angle: **adjustable from 0° to 95°**

With steel arm

Electronic sensor with M12 swivel connector, from 0° to 90°, in steps of 10°

Supply voltage: 10 ÷ 30 Vdc

IP code: **IP 65**

Pneumatic ports on both sides

Beidseitige pneumatische Anschlüsse