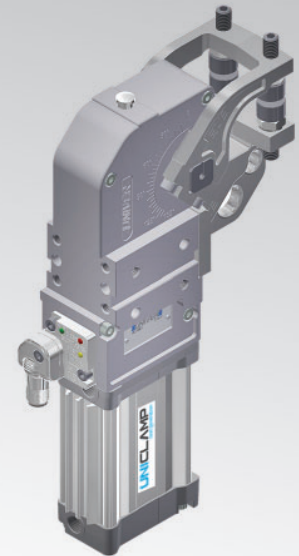


UGP40

UNICLAMP Gripper units



U	G	P	4	0	V	B	S	K	0
1	2	3	4	5	6	7	8		

1 Series	2 Version	3 Size
-----------------	------------------	---------------

UG = UNICLAMP Gripper Units
fully adjustable opening angle:
0° to 95° Max
The opening angle range may vary
according to the jaw position and style

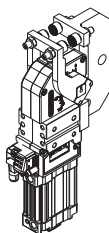
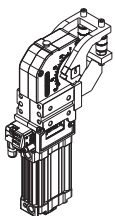
P = Pneumatic

40 = Ø 40 mm

4 Jaw position	5 Movement type	6 Jaw material
-----------------------	------------------------	-----------------------

V = 90°

O = 180°



B = Double movement; two-tip jaws
available only for vertical jaw position
F = Double movement; one-tip jaws
available only for vertical jaw position
L = Single movement; two-tip jaws
H = Double movement; no tips
available only for vertical jaw position
1 = Single movement; 1 pair of knurled tips
2 = Single movement; 2 pair of knurled tips

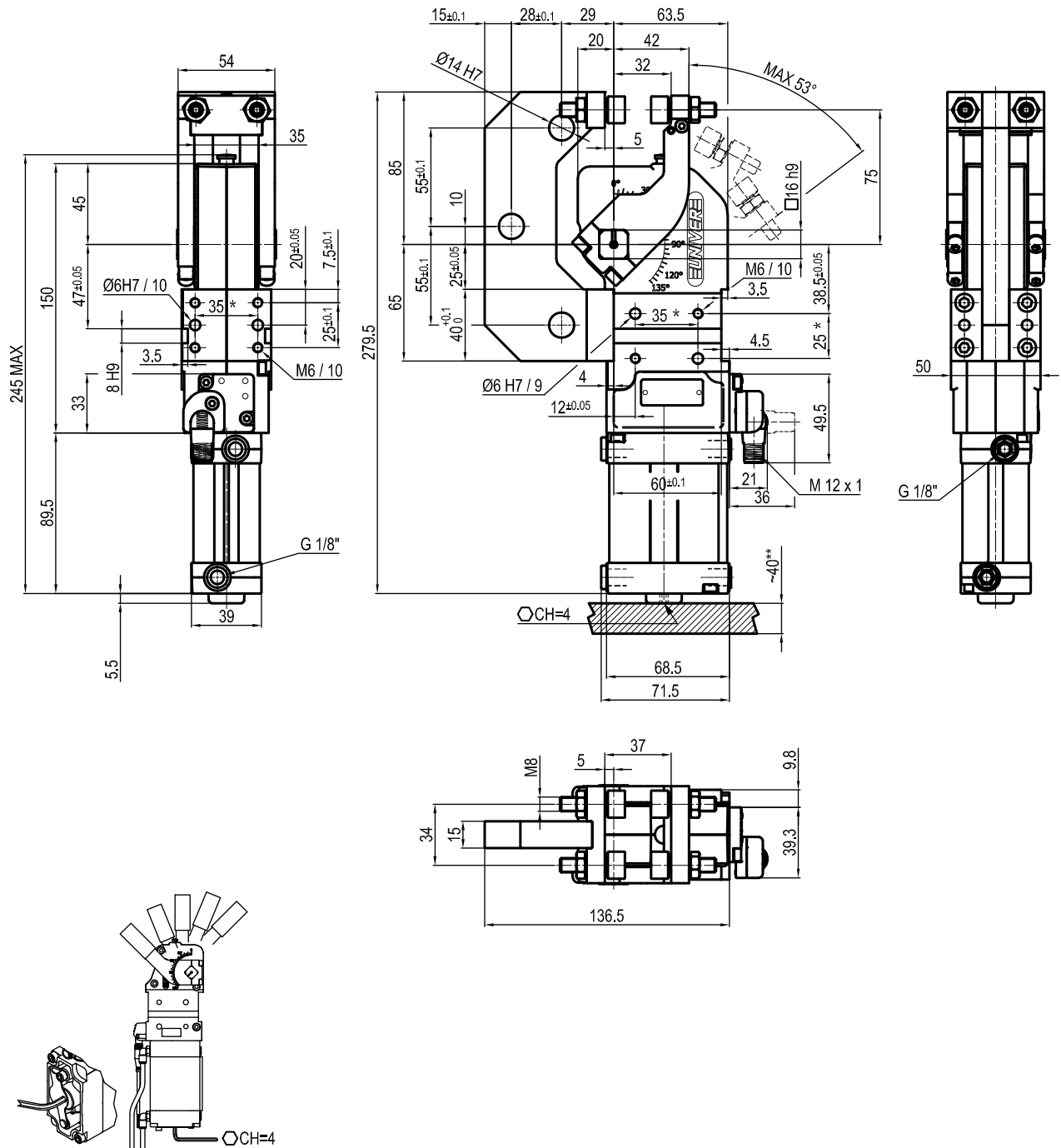
S = Steel jaws

7 Sensor	8 Product revision
-----------------	---------------------------

N = No sensor (with protection plate)
K = Electronic sensor PNP (optical) (DF-K)
D = Pneumatic sensor
J = Electronic sensor NPN (optical) (DF-J)
Y = Electronic sensor PNP (optical) (DF-Y) white led

Assigned by UNIVER

UGP40OLSK0



Bore Ø	Holding moment	Clamping moment (0,5 Mpa)	Weight (Tips not included)	Tip weight (each one)
40 mm	600 Nm	170 N	2,1 Kg	0,3 Kg

* : TOLERANCE BETWEEN DOWELS $\pm 0,02$, BETWEEN SCREW HOLES $\pm 0,1$

** : AREA TO ACCESS ANGLE ADJUSTMENT

Min./Max. operating pressure: **0,4 / 0,6 MPa**

Operating temperature: **5° ± 45° C**

Opening angle: **adjustable from 0° to 53°**

With steel arm

Electronic sensor with M12 swivel connector, from 0° to 90°, in steps of 10°

Supply voltage: 10 ÷ 30 Vdc

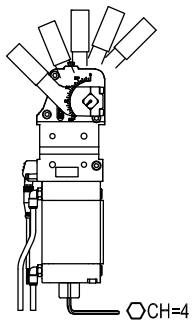
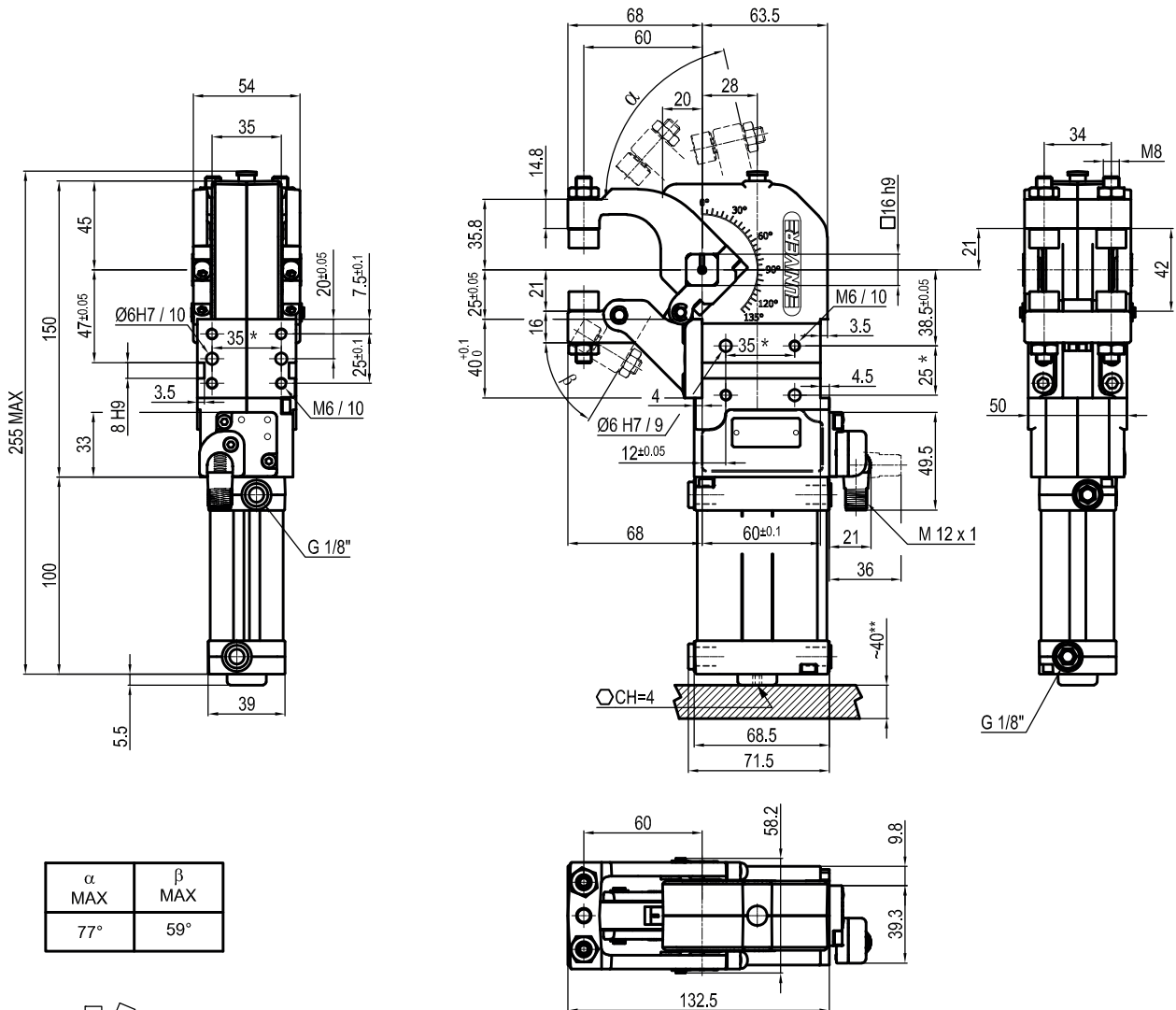
IP code: **IP 65**

Pneumatic ports on both sides

Beidseitige pneumatische Anschlüsse

Subject to technical modifications without notice

UGP40VBSK0



Bore Ø	Holding moment	Clamping moment (0,5 Mpa)	Weight (Tips not included)	Tip weight (each one)
40 mm	600 Nm	170 N	2,15 Kg	0,3 Kg

 Min./Max. operating pressure: **0,4 / 0,6 MPa**

 Operating temperature: **5° ÷ 45° C**

 Opening angle: **adjustable from 0° to 77°**

With steel arm

 Electronic sensor with M12 swivel connector, from 0° to 90°,
in steps of 10°

Supply voltage: 10 ÷ 30 Vdc

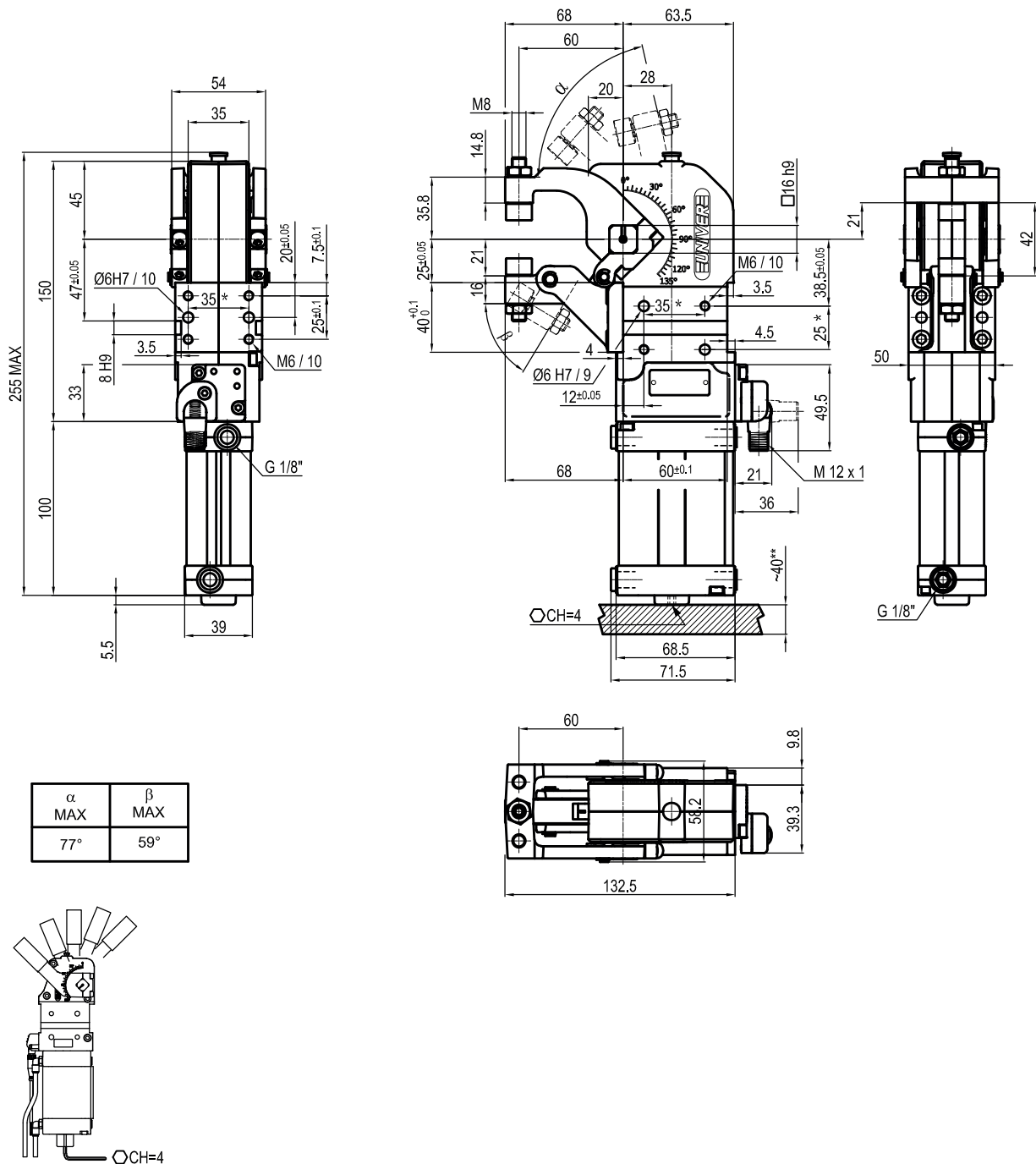
 IP code: **IP 65**

Pneumatic ports on both sides

 *: TOLERANCE BETWEEN DOWELS $\pm 0,02$, BETWEEN SCREW HOLES $\pm 0,1$

**: AREA TO ACCESS ANGLE ADJUSTMENT

Subject to technical modifications without notice

UGP40VFSK0


Bore Ø	Holding moment	Clamping moment (0,5 Mpa)	Weight (Tips not included)	Tip weight (each one)
40 mm	600 Nm	170 N	2,05 Kg	0,3 Kg

 Min./Max. operating pressure: **0,4 / 0,6 MPa**

 Operating temperature: **5° ÷ 45° C**

 Opening angle: **adjustable from 0° to 77°**

With steel arm

Electronic sensor with M12 swivel connector, from 0° to 90°, in steps of 10°

Supply voltage: 10 ÷ 30 Vdc

 IP code: **IP 65**

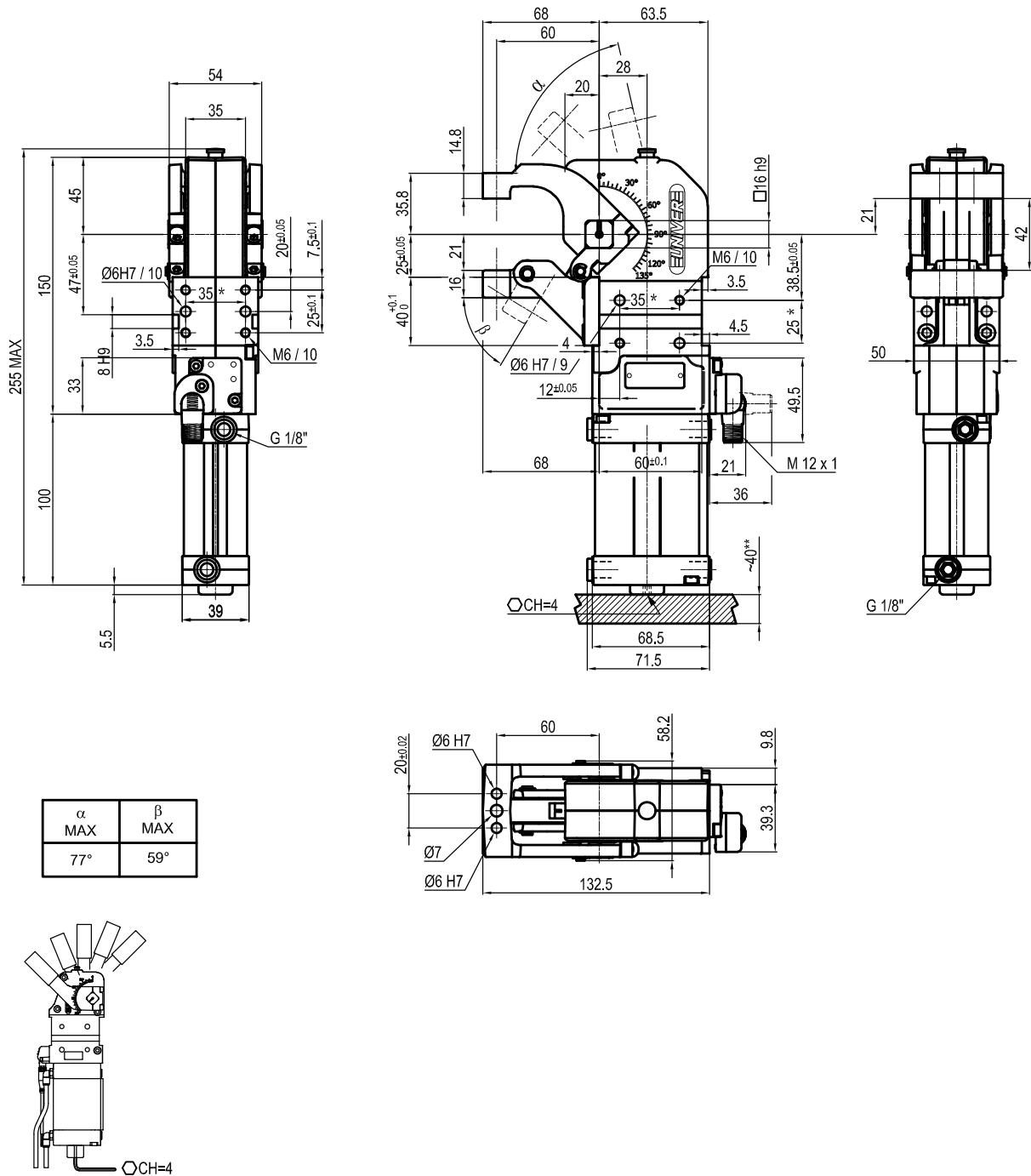
Pneumatic ports on both sides

*: TOLERANCE BETWEEN DOWELS ± 0,02, BETWEEN SCREW HOLES ± 0,1

**: AREA TO ACCESS ANGLE ADJUSTMENT

Subject to technical modifications without notice

UGP40VHSKO



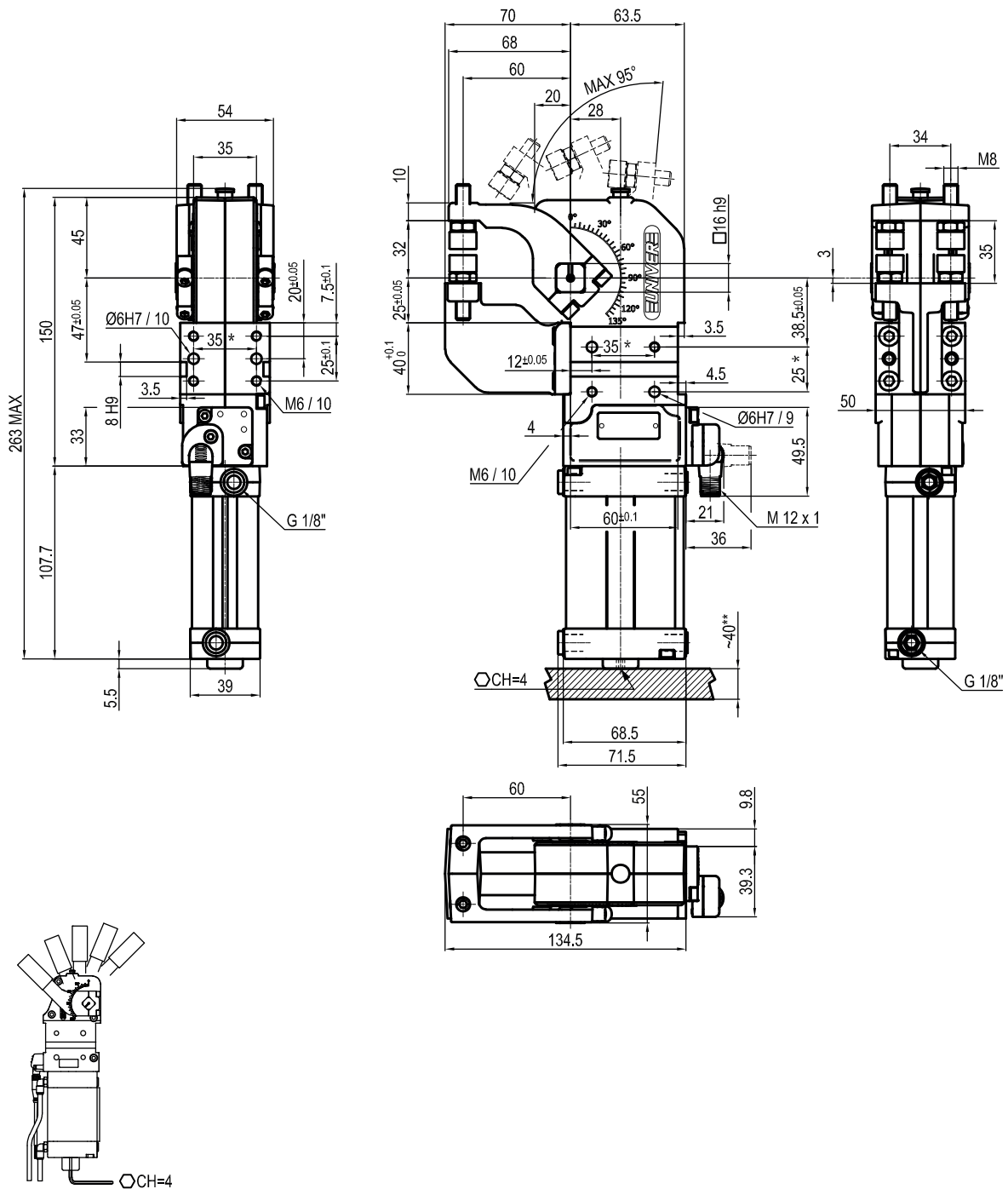
Bore \varnothing	Holding moment	Clamping moment (0,5 Mpa)	Weight (Tips not included)	Tip weight (each one)
40 mm	600 Nm	170 N	2,15 Kg	0,3 Kg

Min./Max. operating pressure: **0,4 / 0,6 MPa**
 Operating temperature: **5° ± 45° C**
 Opening angle: **adjustable from 0° to 77°**
 With steel arm
 Electronic sensor with M12 swivel connector, from 0° to 90°, in steps of 10°
 Supply voltage: 10 ÷ 30 Vdc
 IP code: **IP 65**
 Pneumatic ports on both sides

* : TOLERANCE BETWEEN DOWELS ± 0,02, BETWEEN SCREW HOLES ± 0,1
 **: AREA TO ACCESS ANGLE ADJUSTMENT

Subject to technical modifications without notice

UGP40VLSK0



Bore Ø	Holding moment	Clamping moment (0,5 Mpa)	Weight (Tips not included)	Tip weight (each one)
40 mm	600 Nm	170 N	2 Kg	0,3 Kg

*: TOLERANCE BETWEEN DOWELS $\pm 0,02$, BETWEEN SCREW HOLES $\pm 0,1$

** : AREA TO ACCESS ANGLE ADJUSTMENT

Subject to technical modifications without notice

Rev. 01 26.01.22

Min./Max. operating pressure: **0,4 / 0,6 MPa**

Operating temperature: **5° ÷ 45° C**

Opening angle: **adjustable from 0° to 95°**

With steel arm

Electronic sensor with M12 swivel connector, from 0° to 90°, in steps of 10°

Supply voltage: 10 ÷ 30 Vdc

IP code: **IP 65**

Pneumatic ports on both sides

Beidseitige pneumatische Anschlüsse