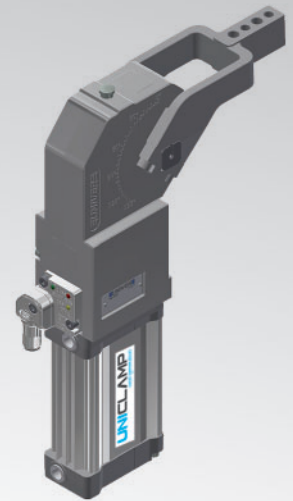
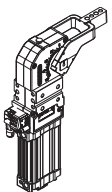
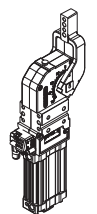
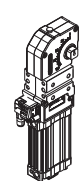


UCIP40

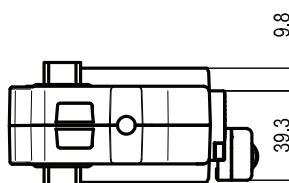
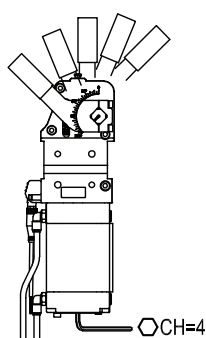
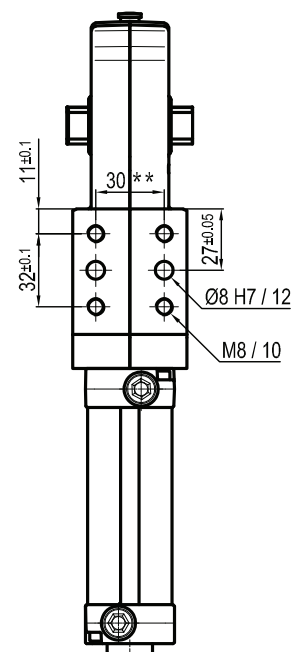
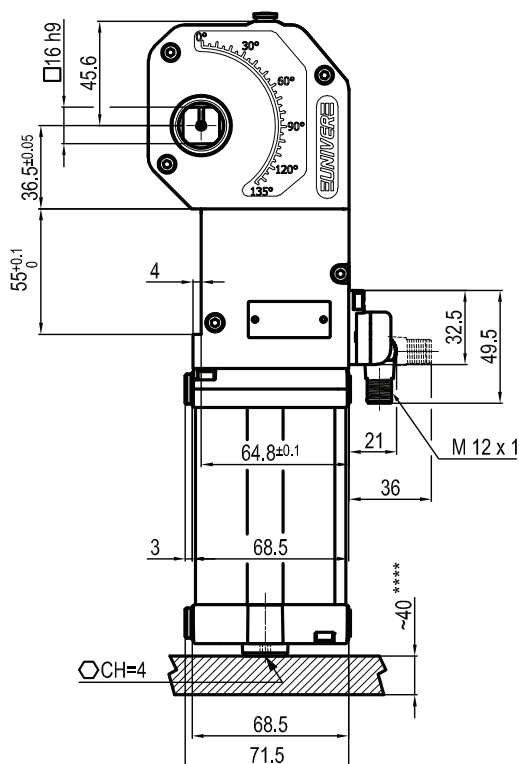
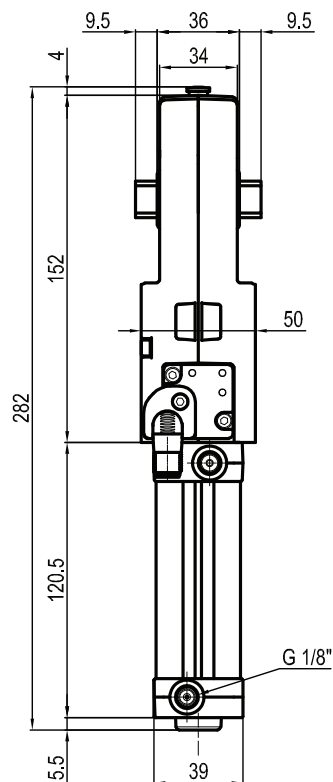
UNICLAMP Power Clamp



U	C	I	P	4	0	O	E	A	N	K	0
1	2	3	4	5	6	7	8	9	10		

1 Serie	2 Standard	3 Version	4 Size
UC = UNICLAMP Power clamp fully adjustable opening angle: 0° to 135° Max The opening angle range may vary according to the arm position and style	I = Interchangeable with size 50/63	P = Pneumatic	40 = Ø 40 mm
5 Arm position	6 Arm style	7 Arm type	8 Option
V = 90° 	O = 180° 	N = No arm 	N = Standard A = Preset for self-holding system
	C = Central, 15 mm Offset D = Right, 15 mm Offset S = Left, 15 mm Offset E = Central, 45 mm Offset F = Right, 45 mm Offset L = Left, 45 mm Offset N = No arm	A = Aluminum S = Steel N = No arm	9 Sensor N = No sensor (with protection plate) K = Electronic sensor PNP (optical) (DF-K) D = Pneumatic sensor J = Electronic sensor NPN (optical) (DF-J) Y = Electronic sensor PNP (optical) (DF-Y) white led
		10 Product revision Assigned by UNIVER	

UCIP40NNNK0



Bore Ø	Holding moment	Clamping moment (0,5 MPa)	Weight (clamping arm not included)
40 mm	600 Nm	170 Nm	1,6 Kg

* : TOLERANCE BETWEEN DOWELS ± 0,02, BETWEEN SCREW HOLES ± 0,1

** : AREA TO ACCESS ANGLE ADJUSTMENT

Min./Max. operating pressure: **0,4 / 0,6 MPa**

Operating temperature: **5° ÷ 45° C**

Opening angle: **adjustable**

Without arm

Electronic sensor with M12 swivel connector, from 0° to 90°, in steps of 10°

Supply voltage: 10 ÷ 30 Vdc

IP code: **IP 65**

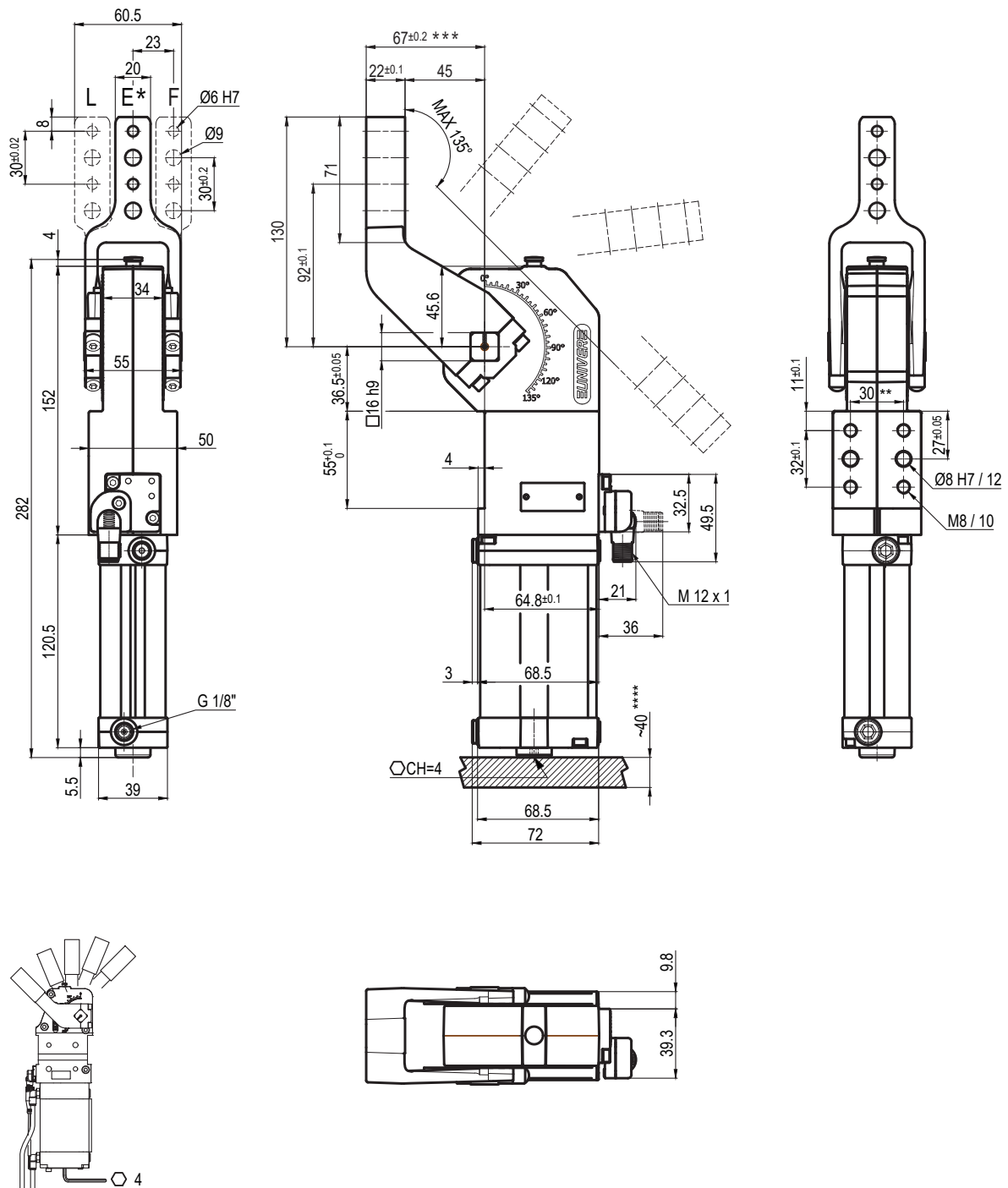
Pneumatic ports on both sides

Subject to technical modifications without notice

Rev. 00 19.05.20

UCIP40O__NK0

45 mm



Bore Ø	Holding moment	Clamping moment (0,5 MPa)	Weight (clamping arm not included)
40 mm	600 Nm	170 Nm	1,6 Kg

* : "E" CENTRAL - Ø50 / Ø63 mm SIZES COMPATIBLE

** : TOLERANCE BETWEEN DOWELS ± 0,02, BETWEEN SCREW HOLES ± 0,1

*** : TOLERANCE AT 80 mm FROM PIVOT POINT

**** : AREA TO ACCESS ANGLE ADJUSTMENT

Subject to technical modifications without notice

Rev. 00 12.10.18

Min./Max. operating pressure: **0,4 / 0,6 MPa**

Operating temperature: **5° ÷ 45° C**

Opening angle: **adjustable from 0° to 135°**

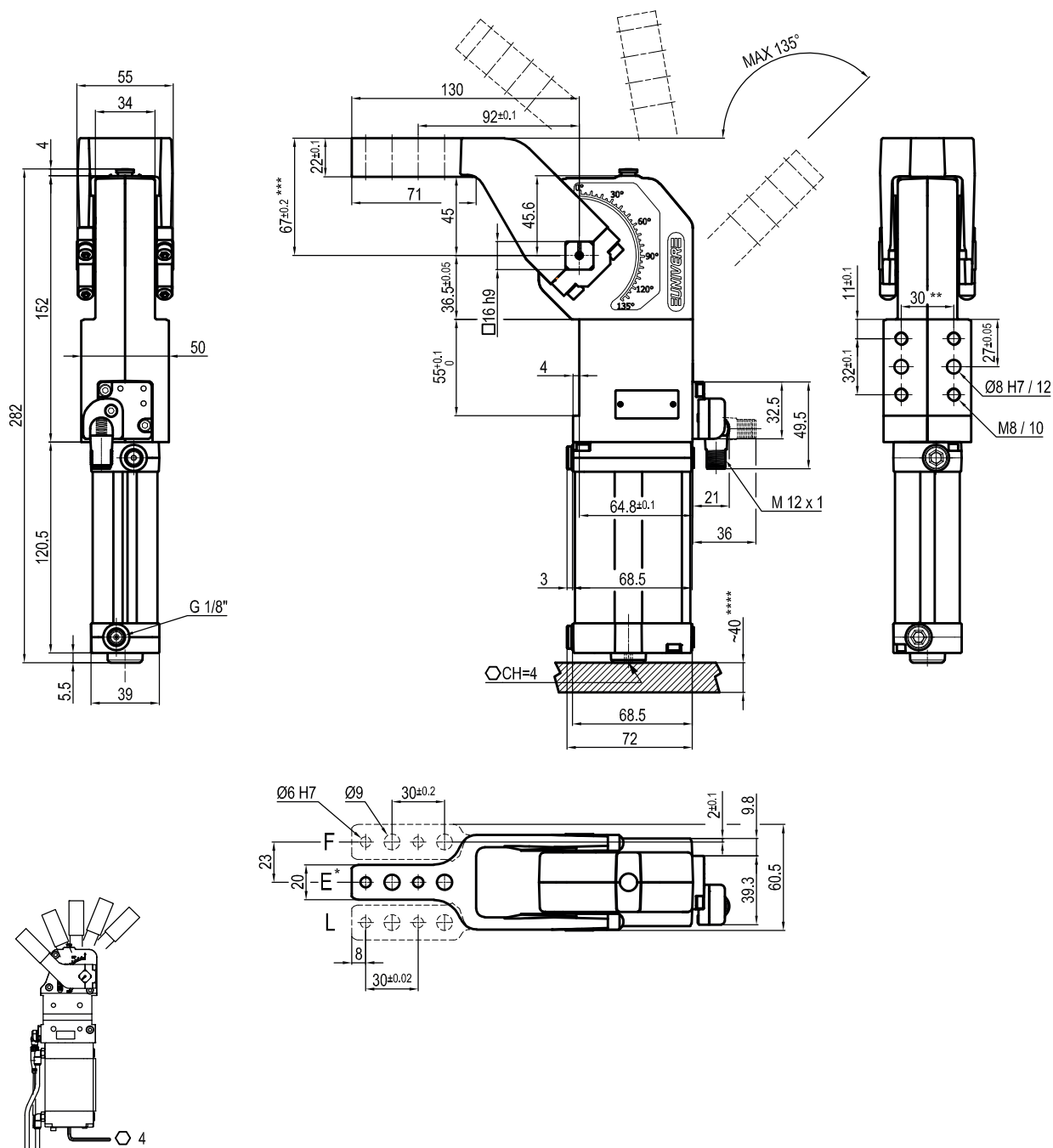
Arm position: **180°**

Electronic sensor with M12 swivel connector that can be orientated at 0° or 90°

Supply voltage: 10 ÷ 30 Vdc

IP code: **IP 65**

Pneumatic ports on both sides



Bore Ø	Holding moment	Clamping moment (0,5 MPa)	Weight (clamping arm not included)
40 mm	600 Nm	170 Nm	1,6 Kg

* : "E" CENTRAL - Ø50 / Ø63 mm SIZES COMPATIBLE

** : TOLERANCE BETWEEN DOWELS ± 0,02, BETWEEN SCREW HOLES ± 0,1

*** : TOLERANCE AT 80 mm FROM PIVOT POINT

**** : AREA TO ACCESS ANGLE ADJUSTMENT

Min./Max. operating pressure: **0,4 / 0,6 MPa**

Operating temperature: **5° ÷ 45° C**

Opening angle: **adjustable from 0° to 135°**

Arm position: **90°**

Electronic sensor with M12 swivel connector that can be orientated at 0° or 90°

Supply voltage: 10 ÷ 30 Vdc

IP code: **IP 65**

Pneumatic ports on both sides