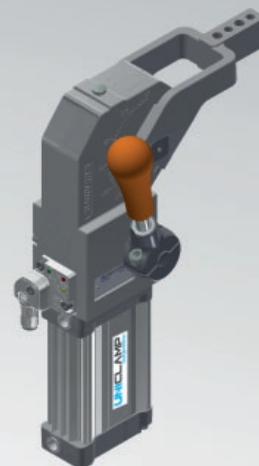


UCIM40

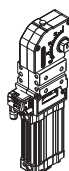
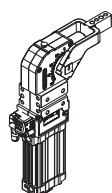
UNICLAMP Power clamp with hand lever



U	C	I	M	4	0	O	E	A	N	K	0
1	2	3	4	5	6	7	8	9	10		

1 Serie	2 Standard	3 Version	4 Size
UC = UNICLAMP Power clamp fully adjustable opening angle: 0° to 135° Max The opening angle range may vary according to the arm position and style	I = Interchangeable with Size 50/63	M = Pneumatic with hand lever	40 = Ø 40 mm

5 Arm position	6 Arm style	7 Arm type
V = 90° O = 180° N = No arm	C = Central, 15 mm Offset D = Right, 15 mm Offset S = Left, 15 mm Offset E = Central, 45 mm Offset F = Right, 45 mm Offset L = Left, 45 mm Offset N = No arm	A = Aluminum S = Steel N = No arm



8 Option	9 Sensor	10 Product revision
N = Standard A = Preset for self-holding system	N = No sensor (with protection plate) K = Electronic sensor PNP (optical) (DF-K) D = Pneumatic sensor J = Electronic sensor NPN (optical) (DF-J) Y = Electronic sensor PNP (optical) (DF-Y) white led	Assigned by UNIVER

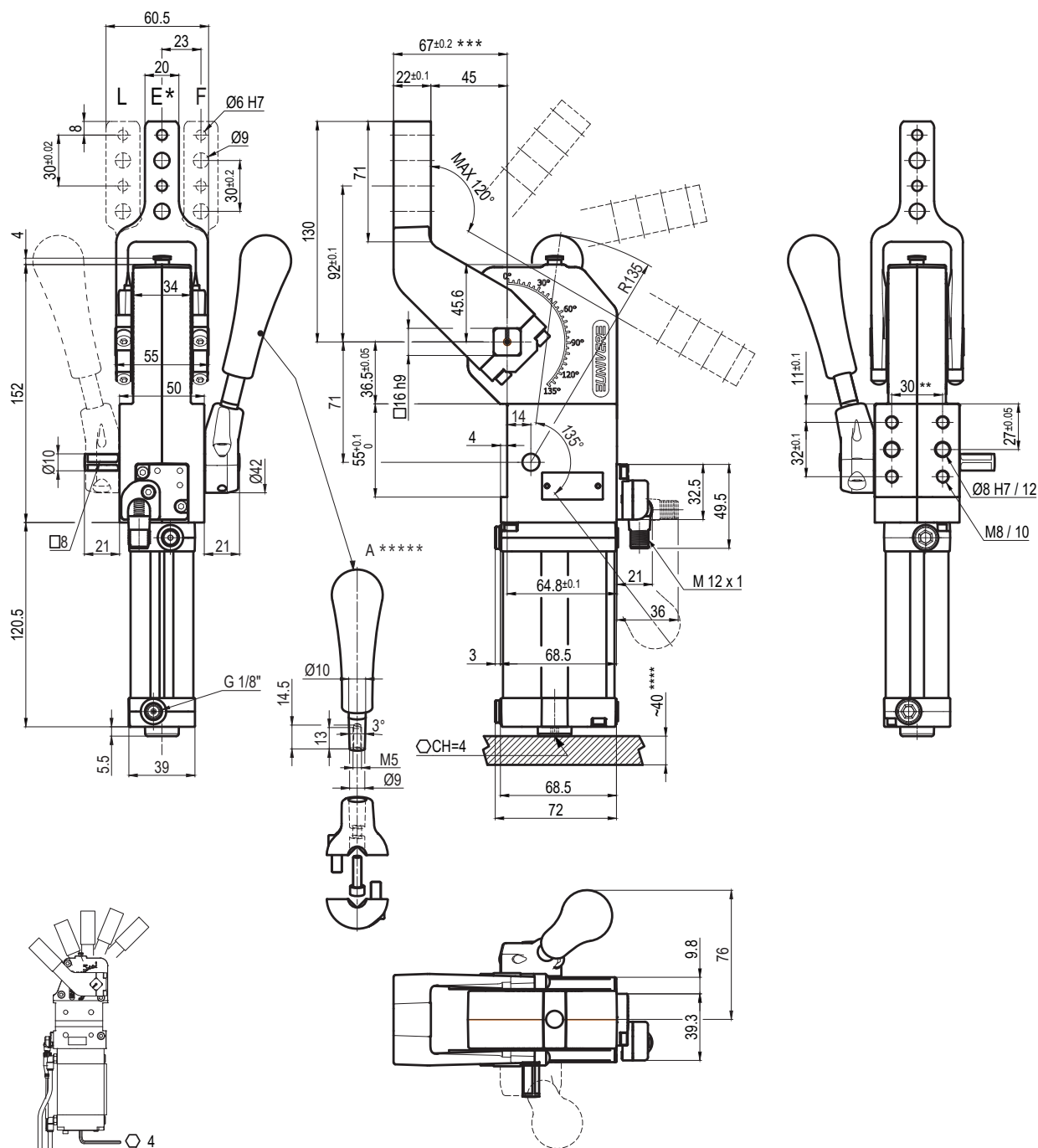
[illegible]

Bore Ø	Holding moment	Clamping moment (0,5 MPa)	Weight (clamping arm not included)
40 mm	600 Nm	170 Nm	2,1 Kg

Min./Max. operating pressure: **0,4 / 0,6 MPa**
 Operating temperature: **5° ÷ 45° C**
 Opening angle: **adjustable**
 Without arm
 Electronic sensor with M12 swivel connector, from 0° to 90°,
 in steps of 10°
 Supply voltage: 10 ÷ 30 Vdc
 IP code: **IP 65**
 Pneumatic ports on both sides

UCIM400__ NK0

45 mm



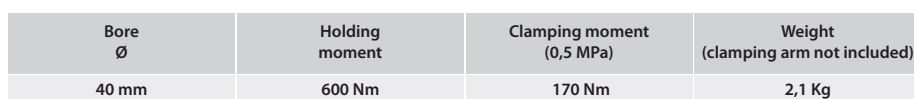
Bore Ø	Holding moment	Clamping moment (0,5 MPa)	Weight (clamping arm not included)
40 mm	600 Nm	170 Nm	2,1 Kg

* : "E" CENTRAL - Ø50 / Ø63 mm SIZES COMPATIBLE
 ** : TOLERANCE BETWEEN DOWELS ± 0,02, BETWEEN SCREW HOLES ± 0,1
 *** : TOLERANCE AT 80 mm FROM PIVOT POINT
 **** : AREA TO ACCESS ANGLE ADJUSTMENT
 ***** : DIMENSIONS TO BE RESPECTED IN CASE OTHER MANUAL LEVERS ARE USED

Min./Max. operating pressure: **0,4 / 0,6 MPa**
 Operating temperature: **5° ÷ 45° C**
 Opening angle: **adjustable from 0° to 120°**
 Arm position: **180°**
 With manual lever
 Electronic sensor with M12 swivel connector, from 0° to 90°, in steps of 10°
 Supply voltage: 10 ÷ 30 Vdc
 IP code: **IP 65**
 Pneumatic ports on both sides

Subject to technical modifications without notice

45 mm



Min./Max. operating pressure: **0,4 / 0,6 MPa**
 Operating temperature: **5° ÷ 45° C**
 Opening angle: **adjustable from 0° to 120°**
 Arm position: **90°**
 With hand lever
 Electronic sensor with M12 swivel connector, from 0° to 90°,
 in steps of 10°
 Supply voltage: 10 ÷ 30 Vdc
 IP code: **IP 65**
 Pneumatic ports on both sides

Rev. 01 27.03.19