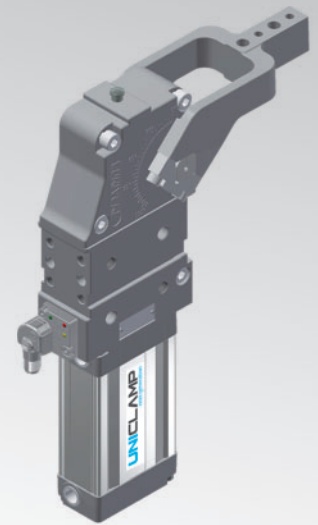


UCBP50

UNICLAMP Power Clamp



U	C	B	P	5	0	O	E	A	K	0
1	2	3	4	5	6	7	8	9		

1 Series	2 Standard	3 Version	4 Size
----------	------------	-----------	--------

UC = UNICLAMP Power clamp
 fully adjustable opening angle:
 0° to 135° Max
 The opening angle range may vary
 according to the arm position and style

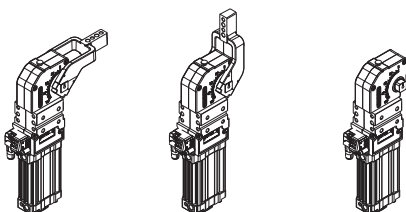
B = European standard

P = Pneumatic

50 = Ø 50 mm

5 Arm position	6 Arm style
----------------	-------------

V = 90° **O = 180°** **N = No arm**



C = Central, 15 mm Offset
D = Right, 15 mm Offset
S = Left, 15 mm Offset
E = Central, 45 mm Offset
F = Right, 45 mm Offset
L = Left, 45 mm Offset
X* = Central, oversized dowel holes Ø 8 H7, 15 mm Offset
Y* = Right, oversized dowel holes Ø 8 H7, 15 mm Offset
Z* = Left, oversized dowel holes Ø 8 H7, 15 mm Offset
T* = Central, oversized dowel holes Ø 8 H7, 45 mm Offset
U* = Right, oversized dowel holes Ø 8 H7, 45 mm Offset
V* = Left, oversized dowel holes Ø 8 H7, 45 mm Offset
N = No arm

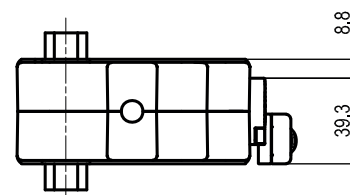
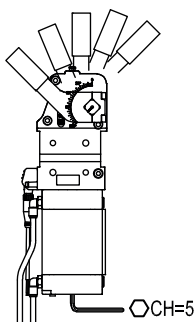
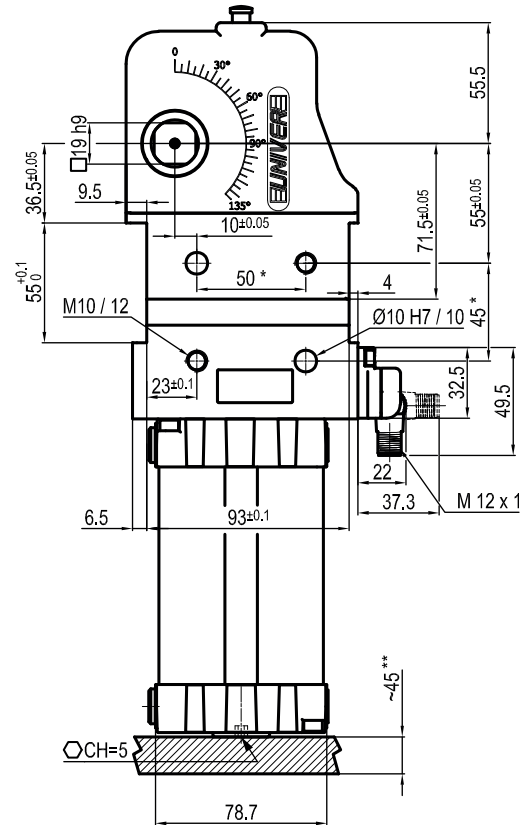
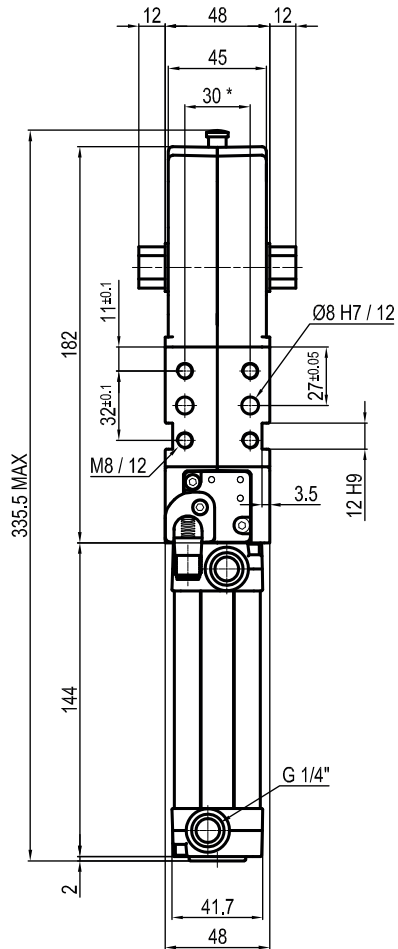
* = Available upon request

7 Arm type	8 Sensor	9 Product revision
------------	----------	--------------------

A = Aluminum
S = Steel
N = No arm

N = No sensor (with protection plate)
K = Electronic sensor PNP (optical) (DF-K)
D = Pneumatic sensor
J = Electronic sensor NPN (optical) (DF-J)
Y = Electronic sensor PNP (optical) (DF-Y) white led

Assigned by UNIVER

UCBP50NNNK0


Bore Ø	Holding moment	Clamping moment (0,5 MPa)	Weight (clamping arm not included)
50 mm	1250 Nm	280 Nm	2,5 Kg

 Min./Max. operating pressure: **0,4 / 0,6 MPa**

 Operating temperature: **5° ÷ 45° C**

 Opening angle: **adjustable**

Without arm

Electronic sensor with M12 swivel connector, from 0° to 90°, in steps of 10°

Supply voltage: 10 ÷ 30 Vdc

 IP code: **IP 65**

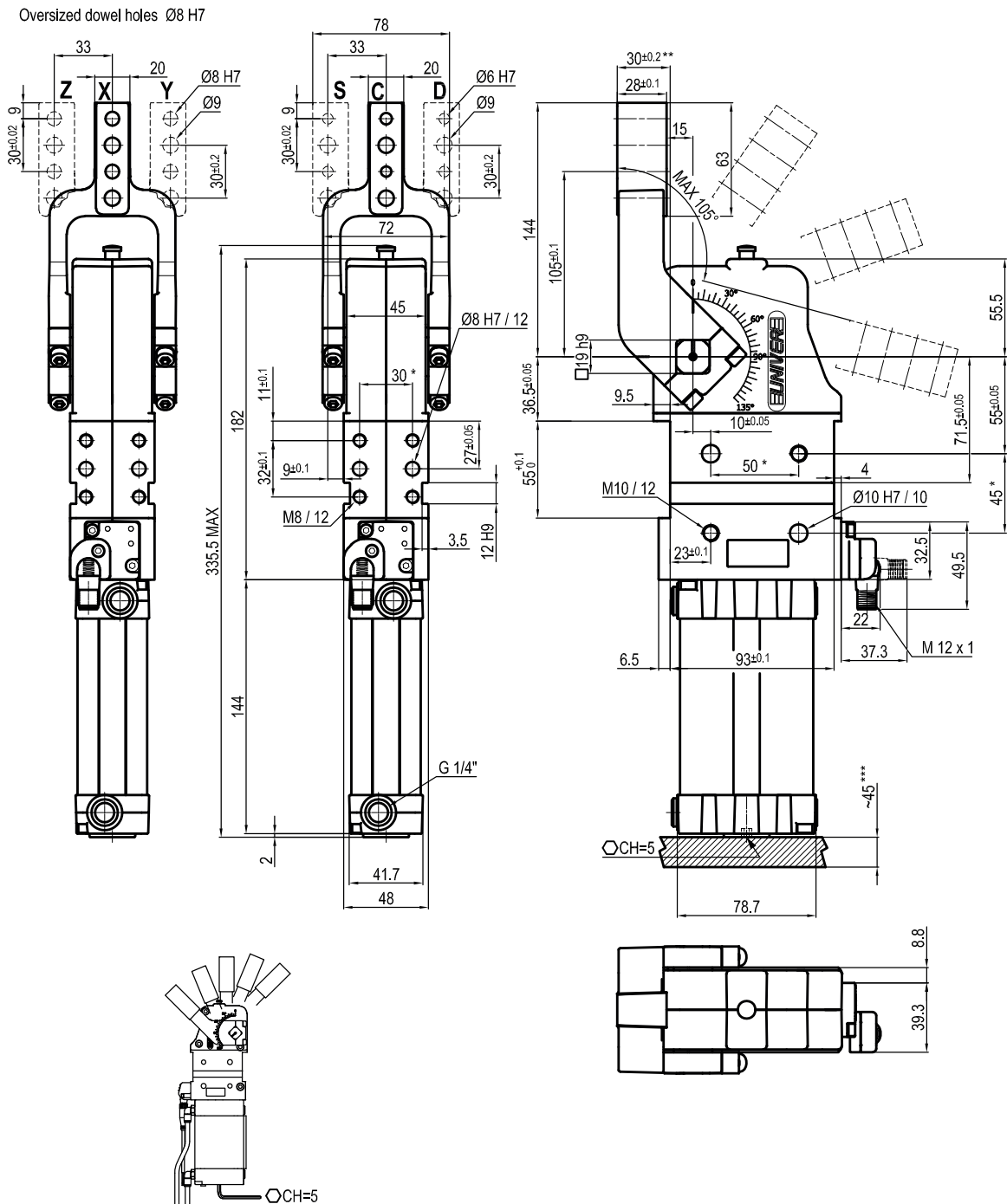
Pneumatic ports on both sides

*: TOLERANCE BETWEEN DOWELS ± 0,02, BETWEEN SCREW HOLES ± 0,1

**: AREA TO ACCESS ANGLE ADJUSTMENT

Subject to technical modifications without notice

Rev. 02 26.01.22



Bore Ø	Holding moment	Clamping moment (0,5 MPa)	Weight (clamping arm not included)
50 mm	1250 Nm	280 Nm	2,5 Kg

Min./Max. operating pressure: **0,4 / 0,6 MPa**

Operating temperature: **5° ÷ 45° C**

Opening angle: **adjustable from 0° to 105°**

Arm position: **180°**

Electronic sensor with M12 swivel connector, from 0° to 90°, in steps of 10°

Supply voltage: 10 ÷ 30 Vdc

IP code: **IP 65**

Pneumatic ports on both sides

* : TOLERANCE BETWEEN DOWELS ± 0,02, BETWEEN SCREW HOLES ± 0,1

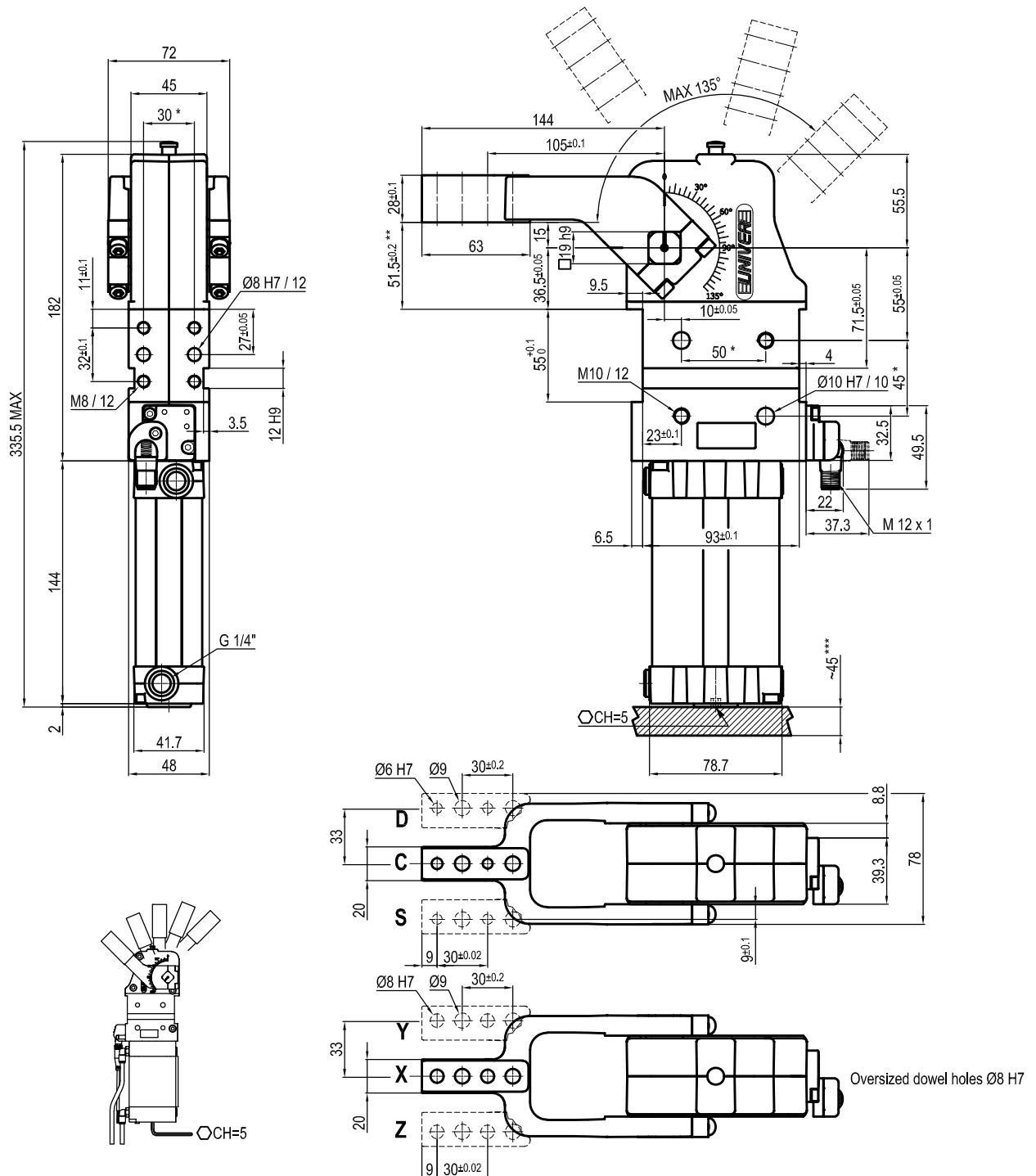
** : TOLERANCE AT 80 mm FROM PIVOT POINT

*** : AREA TO ACCESS ANGLE ADJUSTMENT

Subject to technical modifications without notice

UCBP50V__K0

15 mm



Bore Ø	Holding moment	Clamping moment (0,5 MPa)	Weight (clamping arm not included)
50 mm	1250 Nm	280 Nm	2,5 Kg

 Min./Max. operating pressure: **0,4 / 0,6 MPa**

 Operating temperature: **5° ÷ 45° C**

 Opening angle: **adjustable from 0° to 135°**

 Arm position: **90°**

External stop

Electronic sensor with M12 swivel connector, from 0° to 90°,

in steps of 10°

Supply voltage: 10 ÷ 30 Vdc

 IP code: **IP 65**

*: TOLERANCE BETWEEN DOWELS ± 0,02, BETWEEN SCREW HOLES ± 0,1

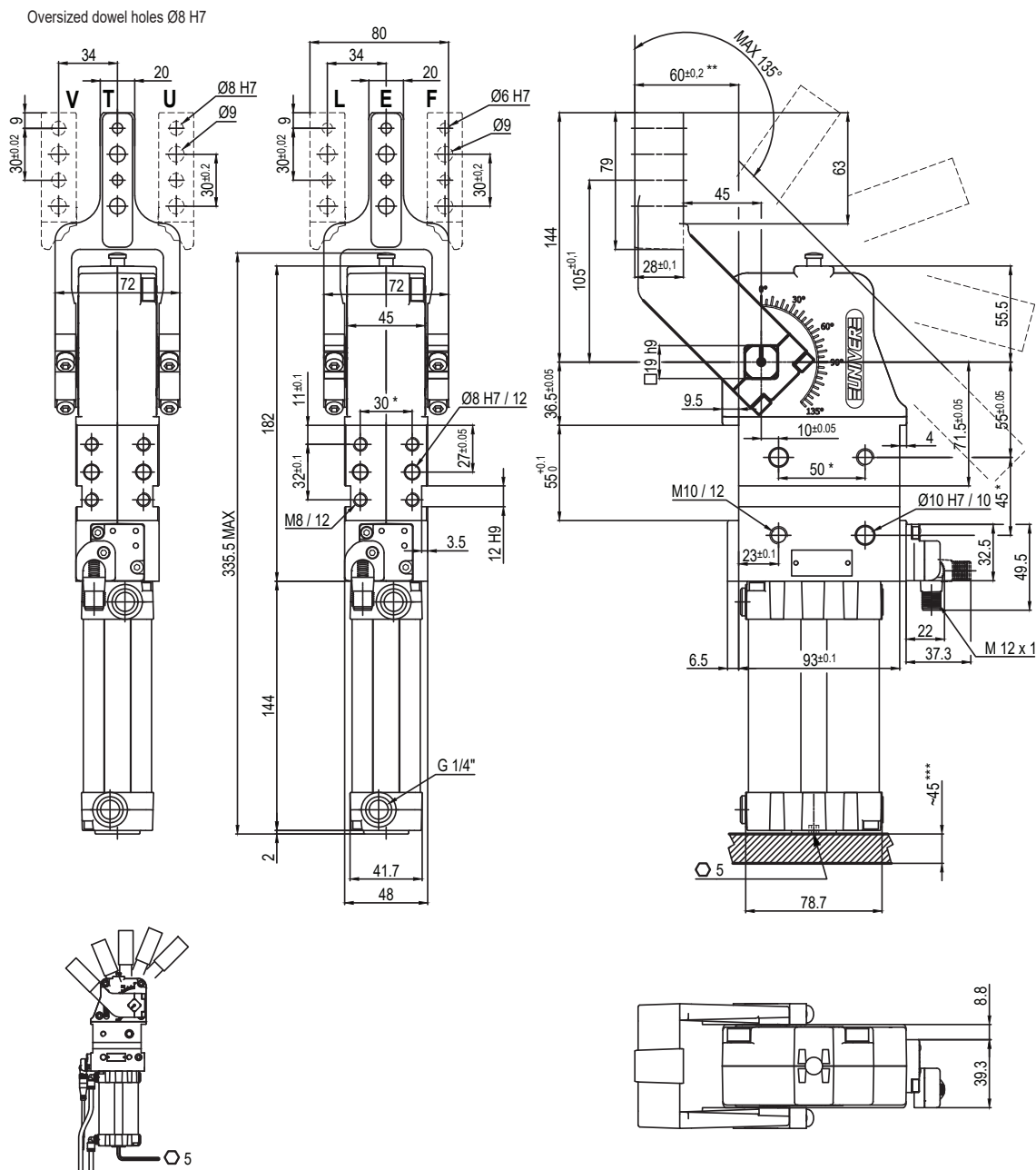
**: TOLERANCE AT 80 mm FROM PIVOT POINT

***: AREA TO ACCESS ANGLE ADJUSTMENT

Subject to technical modifications without notice

UCBP500__K0

45 mm



Bore Ø	Holding moment	Clamping moment (0,5 MPa)	Weight (clamping arm not included)
50 mm	1250 Nm	280 Nm	2,5 Kg

* : TOLERANCE BETWEEN DOWELS $\pm 0,02$, BETWEEN SCREW HOLES $\pm 0,1$

** : TOLERANCE AT 80 mm FROM PIVOT POINT

*** : AREA TO ACCESS ANGLE ADJUSTMENT

Min./Max. operating pressure: **0,4 / 0,6 MPa**

Operating temperature: **5° ÷ 45° C**

Opening angle: **adjustable from 0° to 135°**

Arm position: **180°**

Electronic sensor with M12 swivel connector, from 0° to 90°, in steps of 10°

Supply voltage: 10 ÷ 30 Vdc

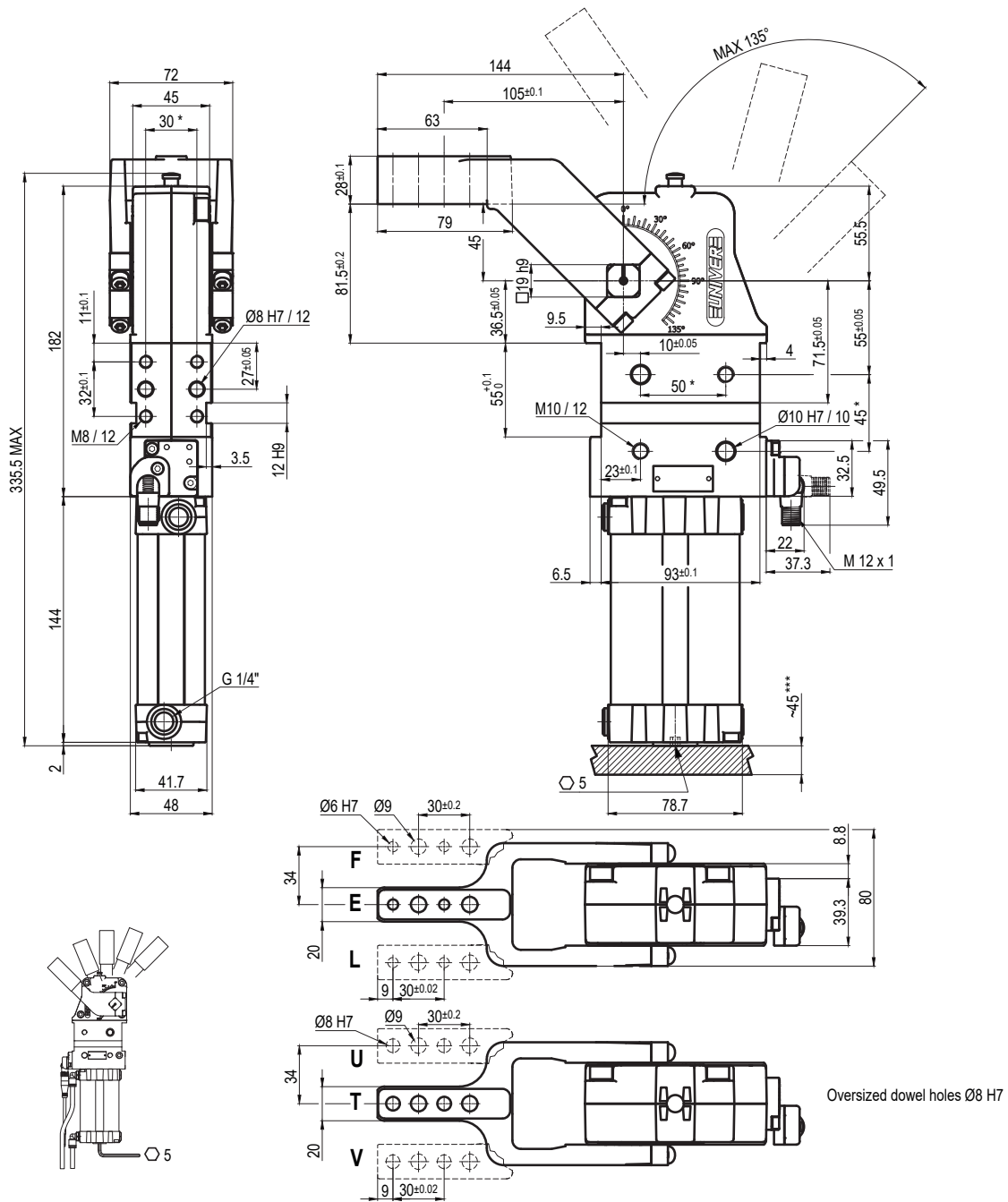
IP code: **IP 65**

Pneumatic ports on both sides

Subject to technical modifications without notice

UCBP50V__K0

45 mm



Bore Ø	Holding moment	Clamping moment (0,5 MPa)	Weight (clamping arm not included)
50 mm	1250 Nm	280 Nm	2,5 Kg

Min./Max. operating pressure: **0,4 / 0,6 MPa**
 Operating temperature: **5° ÷ 45° C**
 Opening angle: **adjustable from 0° to 135°**
 Arm position: **90°**
 Electronic sensor with M12 swivel connector, from 0° to 90°, in steps of 10°
 Supply voltage: 10 ÷ 30 Vdc
 IP code: **IP 65**
 Pneumatic ports on both sides

* : TOLERANCE BETWEEN DOWELS ± 0,02, BETWEEN SCREW HOLES ± 0,1

** : TOLERANCE AT 80 mm FROM PIVOT POINT

*** : AREA TO ACCESS ANGLE ADJUSTMENT

Subject to technical modifications without notice