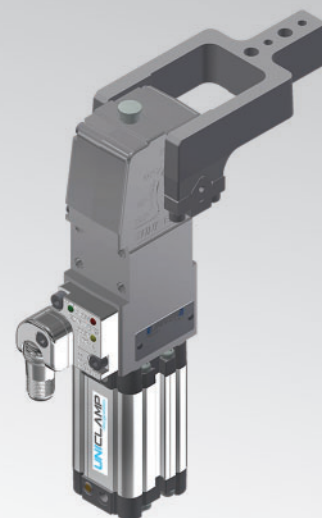


UCBP25

UNICLAMP Miniclamp



U	C	B	P	2	5	O	B	A	K	0
1	2	3	4	5	6	7	8	9		

1 Serie	2 Standard	3 Versione	4 Taglia
---------	------------	------------	----------

UC = Unità di bloccaggio UNICLAMP con regolazione continua angolo d'apertura da: **0° a 105° Max**
L'angolo di apertura può variare a seconda della posizione e della tipologia del pressore

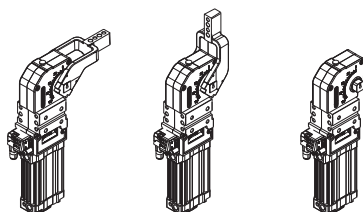
B = Standard europeo

P = Pneumatica

25 = Ø 25 mm

5 Posizione pressore	6 Tipo di pressore	7 Materiale pressore
----------------------	--------------------	----------------------

V = 90° **O** = 180° **N** = Senza pressore



B = Centrale, 0 mm Offset
C = Centrale, 10 mm Offset
N = Senza pressore

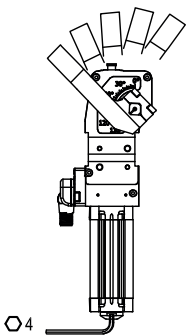
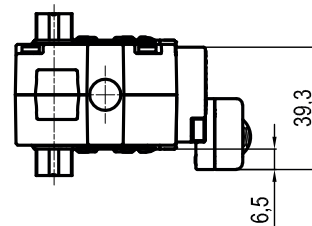
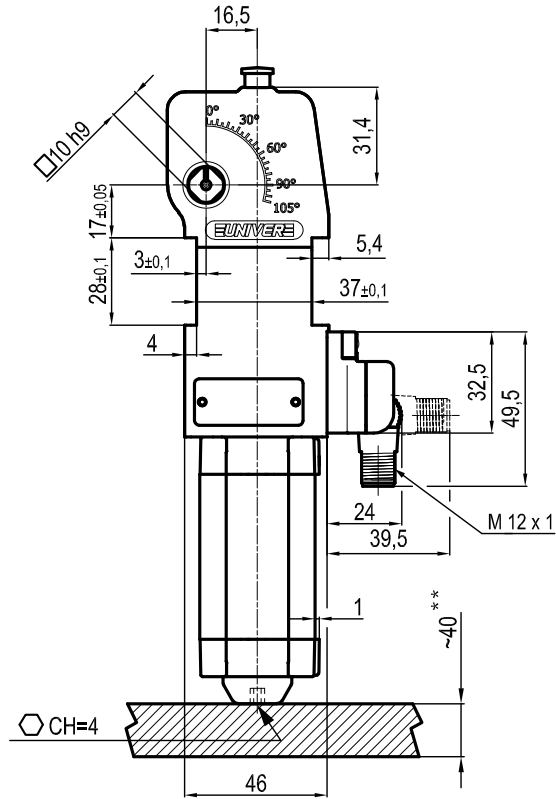
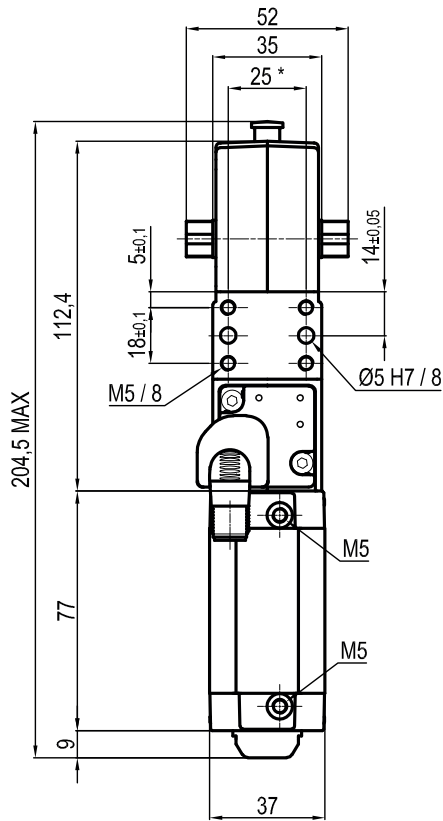
A = Alluminio
N = Senza pressore

8 Sensore	9 Revisione prodotto
-----------	----------------------

N = Senza sensore (con piastra di chiusura)
K = Sensore elettronico PNP (ottico) (DF-K)
D = Sensore pneumatico
J = Sensore elettronico NPN (ottico) (DF-J)
Y = Sensore elettronico PNP (ottico) (DF-Y) led bianco

Assegnato da UNIVER

UCBP25NNNK0



Bore Ø	Holding moment	Clamping moment (0,5 MPa)	Weight (clamping arm not included)
25 mm	75 Nm	25 Nm	0,8 Kg

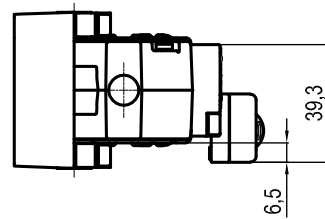
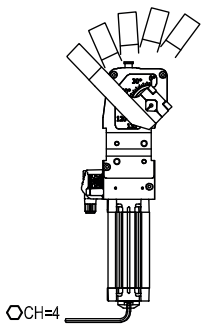
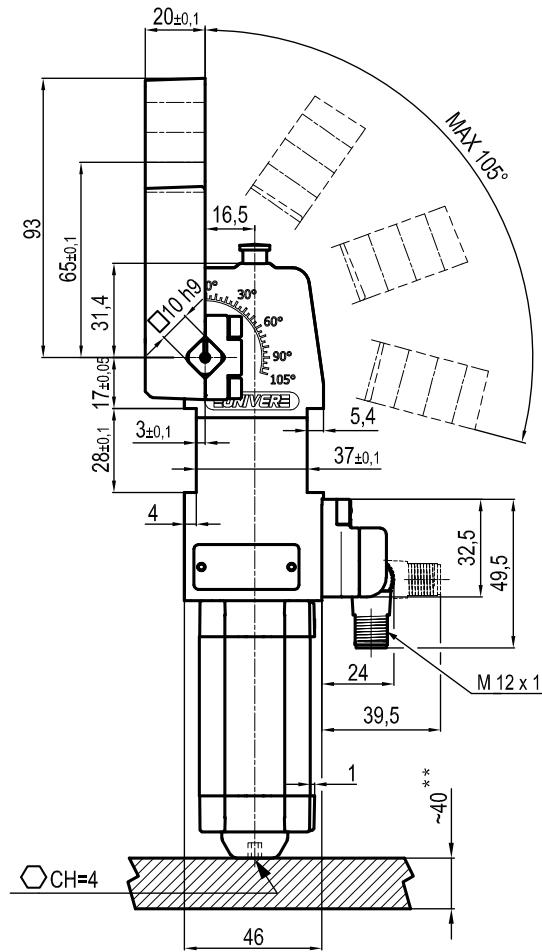
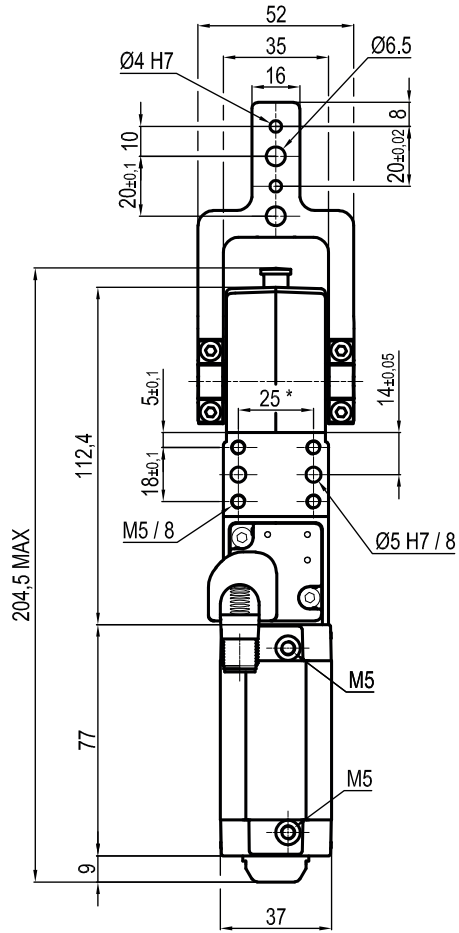
Min./Max. operating pressure: **0,4 / 0,6 MPa**
 Operating temperature: **5° ÷ 45° C**
 Opening angle: **adjustable**
 Without arm
 Electronic sensor with M12 swivel connector, from 0° to 90°, in steps of 10°
 Supply voltage: 10 ÷ 30 Vdc
 IP code: **IP 65**

* : TOLERANCE BETWEEN DOWELS ± 0,02, BETWEEN SCREW HOLES ± 0,1
 **: AREA TO ACCESS ANGLE ADJUSTMENT

Subject to technical modifications without notice

UCBP25OB_K0

0 mm



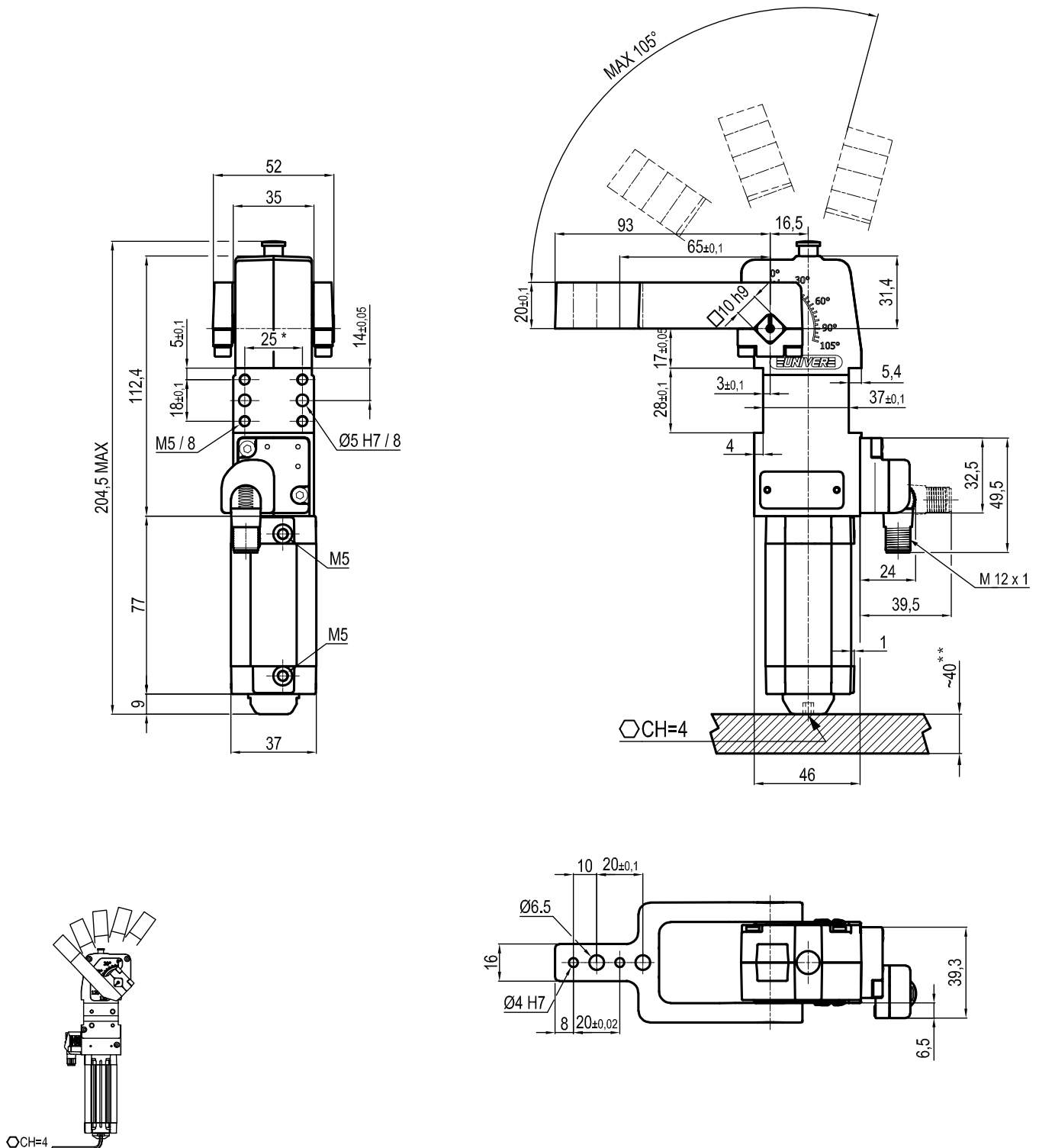
Bore Ø	Holding moment	Clamping moment (0,5 MPa)	Weight (clamping arm not included)
25 mm	75 Nm	25 Nm	0,8 Kg

Min./Max. operating pressure: **0,4 / 0,6 MPa**
 Operating temperature: **5° ÷ 45° C**
 Opening angle: **adjustable from 0° to 105°**
 Arm position: **180°**
 Electronic sensor with M12 swivel connector, from 0° to 90°, in steps of 10°
 Supply voltage: 10 ÷ 30 Vdc
 IP code: **IP 65**

* : TOLERANCE BETWEEN DOWELS ± 0,02, BETWEEN SCREW HOLES ± 0,1
 **: AREA TO ACCESS ANGLE ADJUSTMENT

UCBP25VB_K0

0 mm



Bore Ø	Holding moment	Clamping moment (0,5 MPa)	Weight (clamping arm not included)
25 mm	75 Nm	25 Nm	0,8 Kg

 *: TOLERANCE BETWEEN DOWELS $\pm 0,02$, BETWEEN SCREW HOLES $\pm 0,1$

**: AREA TO ACCESS ANGLE ADJUSTMENT

 Min./Max. operating pressure: **0,4 / 0,6 MPa**

 Operating temperature: **5° ÷ 45° C**

 Opening angle: **adjustable from 0° to 105°**

 Arm position: **90°**

Electronic sensor with M12 swivel connector, from 0° to 90°, in steps of 10°

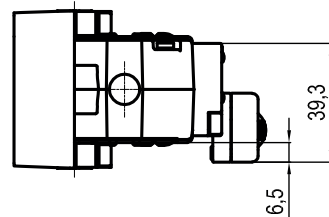
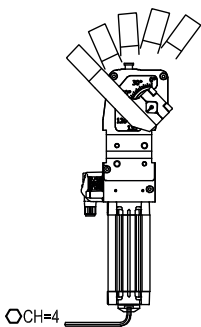
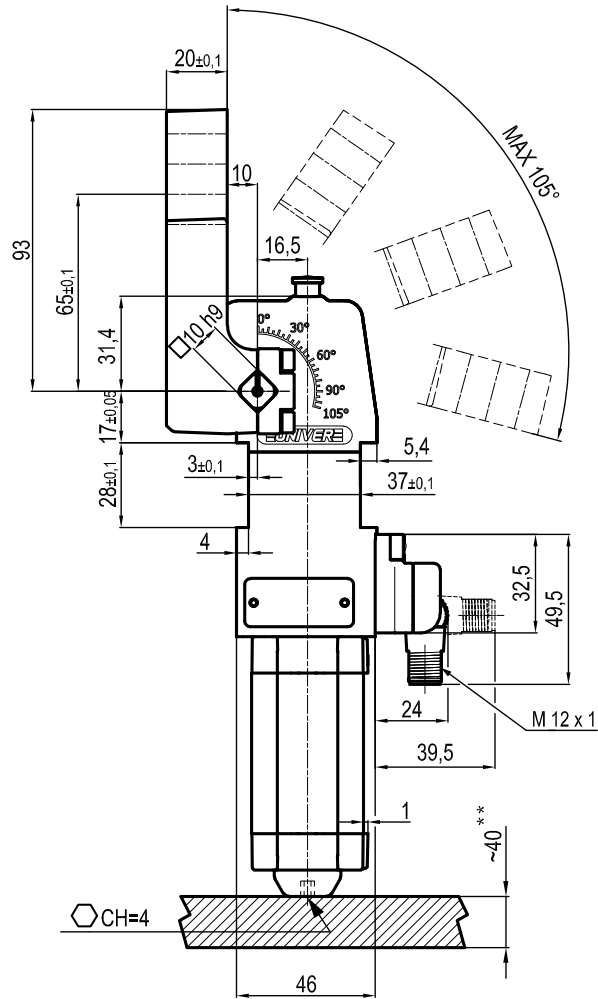
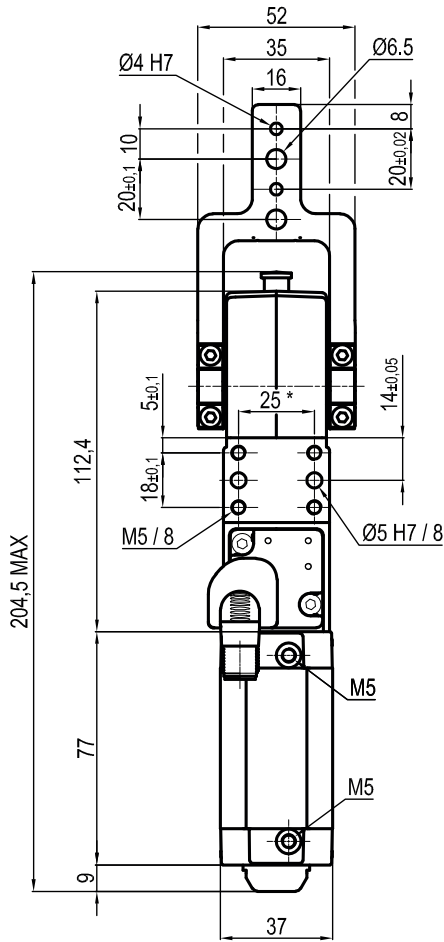
Supply voltage: 10 ÷ 30 Vdc

 IP code: **IP 65**

Subject to technical modifications without notice

UCBP25OC_K0

10 mm



Bore Ø	Holding moment	Clamping moment (0,5 MPa)	Weight (clamping arm not included)
25 mm	75 Nm	25 Nm	0,8 Kg

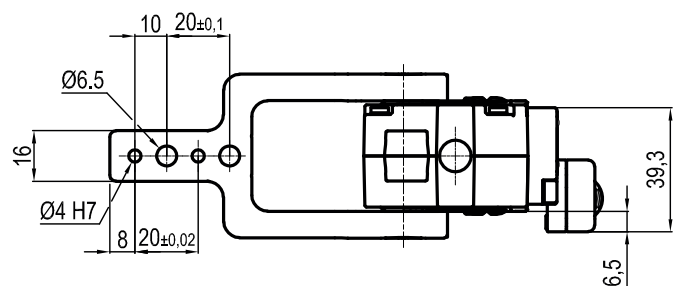
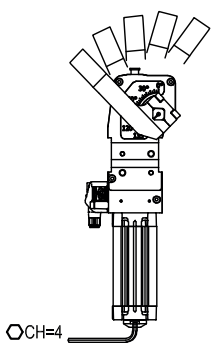
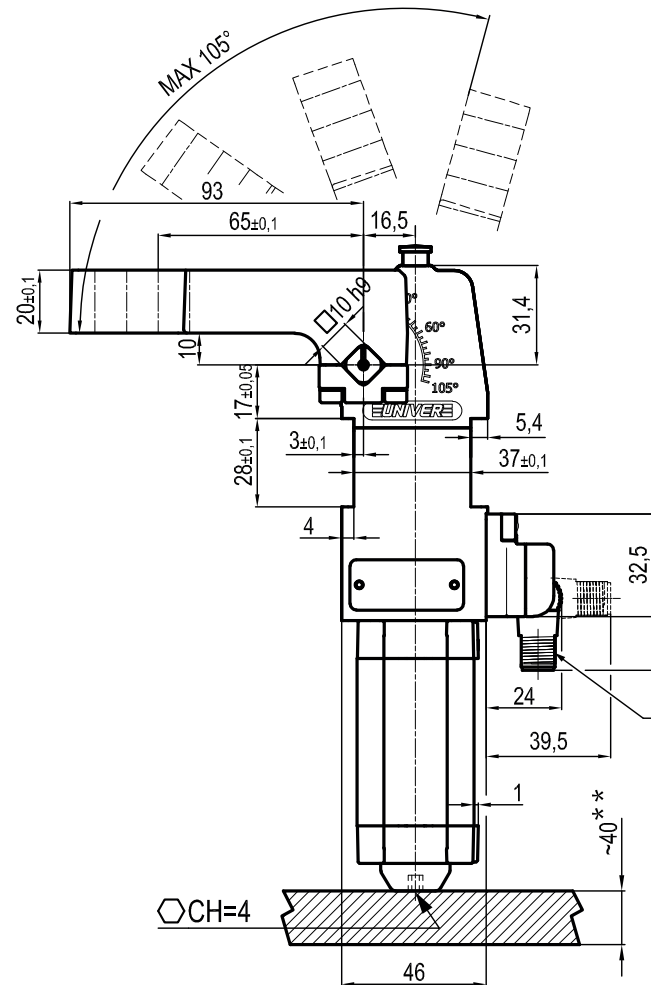
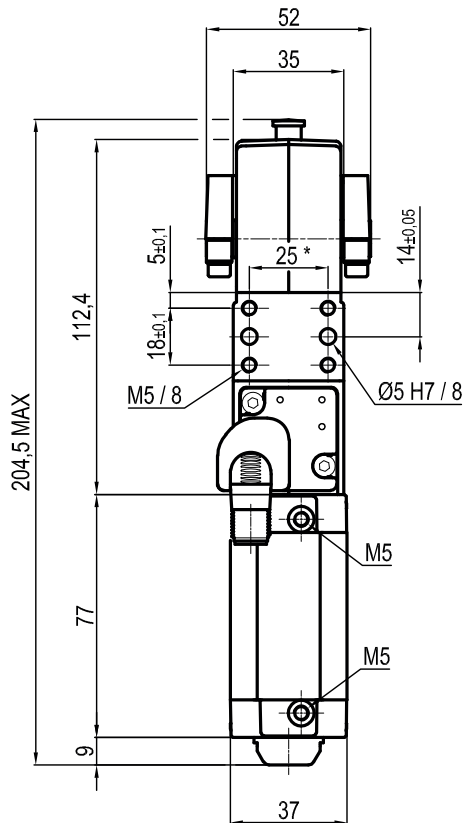
*: TOLERANCE BETWEEN DOWELS ± 0,02, BETWEEN SCREW HOLES ± 0,1
 **: AREA TO ACCESS ANGLE ADJUSTMENT

Min./Max. operating pressure: **0,4 / 0,6 MPa**
 Operating temperature: **5° ÷ 45° C**
 Opening angle: **adjustable from 0° to 105°**
 Arm position: **180°**
 Electronic sensor with M12 swivel connector, from 0° to 90°, in steps of 10°
 Supply voltage: 10 ÷ 30 Vdc
 IP code: **IP 65**

Subject to technical modifications without notice

UCBP25VC_K0

10 mm



Bore Ø	Holding moment	Clamping moment (0,5 MPa)	Weight (clamping arm not included)
25 mm	75 Nm	25 Nm	0,8 Kg

 Min./Max. operating pressure: **0,4 / 0,6 MPa**

 Operating temperature: **5° ÷ 45° C**

 Opening angle: **adjustable from 0° to 105°**

 Arm position: **90°**

Electronic sensor with M12 swivel connector, from 0° to 90°, in steps of 10°

Supply voltage: 10 ÷ 30 Vdc

 IP code: **IP 65**

*: TOLERANCE BETWEEN DOWELS ± 0,02, BETWEEN SCREW HOLES ± 0,1

**: AREA TO ACCESS ANGLE ADJUSTMENT

Subject to technical modifications without notice