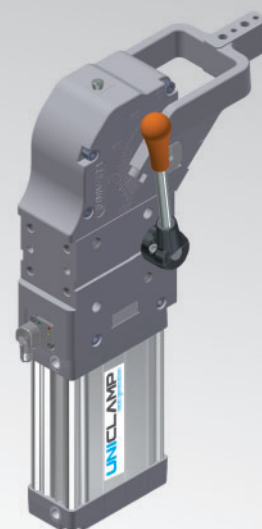
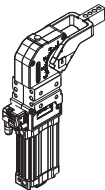

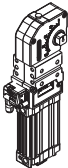


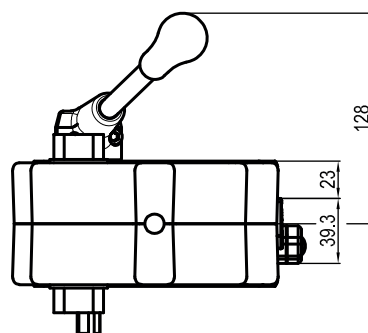
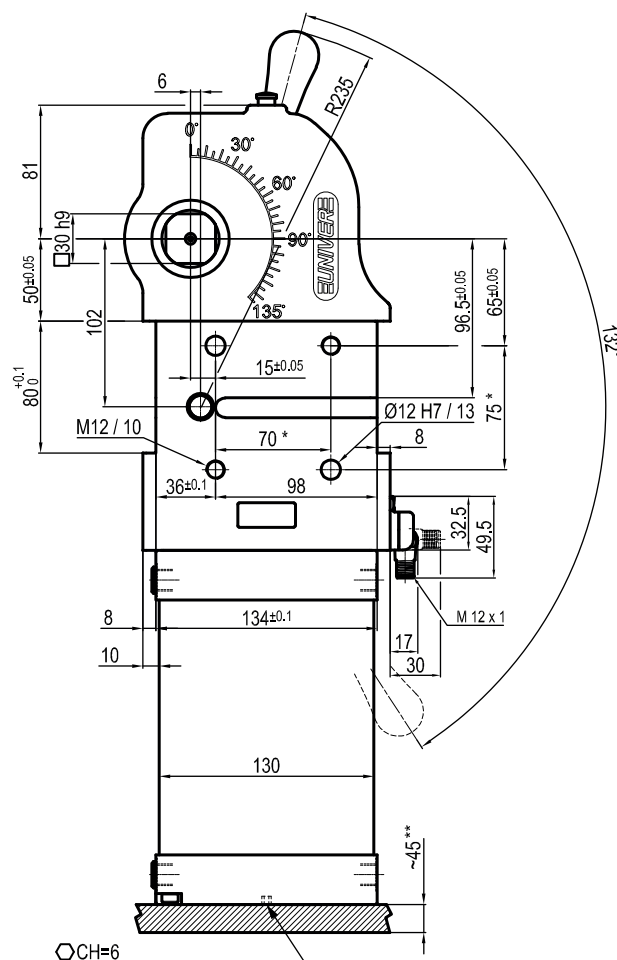
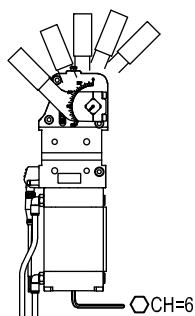
# UCBM80

UNICLAMP Power clamp with hand lever



U	C	B	M	8	0	O	E	A	K	0
1	2	3	4	5	6	7	8	9		

1 Series	2 Standard	3 Modell	4 Size
<b>UC</b> = UNICLAMP Power clamp fully adjustable opening angle: 0° to 135° Max The opening angle range may vary according to the arm position and style	<b>B</b> = European standard	<b>M</b> = Pneumatic with hand lever	<b>80</b> = Ø 80 mm
5 Arm position	6 Arm style		
<b>V</b> = 90° 	<b>O</b> = 180° 	<b>N</b> = No arm 	<b>C</b> = Central, 20 mm Offset <b>D</b> = Right, 20 mm Offset <b>S</b> = Left, 20 mm Offset <b>E</b> = Central, 45 mm Offset <b>F</b> = Right, 45 mm Offset <b>L</b> = Left, 45 mm Offset <b>P</b> = Doubles, 20 mm Offset <b>X*</b> = Central, oversized dowel holes Ø 8 H7, 20 mm offset <b>Y*</b> = Right, oversized dowel holes Ø 8 H7, 20 mm offset <b>Z*</b> = Left, oversized dowel holes Ø 8 H7, 20 mm offset <b>T*</b> = Central, oversized dowel holes Ø 8 H7, 45 mm offset <b>U*</b> = Right, oversized dowel holes Ø 8 H7, 45 mm offset <b>V*</b> = Left, oversized dowel holes Ø 8 H7, 45 mm offset <b>N</b> = No arm * = Available upon request
7 Arm type	8 Sensor	9 Product revision	
<b>A</b> = Aluminum <b>S</b> = Steel <b>N</b> = No arm	<b>N</b> = No sensor (with protection plate) <b>K</b> = Electronic sensor PNP (optical) (DF-K) <b>D</b> = Pneumatic sensor <b>J</b> = Electronic sensor NPN (optical) (DF-J) <b>Y</b> = Electronic sensor PNP (optical) (DF-Y) white led	Assigned by UNIVER	

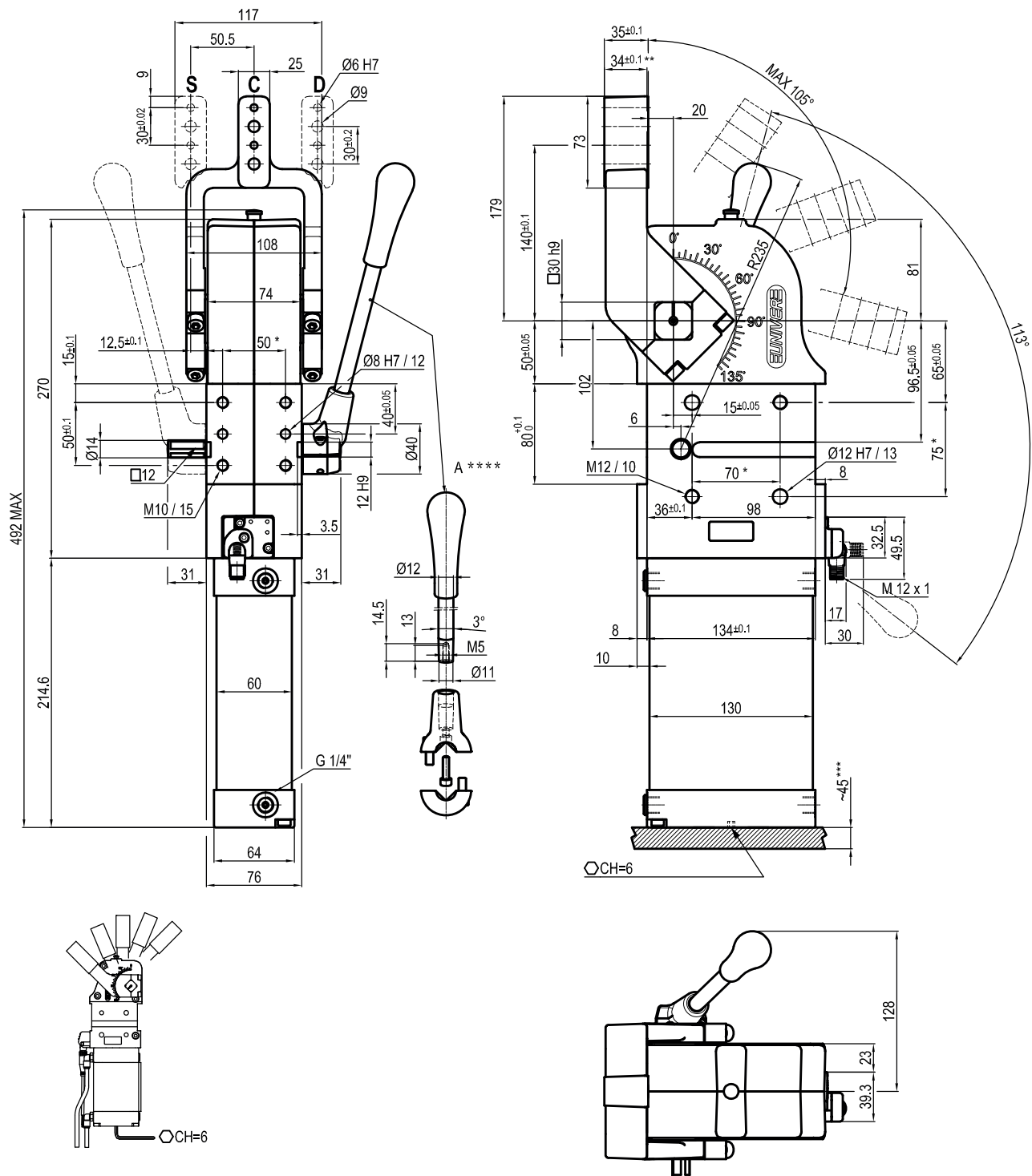
[illegible]

\*: TOLERANCE BETWEEN DOWELS  $\pm 0,02$ , BETWEEN SCREW HOLES  $\pm 0,1$   
 \*\*: AREA TO ACCESS ANGLE ADJUSTMENT  
 \*\*\*: DIMENSIONS TO BE RESPECTED IN CASE OTHER MANUAL LEVERS ARE USED

Min./Max. operating pressure: **0,4 / 0,6 MPa**  
 Operating temperature: **5° ÷ 45° C**  
 Opening angle: **adjustable**  
 Without arm  
 With hand lever  
 Electronic sensor with M12 swivel connector, from 0° to 90°,  
 in steps of 10°  
 Supply voltage: 10 ÷ 30 Vdc  
 IP code: **IP 65**  
 Pneumatic ports on both sides

## UCBM80O\_\_K0

20 mm



Bore Ø	Holding moment	Clamping moment (0,5 MPa)	Weight (clamping arm not included)
80 mm	4000 Nm	1100 Nm	9,5 Kg

\*: TOLERANCE BETWEEN DOWELS ± 0,02, BETWEEN SCREW HOLES ± 0,1

\*\*: TOLERANCE AT 80 mm FROM PIVOT POINT

\*\*\*: AREA TO ACCESS ANGLE ADJUSTMENT

\*\*\*\*: DIMENSIONS TO BE RESPECTED IN CASE OTHER MANUAL LEVERS ARE USED

Subject to technical modifications without notice

Rev. 04 26.01.22

Min./Max. operating pressure: **0,4 / 0,6 MPa**

Operating temperature: **5° ÷ 45° C**

Opening angle: **adjustable from 0° to 105°**

Arm position: **180°**

With hand lever

Electronic sensor with M12 swivel connector, from 0° to 90°,

in steps of 10°

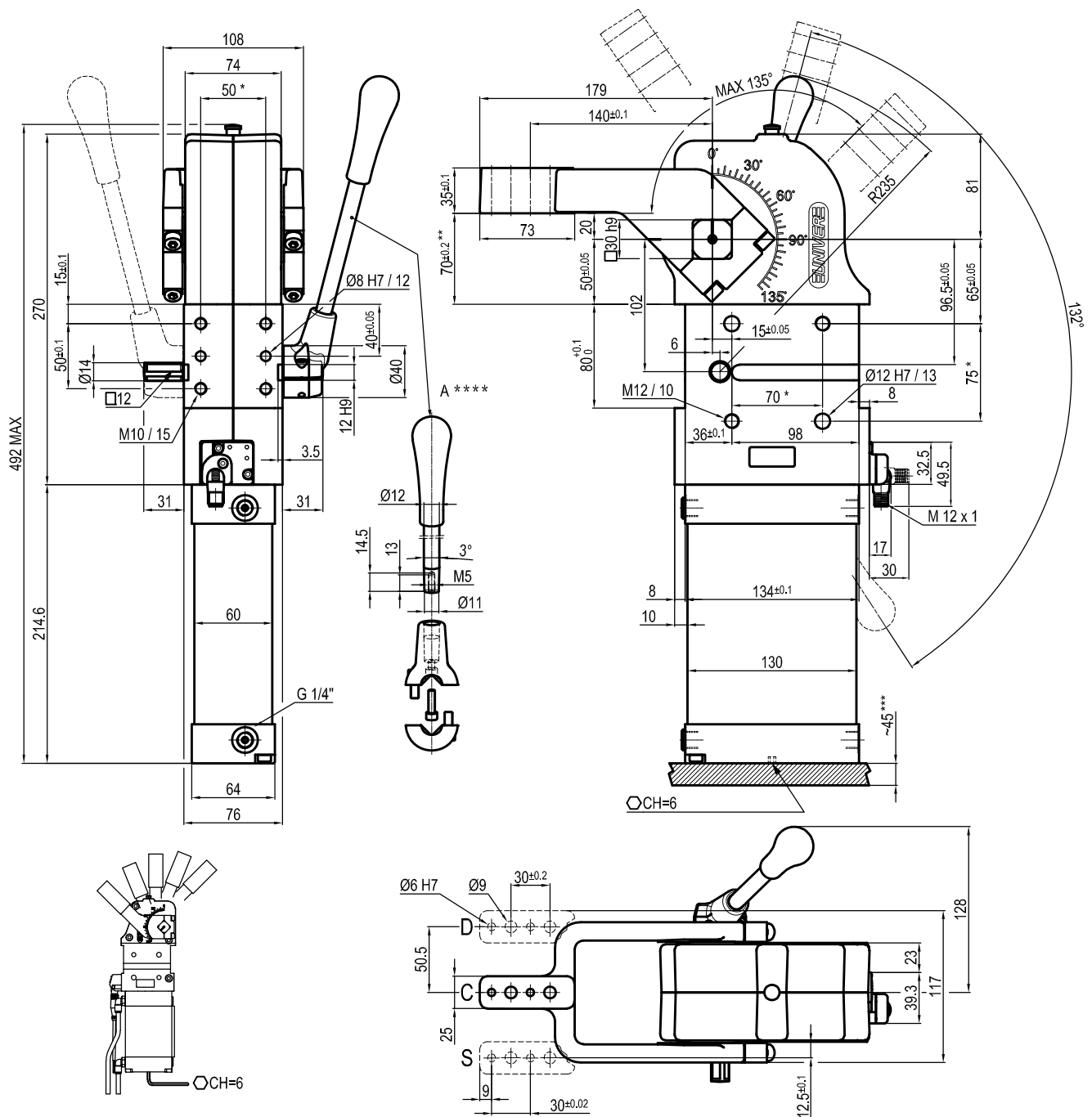
Supply voltage: 10 ÷ 30 Vdc

IP code: **IP 65**

Pneumatic ports on both sides

UCBM80V\_\_K0

20 mm



Bore Ø	Holding moment	Clamping moment (0,5 MPa)	Weight (clamping arm not included)
80 mm	4000 Nm	1100 Nm	9,5 Kg

\*: TOLERANCE BETWEEN DOWELS ± 0,02, BETWEEN SCREW HOLES ± 0,1

\*\*: TOLERANCE AT 80 mm FROM PIVOT POINT

\*\*\*: AREA TO ACCESS ANGLE ADJUSTMENT

\*\*\*\*: DIMENSIONS TO BE RESPECTED IN CASE OTHER MANUAL LEVERS ARE USED

Subject to technical modifications without notice

Rev. 03 26.01.22

Min./Max. operating pressure: **0,4 / 0,6 MPa**

Operating temperature: **5° ÷ 45° C**

Opening angle: **adjustable from 0° to 135°**

Arm position: **90°**

With hand lever

Electronic sensor with M12 swivel connector, from 0° to 90°,

in steps of 10°

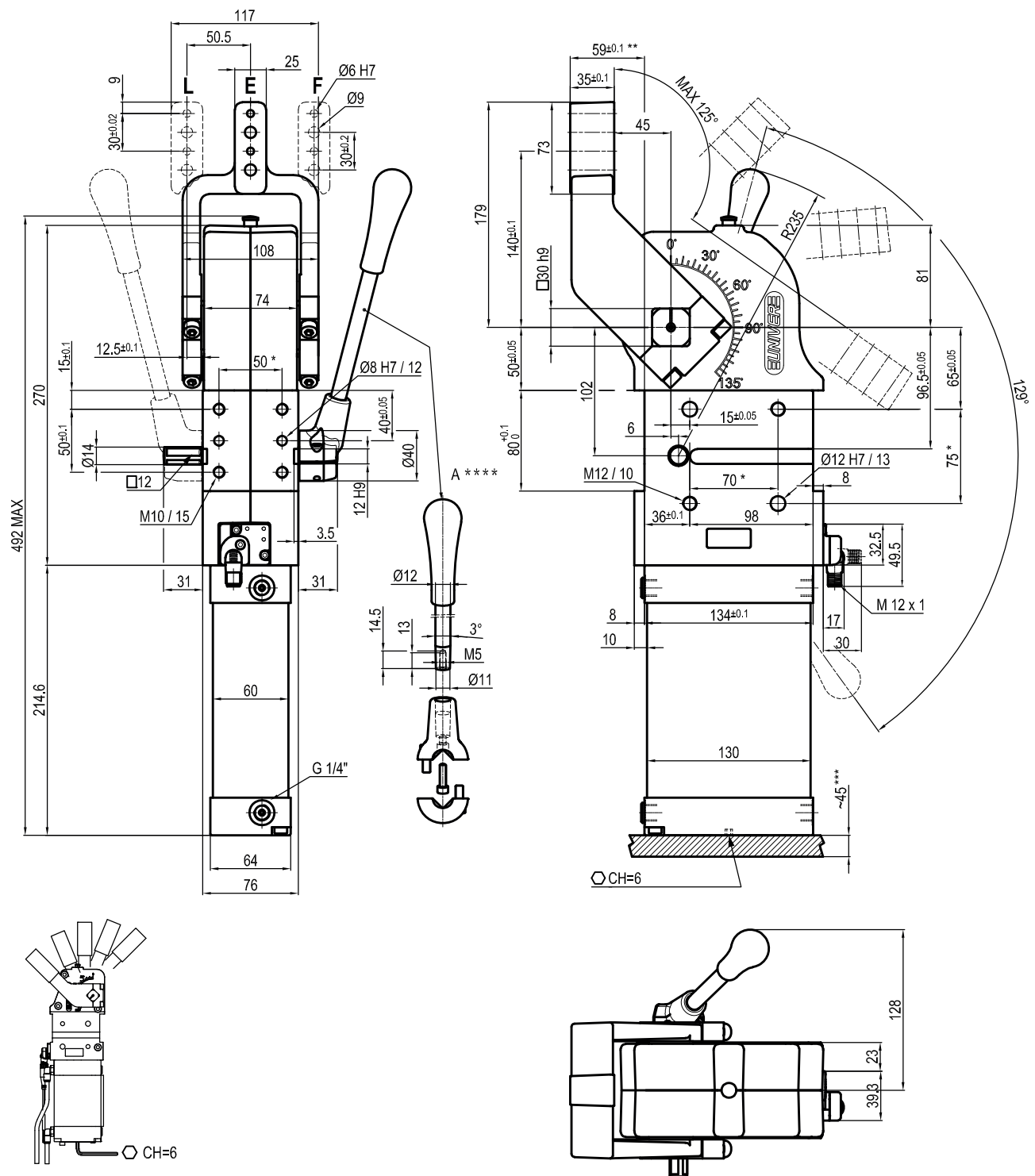
Supply voltage: 10 ÷ 30 Vdc

IP code: **IP 65**

Pneumatic ports on both sides

UCBM800\_\_K0

45 mm



Bore Ø	Holding moment	Clamping moment (0,5 MPa)	Weight (clamping arm not included)
80 mm	4000 Nm	1100 Nm	9,5 Kg

\*: TOLERANCE BETWEEN DOWELS ± 0,02, BETWEEN SCREW HOLES ± 0,1

\*\*: TOLERANCE AT 80 mm FROM PIVOT POINT

\*\*\*: AREA TO ACCESS ANGLE ADJUSTMENT

\*\*\*\*: DIMENSIONS TO BE RESPECTED IN CASE OTHER MANUAL LEVERS ARE USED

Subject to technical modifications without notice

Rev. 02 26.01.22

Min./Max. operating pressure: **0,4 / 0,6 MPa**

Operating temperature: **5° ÷ 45° C**

Opening angle: **adjustable from 0° to 125°**

Arm position: **180°**

With hand lever

Electronic sensor with M12 swivel connector, from 0° to 90°,

in steps of 10°

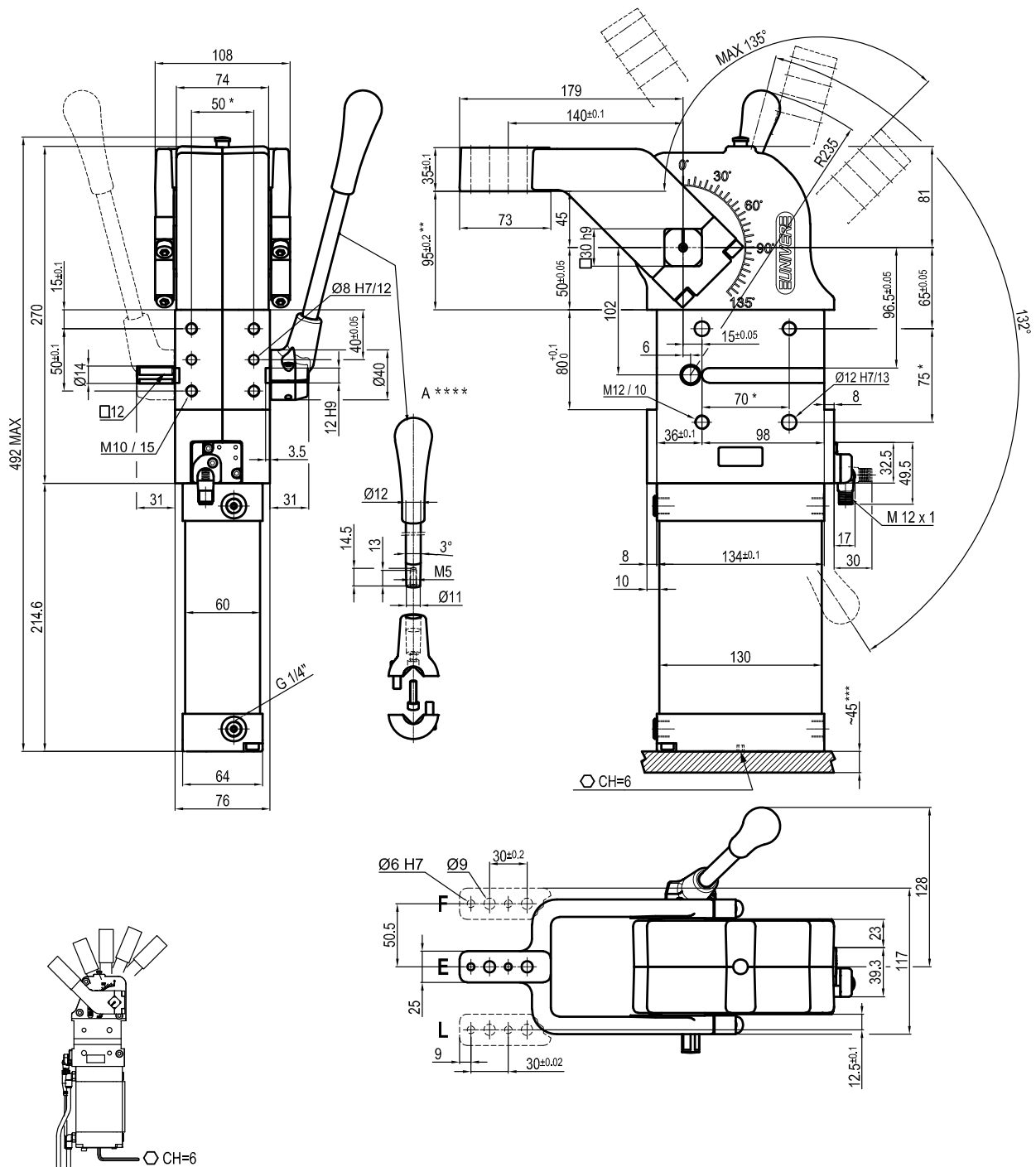
Supply voltage: 10 ÷ 30 Vdc

IP code: **IP 65**

Pneumatic ports on both sides

UCBM80V\_\_K0

45 mm



Bore Ø	Holding moment	Clamping moment (0,5 MPa)	Weight (clamping arm not included)
80 mm	4000 Nm	1100 Nm	9,5 Kg

\*: TOLERANCE BETWEEN DOWELS  $\pm 0,02$ , BETWEEN SCREW HOLES  $\pm 0,1$ 

\*\*: TOLERANCE AT 80 mm FROM PIVOT POINT

\*\*\*: AREA TO ACCESS ANGLE ADJUSTMENT

\*\*\*\*: DIMENSIONS TO BE RESPECTED IN CASE OTHER MANUAL LEVERS ARE USED

Subject to technical modifications without notice

Rev. 02 26.01.22

Min./Max. operating pressure: **0,4 / 0,6 MPa**

Operating temperature: **5° ÷ 45° C**

Opening angle: **adjustable from 0° to 135°**

Arm position: **90°**

With hand lever

Electronic sensor with M12 swivel connector, from 0° to 90°,

in steps of 10°

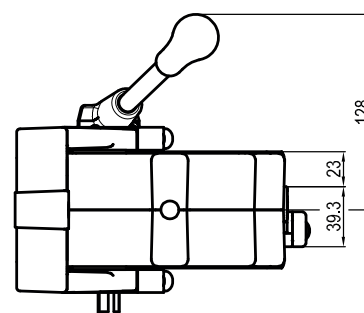
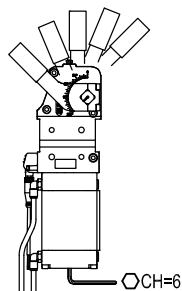
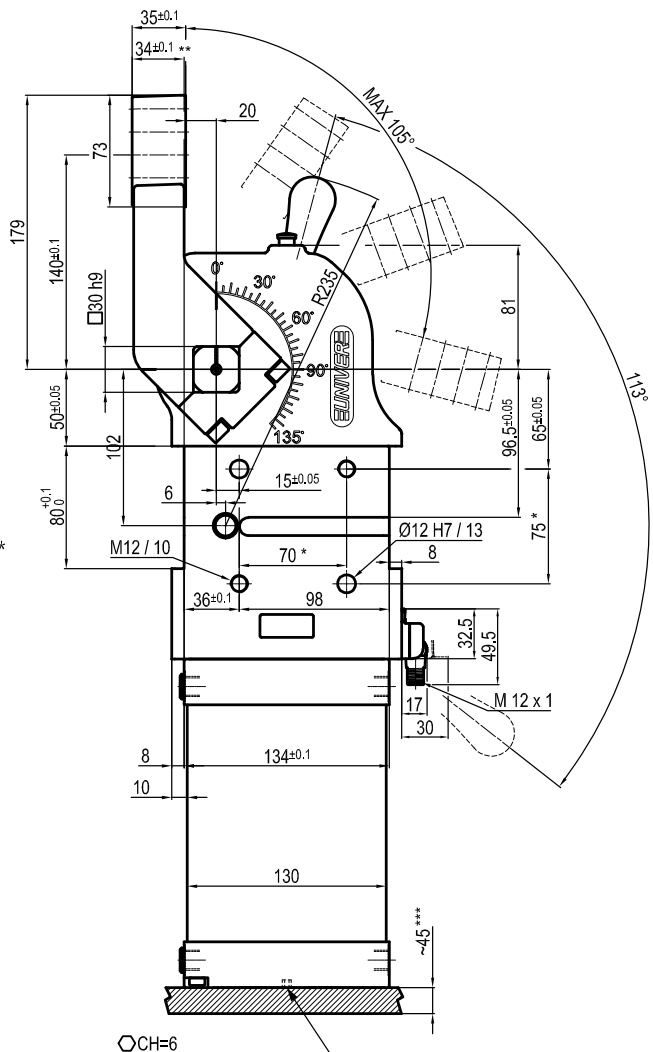
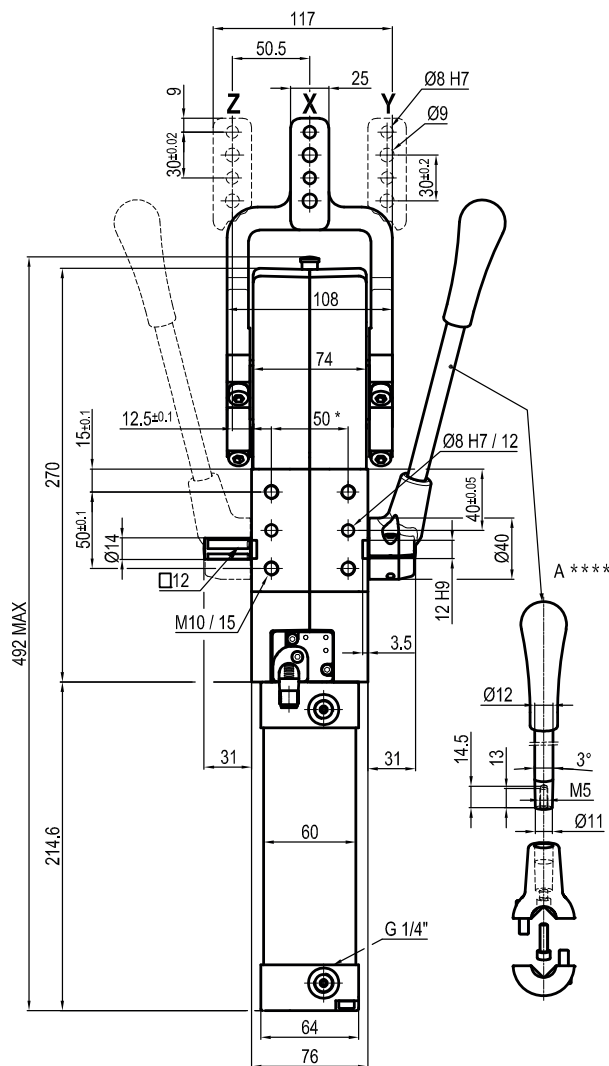
Supply voltage: 10 ÷ 30 Vdc

IP code: **IP 65**

Pneumatic ports on both sides

## UCBM800 \_\_K0

## oversized dowel holes - 20 mm



Bore Ø	Holding moment	Clamping moment (0,5 MPa)	Weight (clamping arm not included)
80 mm	4000 Nm	1100 Nm	9,5 Kg

\* : TOLERANCE BETWEEN DOWELS ± 0,02, BETWEEN SCREW HOLES ± 0,1

\*\* : TOLERANCE AT 80 mm FROM PIVOT POINT

\*\*\* : AREA TO ACCESS ANGLE ADJUSTMENT

\*\*\*\* : DIMENSIONS TO BE RESPECTED IN CASE OTHER MANUAL LEVERS ARE USED

Subject to technical modifications without notice

Rev. 03 26.01.22

Min./Max. operating pressure: **0,4 / 0,6 MPa**

Operating temperature: **5° ÷ 45° C**

Opening angle: **adjustable from 0° to 105°**

Arm position: **180°**

With manual lever

Electronic sensor with M12 swivel connector, from 0° to 90°

in steps of 10°

Supply voltage: 10 ÷ 30 Vdc

IP code: **IP 65**

Pneumatic ports on both sides

oversized dowel holes - **20 mm**

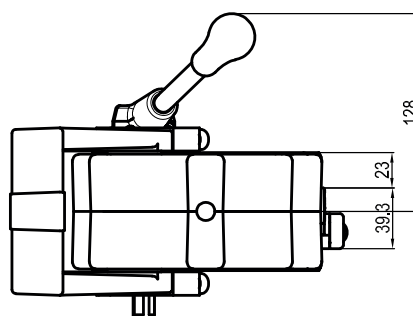
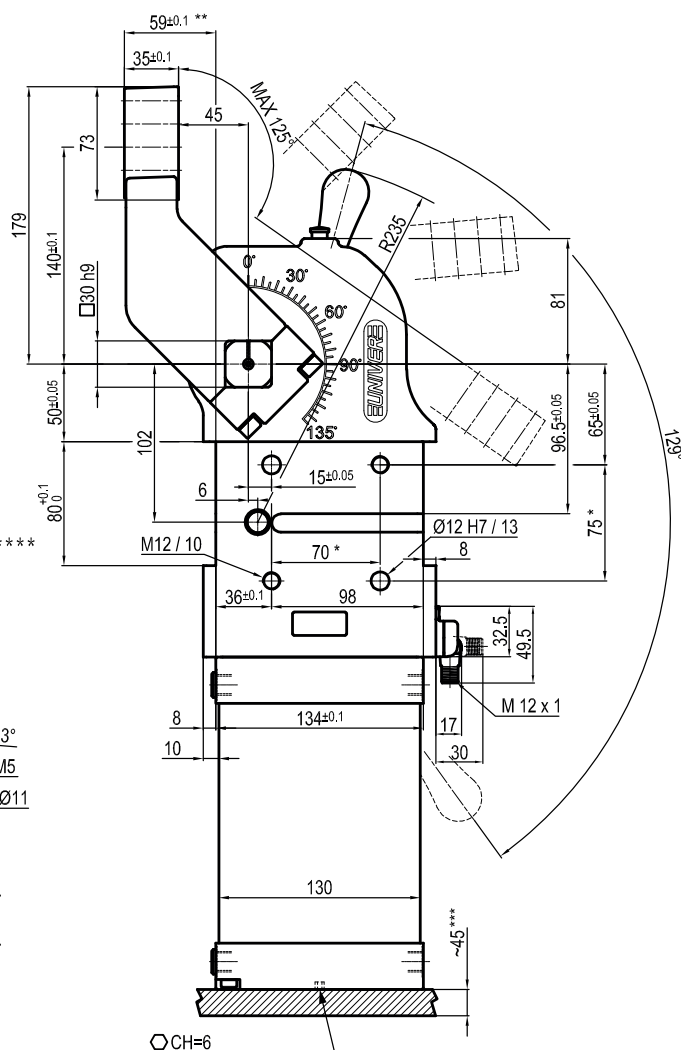


Subject to technical modifications without notice

Min./Max. operating pressure: **0,4 / 0,6 MPa**  
 Operating temperature: **5° ÷ 45° C**  
 Opening angle: **adjustable from 0° to 135°**  
 Arm position: **90°**  
 With manual lever  
 Electronic sensor with M12 swivel connector, from 0° to 90°,  
 in steps of 10°  
 Supply voltage: 10 ÷ 30 Vdc  
 IP code: **IP 65**  
 Pneumatic ports on both sides



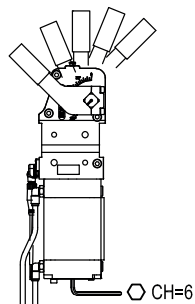
oversized dowel holes - **45 mm**



Min./Max. operating pressure: **0,4 / 0,6 MPa**  
 Operating temperature: **5° ÷ 45° C**  
 Opening angle: **adjustable from 0° to 105°**  
 Arm position: **180°**  
 With manual lever  
 Electronic sensor with M12 swivel connector, from 0° to 90°,  
 in steps of 10°  
 Supply voltage: 10 ÷ 30 Vdc  
 IP code: **IP 65**  
 Pneumatic ports on both sides

Rev. 01 26.01.22

oversized dowel holes - **45 mm**



Min./Max. operating pressure: **0,4 / 0,6 MPa**  
 Operating temperature: **5° ÷ 45° C**  
 Opening angle: **adjustable from 0° to 135°**  
 Arm position: **90°**  
 With manual lever  
 Electronic sensor with M12 swivel connector, from 0° to 90°,  
 in steps of 10°  
 Supply voltage: 10 ÷ 30 Vdc  
 IP code: **IP 65**  
 Pneumatic ports on both sides

Rev. 01 26.01.22