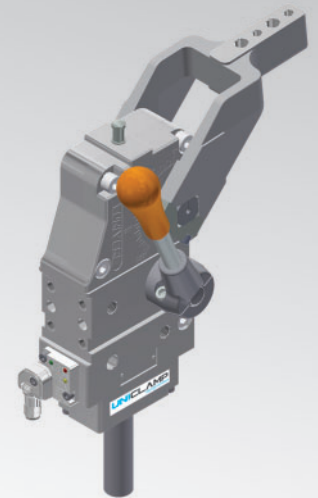


UCBL450

UNICLAMP Manual power clamps



U	C	B	L	4	5	0	V	E	A	K	0
1	2	3	4	5	6	7	8	9	10		

1 Series	2 Standard	3 Version	4 Fixing
----------	------------	-----------	----------

UC = UNICLAMP Manual power clamp fully adjustable opening angle: 0° to 135° Max
The opening angle range may vary according to the arm position and style

B = European standard

L = Manual power clamp with hand lever

4 = On 4 sides

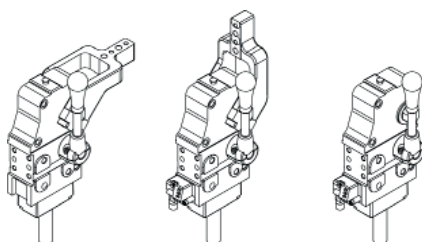
5 Size	6 Arm position	7 Arm style
--------	----------------	-------------

50 = Ø 50

V = 90°

O = 180°

N = No arm



C = Central, 15 mm Offset

D = Right, 15 mm Offset

S = Left, 15 mm Offset

E = Central, 45mm Offset

F = Right, 45mm Offset

L = Left, 45mm Offset

X* = Central, oversized dowel holes Ø 8 H7, 15 mm offset

Y* = Right, oversized dowel holes Ø 8 H7, 15 mm offset

Z* = Left, oversized dowel holes Ø 8 H7, 15 mm offset

T* = Central, oversized dowel holes Ø 8 H7, 45 mm offset (only for UCBL450)

U* = Right, oversized dowel holes Ø 8 H7, 45 mm offset (only for UCBL450)

V* = Left, oversized dowel holes Ø 8 H7, 45 mm offset (only for UCBL450)

N = No arm

* = Available upon request

8 Arm type	9 Sensor	10 Product revision
------------	----------	---------------------

A = Aluminum

S = Steel

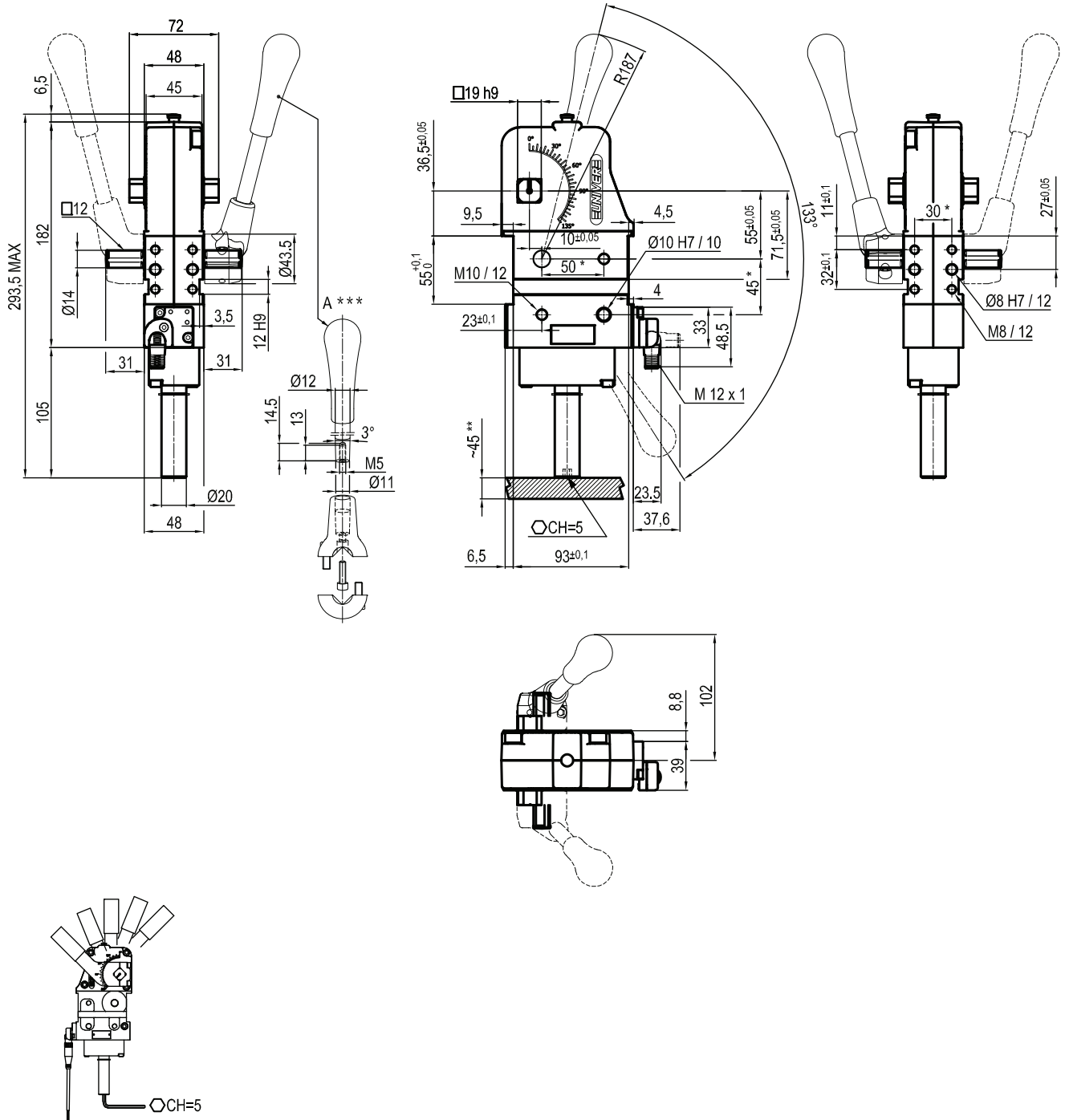
N = No arm

N = No sensor

(with protection plate)

K = Electronic sensor PNP (optical) (DF-K)

Assigned by UNIVER

UCBL450NNNK0


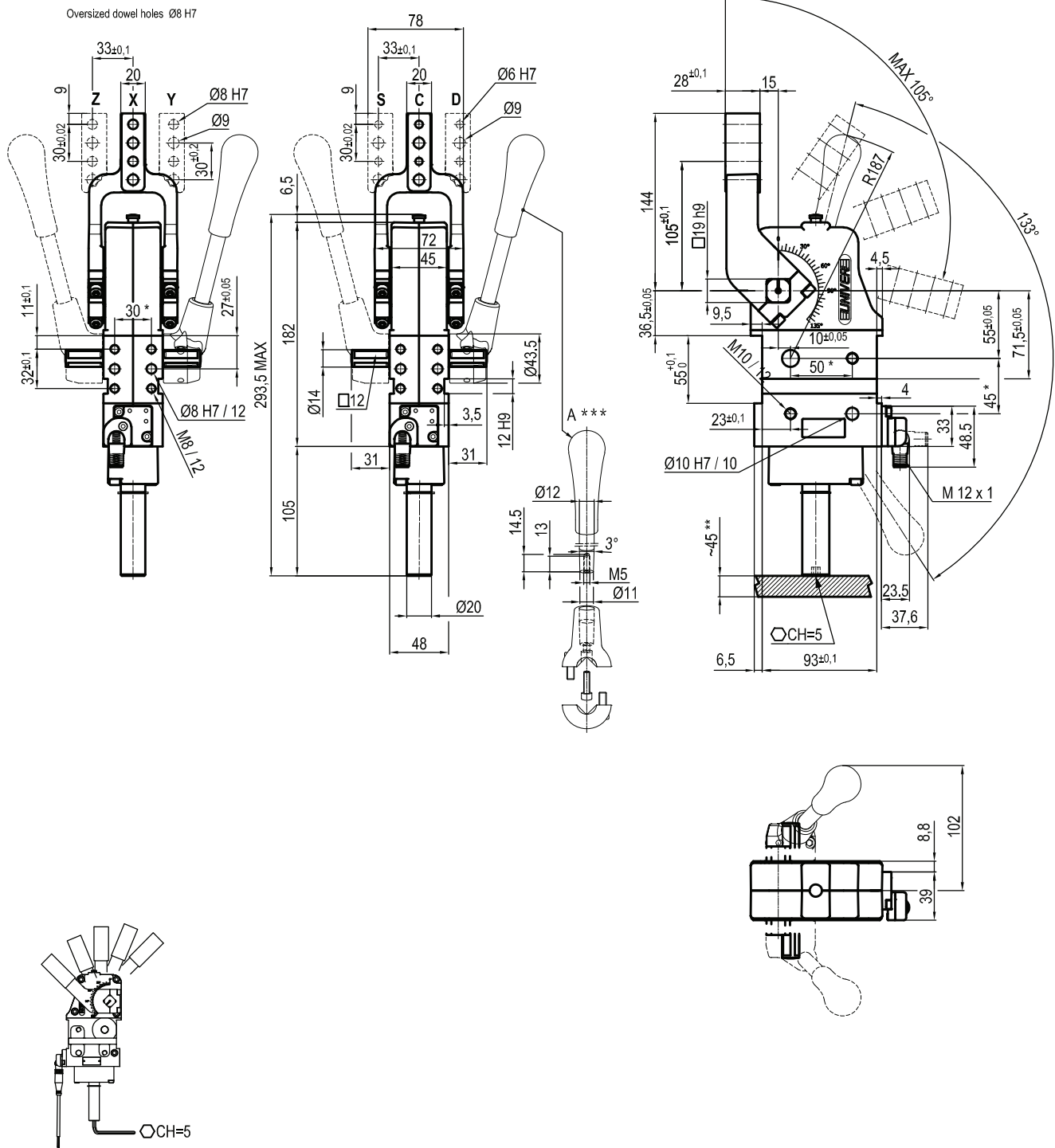
Size	Holding moment	Clamping moment	Weight (clamping arm not included)
50	1750 Nm	420 Nm	2,8 Kg

Operating temperature: **5°÷ 45° C**
 Opening angle: **adjustable**
 Without arm
 With manual lever
 Electronic sensor with M12 swivel connector, from 0° to 90°, in steps of 10°
 Supply voltage: 10 ÷ 30 Vdc
 IP code: **IP 65**

*: TOLERANCE BETWEEN DOWELS ± 0,02, BETWEEN SCREW HOLES ± 0,1
 **: AREA TO ACCESS ANGLE ADJUSTMENT
 ***: DIMENSIONS TO BE RESPECTED IN CASE OTHER MANUAL LEVERS ARE USED

UCBL4500__K0

15 mm



Size	Holding moment	Clamping moment	Weight (clamping arm not included)
50	1750 Nm	420 Nm	2,8 Kg

 *: TOLERANCE BETWEEN DOWELS $\pm 0,02$, BETWEEN SCREW HOLES $\pm 0,1$

**: AREA TO ACCESS ANGLE ADJUSTMENT

***: DIMENSIONS TO BE RESPECTED IN CASE OTHER MANUAL LEVERS ARE USED

 Operating temperature: $5^{\circ} \div 45^{\circ} \text{C}$

 Opening angle: **adjustable from 0° to 105°**

 Arm position: **180°**

With manual lever

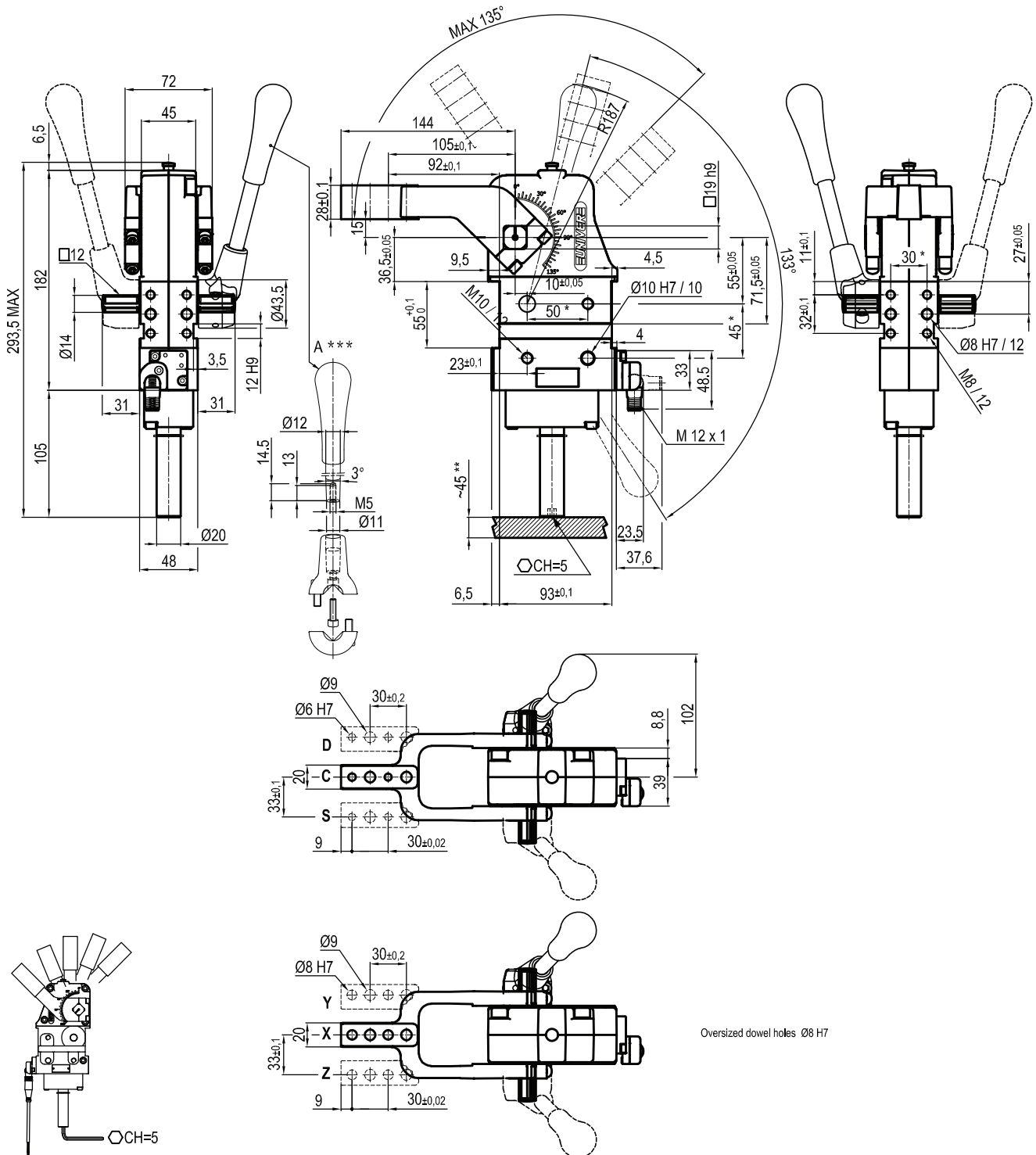
 Electronic sensor with M12 swivel connector, from 0° to 90° , in steps of 10°

 Supply voltage: $10 \div 30 \text{Vdc}$

 IP code: **IP 65**

UCBL450V__K0

15 mm



Size	Holding moment	Clamping moment	Weight (clamping arm not included)
50	1750 Nm	420 Nm	2,8 Kg

* : TOLERANCE BETWEEN DOWELS $\pm 0,02$, BETWEEN SCREW HOLES $\pm 0,1$
 ** : AREA TO ACCESS ANGLE ADJUSTMENT
 *** : DIMENSIONS TO BE RESPECTED IN CASE OTHER MANUAL LEVERS ARE USED

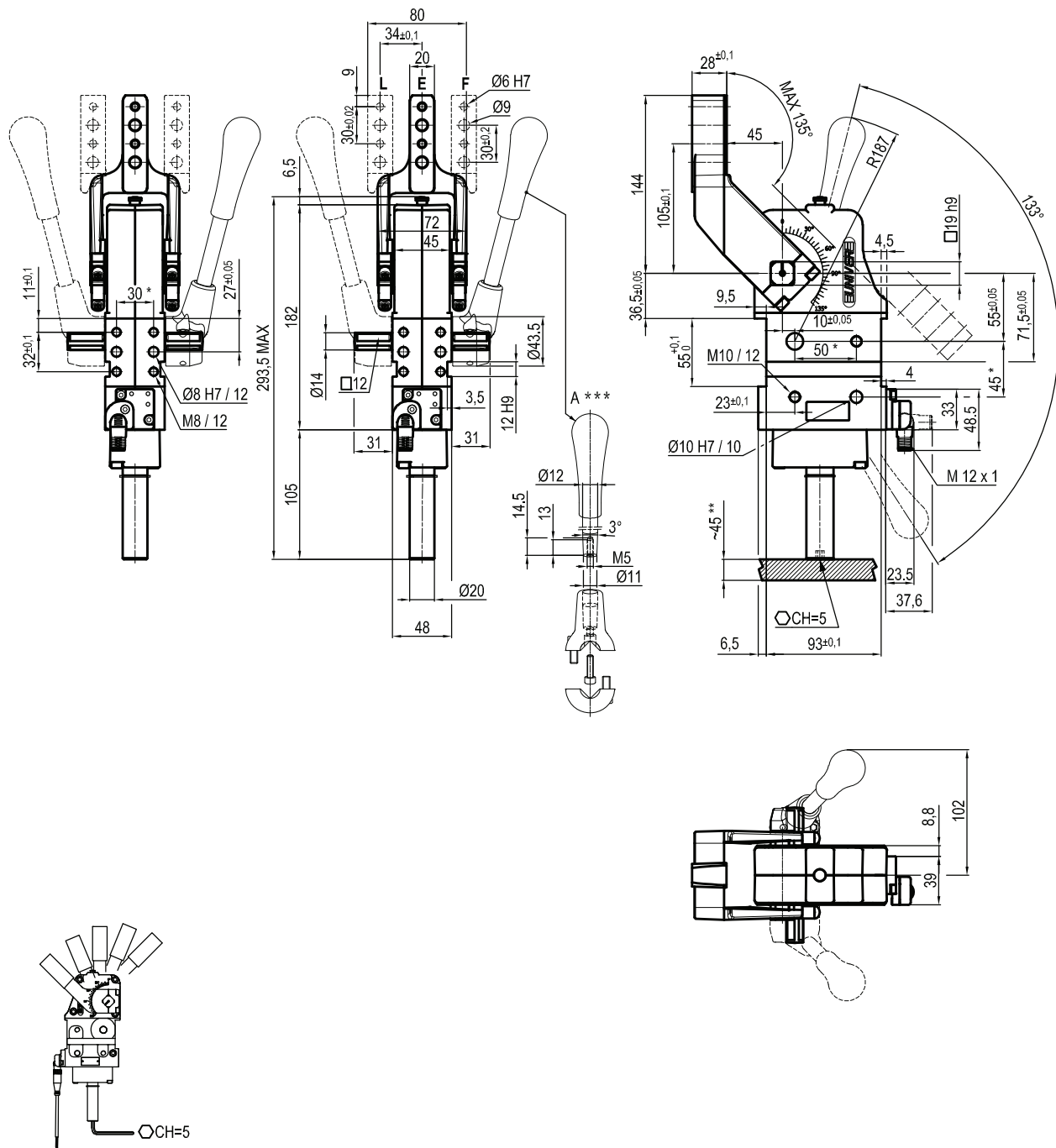
Operating temperature: $5^{\circ} \pm 45^{\circ} \text{C}$
 Opening angle: **adjustable from 0° to 135°**
 Arm position: **90°**
 With manual lever
 Electronic sensor with M12 swivel connector, from 0° to 90° , in steps of 10°
 Supply voltage: $10 \div 30 \text{ Vdc}$
 IP code: **IP 65**

Subject to technical modifications without notice

Rev. 00 05.11.19

UCBL4500__K0

45 mm



Size	Holding moment	Clamping moment	Weight (clamping arm not included)
50	1750 Nm	420 Nm	2,8 Kg

* : TOLERANCE BETWEEN DOWELS $\pm 0,02$, BETWEEN SCREW HOLES $\pm 0,1$

** : AREA TO ACCESS ANGLE ADJUSTMENT

***: DIMENSIONS TO BE RESPECTED IN CASE OTHER MANUAL LEVERS ARE USED

Operating temperature: $5^{\circ} \div 45^{\circ} \text{C}$

Opening angle: **adjustable from 0° to 135°**

Arm position: **180°**

With manual lever

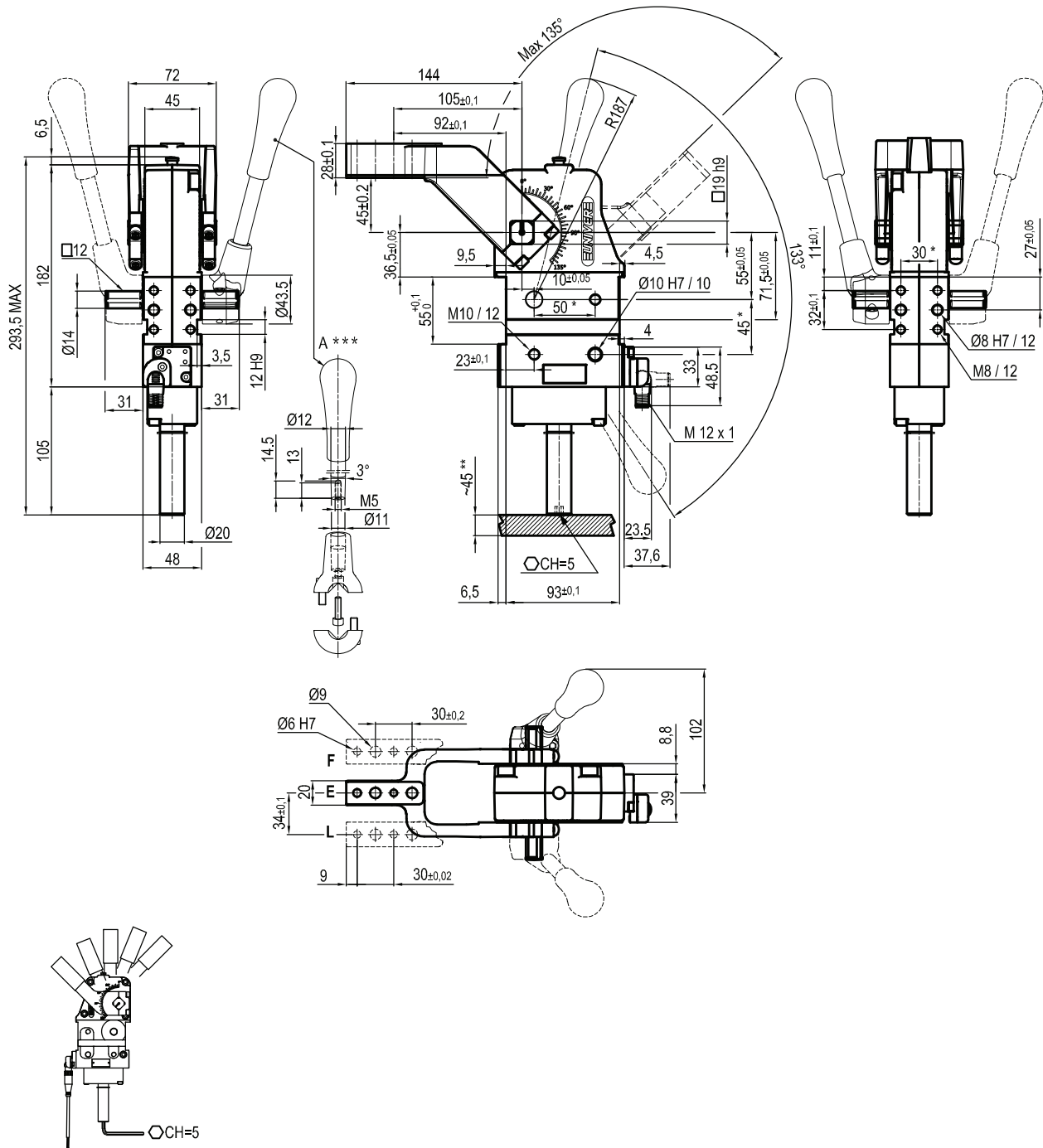
Electronic sensor with M12 swivel connector, from 0° to 90° , in steps of 10°

Supply voltage: $10 \div 30 \text{ Vdc}$

IP code: **IP 65**

UCBL450V__K0

45 mm



Size	Holding moment	Clamping moment	Weight (clamping arm not included)
50	1750 Nm	420 Nm	2,8 Kg

Min./Max. operating pressure: **0,4 / 0,6 MPa**
 Operating temperature: **5° ± 45° C**
 Opening angle: **adjustable from 0° to 135°**
 Arm position: **90°**
 Electronic sensor with M12 swivel connector, from 0° to 90°, in steps of 10°
 Supply voltage: 10 ÷ 30 Vdc
 IP code: **IP 65**

*: TOLERANCE BETWEEN DOWELS ± 0,02, BETWEEN SCREW HOLES ± 0,1
 **: AREA TO ACCESS ANGLE ADJUSTMENT
 ***: DIMENSIONS TO BE RESPECTED IN CASE OTHER MANUAL LEVERS ARE USED

Subject to technical modifications without notice

Rev. 00 19.09.19