

UAGP

Unità rotante pneumatica UNICLAMP



U	A	G	P	0	8	0	O	A	0	9	0	B	S	0
1	2	3	4	5	6	7	8	9						

1 Serie	2 Versione	3 Taglia
---------	------------	----------

UAG = Unità rotante con angoli di rotazione determinati UNICLAMP

P = Pneumatica

075 = 75Nm Ø80 mm	215 = 210Nm Ø125 mm
080 = 60Nm Ø80 mm	300 = 300Nm Ø160 mm
120 = 110Nm Ø100 mm	350 = 350Nm Ø160 mm
150 = 120Nm Ø100 mm	355 = 350Nm Ø160 mm
155 = 120Nm Ø100 mm	600 = 600Nm Ø200 mm
170 = 170Nm Ø125 mm	605 = 600Nm Ø200 mm
210 = 210Nm Ø125 mm	

4 Posizione tavola	5 Sensore	6 Angoli di rotazione
--------------------	-----------	-----------------------

V = Verticale 180°
O = Orizzontale 90°
Z = Verticale, speculare alla posizione V
P = Orizzontale, speculare alla posizione O (massima apertura angolare 60°)

K = Sensore elettronico PNP (ottico) (DF-K)
A = Sensore elettronico PNP (ottico) per angolo di apertura (DF-K) + sensore freno DF-U)

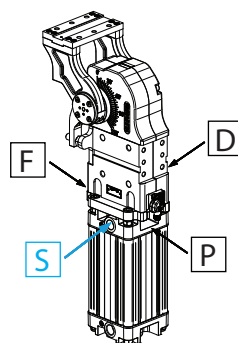
120 = 120°
090 = 90°
060 = 60°
045 = 45°

7 Blocco di stazionamento	8 Connessioni	9 Revisione prodotto
---------------------------	---------------	----------------------

B = Con blocco di stazionamento
W = Senza blocco di stazionamento
M = Funzione di sblocco manuale su freno di stazionamento

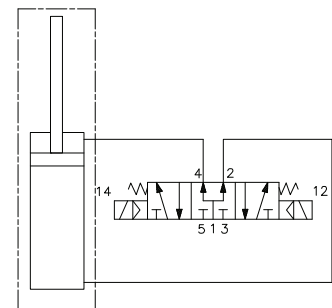
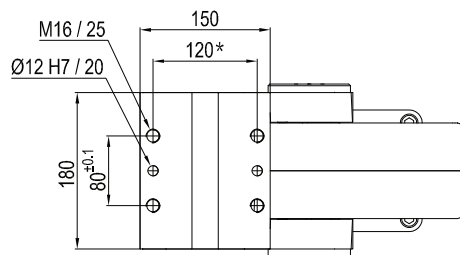
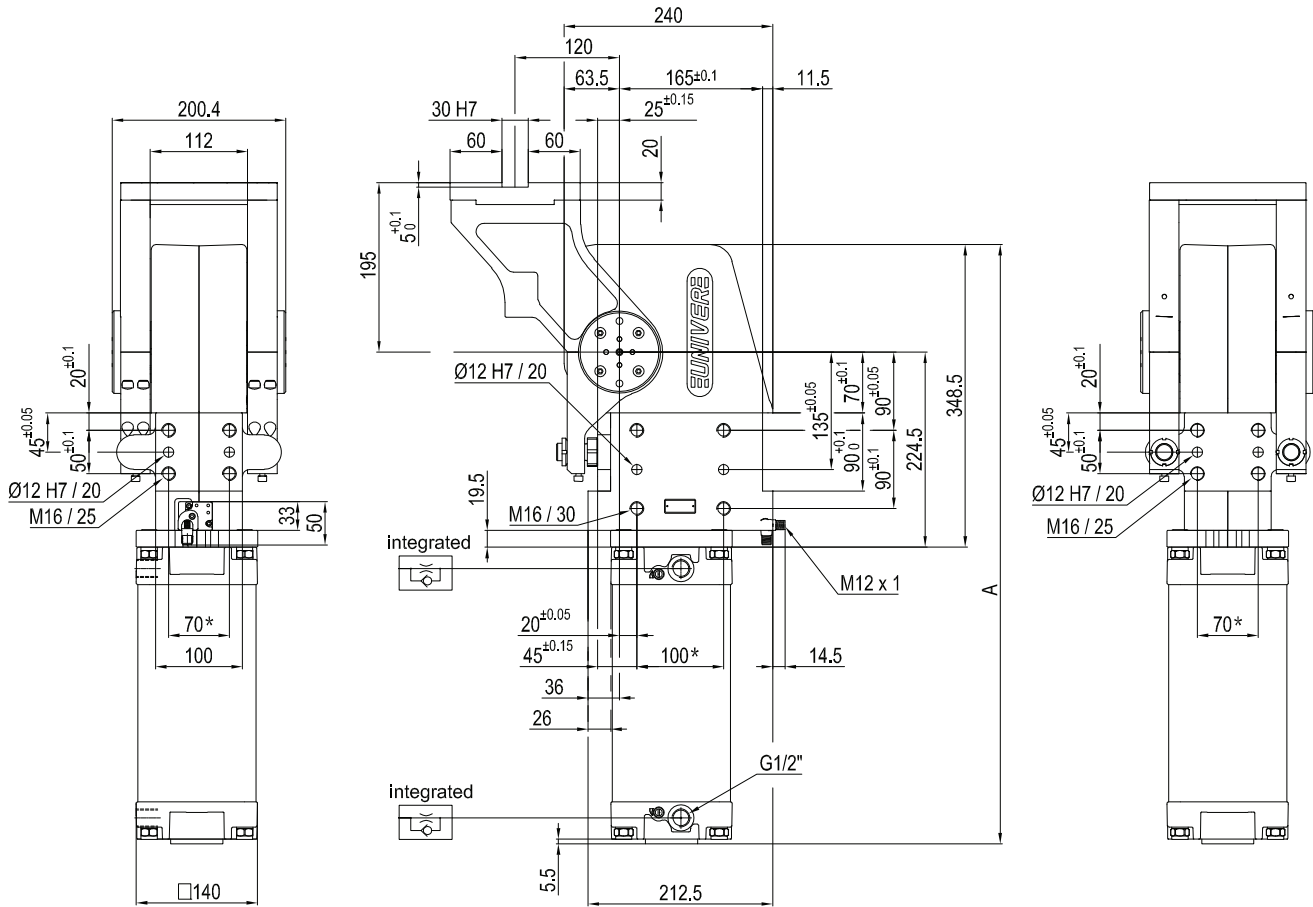
S = Lato sinistro
D = Lato destro
F = Lato frontale
P = Lato posteriore

Assegnato da UNIVER



UNIVER SpA raccomanda di far convalidare all'ufficio tecnico UNIVER tutte le applicazioni di Unità Rotanti

UAGP215OK__WS0



Pivot rotation in degrees	A
45°	597
60°	613
90°	649.5
120°	690

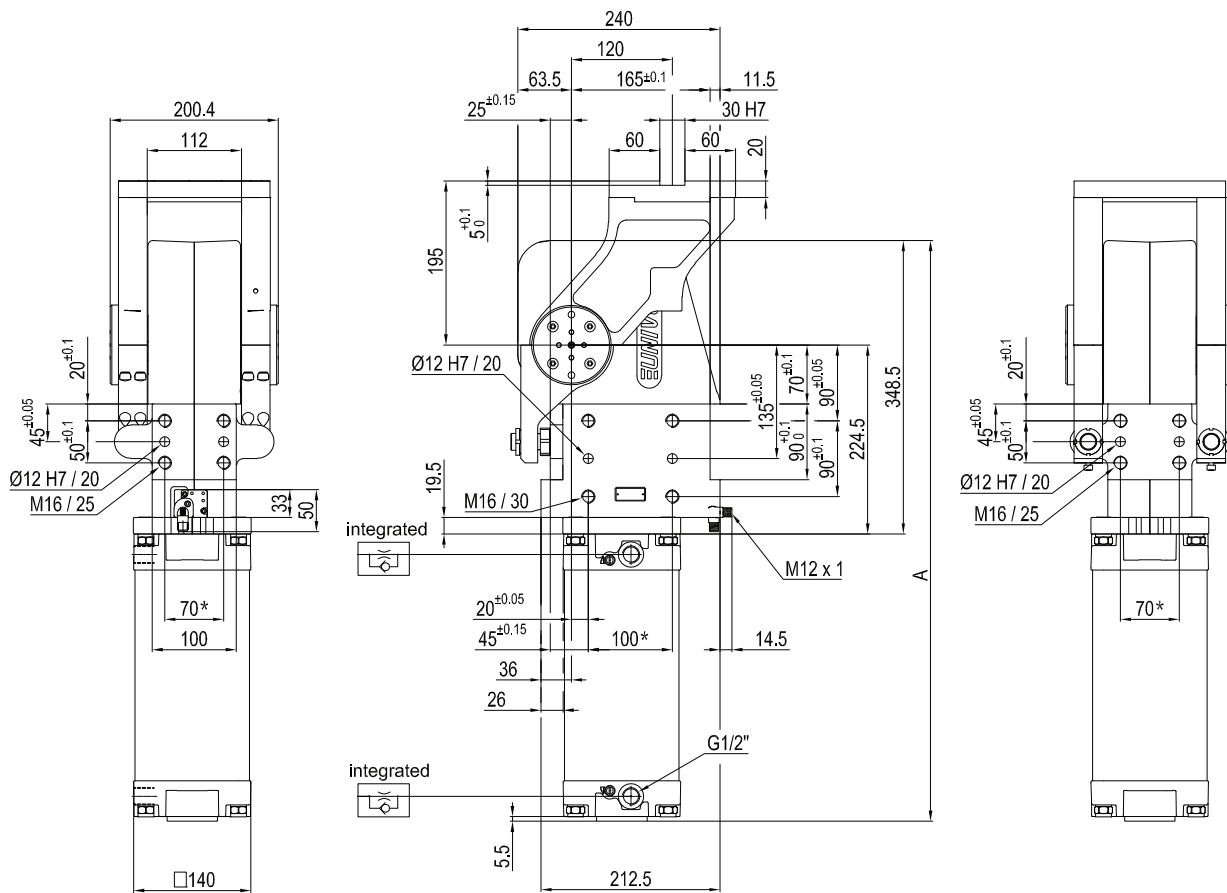
Size	Holding moment	Max. torque at the rotary table 0,55 MPa	Weight
215	8000 Nm	210 Nm	43 Kg

Min./Max. operating pressure: **0,4 / 0,6 MPa**
 Operating temperature: **5° ÷ 45° C**
 Predetermine pivot rotation in degrees: **45°- 60°- 90°- 120°**
 Rotary table position: **Horizontal 90°**
 Electronic sensor with M12 swivel connector, from 0° or 90°, in steps of 10°
 Supply voltage: 10 ÷ 30 Vdc
 IP code: **IP 65**

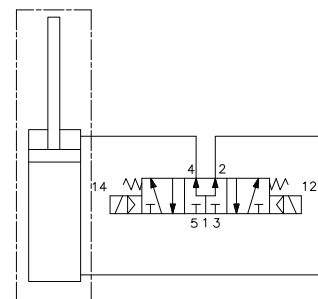
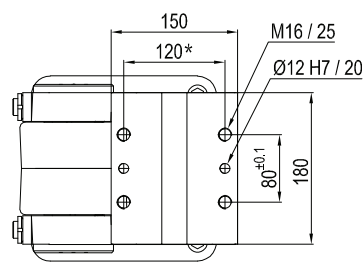
*: TOLERANCE BETWEEN DOWEL HOLES $\pm 0,02$, BETWEEN SCREW HOLES $\pm 0,1$

Subject to technical modifications without notice

UAGP215PK__WSO



Pivot rotation in degrees	A
45°	597
60°	613



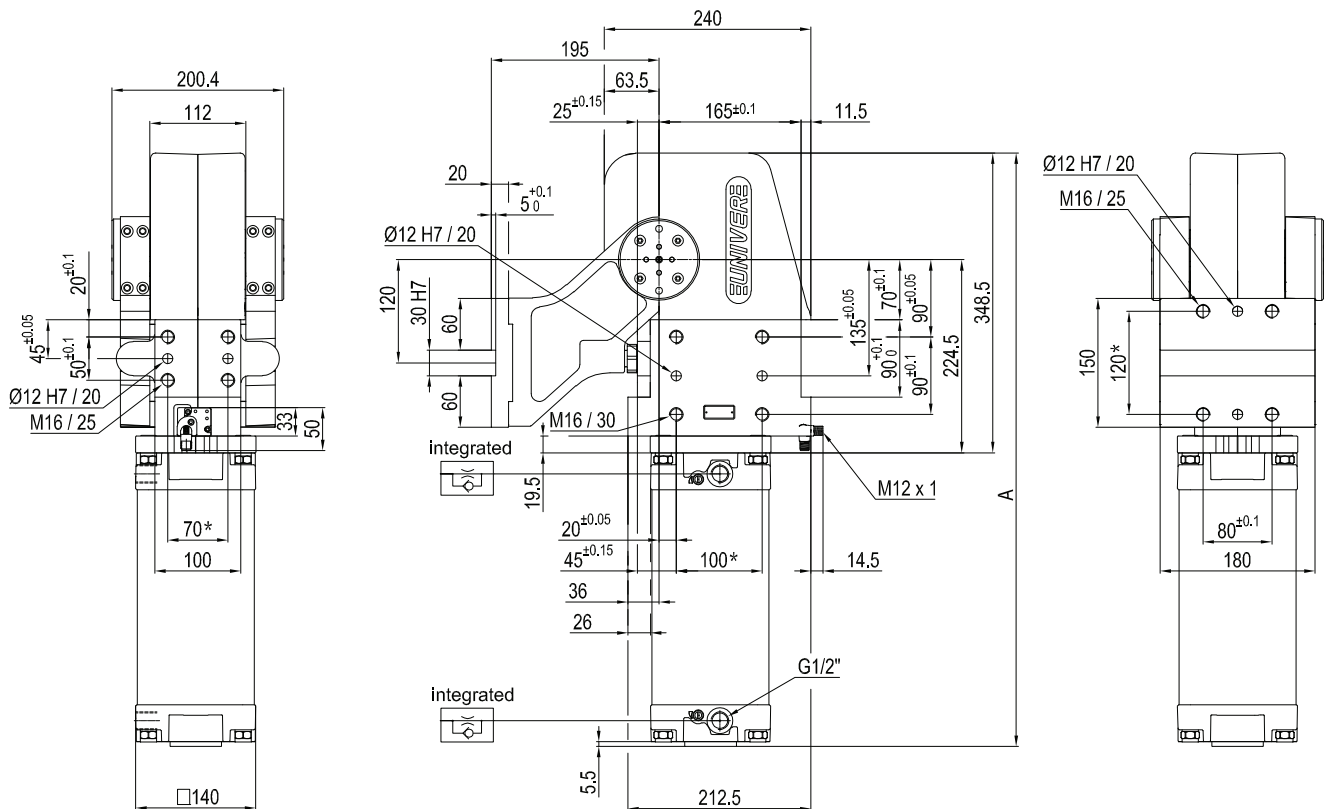
Größe	Haltemoment	Max. Drehmoment 0,55 MPa	Gewicht
215	8000 Nm	210 Nm	43 Kg

*: TOLERANZ ZWISCHEN STIFTBOHRUNGEN ± 0,02, GEWINDEBOHRUNGEN ± 0,1

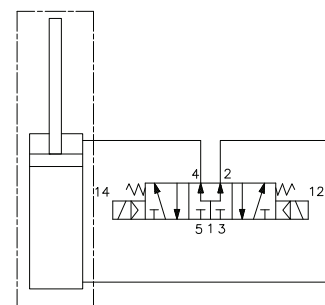
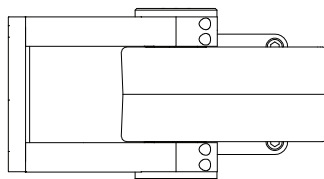
Min / Max Betriebsdruck: **0,4 / 0,6 MPa**
 Betriebstemperatur: **5° ÷ 45° C**
 Fest voreingestellter Öffnungswinkel: **45°- 60°**
 Drehtischstellung: **Waagrecht, O Lage gespiegelt**
 Elektronischer Sensor mit M12 schwenkbarem Stecker
 (von 0° bis 90° orientierbar, in Schritten von 10°)
 Versorgungsspannung: **10÷30Vdc**
 Schutzart: **IP65**

Technische Änderungen vorbehalten

UAGP215VK__WSO



Pivot rotation in degrees	A
45°	597
60°	613
90°	649.5
120°	690



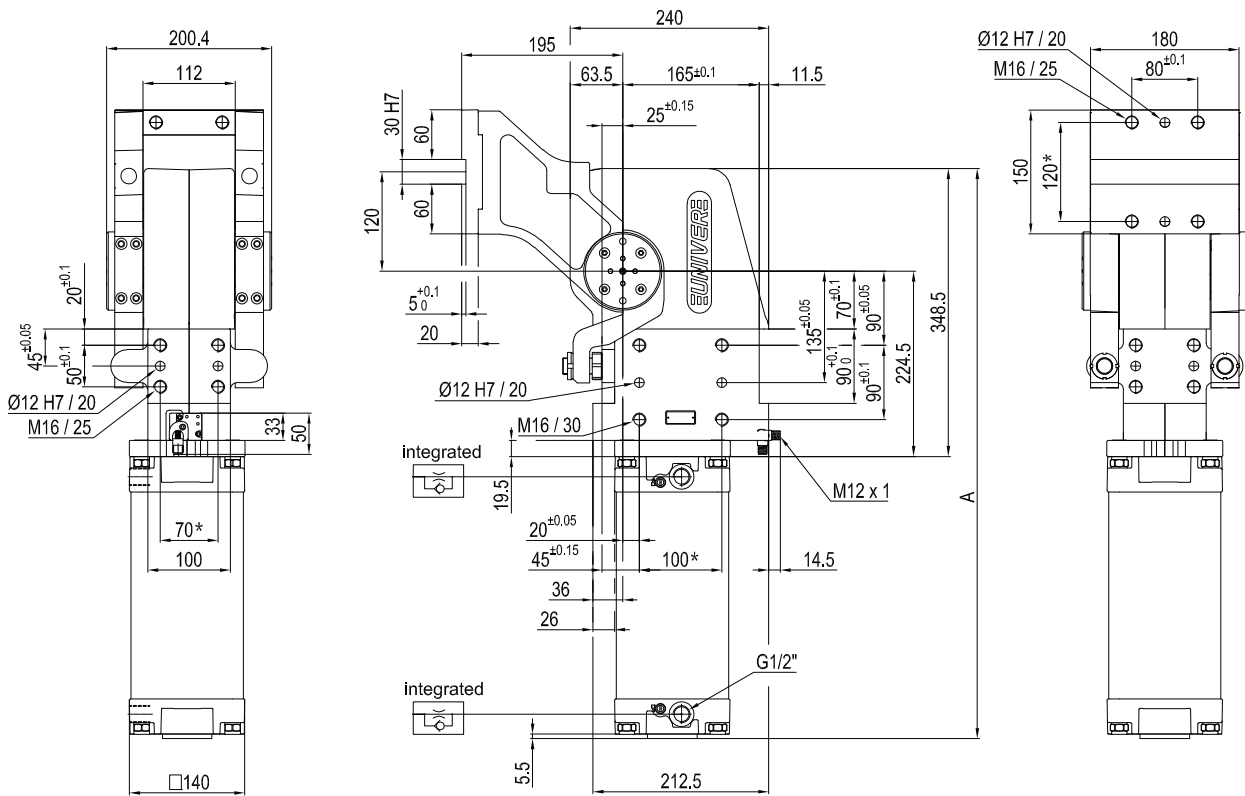
Size	Holding moment	Max. torque at the rotary table 0,55 MPa	Weight
215	8000 Nm	210 Nm	43 Kg

Min./Max. operating pressure: **0,4 / 0,6 MPa**
 Operating temperature: **5° ÷ 45° C**
 Predetermine pivot rotation in degrees: **45°- 60°- 90°-120°**
 Rotary table position: **Vertical 180°**
 Electronic sensor with M12 swivel connector, from 0° or 90°, in steps of 10°
 Supply voltage: 10 ÷ 30 Vdc
 IP code: **IP 65**

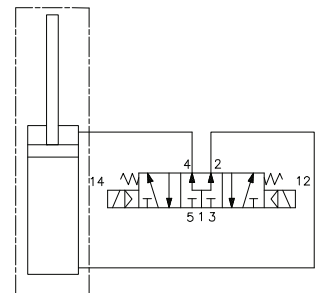
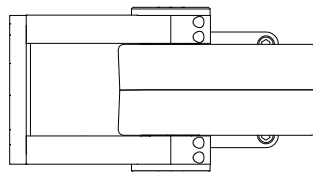
*: TOLERANCE BETWEEN DOWEL HOLES $\pm 0,02$, BETWEEN SCREW HOLES $\pm 0,1$

Subject to technical modifications without notice

UAGP215ZK_ _ _WS0



Pivot rotation in degrees	A
45°	597
60°	613
90°	649.5
120°	690



Size	Holding moment	Max. torque at the rotary table 0,55 MPa	Weight
215	8000 Nm	210 Nm	43 Kg

 Min./Max. operating pressure: **0,4 / 0,6 MPa**

 Operating temperature: **5° ÷ 45° C**

 Predetermine pivot rotation in degrees: **45°- 60°- 90°-120°**

 Rotary table position: **Vertical mirror of V**

Electronic sensor with M12 swivel connector, from 0° or 90°, in steps of 10°

Supply voltage: 10 ÷ 30 Vdc

 IP code: **IP 65**

*: TOLERANCE BETWEEN DOWEL HOLES ± 0,02, BETWEEN SCREW HOLES ± 0,1

Subject to technical modifications without notice