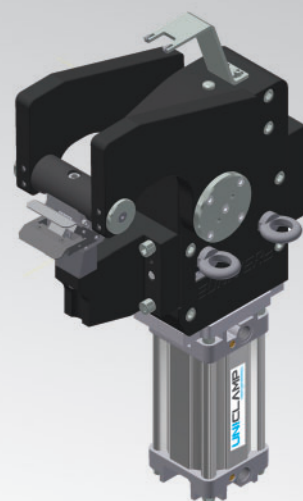


UPR05

Unità di marcatura UNICLAMP



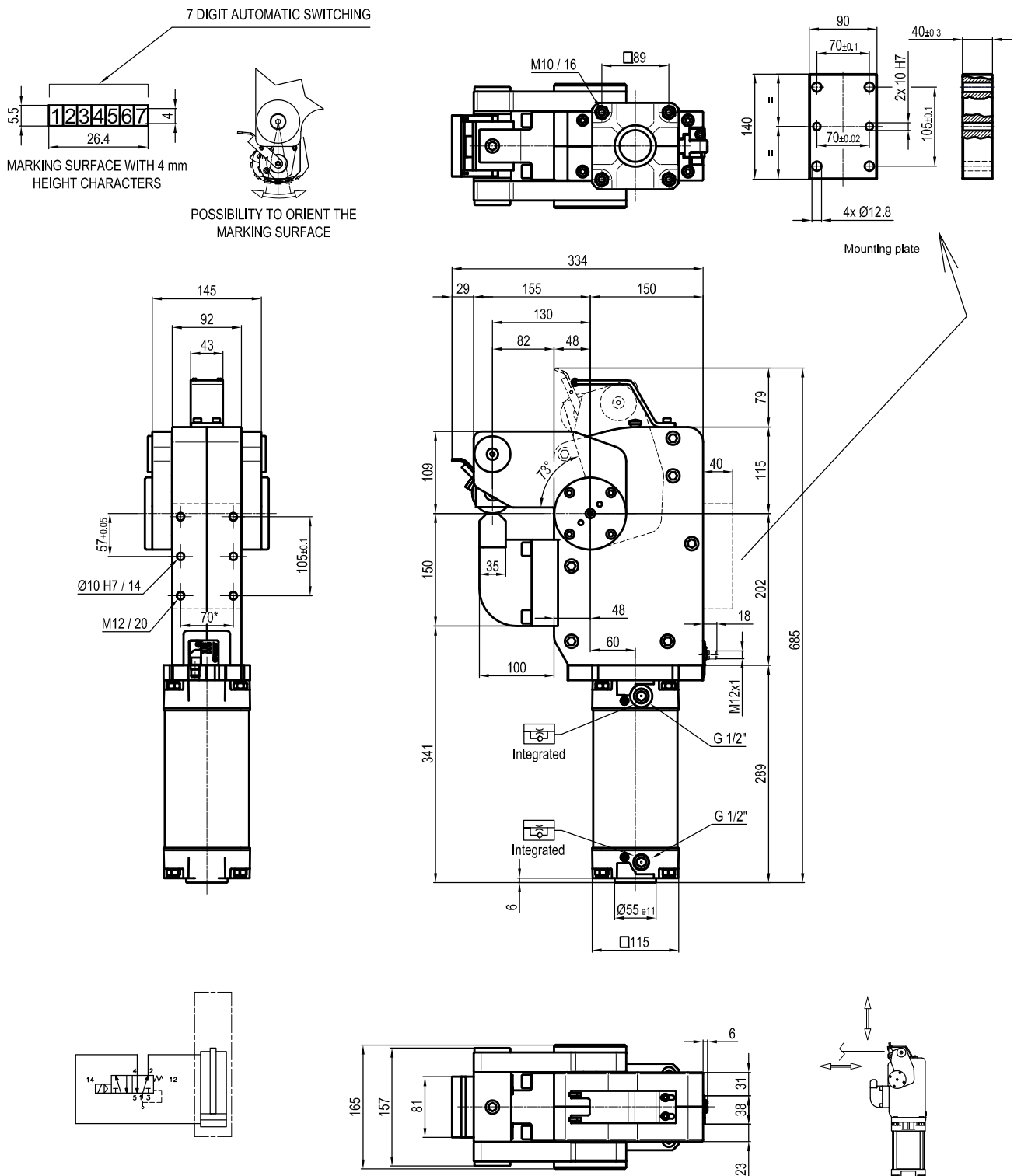
| | | | | | | | | | | | | | |
|---|---|---|---|---|---|---|---|---|---|---|---|---|---|
| U | P | R | 0 | 5 | 0 | 8 | 7 | 3 | M | E | E | S | 0 |
| 1 | | | 2 | | 3 | | 4 | | 5 | 6 | | 7 | 8 |

| | | |
|-----------------------------------|---------------------------------|---------------------------|
| 1 Serie | 2 Versione | 3 Taglia |
| UPR = Unità di marcatura UNICLAMP | 05 = 5000 Nm, cilindro Ø 100 mm | 08 = 80 mm 13 = 130 mm |

| | | |
|-----------------------------------|---|--|
| 4 Angolo di apertura | 5 Posizione montaggio testa di marcatura | 6 Numerazione progressiva |
| 73 = 73° angolo di apertura fisso | M = Sulla parte mobile F = Sulla parte fissa | EE = Versione standard La numerazione è a cura dell'Ufficio Commerciale |

| | |
|---|-----------------------------|
| 7 Connessioni | 8 Revisione prodotto |
| D = Lato destro (a destra del sensore) F = Frontale (lato opposto al sensore) P = Posteriore (lato sensore) S = Lato sinistro (a sinistra del sensore) | Assegnato da UNIVER |

UPR050873MEE_0

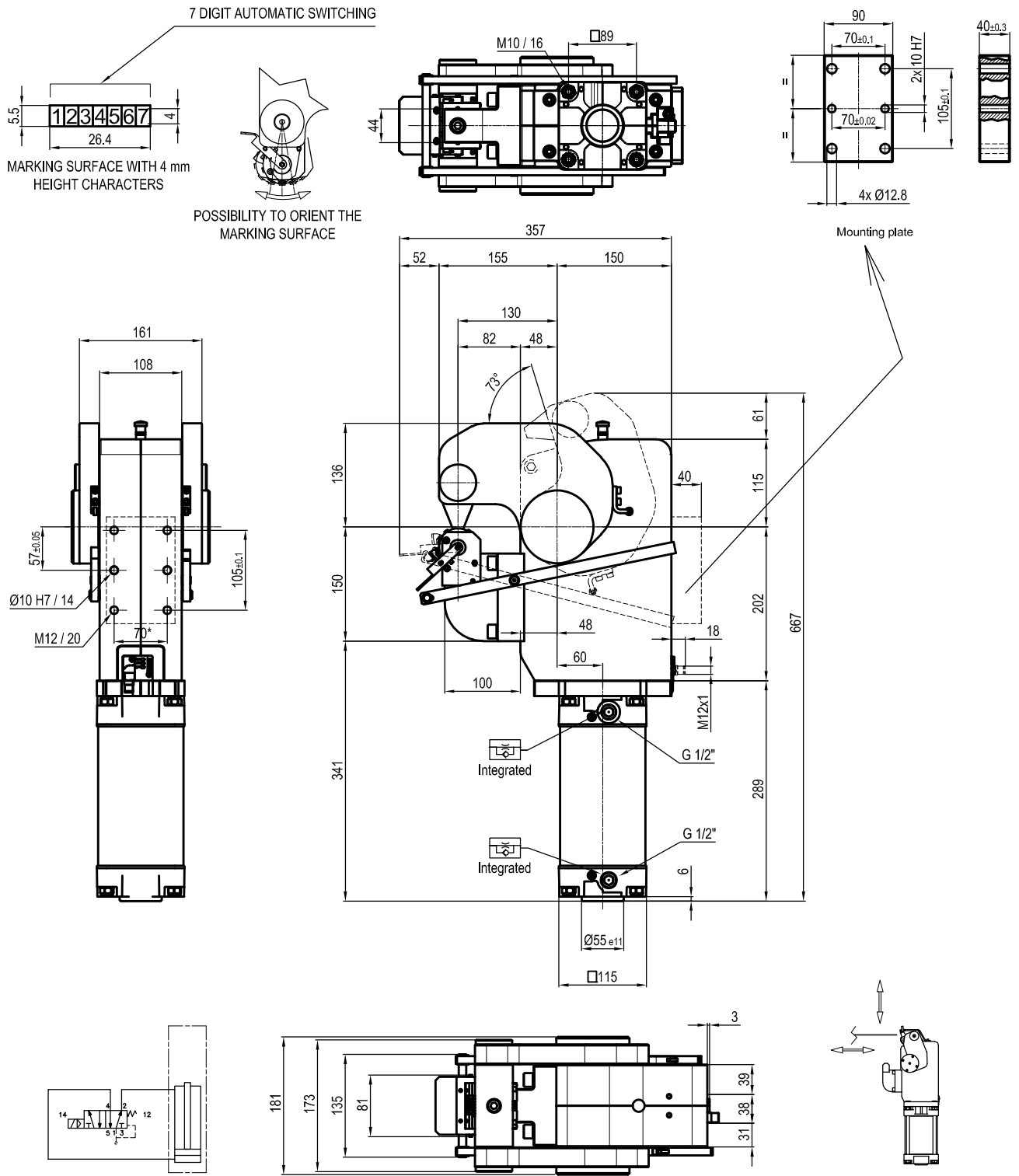


| Size | Cylinder | Moment 0,5 MPa | Marking force 0,5 MPa | Weight | Air/cycle 0,5 MPa |
|------|----------|-------------------|--------------------------|--------|----------------------|
| 500 | 100 | 5000 Nm | 38,5 KN | 71 Kg | 11,2 NI |

Min./Max. operating pressure: **0,4 / 0,6 MPa**
 Operating temperature: **5° ÷ 45° C**
 Opening angle: **73°**
 Possibility to orientate the marking surface
 Electronic sensor with M12 swivel connector, from 0° to 90°,
 in steps of 10°
 Supply voltage: **10 ÷ 30 Vdc**
 IP code: **IP 65**

* : TOLERANCE BETWEEN DOWEL HOLES ± 0,02, BETWEEN SCREW HOLES ± 0,1

UPR050873FEE_0

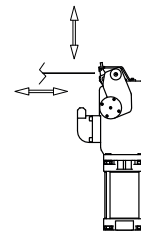
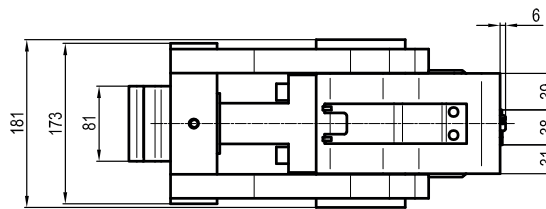
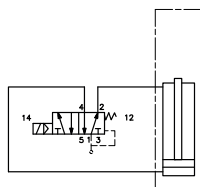
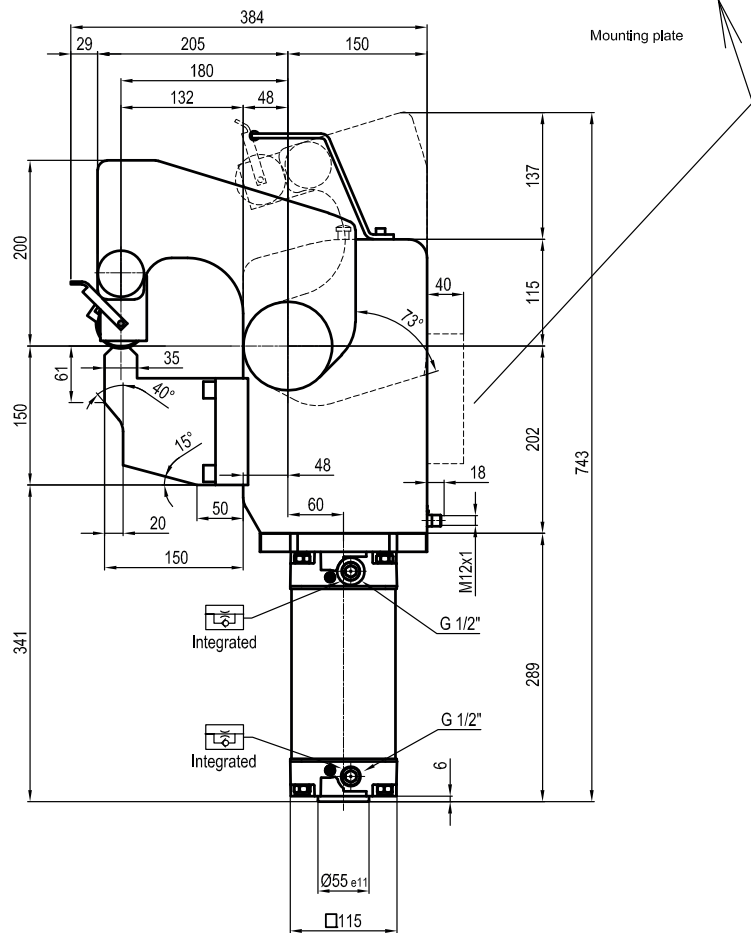
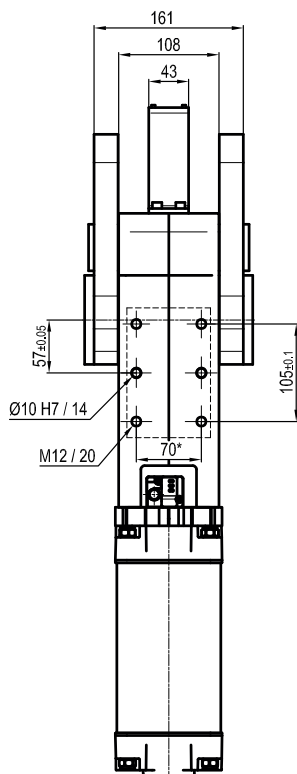
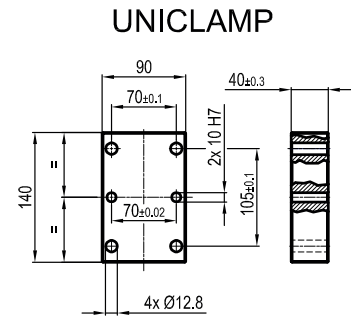
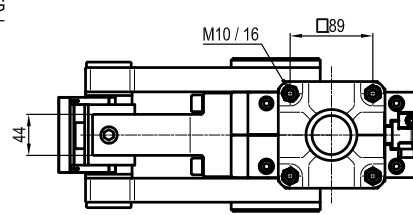
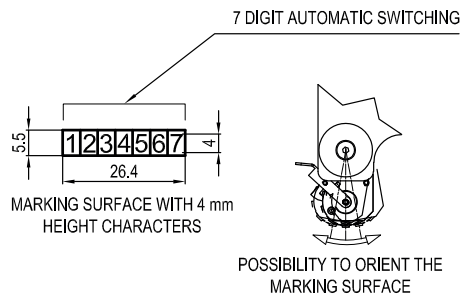


| Size | Cylinder | Moment 0,5 MPa | Marking force 0,5 MPa | Weight | Air/cycle 0,5 MPa |
|------|----------|-------------------|--------------------------|--------|----------------------|
| 500 | 100 | 5000 Nm | 38,5 KN | 71 Kg | 11,2 NI |

Min./Max. operating pressure: **0,4 / 0,6 MPa**
 Operating temperature: **5° ÷ 45° C**
 Opening angle: **73°**
 Possibility to orientate the marking surface
 Electronic sensor with M12 swivel connector, from 0° to 90°,
 in steps of 10°
 Supply voltage: **10 ÷ 30 Vdc**
 IP code: **IP 65**

* : TOLERANCE BETWEEN DOWEL HOLES ± 0,02, BETWEEN SCREW HOLES ± 0,1

UPR051373MEE_0

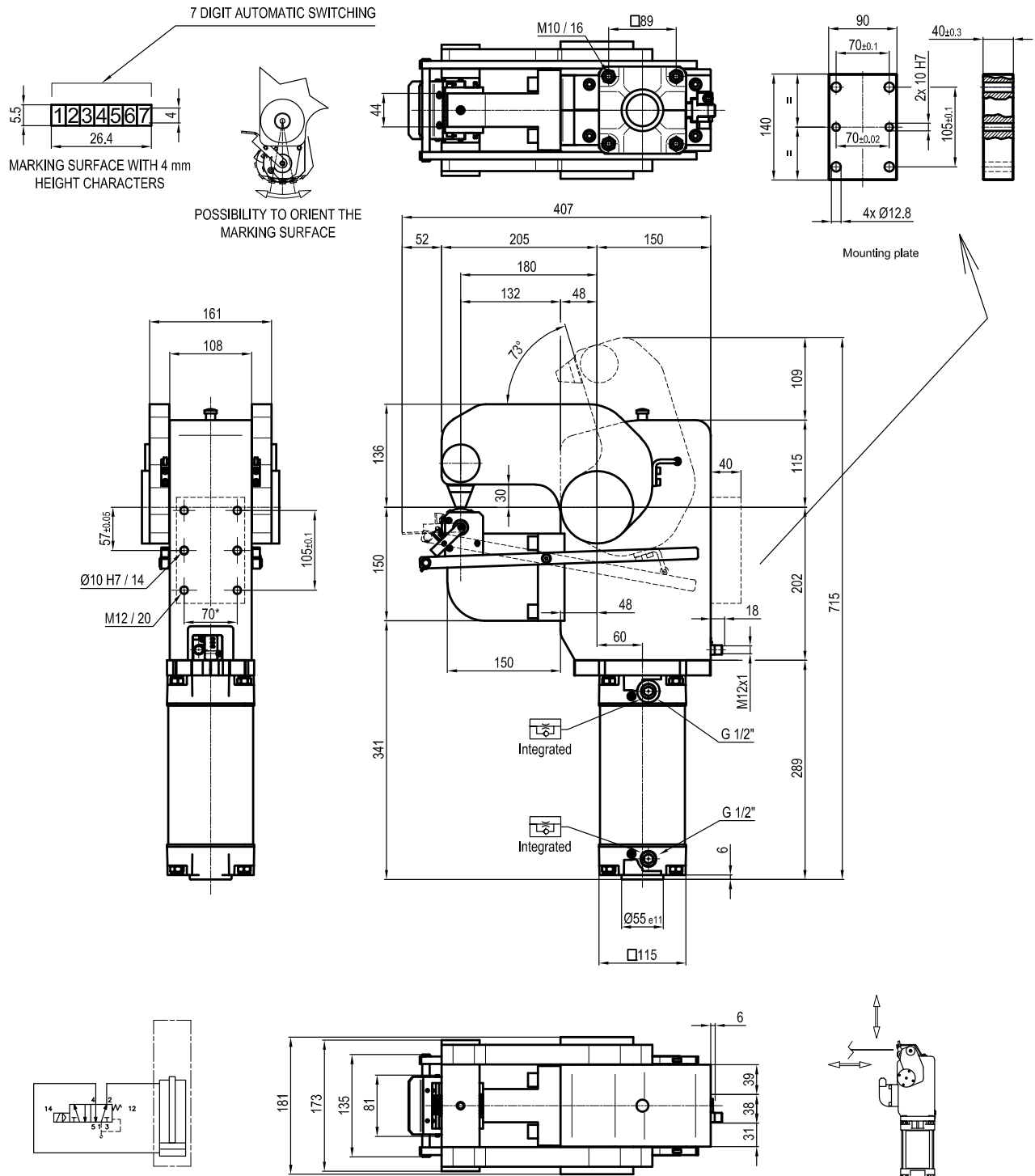


| Size | Cylinder | Moment 0,5 MPa | Marking force 0,5 MPa | Weight | Air/cycle 0,5 MPa |
|------|----------|-------------------|--------------------------|--------|----------------------|
| 500 | 100 | 5000 Nm | 27,8 KN | 77 Kg | 11,2 NI |

Min./Max. operating pressure: **0,4 / 0,6 MPa**
 Operating temperature: **5° ÷ 45° C**
 Opening angle: **73°**
 Possibility to orientate the marking surface
 Electronic sensor with M12 swivel connector, from 0° to 90°,
 in steps of 10°
 Supply voltage: **10 ÷ 30 Vdc**
 IP code: **IP 65**

* : TOLERANCE BETWEEN DOWEL HOLES ± 0,02, BETWEEN SCREW HOLES ± 0,1

UPR051373FEE_0



| Size | Cylinder | Moment 0,5 MPa | Marking force 0,5 MPa | Weight | Air/cycle 0,5 MPa |
|------|----------|-------------------|--------------------------|--------|----------------------|
| 500 | 100 | 5000 Nm | 27,8 kN | 77 Kg | 11,2 NI |

Min./Max. operating pressure: **0,4 / 0,6 MPa**
 Operating temperature: **5° ÷ 45° C**
 Opening angle: **73°**
 Possibility to orientate the marking surface
 Electronic sensor with M12 swivel connector, from 0° to 90°,
 in steps of 10°
 Supply voltage: **10 ÷ 30 Vdc**
 IP code: **IP 65**

* : TOLERANCE BETWEEN DOWEL HOLES ± 0,02, BETWEEN SCREW HOLES ± 0,1