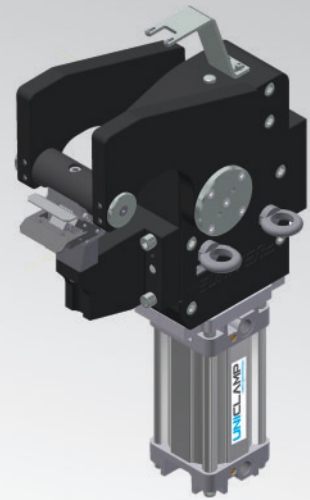


UPR05

UNICLAMP Marking units



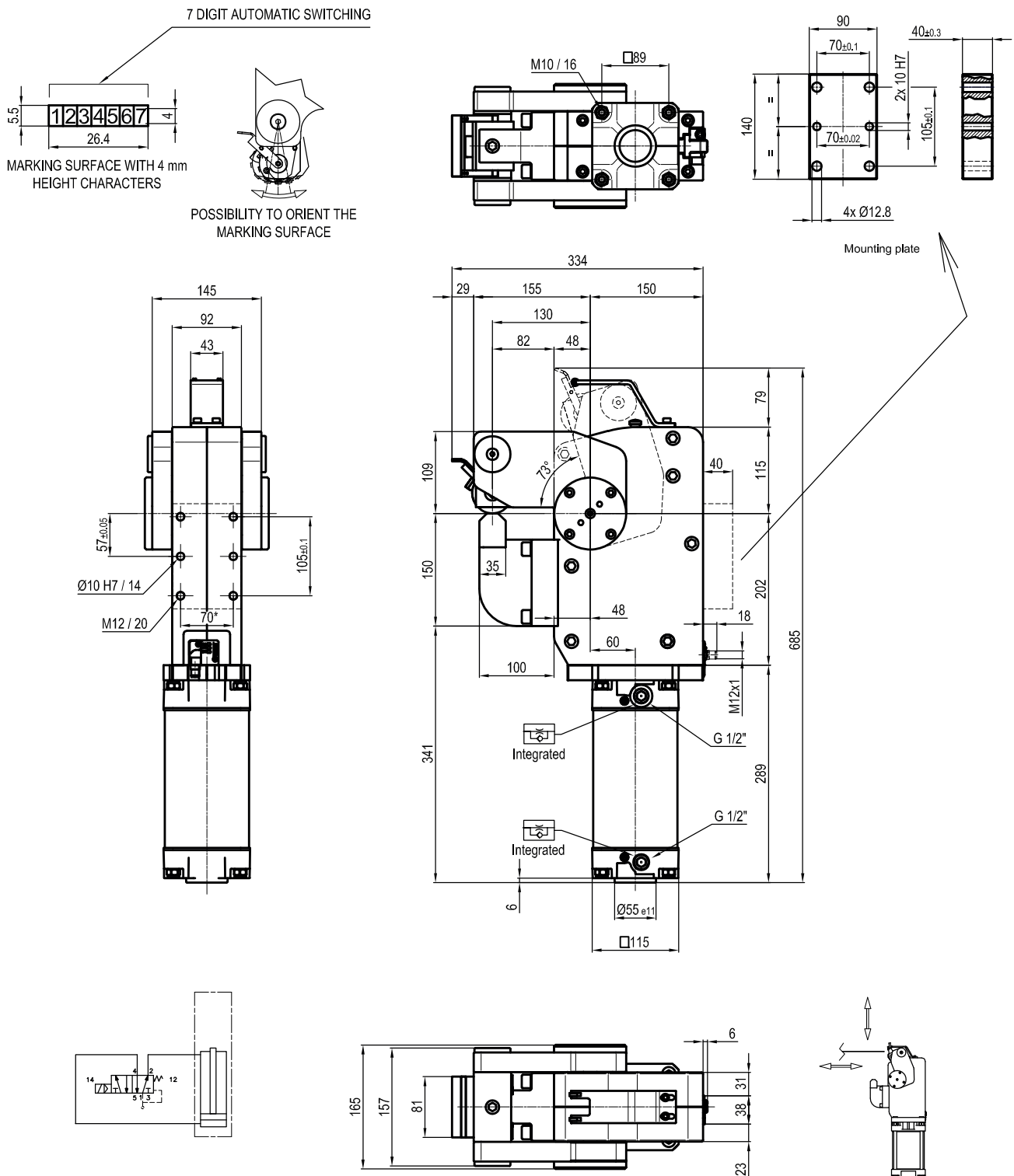
U	P	R	0	5	0	8	7	3	M	E	E	S	0
1			2		3		4		5	6		7	8

1 Series	2 Version	3 Size
UPR = UNICLAMP Marking units	05 = 5000 Nm, Ø 100 mm cylinder	08 = 80 mm 13 = 130 mm

4 Opening angle	5 Marking head mounting position	6 Progressive number
73 = 73° fixed opening angle	M = on the moving part F = on the fixed part	EE = Standard version Progressive numbers are assigned by the Sales dept.

7 Connections	8 Product revision
D = Right (sensor right side) F = Front side (in front of the sensor) P = Rear side (same side as sensor) S = Left (sensor left side)	Assigned by UNIVER

UPR050873MEE_0

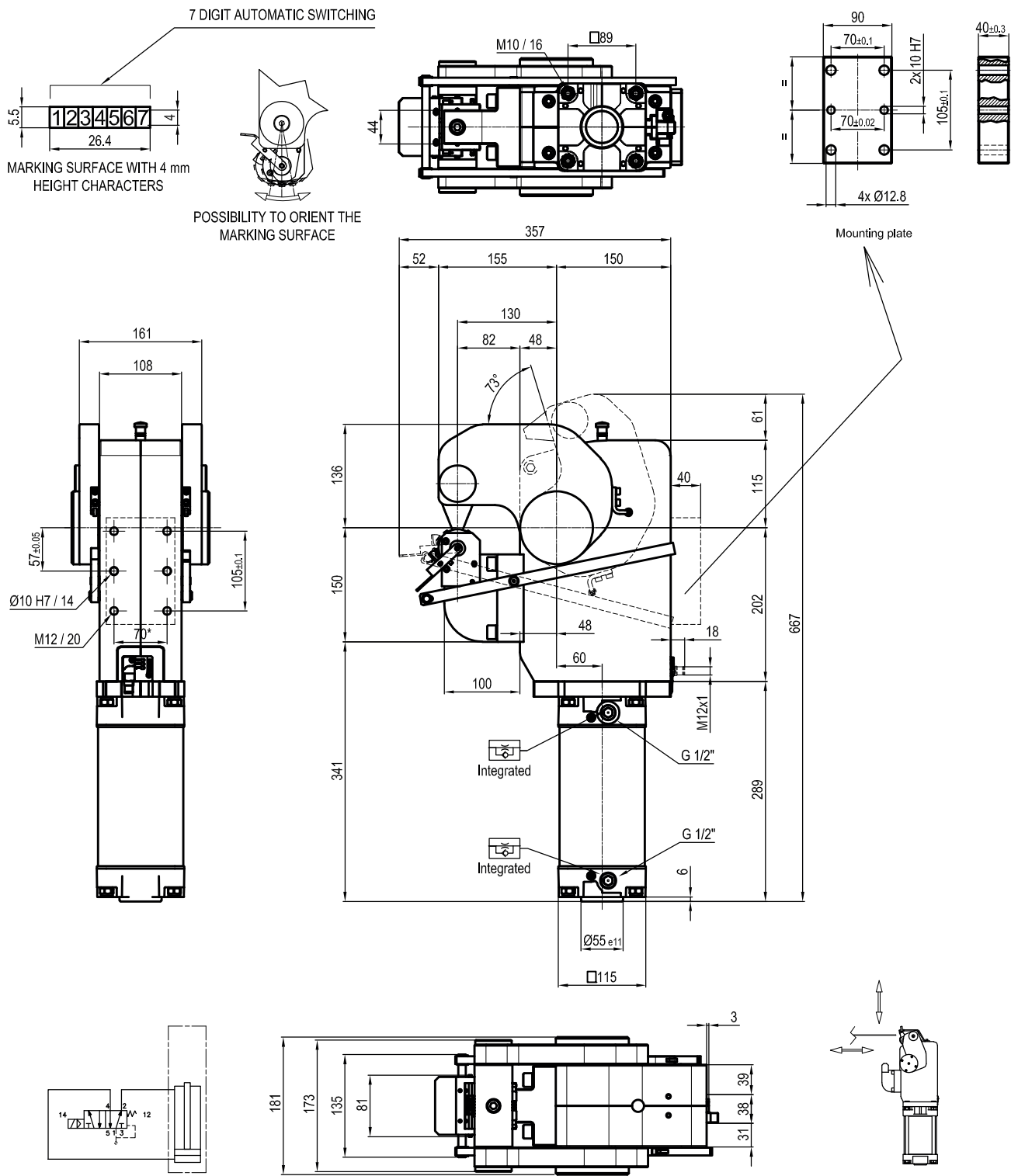


Size	Cylinder	Moment 0,5 MPa	Marking force 0,5 MPa	Weight	Air/cycle 0,5 MPa
500	100	5000 Nm	38,5 KN	71 Kg	11,2 NI

Min./Max. operating pressure: **0,4 / 0,6 MPa**
 Operating temperature: **5° ÷ 45° C**
 Opening angle: **73°**
 Possibility to orientate the marking surface
 Electronic sensor with M12 swivel connector, from 0° to 90°,
 in steps of 10°
 Supply voltage: **10 ÷ 30 Vdc**
 IP code: **IP 65**

* : TOLERANCE BETWEEN DOWEL HOLES ± 0,02, BETWEEN SCREW HOLES ± 0,1

UPR050873FEE_0



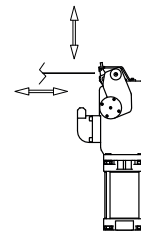
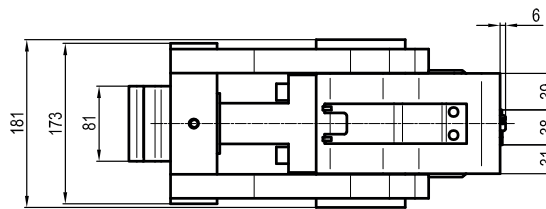
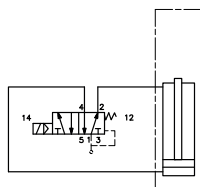
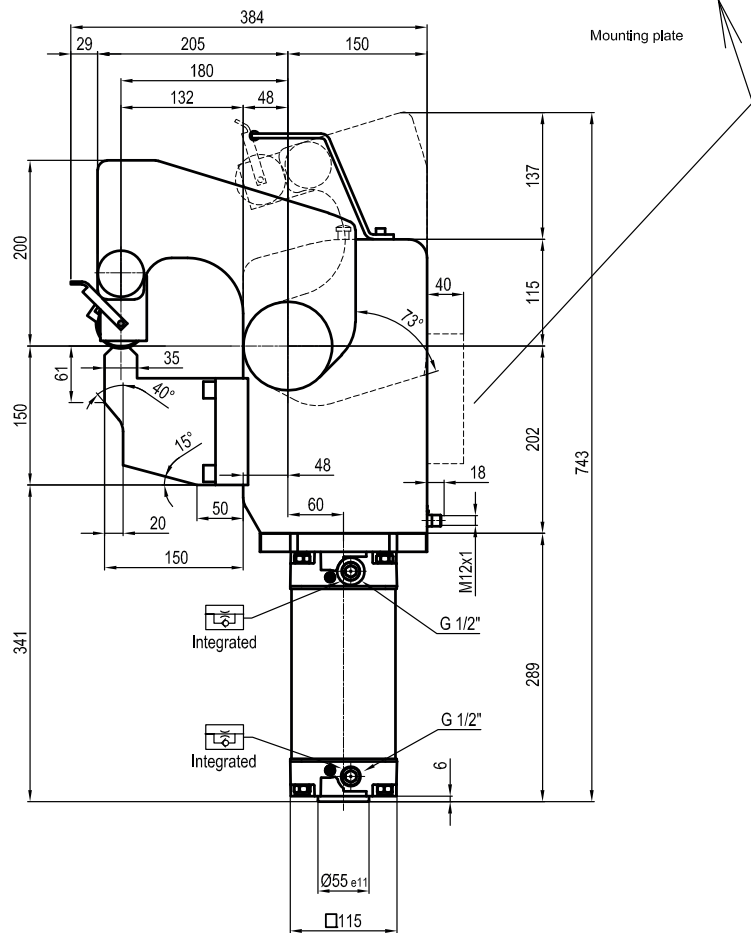
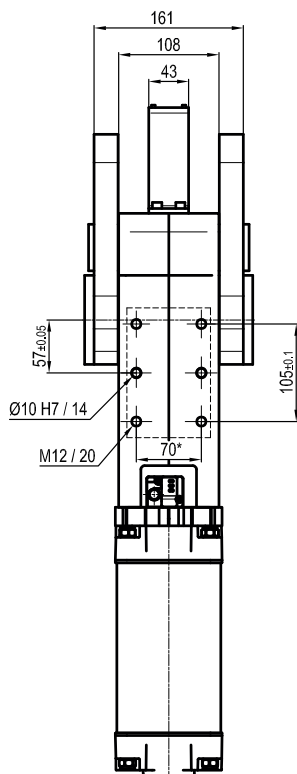
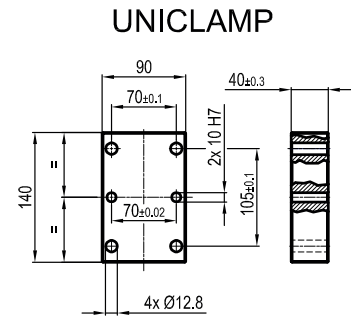
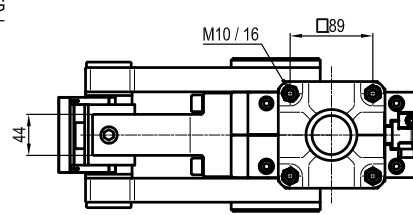
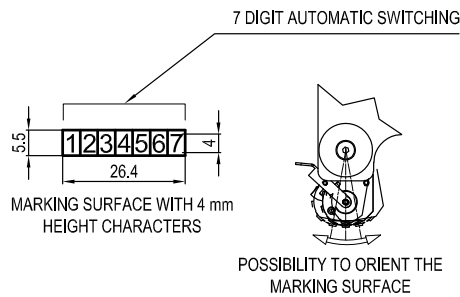
Size	Cylinder	Moment 0,5 MPa	Marking force 0,5 MPa	Weight	Air/cycle 0,5 MPa
500	100	5000 Nm	38,5 KN	71 Kg	11,2 NI

Min./Max. operating pressure: **0,4 / 0,6 MPa**
 Operating temperature: **5° ÷ 45° C**
 Opening angle: **73°**
 Possibility to orientate the marking surface
 Electronic sensor with M12 swivel connector, from 0° to 90°,
 in steps of 10°
 Supply voltage: **10 ÷ 30 Vdc**
 IP code: **IP 65**

* : TOLERANCE BETWEEN DOWEL HOLES ± 0,02, BETWEEN SCREW HOLES ± 0,1

Subject to technical modifications without notice

UPR051373MEE_0

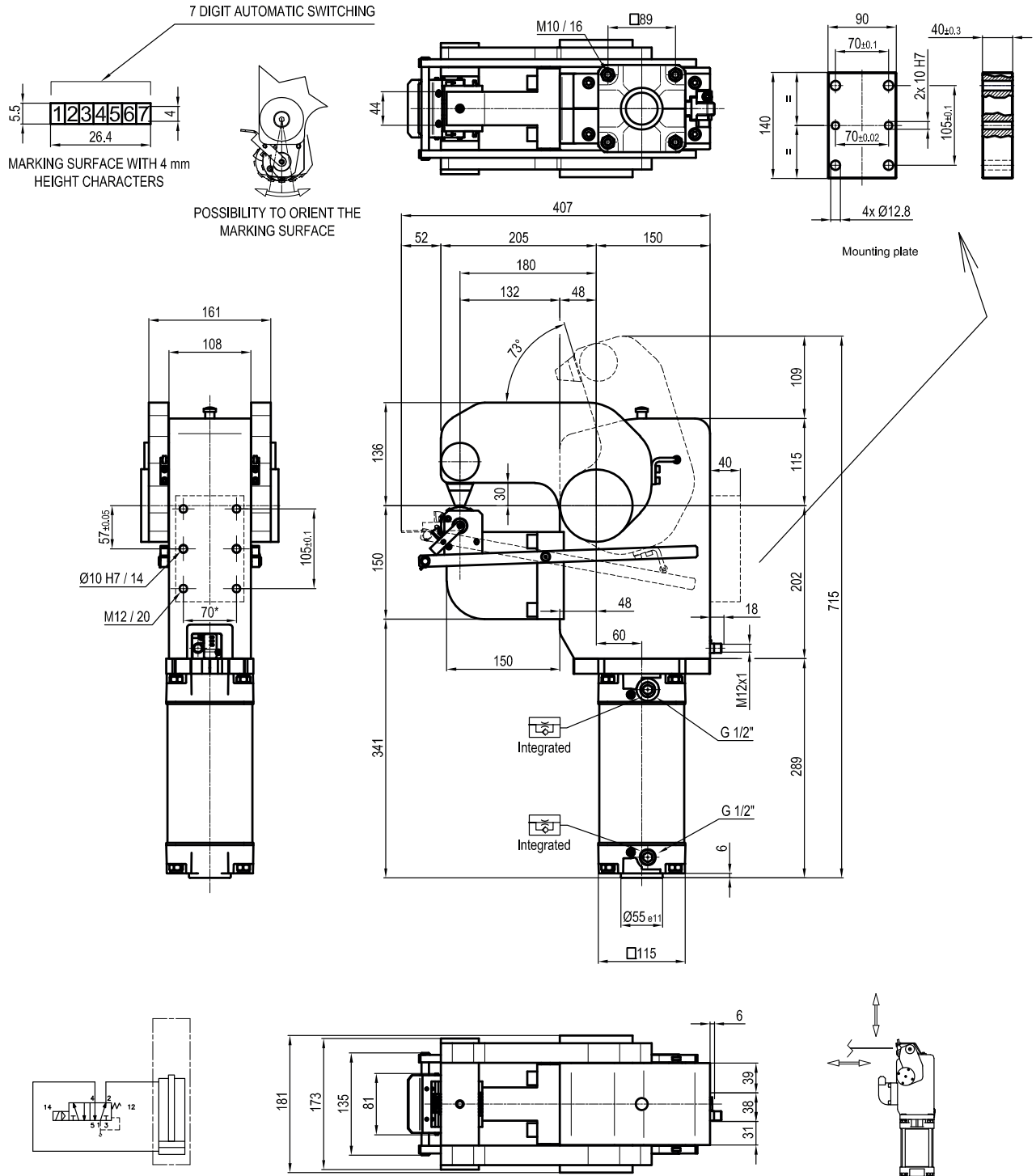


Size	Cylinder	Moment 0,5 MPa	Marking force 0,5 MPa	Weight	Air/cycle 0,5 MPa
500	100	5000 Nm	27,8 kN	77 Kg	11,2 NI

Min./Max. operating pressure: **0,4 / 0,6 MPa**
 Operating temperature: **5° ÷ 45° C**
 Opening angle: **73°**
 Possibility to orientate the marking surface
 Electronic sensor with M12 swivel connector, from 0° to 90°,
 in steps of 10°
 Supply voltage: **10 ÷ 30 Vdc**
 IP code: **IP 65**

* : TOLERANCE BETWEEN DOWEL HOLES ± 0,02, BETWEEN SCREW HOLES ± 0,1

UPR051373FEE_0



Size	Cylinder	Moment 0,5 MPa	Marking force 0,5 MPa	Weight	Air/cycle 0,5 MPa
500	100	5000 Nm	27,8 kN	77 Kg	11,2 NI

Min./Max. operating pressure: **0,4 / 0,6 MPa**
 Operating temperature: **5° ÷ 45° C**
 Opening angle: **73°**
 Possibility to orientate the marking surface
 Electronic sensor with M12 swivel connector, from 0° to 90°,
 in steps of 10°
 Supply voltage: **10 ÷ 30 Vdc**
 IP code: **IP 65**

* : TOLERANCE BETWEEN DOWEL HOLES ± 0,02, BETWEEN SCREW HOLES ± 0,1

Subject to technical modifications without notice

Rev. 01 23.09.20