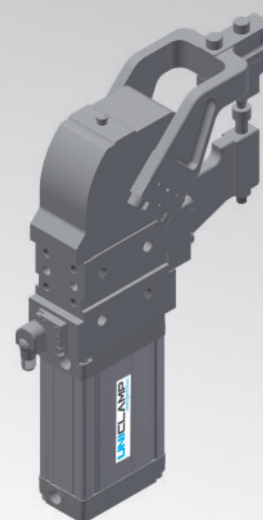


UPD02

Unità di marcatura UNICLAMP a 1 carattere



U	P	D	0	2	0	8	O	R	M	0	0	F	0
1			2		3		4	5		6		7	8

1 Serie	2 Versione	3 Taglia
----------------	-------------------	-----------------

UPD = Unità di marcatura UNICLAMP a 1 carattere

02 = 250 Nm, cilindro Ø 63 mm

08 = 84 mm

4 Angolo di apertura	5 Posizione montaggio testa di marcatura	6 Carattere
-----------------------------	---	--------------------

OR = 120° regolabile

M = Sulla parte mobile
F = Sulla parte fissa

00 = Versione standard (senza carattere)

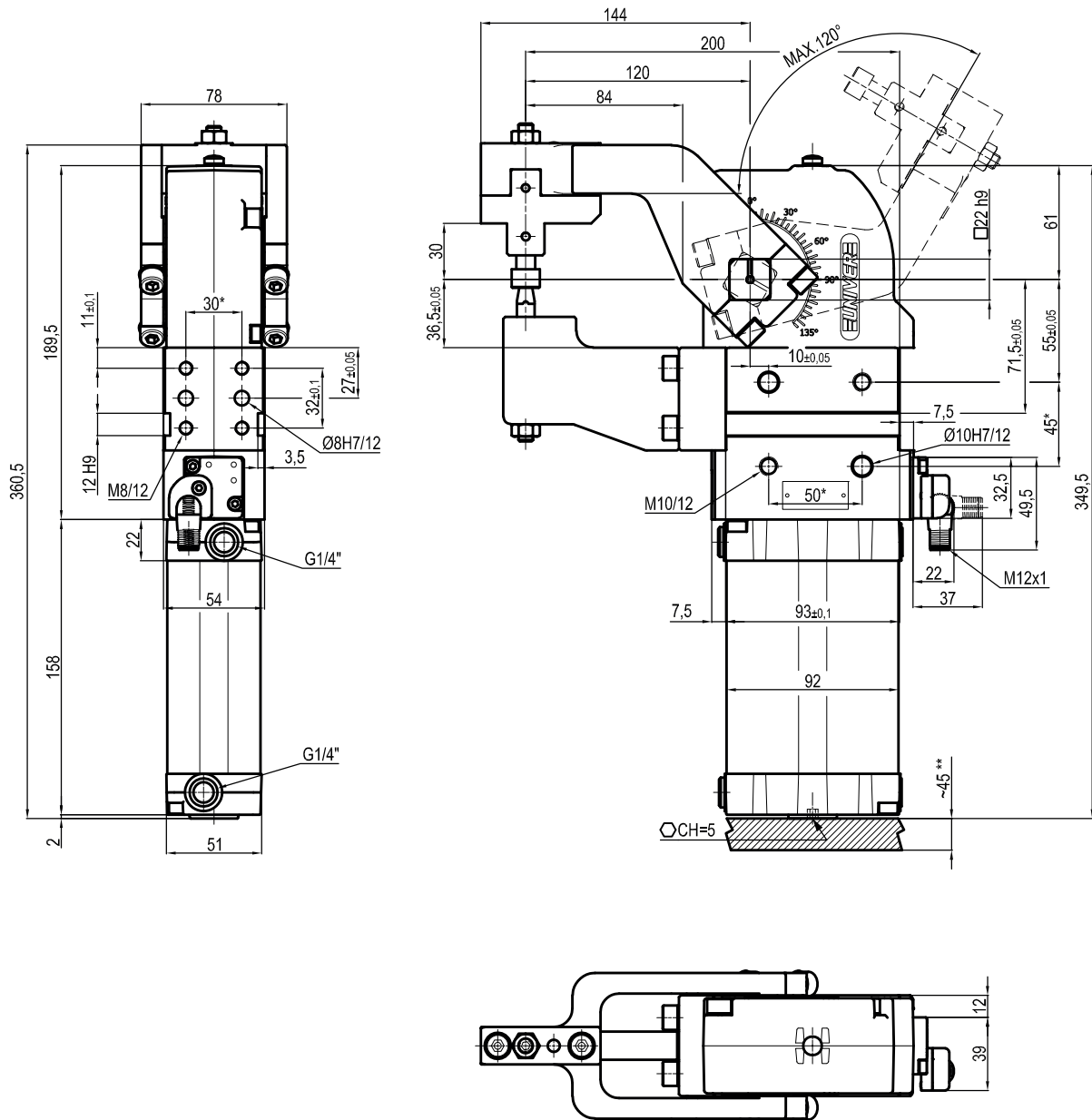
La numerazione è a cura dell'Ufficio Commerciale

7 Connessioni	8 Revisione prodotto
----------------------	-----------------------------

F = Frontale (lato opposto al sensore)
P = Posteriore (lato sensore)

Assegnato da UNIVER

UPD0208ORF__F0

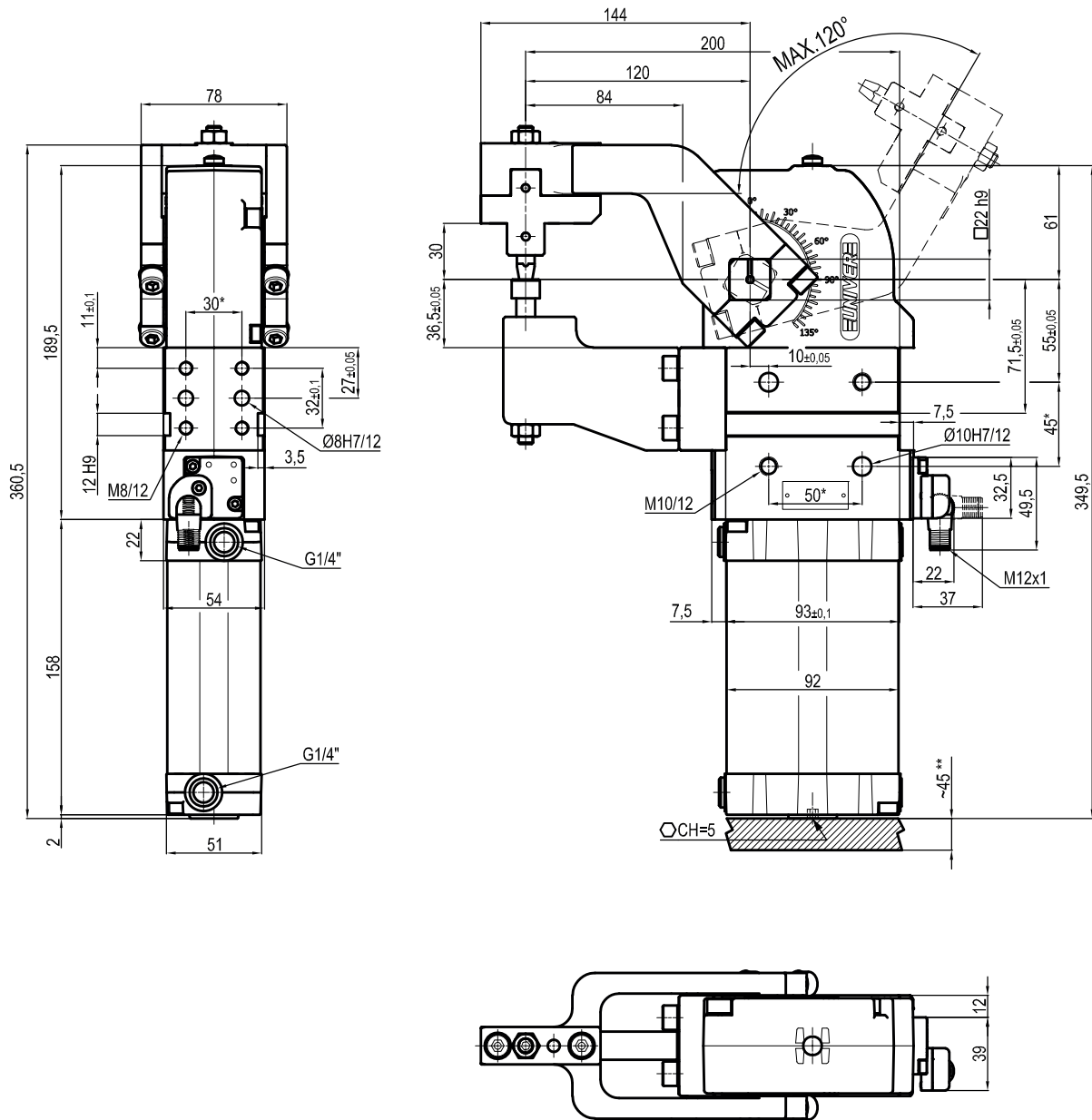


Bore Ø	Clamping moment (0,5 MPa)	Marking force (0,5 MPa)	Air/Cycle (0,5 MPa)	Weight
63 mm	250 Nm	2 KN	3,4 NI	6,1 Kg

* : TOLERANCE BETWEEN DOWELS $\pm 0,02$, BETWEEN SCREW HOLES $\pm 0,1$
 ***: AREA TO ACCES ANGLE ADJUSTMENT

Min./Max. operating pressure: **0,4 / 0,6 MPa**
 Operating temperature: **5° ± 45° C**
 Opening angle: **adjustable from 0° to 120°**
 Pneumatic ports on both sides
 Electronic sensor with M12 swivel connector, from 0° to 90°, in steps of 10°
 IP code: **IP 65**
 Pneumatic ports on both sides

UPD0208ORM__F0



Bore Ø	Clamping moment (0,5 MPa)	Marking force (0,5 MPa)	Air/Cycle (0,5 MPa)	Weight
63 mm	250 Nm	2 KN	3,4 NI	6,1 Kg

* : TOLERANCE BETWEEN DOWELS $\pm 0,02$, BETWEEN SCREW HOLES $\pm 0,1$
 ***: AREA TO ACCES ANGLE ADJUSTMENT

Min./Max. operating pressure: **0,4 / 0,6 MPa**
 Operating temperature: **5° ± 45° C**
 Opening angle: **adjustable from 0° to 120°**
 Pneumatic ports on both sides
 Electronic sensor with M12 swivel connector, from 0° to 90°, in steps of 10°
 IP code: **IP 65**
 Pneumatic ports on both sides