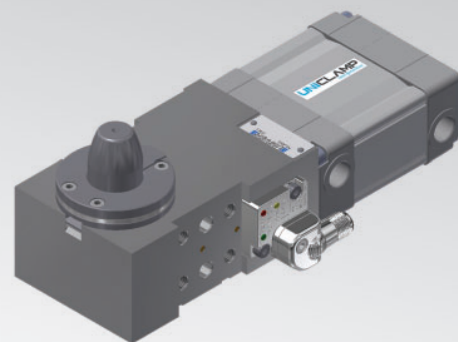


USP50U

Unità di bloccaggio e centraggio fori pneumatica UNICLAMP, a ingombro orizzontale



U	S	P	5	0	U	3	1	L	-	-	-	K	0
1	2	3	4	5	6	7	8	9	10				

1 Serie	2 Versione	3 Taglia
----------------	-------------------	-----------------

US = Unità di bloccaggio e centaggio fori UNICLAMP

P = Pneumatica

50 = Ø 50 mm

4 Modello	5 Diametro perno	6 Presenza perno di centraggio
------------------	-------------------------	---------------------------------------

U = Ingombro orizzontale

1 <= Ø 19 mm
2 = Ø 20 mm
3 = Ø 25 mm
4 = Ø 30 mm
5 = Ø 35 mm

0 = Perno di centraggio non incluso
1 = Perno di centraggio incluso

7 Posizione sensore	8 Numerazione progressiva	9 Sensore
----------------------------	----------------------------------	------------------

L = Lato sinistro
R = Lato destro

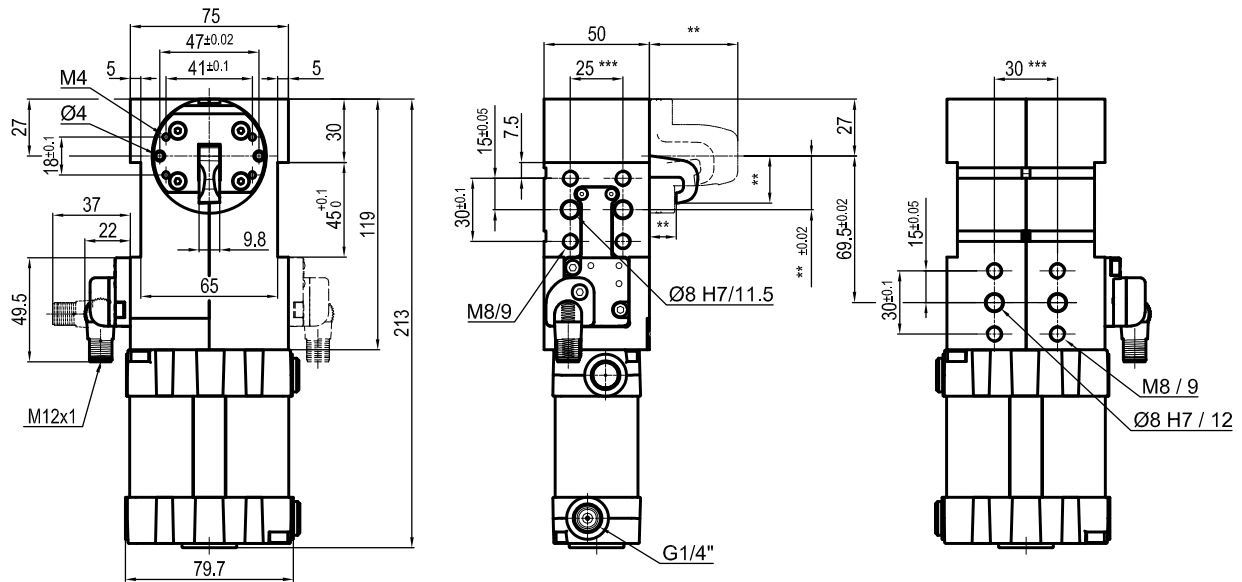
Numerazione progressiva per prodotto speciale a cura dell'Ufficio Commerciale Dept.

K = Sensore elettronico PNP (ottico) (DF-K)
N = Senza sensore (con piastra di chiusura)

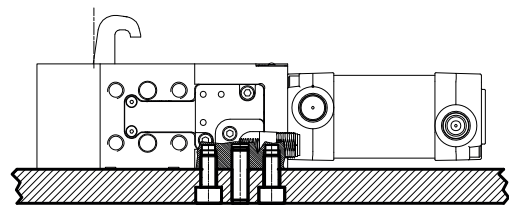
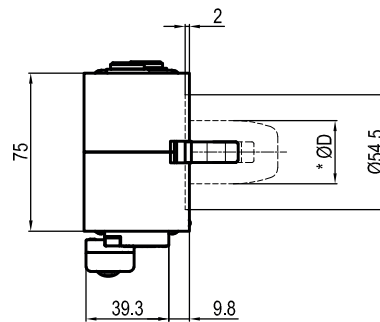
10 Revisione prodotto

Assegnato da UNIVER

USP50U_0___K



*	ØD
1	<=19
2	20
3	25
4	30
5	35



Bore Ø	Clamping force	Weight (reference plate, pin and hook not included)
50 mm	4000 N	1,8 Kg

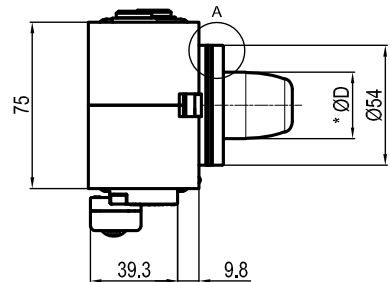
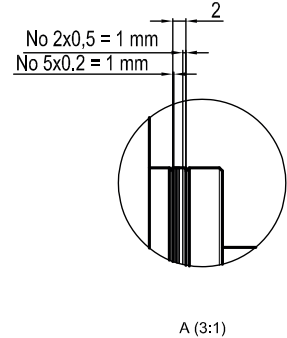
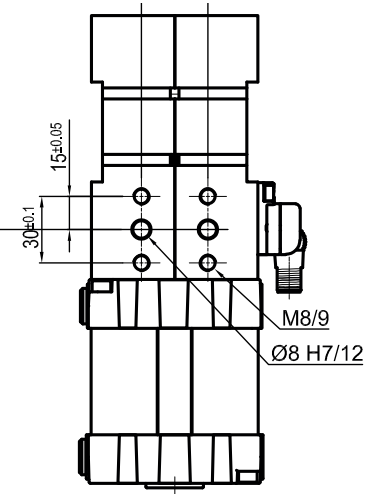
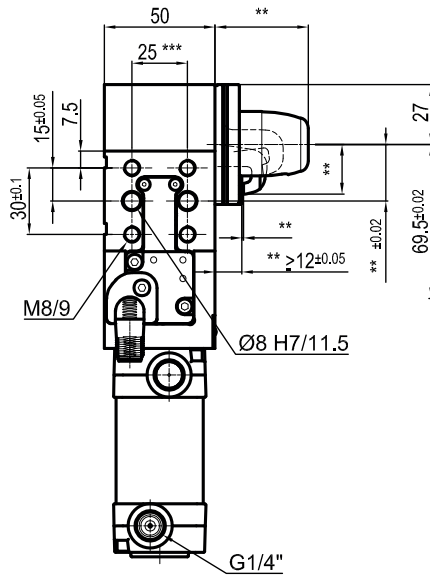
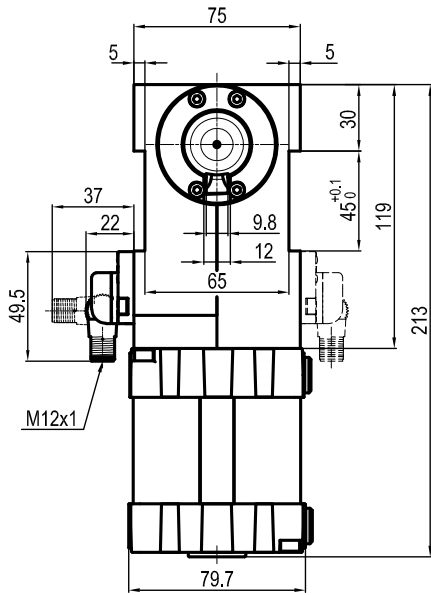
Min./Max. operating pressure: **0,4 / 0,6 MPa**
 Operating temperature: **5° ÷ 45° C**
 Electronic sensor with M12 swivel connector, from 0° to 90°, in steps of 10°
 Supply voltage: 10 ÷ 30 Vdc
 IP code: **IP 65**

** : MISSING DIMENSION TO BE DEFINED ACCORDING TO CUSTOMER SPECIFICATIONS
 *** : TOLERANCE BETWEEN DOWEL HOLES ± 0,02, BETWEEN SCREW HOLES ± 0,1
 THE SENSOR CAN BE MOUNTED ON EITHER RIGHT OR LEFT SIDE

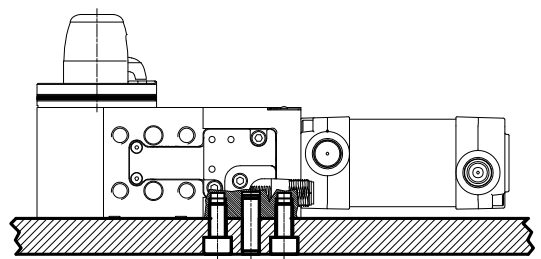
X= metal sheet
 Y= clamping range (X+0,5 mm Max)

Subject to technical modifications without notice

USP50U_1_ _ _ _ K_



*	∅D
1	<=19
2	20
3	25
4	30
5	35



Bore ∅	Clamping force	Weight (reference plate, pin and hook not included)
50 mm	4000 N	1,8 Kg

Min./Max. operating pressure: **0,4 / 0,6 MPa**
 Operating temperature: **5° ÷ 45° C**
 Electronic sensor with M12 swivel connector,
 from 0° to 90°, in steps of 10°
 Supply voltage: 10 ÷ 30 Vdc
 IP code: **IP 65**

** : MISSING DIMENSION TO BE DEFINED ACCORDING TO CUSTOMER SPECIFICATIONS
 *** : TOLERANCE BETWEEN DOWEL HOLES ± 0,02, BETWEEN SCREW HOLES ± 0,1
 THE SENSOR CAN BE MOUNTED ON EITHER RIGHT OR LEFT SIDE

X= metal sheet
 Y= clamping range (X+0,5 mm Max)

Subject to technical modifications without notice