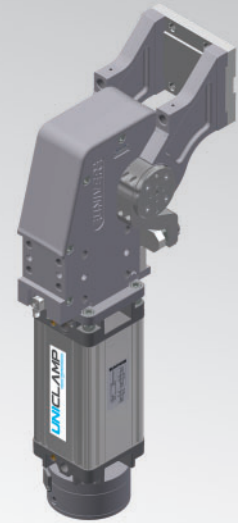


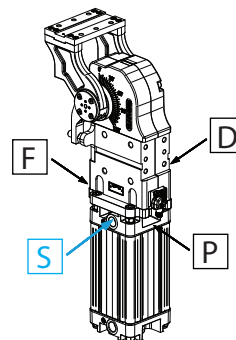
UAGP

UNICLAMP Pneumatic power pivot



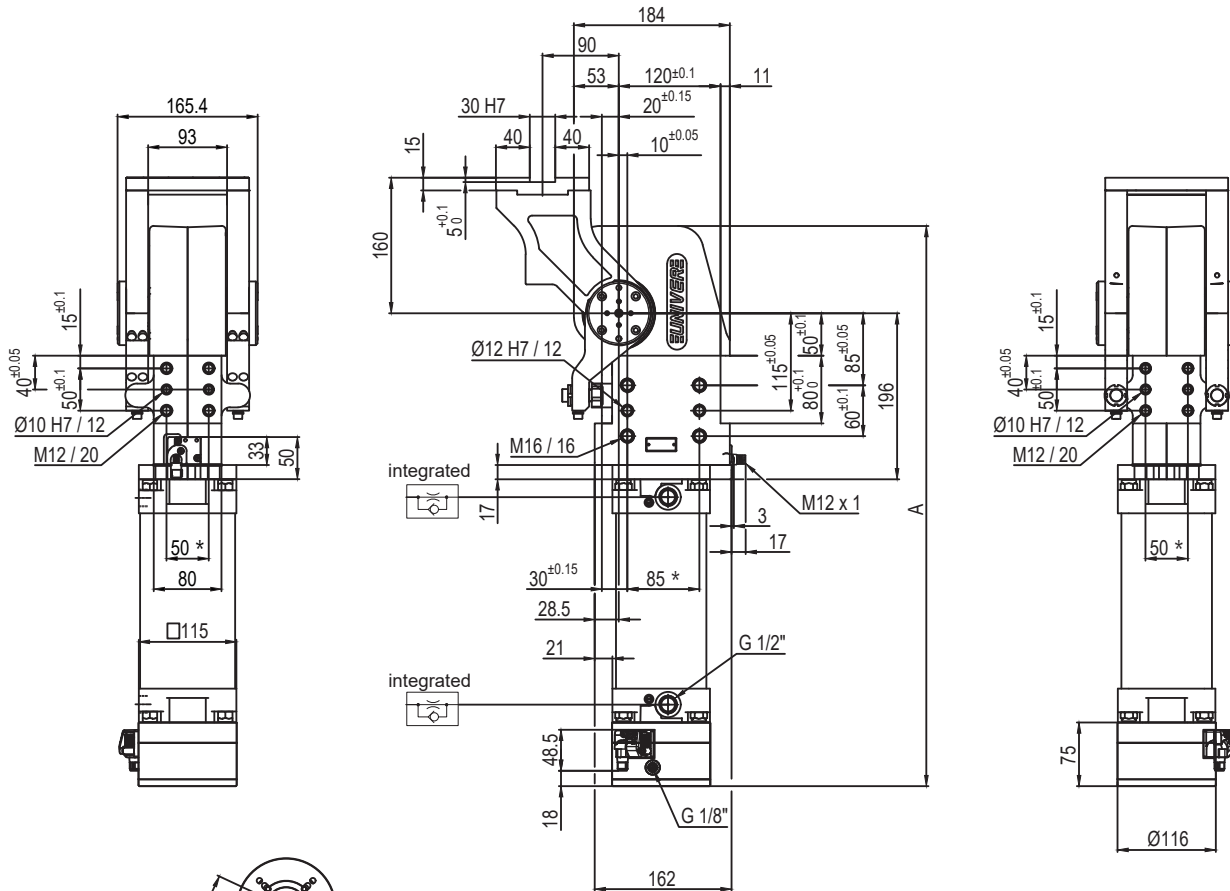
| | | | | | | | | | | | | | | |
|---|---|---|---|---|---|---|---|---|---|---|---|---|---|---|
| U | A | G | P | 0 | 8 | 0 | O | A | 0 | 9 | 0 | B | S | 0 |
| 1 | | 2 | 3 | | | 4 | 5 | 6 | | | 7 | 8 | 9 | |

| 1 Series | 2 Version | 3 Size |
|---|--|--|
| UAG = UNICLAMP Power pivot with fixed opening angle | P = Pneumatic | 075 = 75Nm Ø80 mm 215 = 210Nm Ø125 mm 080 = 60Nm Ø80 mm 300 = 300Nm Ø160 mm 120 = 110Nm Ø100 mm 350 = 350Nm Ø160 mm 150 = 120Nm Ø100 mm 355 = 350Nm Ø160 mm 155 = 120Nm Ø100 mm 600 = 600Nm Ø200 mm 170 = 170Nm Ø125 mm 605 = 600Nm Ø200 mm 210 = 210Nm Ø125 mm |
| 4 Table position | 5 Sensor | 6 Pivot rotation angles |
| V = Vertical 180° O = Horizontal 90° Z = Vertical, mirror of V position P = Horizontal, mirror of O position (Max opening angle 60°) | K = Electronic sensor PNP (optical) (DF-K) A = PNP Electronic Sensor (optic) for opening angle (DF-K) + brake sensor (DF-U) | 120 = 120° 090 = 90° 060 = 60° 045 = 45° |
| 7 Brake system | 8 Connections | 9 Product revision |
| B = With brake W = Without brake M = With brake and manual unlock | S = Left side D = Right side F = Front side P = Rear side | Assigned by UNIVER |

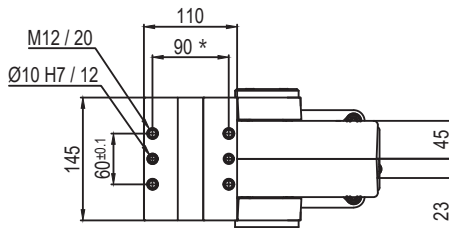


UNIVER S.p.A recommends that all power pivot applications are validated by UNIVER technical department

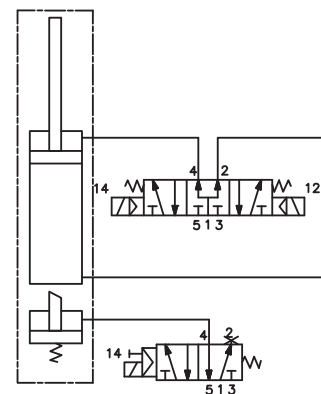
UAGP155OA__BS0



| Pivot rotation in degrees | A |
|---------------------------|-------|
| 45° | 583.5 |
| 60° | 597 |
| 90° | 628 |
| 120° | 662.5 |



Passive brake



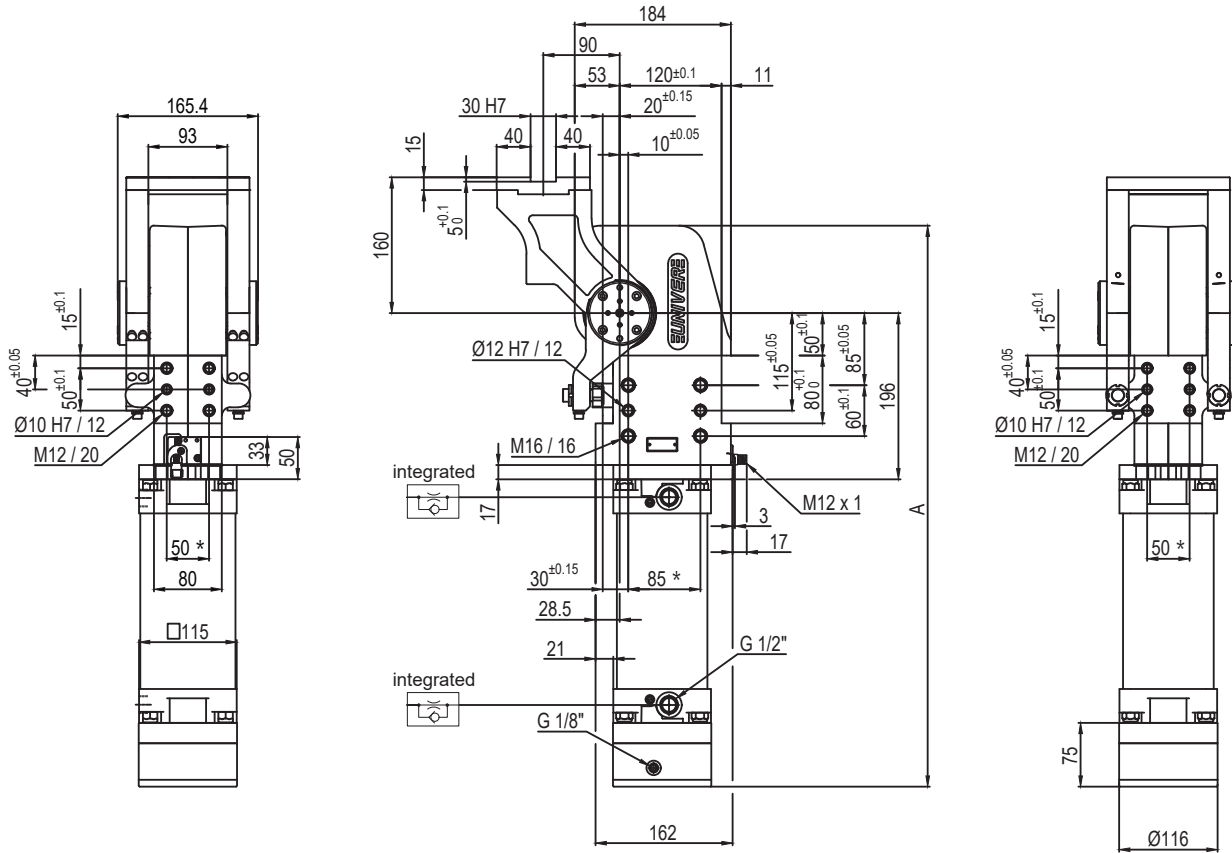
| Size | Holding moment | Max. torque at the rotary table 0,55 MPa | Weight |
|------|----------------|--|--------|
| 155 | 6000 Nm | 120 Nm | 25 Kg |

Min./Max. operating pressure: **0,4 / 0,6 MPa**
 Operating temperature: **5° ÷ 45° C**
 Predetermine pivot rotation in degrees: **45°- 60°- 90°- 120°**
 Rotary table position: **Horizontal 90°**
 Electronic sensor with M12 swivel connector, from 0° or 90°, in steps of 10°
 Supply voltage: 10 ÷ 30 Vdc
 IP code: **IP 65**

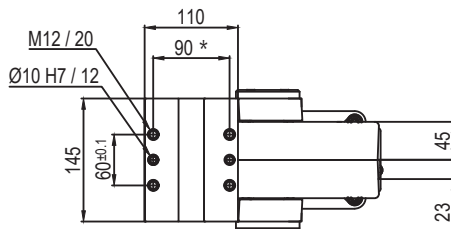
*: TOLERANCE BETWEEN DOWEL HOLES ± 0.02, BETWEEN SCREW HOLES ± 0.1

Subject to technical modifications without notice

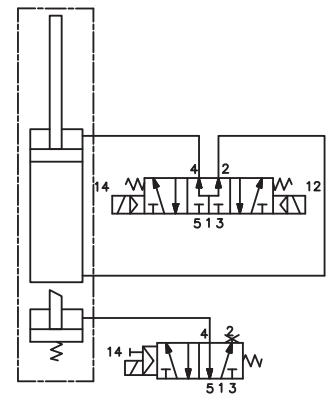
UAGP155OK__BS0



| Pivot rotation in degrees | A |
|---------------------------|-------|
| 45° | 583.5 |
| 60° | 597 |
| 90° | 628 |
| 120° | 662.5 |



Passive brake



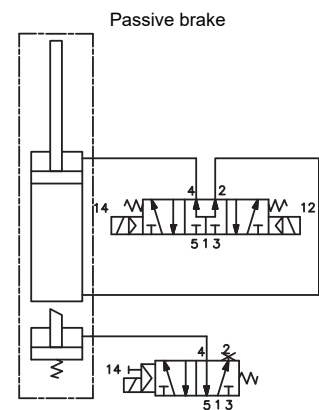
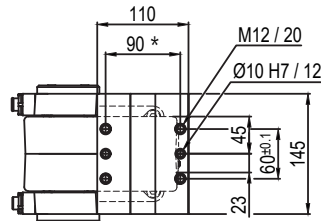
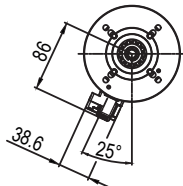
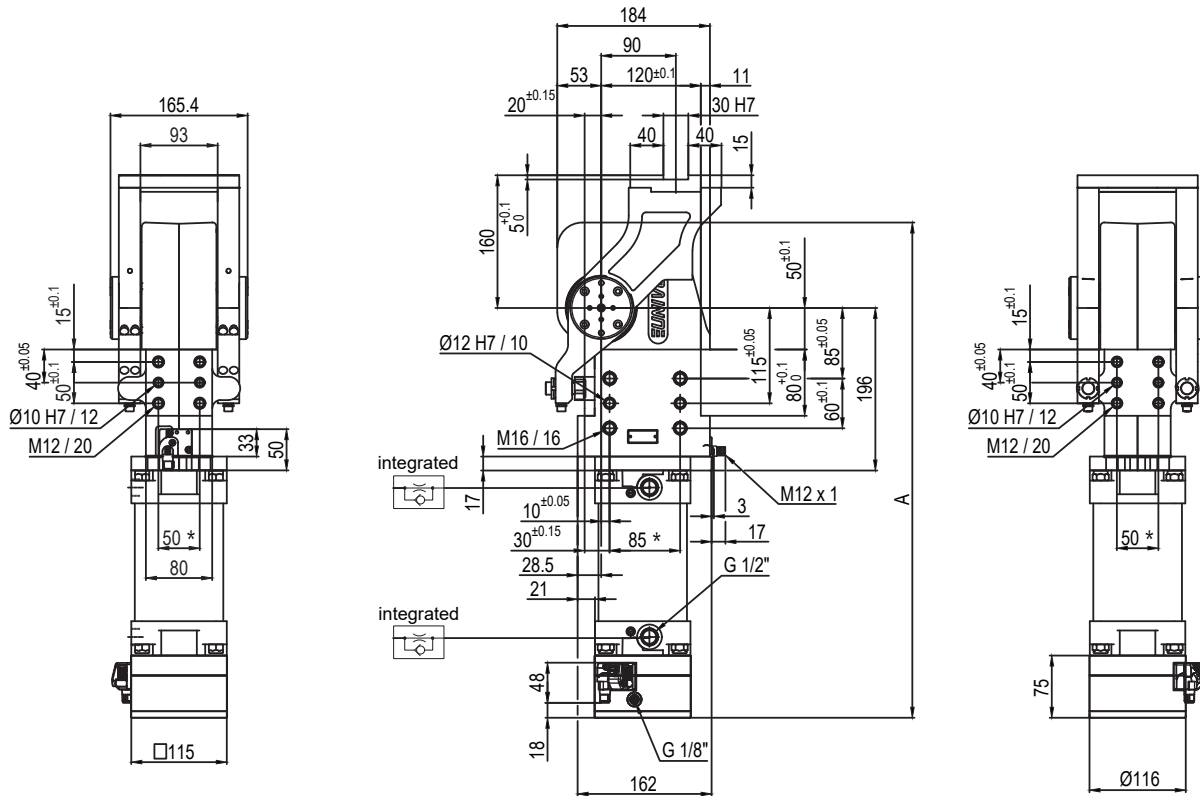
| Size | Holding moment | Max. torque at the rotary table 0,55 MPa | Weight |
|------|----------------|--|--------|
| 155 | 6000 Nm | 120 Nm | 25 Kg |

Min./Max. operating pressure: **0,4 / 0,6 MPa**
 Operating temperature: **5° ÷ 45° C**
 Predetermine pivot rotation in degrees: **45°- 60°- 90°- 120°**
 Rotary table position: **Horizontal 90°**
 Electronic sensor with M12 swivel connector, from 0° or 90°, in steps of 10°
 Supply voltage: 10 ÷ 30 Vdc
 IP code: **IP 65**

*: TOLERANCE BETWEEN DOWEL HOLES ± 0,02, BETWEEN SCREW HOLES ± 0,1

Subject to technical modifications without notice

UAGP155PA__BS0



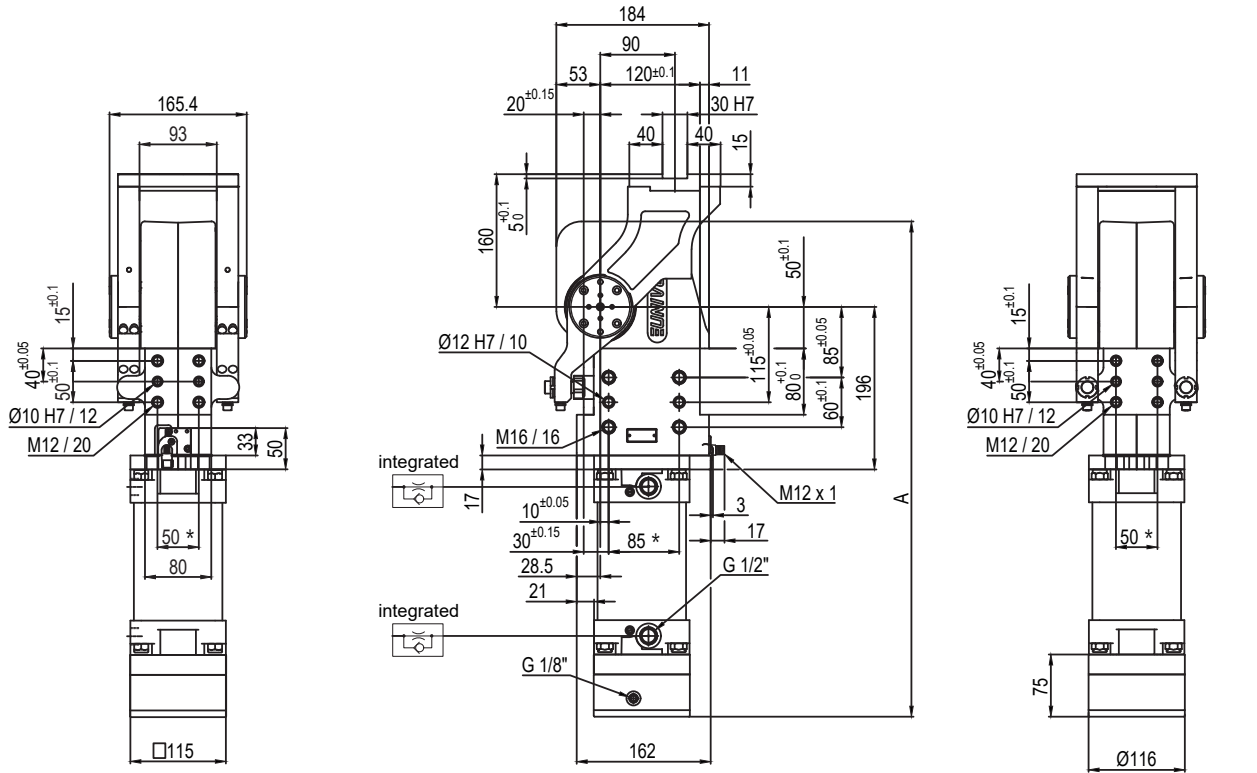
| Pivot rotation in degrees | A |
|---------------------------|-------|
| 45° | 583.5 |
| 60° | 597 |

| Size | Holding moment | Max. torque at the rotary table 0,55 MPa | Weight |
|------|----------------|--|--------|
| 155 | 6000 Nm | 120 Nm | 25 Kg |

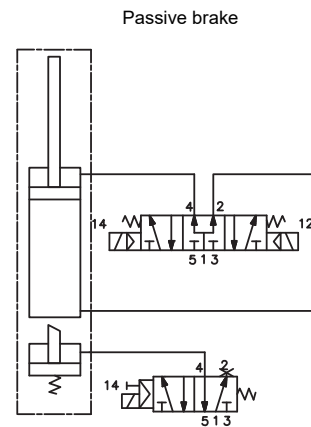
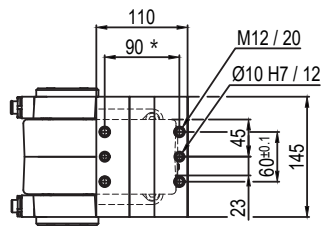
*: TOLERANCE BETWEEN DOWEL HOLES ± 0.02, BETWEEN SCREW HOLES ± 0.1

Min./Max. operating pressure: **0,4 / 0,6 MPa**
 Operating temperature: **5° ÷ 45° C**
 Predetermine pivot rotation in degrees: **45°- 60°**
 Rotary table position: **Horizontal mirror of O**
 Electronic sensor with M12 swivel connector, from 0° or 90°, in steps of 10°
 Supply voltage: 10 ÷ 30 Vdc
 IP code: **IP 65**

Subject to technical modifications without notice

UAGP155PK__BS0


| Pivot rotation in degrees | A |
|---------------------------|-------|
| 45° | 583.5 |
| 60° | 597 |



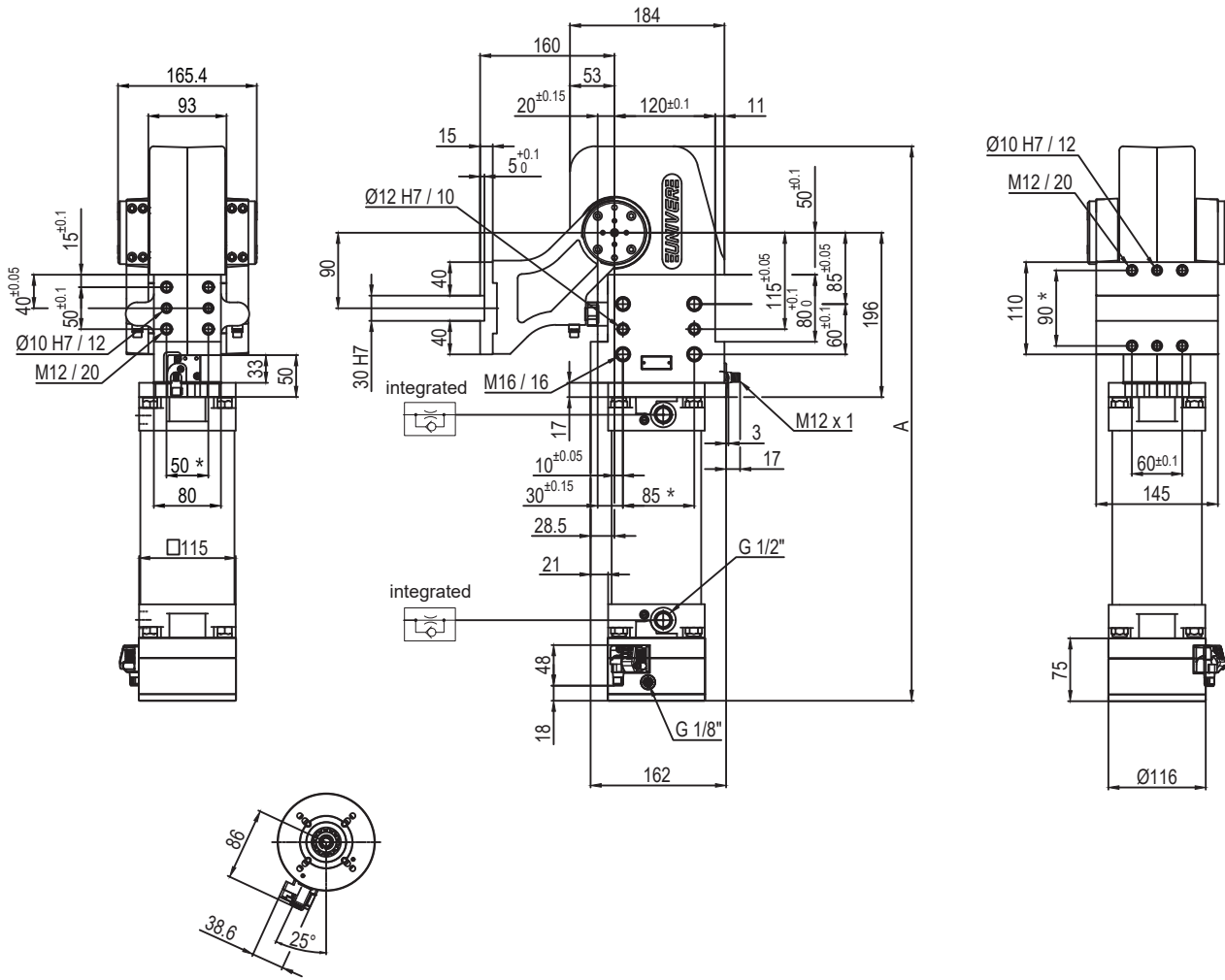
| Size | Holding moment | Max. torque at the rotary table 0,55 MPa | Weight |
|------|----------------|--|--------|
| 155 | 6000 Nm | 120 Nm | 25 Kg |

Min./Max. operating pressure: **0,4 / 0,6 MPa**
 Operating temperature: **5° ÷ 45° C**
 Predetermine pivot rotation in degrees: **45°- 60°**
 Rotary table position: **Horizontal mirror of O**
 Electronic sensor with M12 swivel connector, from 0° or 90°, in steps of 10°
 Supply voltage: 10 ÷ 30 Vdc
 IP code: **IP 65**

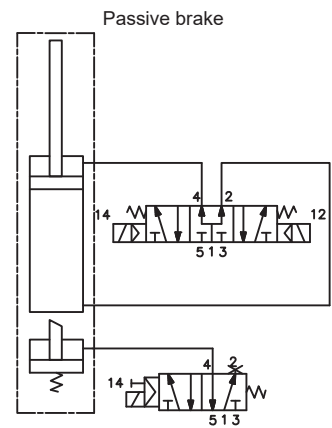
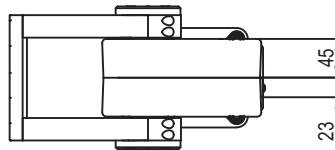
*: TOLERANCE BETWEEN DOWEL HOLES ± 0.02, BETWEEN SCREW HOLES ± 0.1

Subject to technical modifications without notice

UAGP155VA__BS0



| Pivot rotation in degrees | A |
|---------------------------|-------|
| 45° | 583.5 |
| 60° | 597 |
| 90° | 628 |
| 120° | 662.5 |



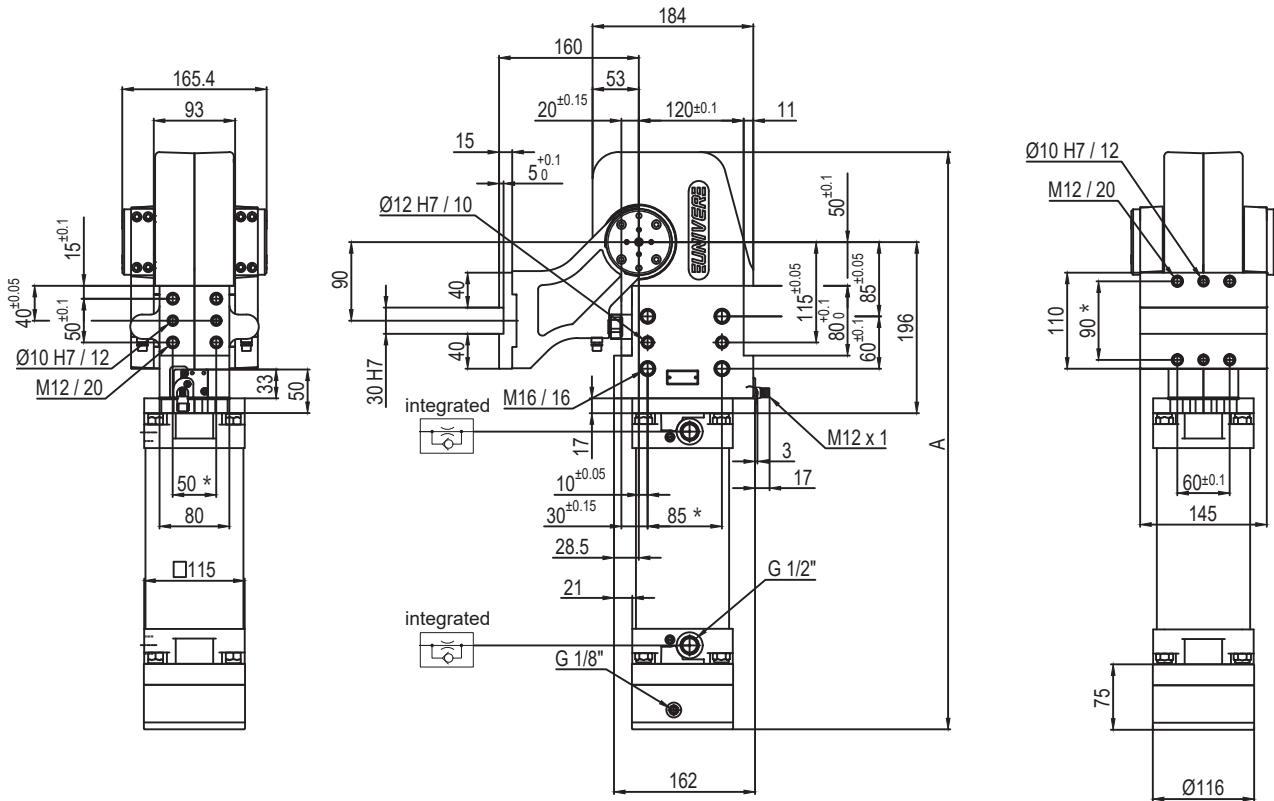
| Size | Holding moment | Max. torque at the rotary table 0,55 MPa | Weight |
|------|----------------|--|--------|
| 155 | 6000 Nm | 120 Nm | 25 Kg |

Min./Max. operating pressure: **0,4 / 0,6 MPa**
 Operating temperature: **5° ÷ 45° C**
 Predetermine pivot rotation in degrees: **45° - 60° - 90° - 120°**
 Rotary table position: **Vertical 180°**
 Electronic sensor with M12 swivel connector, from 0° or 90°, in steps of 10°
 Supply voltage: 10 ÷ 30 Vdc
 IP code: **IP 65**

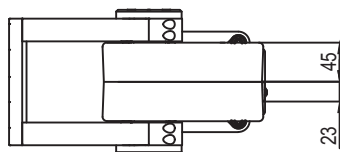
*: TOLERANCE BETWEEN DOWEL HOLES ± 0,02, BETWEEN SCREW HOLES ± 0,1

Subject to technical modifications without notice

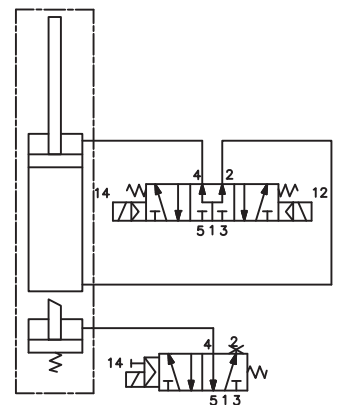
UAGP155VK__BS0



| Pivot rotation in degrees | A |
|---------------------------|-------|
| 45° | 583.5 |
| 60° | 597 |
| 90° | 628 |
| 120° | 662.5 |



Passive brake

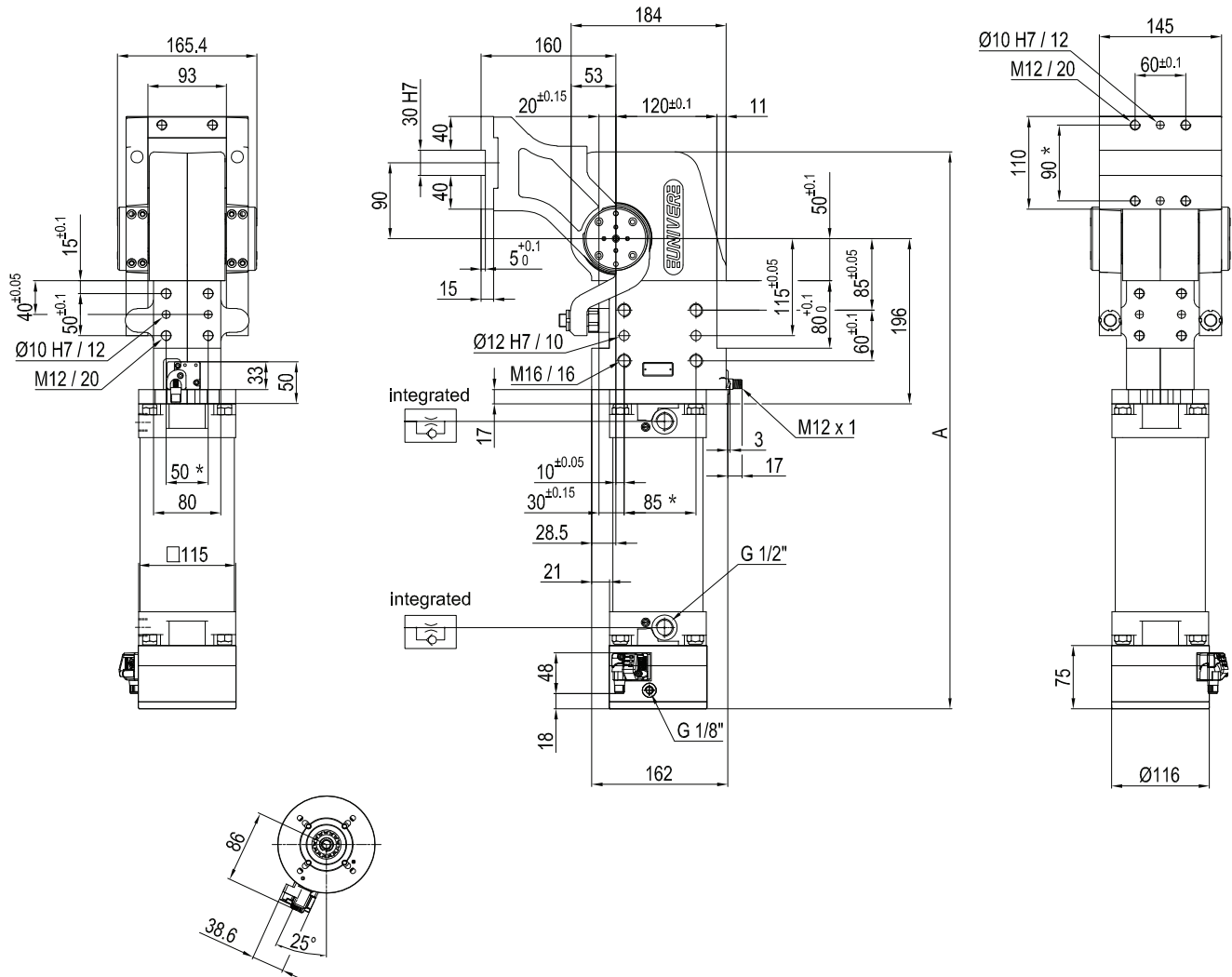


| Size | Holding moment | Max. torque at the rotary table 0,55 MPa | Weight |
|------|----------------|--|--------|
| 155 | 6000 Nm | 120 Nm | 25 Kg |

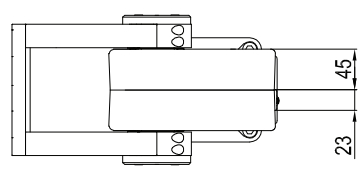
Min./Max. operating pressure: **0,4 / 0,6 MPa**
 Operating temperature: **5° ÷ 45° C**
 Predetermine pivot rotation in degrees: **45° - 60° - 90° - 120°**
 Rotary table position: **Vertical 180°**
 Electronic sensor with M12 swivel connector, from 0° or 90°, in steps of 10°
 Supply voltage: 10 ÷ 30 Vdc
 IP code: **IP 65**

*: TOLERANCE BETWEEN DOWEL HOLES ± 0.02, BETWEEN SCREW HOLES ± 0.1

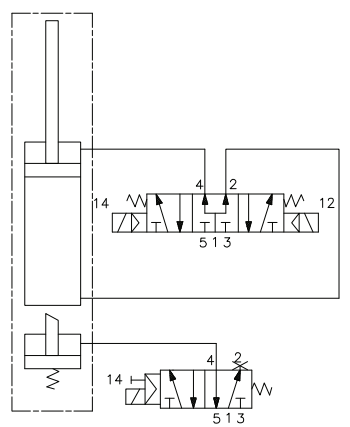
UAGP155ZA__BS0



| Pivot rotation in degrees | A |
|---------------------------|-------|
| 45° | 583.5 |
| 60° | 597 |
| 90° | 628 |
| 120° | 662.5 |



Passive brake



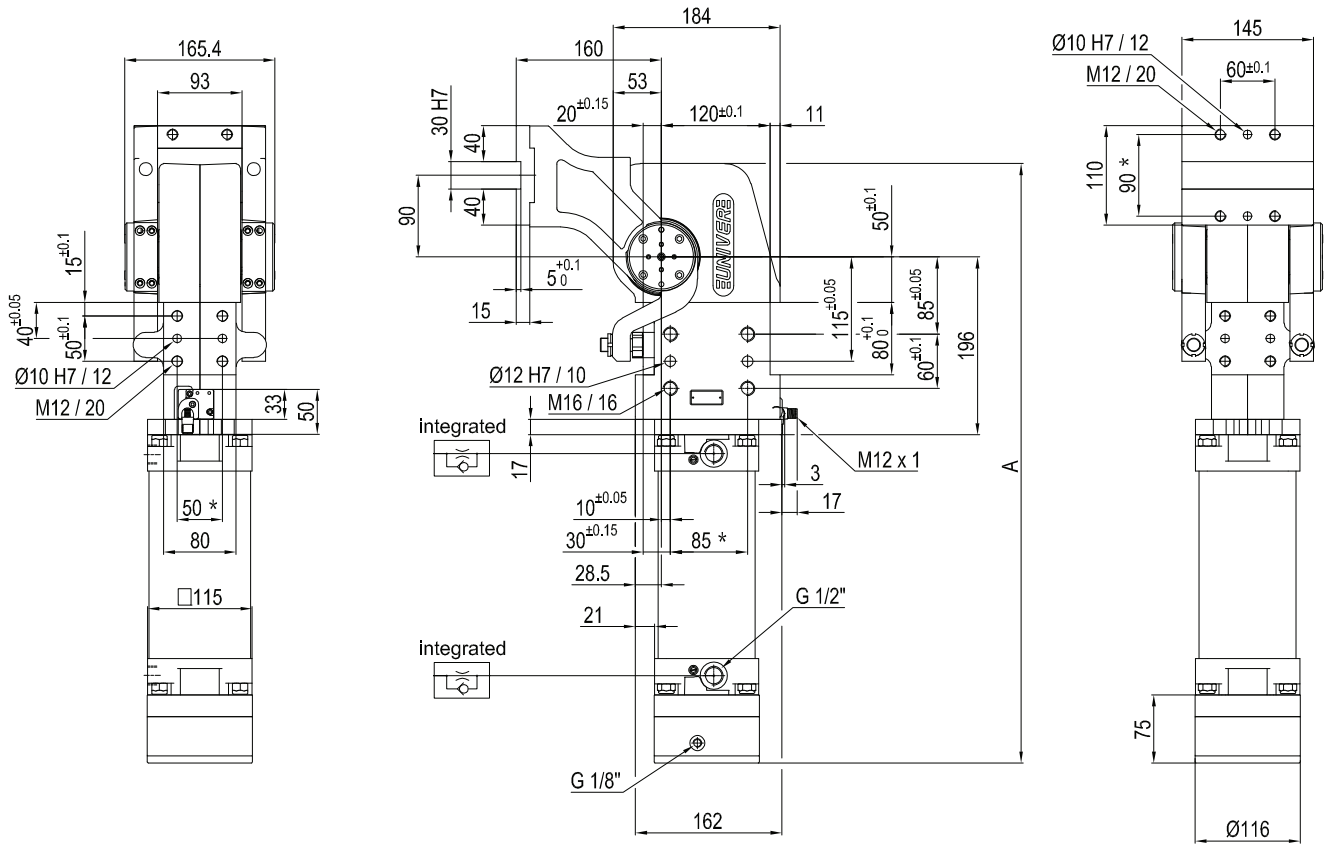
| Size | Holding moment | Max. torque at the rotary table 0,55 MPa | Weight |
|------|----------------|--|--------|
| 155 | 6000 Nm | 120 Nm | 25 Kg |

Min./Max. operating pressure: **0,4 / 0,6 MPa**
 Operating temperature: **5° ÷ 45° C**
 Predetermine pivot rotation in degrees: **45°- 60° - 90°- 120°**
 Rotary table position: **Vertical mirror of V**
 Electronic sensor with M12 swivel connector, from 0° or 90°, in steps of 10°
 Supply voltage: 10 ÷ 30 Vdc
 IP code: **IP 65**

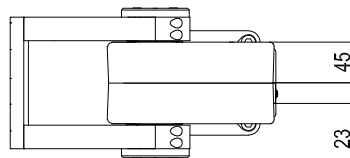
*: TOLERANCE BETWEEN DOWEL HOLES ± 0,02, BETWEEN SCREW HOLES ± 0,1

Subject to technical modifications without notice

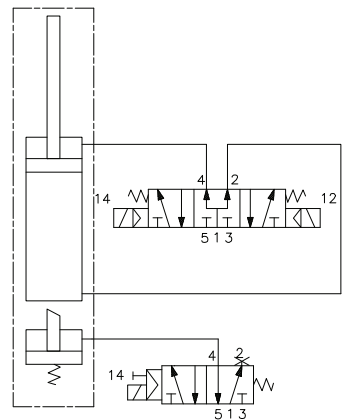
UAGP155ZK__BS0



| Pivot rotation in degrees | A |
|---------------------------|-------|
| 45° | 583.5 |
| 60° | 597 |
| 90° | 628 |
| 120° | 662.5 |



Passive brake



| Size | Holding moment | Max. torque at the rotary table 0,55 MPa | Weight |
|------|----------------|--|--------|
| 155 | 6000 Nm | 120 Nm | 25 Kg |

Min./Max. operating pressure: **0,4 / 0,6 MPa**
 Operating temperature: **5° ÷ 45° C**
 Predetermine pivot rotation in degrees: **45° - 60° - 90° - 120°**
 Rotary table position: **Vertical mirror of V**
 Electronic sensor with M12 swivel connector, from 0° or 90°, in steps of 10°
 Supply voltage: 10 ÷ 30 Vdc
 IP code: **IP 65**

*: TOLERANCE BETWEEN DOWEL HOLES ± 0,02, BETWEEN SCREW HOLES ± 0,1

Subject to technical modifications without notice